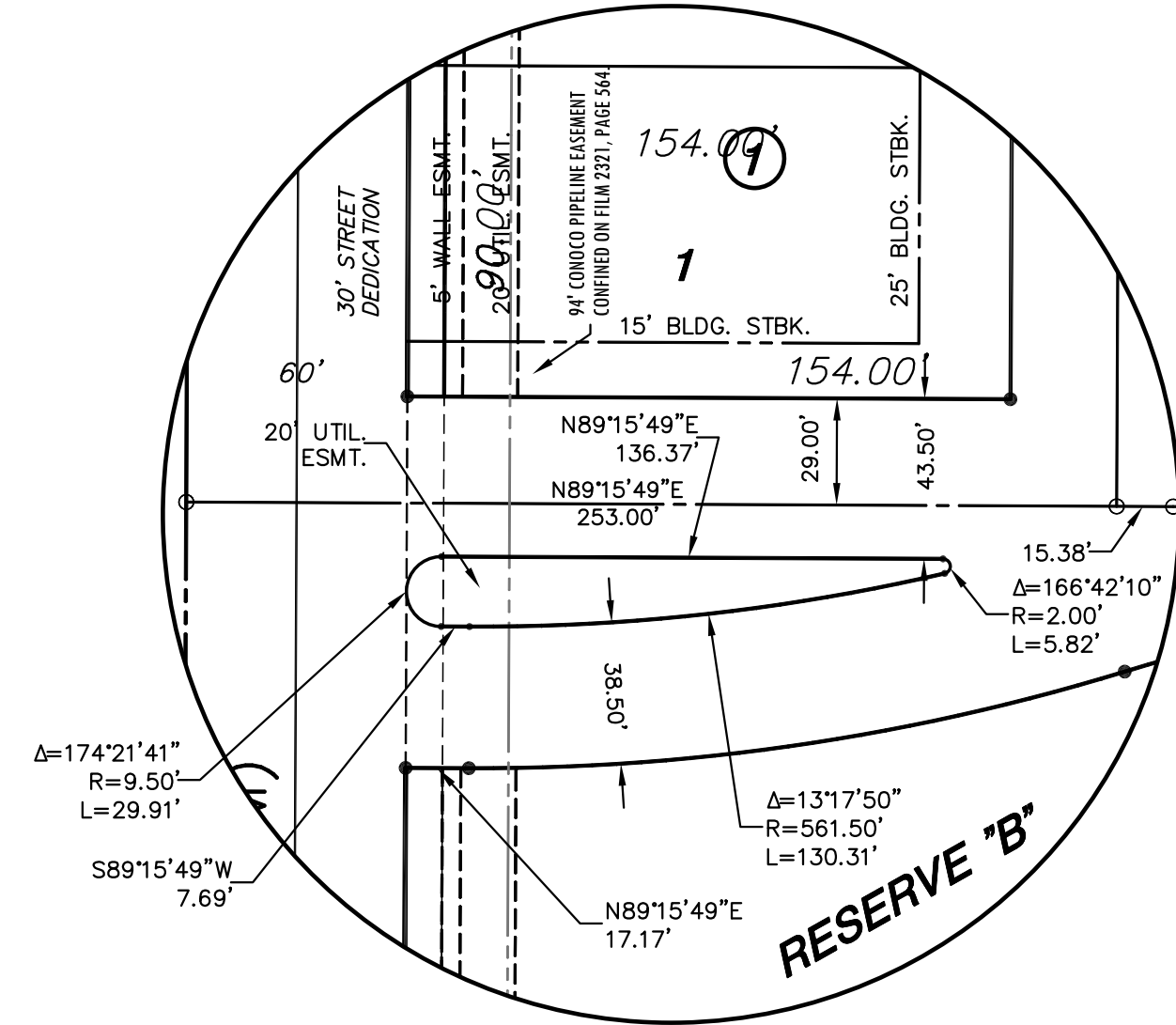


MINIMUM PAD ELEVATIONS (LOWEST OPENINGS)			
LOTS	BLOCK	ELEVATION	
		(CITY DATUM)	(NGVD)
1	3	148.6	1336.0
2	3	148.6	1336.0
3	3	148.6	1336.0
4	3	148.6	1336.0
5	3	148.6	1336.0
6	3	148.6	1336.0
7	3	148.6	1336.0
8	3	148.6	1336.0
9	3	148.6	1336.0
10	3	148.6	1336.0
11	3	148.6	1336.0
12	3	148.6	1336.0
13	3	148.6	1336.0
14	3	148.6	1336.0
15	3	148.6	1336.0
16	3	148.6	1336.0
17	3	148.6	1336.0
18	3	148.6	1336.0
19	3	148.6	1336.0
20	3	148.6	1336.0
21	3	148.6	1336.0
22	3	148.6	1336.0
23	3	148.6	1336.0
24	3	148.6	1336.0
25	3	148.6	1336.0
1	4	138.8	1326.2
2	4	138.8	1326.2
3	4	138.8	1326.2
4	4	138.8	1326.2
5	4	138.8	1326.2
6	4	138.8	1326.2
7	4	138.8	1326.2
8	4	138.8	1326.2
9	4	138.8	1326.2
10	4	138.8	1326.2
11	4	138.8	1326.2
12	4	138.8	1326.2
13	4	138.8	1326.2
14	4	138.8	1326.2
15	4	138.8	1326.2
16	4	138.8	1326.2
17	4	138.8	1326.2
18	4	138.8	1326.2
19	4	138.8	1326.2
20	4	138.8	1326.2
21	4	138.8	1326.2
22	4	138.8	1326.2
23	4	138.8	1326.2
24	4	138.8	1326.2
25	4	138.8	1326.2
1	5	137.6	1325.0
2	5	137.6	1325.0



DETAIL RESERVE "A"
1"=50'

FINAL PLAT

COUNTRY HOLLOW ADDITION

AN ADDITION TO WICHITA, SEDGWICK COUNTY, KANSAS

- LEGEND**
- △ = Section Corner Monument Found
 - = Found Survey Monument (see annotated caption for type)
 - = Set 5/8" Rebar w/ MKEC CLS 39 id. Cap
 - (P) = Platted
 - (M) = Measured
 - (CM) = Calculated from measured
 - U.E. & D.E. = Utility Easement and Drainage Easement
 - = 25' Building Setback (unless otherwise annotated)
 - - - = 20' Utility Easement (unless otherwise annotated)
 - = 30' Street Dedication

- BENCH MARKS**
- BM #1 Railroad spike in South face of power pole, 25' +/- East and 70' +/- South of West Quarter Corner of Sec. 26, T 27 S, R 2 E. Elev. = 1337.50 (NGVD)
 - BM #2 Chiseled square on top of curb at East end of median island on Lincoln on West side of 127th Street East. Elev. = 1349.55 (NGVD)

NW. Cor., NW 1/4, Sec. 26
T27S, R2E, 6TH P.M.
Set 5/8" Rebar w/ MKEC CLS 39 id cap

NE. Cor., NW 1/4, Sec. 26
T27S, R2E, 6TH P.M.
Fnd. 3/4" Rebar w/o id cap in thimble

