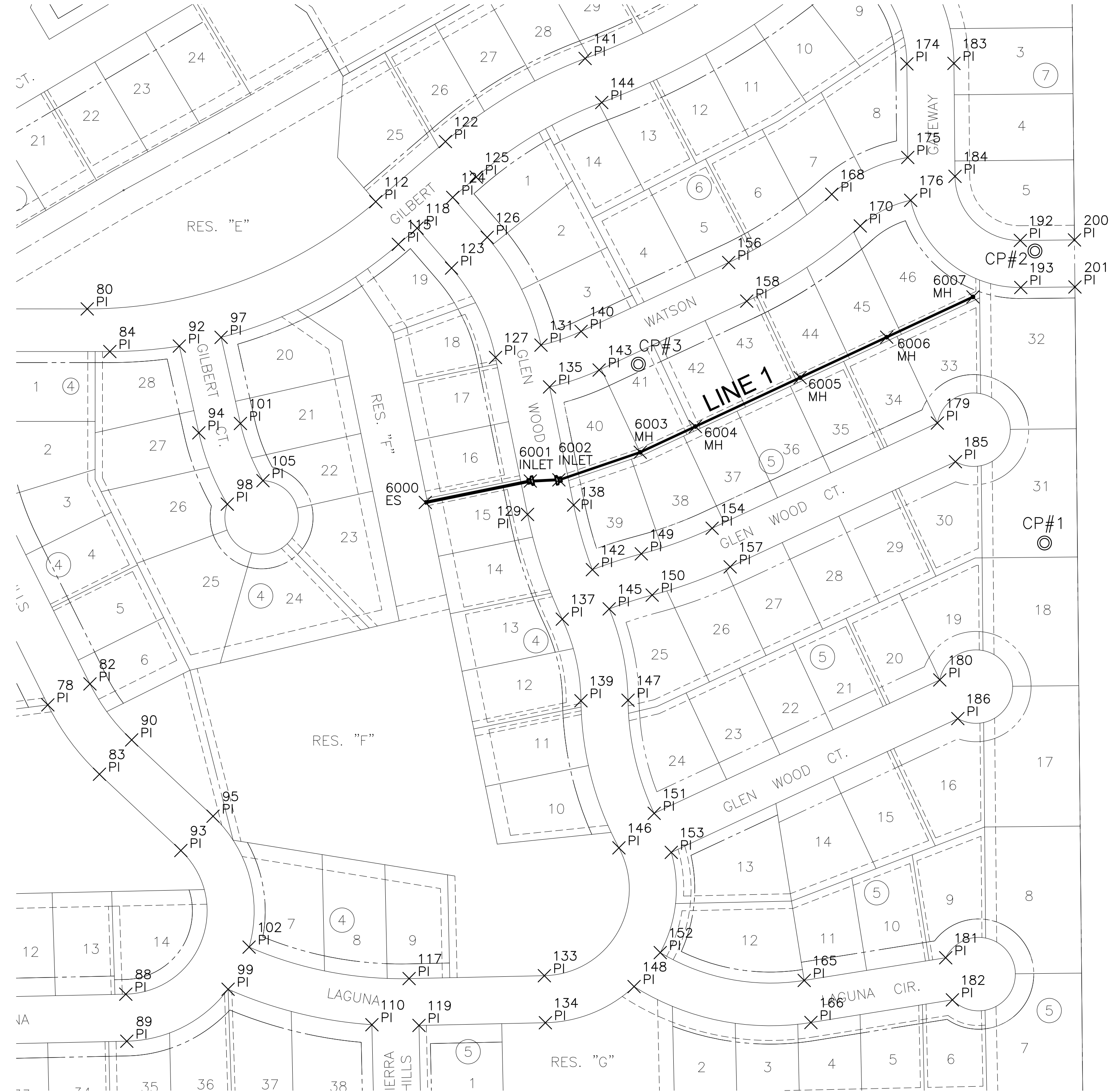


PLOTTED: Wednesday, July 29, 2015 @ 09:15AM



**CONTROL POINTS**

PT. NO.	NORTH	EAST	ELEV.	DESCRIPTION
1	1682116.738	1694393.137	1339.32	5/8" BAR W/ MKEC ALUM ID CAP
2	1682513.937	1694380.129	1338.21	5/8" BAR W/ MKEC ALUM ID CAP
3	1682359.995	1693840.825	1335.40	5/8" BAR W/ MKEC ALUM ID CAP

EVERY ATTEMPT HAS BEEN MADE TO INSURE ALL COORDINATE VALUES SHOWN ARE AN ACCURATE AND TRUE REPRESENTATION OF THE CURRENT PLANS. ALL VALUES ARE TO BE CONFIRMED WITH THE FINAL SIGNED PLAN SET BEFORE USE.

1" = 100'



PLAT POINTS			
Point #	Northing	Easting	Desc.
78	1681896.57	1693037.81	PI
80	1682435.20	1693091.39	PI
82	1681925.07	1693095.11	PI
83	1681802.19	1693108.02	PI
84	1682377.18	1693122.13	PI
88	1681503.01	1693143.83	PI
89	1681439.03	1693145.19	PI
90	1681848.88	1693151.79	PI
92	1682384.64	1693216.66	PI
93	1681698.43	1693218.70	PI
94	1682266.64	1693243.12	PI
95	1681745.12	1693262.47	PI
97	1682396.51	1693273.44	PI
98	1682169.63	1693281.87	PI
99	1681509.70	1693282.95	PI
101	1682279.33	1693299.71	PI
102	1681567.06	1693311.52	PI
105	1682201.58	1693330.35	PI
110	1681461.46	1693478.49	PI
112	1682581.06	1693483.74	PI
115	1682523.04	1693514.48	PI
117	1681524.23	1693529.07	PI
118	1682545.02	1693539.94	PI
119	1681460.51	1693542.52	PI
122	1682662.87	1693578.50	PI
123	1682490.72	1693586.82	PI
124	1682586.85	1693588.38	PI
125	1682614.43	1693620.33	PI
126	1682532.55	1693635.26	PI
127	1682369.13	1693646.57	PI
129	1682155.61	1693690.11	PI
131	1682385.90	1693708.44	PI
133	1681528.16	1693713.03	PI
134	1681464.17	1693714.39	PI
135	1682329.07	1693720.05	PI
137	1682013.15	1693737.35	PI
138	1682168.40	1693752.82	PI
139	1681902.15	1693762.78	PI

STORM WATER SEWER POINTS			
Point #	Northing	Easting	Desc.
6000	1682171.92	1693551.12	ES
6001	1682201.04	1693693.94	INLET
6002	1682202.63	1693732.74	INLET
6003	1682240.19	1693843.38	MH
6004	1682275.20	1693918.34	MH
6005	1682341.71	1694060.73	MH
6006	1682396.73	1694178.52	MH
6007	1682451.54	1694295.86	MH

NOTE:  
INLET POINTS TO CENTER OF INSIDE FACE.

PLAT POINTS			
Point #	Northing	Easting	Desc.
140	1682404.61	1693762.97	PI
141	1682775.82	1693768.41	PI
142	1682080.46	1693778.29	PI
143	1682352.06	1693787.52	PI
144	1682715.94	1693791.01	PI
145	1682027.11	1693801.16	PI
146	1681702.08	1693814.40	PI
147	1681902.86	1693826.77	PI
148	1681513.36	1693834.99	PI
149	1682102.00	1693844.83	PI
150	1682045.91	1693859.60	PI
151	1681749.05	1693862.33	PI
152	1681559.56	1693870.60	PI
153	1681695.90	1693885.57	PI
154	1682136.84	1693941.12	PI
156	1682498.34	1693963.63	PI
157	1682084.29	1693965.67	PI
158	1682445.79	1693988.18	PI
165	1681521.74	1694066.32	PI
166	1681464.47	1694075.49	PI
168	1682591.14	1694103.82	PI
170	1682548.01	1694142.61	PI
174	1682768.56	1694205.97	PI
175	1682641.23	1694207.16	PI
176	1682582.94	1694211.11	PI
179	1682279.92	1694247.44	PI
180	1681930.46	1694250.70	PI
181	1681552.54	1694258.72	PI
182	1681495.27	1694267.89	PI
183	1682769.15	1694269.97	PI
184	1682615.51	1694271.40	PI
185	1682227.37	1694271.99	PI
186	1681877.91	1694275.25	PI
192	1682528.33	1694360.22	PI
193	1682464.34	1694360.81	PI
200	1682529.02	1694433.85	PI
201	1682465.02	1694434.47	PI



STORM WATER DRAIN PLAN FOR  
**COUNTRY HOLLOW ADDITION**  
PHASE 3A

©2015 MKEC Engineering All Rights Reserved www.mkec.com  
These drawings and their contents, including, but not limited to, all concepts, designs, & ideas are the exclusive property of MKEC Engineering (MKEC), and may not be used or reproduced in any way without the express consent of MKEC.

BUBBLE	
PROJECT NO.	468-85040
DATE	JULY 2015
SCALE	1"=100'
DESIGNED	DRAWN
DFL	JWC
CHECKED	GJA
NO.	REVISION
	DATE
SHEET NO.	
07 OF 14	

J:\CIVIL\442904429 CAD\SHOTS\05 CIVIL\SWSPH3\_0429\_BUBBLE.DWG