

BENCHMARKS:

BM #1: COW Disc in top of curb adjacent to the fire hydrant at the SW corner of Yosemite and Lamp Cir.
Elev. = 146.73 (City Datum)

BM #2: COW Disc in top of curb adjacent to the fire hydrant on the west side of Westgate along the southwesterly line of Lot 13, Block B, Southern Ridge Addition.
Elev. = 144.10 (City Datum)

SCHULTE, LAWRENCE A. & LAVINA M.
P.O. BOX 4
311 PIERCE
MAPLE HILL, KS 66507-0004

UNPLATTED

Sta 0+03.00, 4' Lt. & Rt. Install Type 1 Barricade w/ E.O.R. Marker as Shown (See Detail, Sheet 4.)

Install 65 L.F. Silt Fence Sediment Barrier. See Detail, Sheet 19.

Sta 0+05.00, Begin Construction of 5" A.C. Pvmnt. W/5" Reinf. Rock Base and 4' Sidewalk.

Remove Existing Trees in Road R/W only as Necessary for Pavement and Sidewalk Construction. Cost of Tree Removal to be Included in Lump Sum Bid Item "Site Clearing." See General Note 4.

Construct std. type A wheel chair ramp with detectable warning (both sides) (See detail, sheet 6)

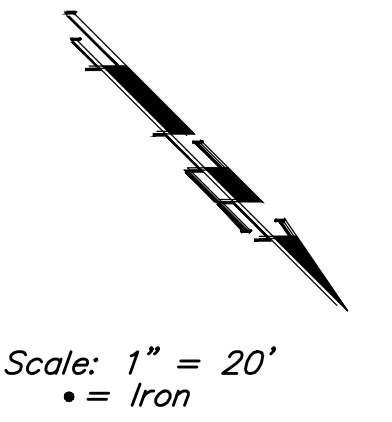
Sta 1+22.00, 36' Rt. Install std. D3 (SNS) ass'y as per City specs. "Lark" & "Greenfield".

Remove Existing EOR Markers. Cost to be Included in "Site Clearing". Saw Cut. Remove and Replace Existing Surface Course as Indicated. Cost Shall be Incidental to Pavement Cost.

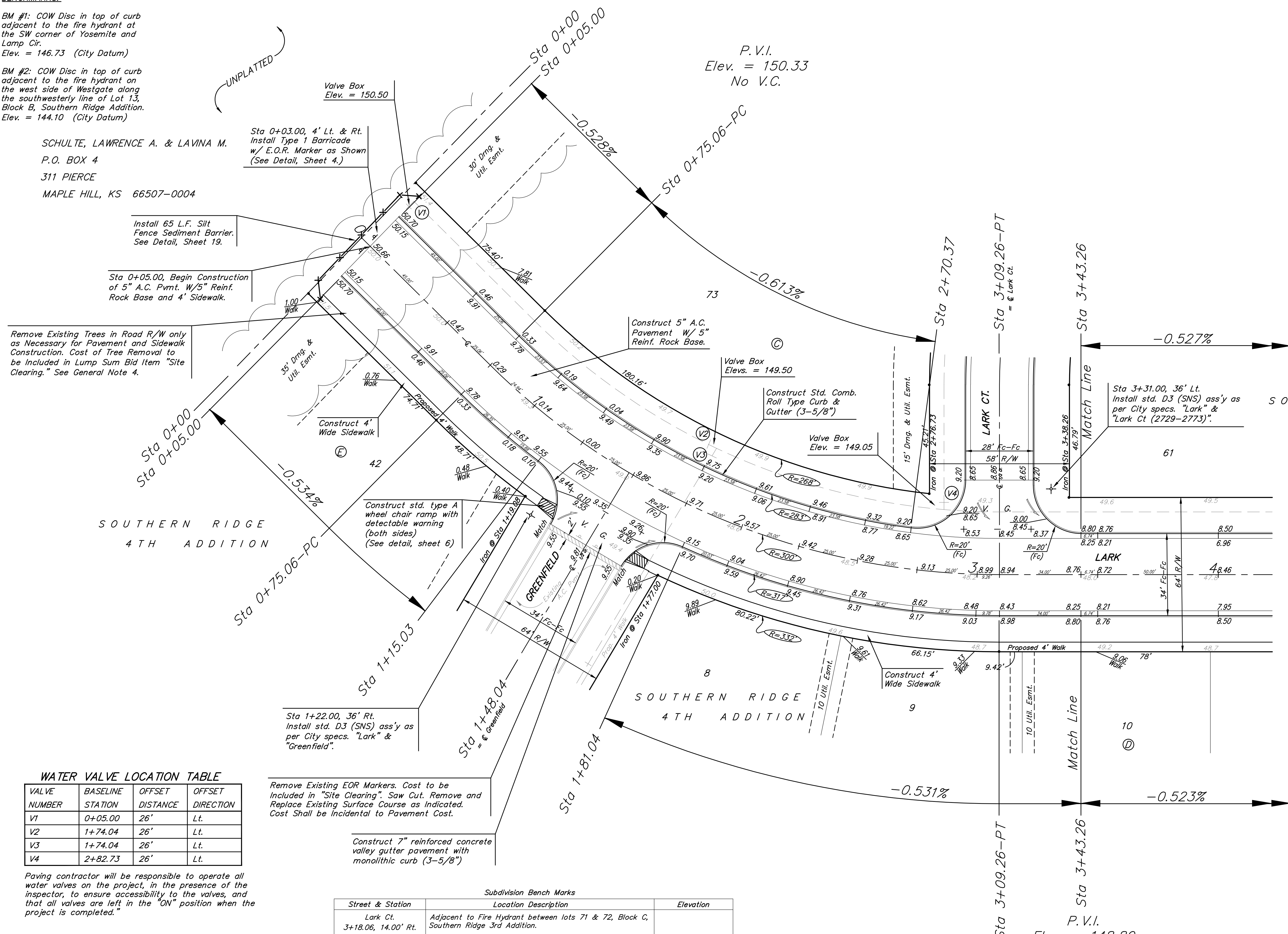
Construct 7" reinforced concrete valley gutter pavement with monolithic curb (3-5/8")

P. V.I.
Elev. = 150.33
No V.C.

P. V.I.
Elev. = 148.80
No V.C.



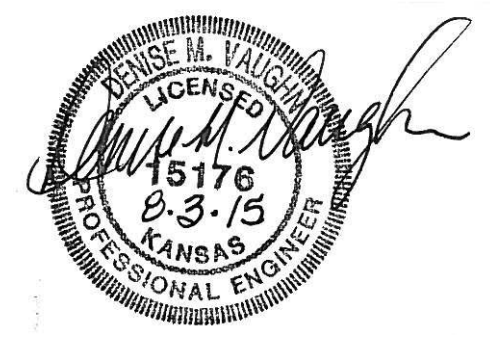
Scale: 1" = 20'
• = Iron



SOUTHERN RIDGE
3RD ADDITION

SOUTHERN RIDGE
4TH ADDITION

SOUTHERN RIDGE
4TH ADDITION



Note: Roll Type Curb & Gutter To Be Constructed On The Pavement Shown On This Sheet. Top of Curb Elevations Are Given For Full Height Curb.

WATER VALVE LOCATION TABLE

VALVE NUMBER	BASELINE STATION	OFFSET DISTANCE	OFFSET DIRECTION
V1	0+05.00	26'	Lt.
V2	1+74.04	26'	Lt.
V3	1+74.04	26'	Lt.
V4	2+82.73	26'	Lt.

Paving contractor will be responsible to operate all water valves on the project, in the presence of the inspector, to ensure accessibility to the valves, and that all valves are left in the "ON" position when the project is completed.

Subdivision Bench Marks

Street & Station	Location Description	Elevation
Lark Ct. 3+18.06, 14.00' Rt.	Adjacent to Fire Hydrant between lots 71 & 72, Block C, Southern Ridge 3rd Addition.	

	SOUTHERN RIDGE 3RD & 4TH ADD - PH. III	
	LARK STA 0+05.00 TO STA 3+43.26	
Baughman Company, P.A. 315 Ellis St. Wichita, KS 67211 P 316-262-7271 F 316-262-0149 ENGINEERING SURVEYING PLANNING LANDSCAPE ARCHITECTURE		
PROJECT NUMBER 472-84344	DESIGN AEG	DRAWN DMV
REVISIONS:	APPROVED DATE 03/08	SCALE Noted SHEET
		8 OF 30