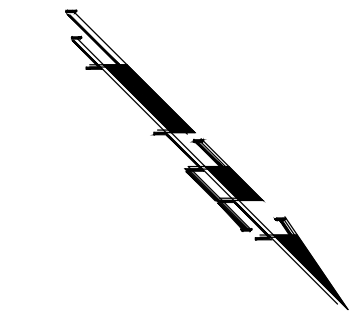


BENCHMARKS:

BM #1: COW Disc in top of curb adjacent to the fire hydrant at the SW corner of Yosemite and Lamp Cir.
Elev. = 146.73 (City Datum)

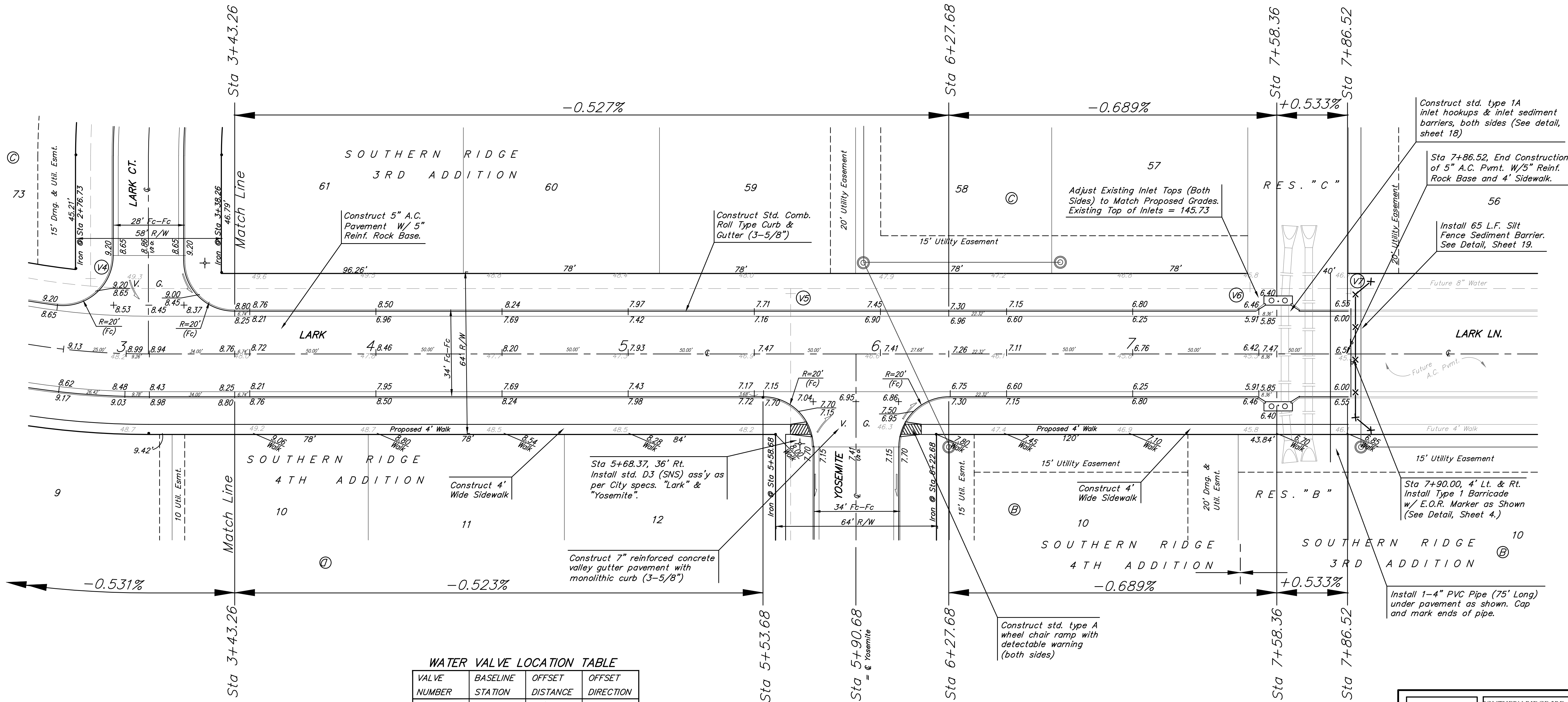
BM #2: COW Disc in top of curb adjacent to the fire hydrant on the west side of Westgate along the southwesterly line of Lot 13, Block B, Southern Ridge Addition.
Elev. = 144.10 (City Datum)



Scale: 1" = 20'
• = Iron

P. V.I.
Elev. = 147.30
No V.C.

P. V.I.
Elev. = 146.40
No V.C.



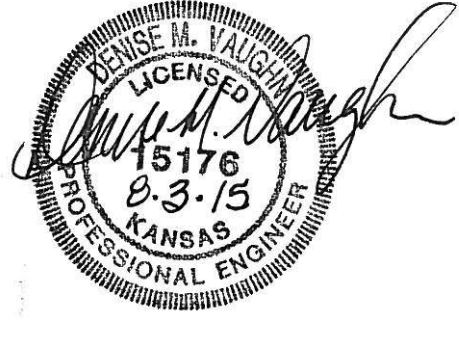
P. V.I.
Elev. = 148.80
No V.C.

P. V.I.
Elev. = 146.40
No V.C.

WATER VALVE LOCATION TABLE

VALVE NUMBER	BASELINE STATION	OFFSET DISTANCE	OFFSET DIRECTION
V5	5+64.68	24'	Lt.
V6	7+46.52	26'	Lt.
V7	7+86.52	26'	Lt.

Paving contractor will be responsible to operate all water valves on the project, in the presence of the inspector, to ensure accessibility to the valves, and that all valves are left in the "ON" position when the project is completed.



Note: Roll Type Curb & Gutter To Be Constructed On The Pavement Shown On This Sheet. Top of Curb Elevations Are Given For Full Height Curb.

Baughman SOUTHERN RIDGE 3RD & 4TH ADD - PH. III
LARK
STA 3+43.26 TO STA 7+86.52

Baughman Company, P.A. 315 Ellis St. Wichita, KS 67211 P 316-262-7271 F 316-262-0149
ENGINEERING | SURVEYING | PLANNING | LANDSCAPE ARCHITECTURE

PROJECT NUMBER 472-84344	DESIGN AEG	DRAWN DMV
REVISIONS:	APPROVED	DATE 03/08
	SCALE Noted	
	SHEET	9 OF 30

SouthernRidge3rd\Phase3\Str1