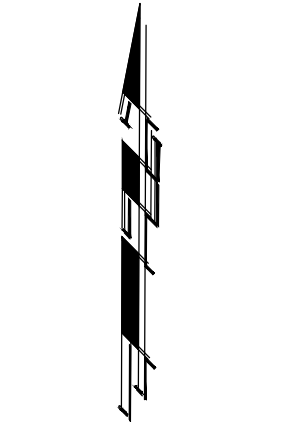


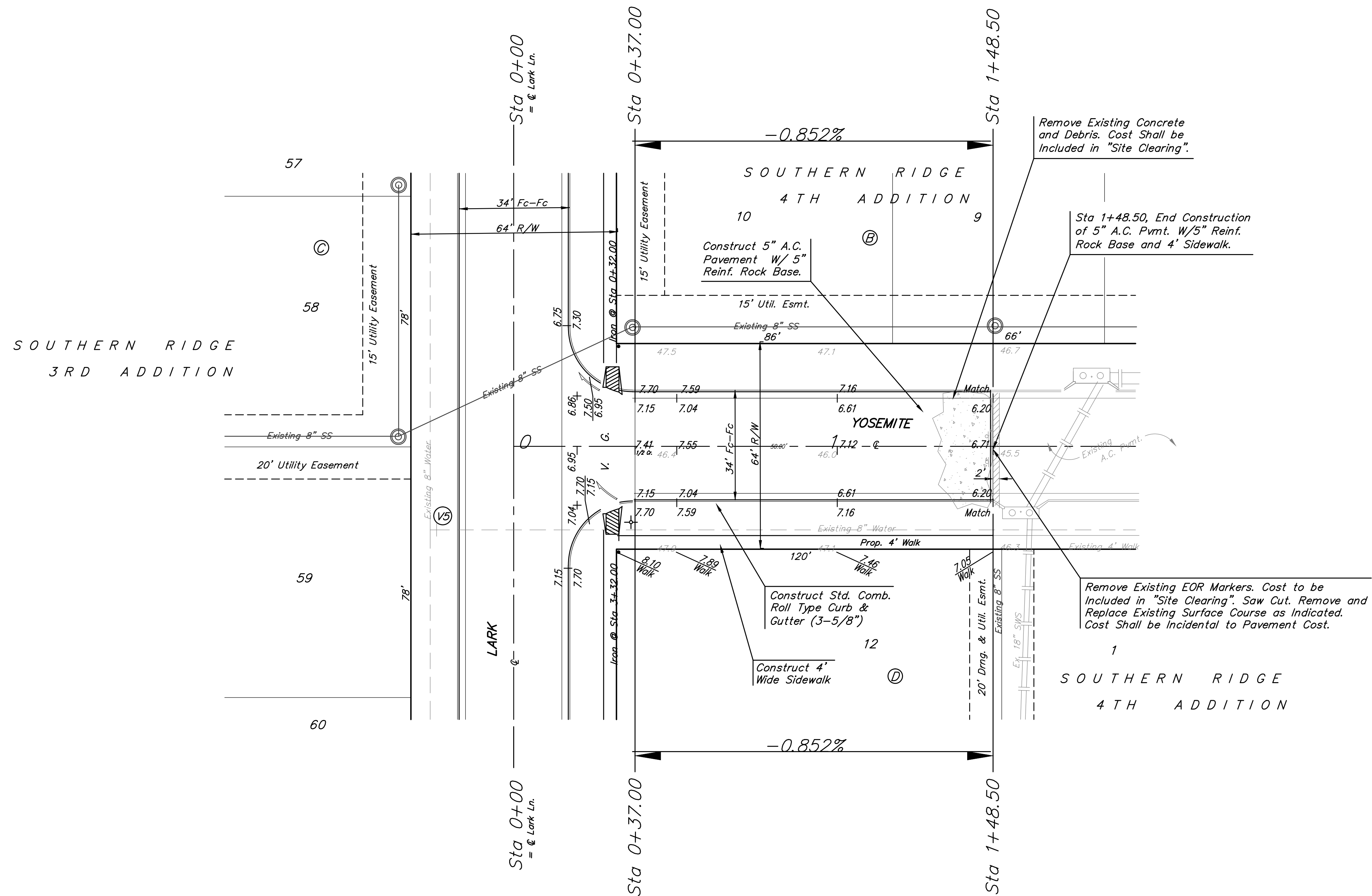
**BENCHMARKS:**

BM #1: COW Disc in top of curb adjacent to the fire hydrant at the SW corner of Yosemite and Lamp Cir.  
Elev. = 146.73 (City Datum)

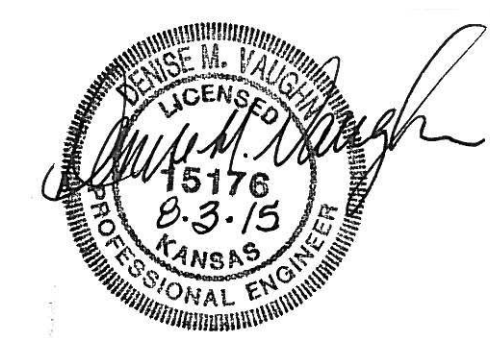
BM #2: COW Disc in top of curb adjacent to the fire hydrant on the west side of Westgate along the southwesterly line of Lot 13, Block B, Southern Ridge Addition.  
Elev. = 144.10 (City Datum)



Scale: 1" = 20'  
• = Iron



Note: Roll Type Curb & Gutter To Be Constructed On The Pavement Shown On This Sheet. Top of Curb Elevations Are Given For Full Height Curb.



<b>B</b> Baughman		SOUTHERN RIDGE 3RD & 4TH ADD - PH. III	
		<b>YOSEMITE</b>	
		STA 0+37.00 TO STA 1+48.50	
Baughman Company, P.A. 315 Ellis St. Wichita, KS 67211 P 316-262-7271 F 316-262-0149 ENGINEERING   SURVEYING   PLANNING   LANDSCAPE ARCHITECTURE			
PROJECT NUMBER 472-84344	DESIGN AEG	DRAWN DMV	
REVISIONS:	APPROVED	DATE 03/08	
	SCALE Noted		
	SHEET		10 OF 30
SouthernRidge3rd\Phase3\Sr1			