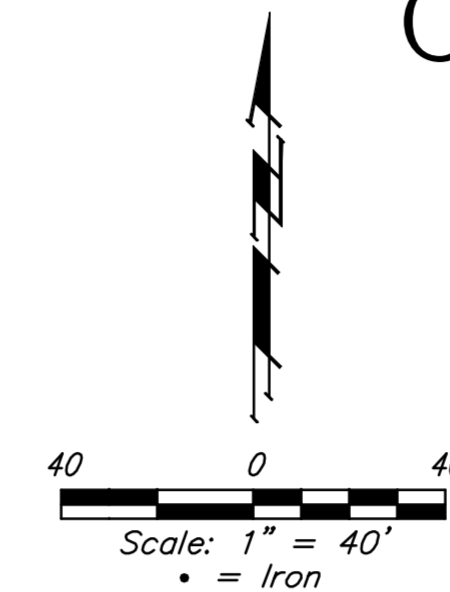


Pavement Improvements to: Greenwich Road Median, South of 13th St. N. Private Project Pavement: 215 PPP (607879) CITY OF WICHITA, KANSAS

Gary Janzen, P.E. Interim City Engineer
April 2012



APPROVED AS NOTED
BY CITY ENGINEER OF WICHITA

Engineering *Paul Baughman*

NOTE TO CONTRACTORS

Installation, inspection and testing for this project is to be provided by a Licensed Consulting Engineering Firm under contract with the Owner/Developer. Said inspection to be in accordance with the City of Wichita standard construction engineering practices and certified by a Licensed Professional Engineer. No work shall be performed in dedicated easements or public right-of-way by the Contractor without such inspection nor shall any work be commenced without written authorization by the City Engineer. All Construction and Materials shall comply with the City of Wichita Specifications and Standards (on file and available in the City Engineer's Office).

Benchmarks

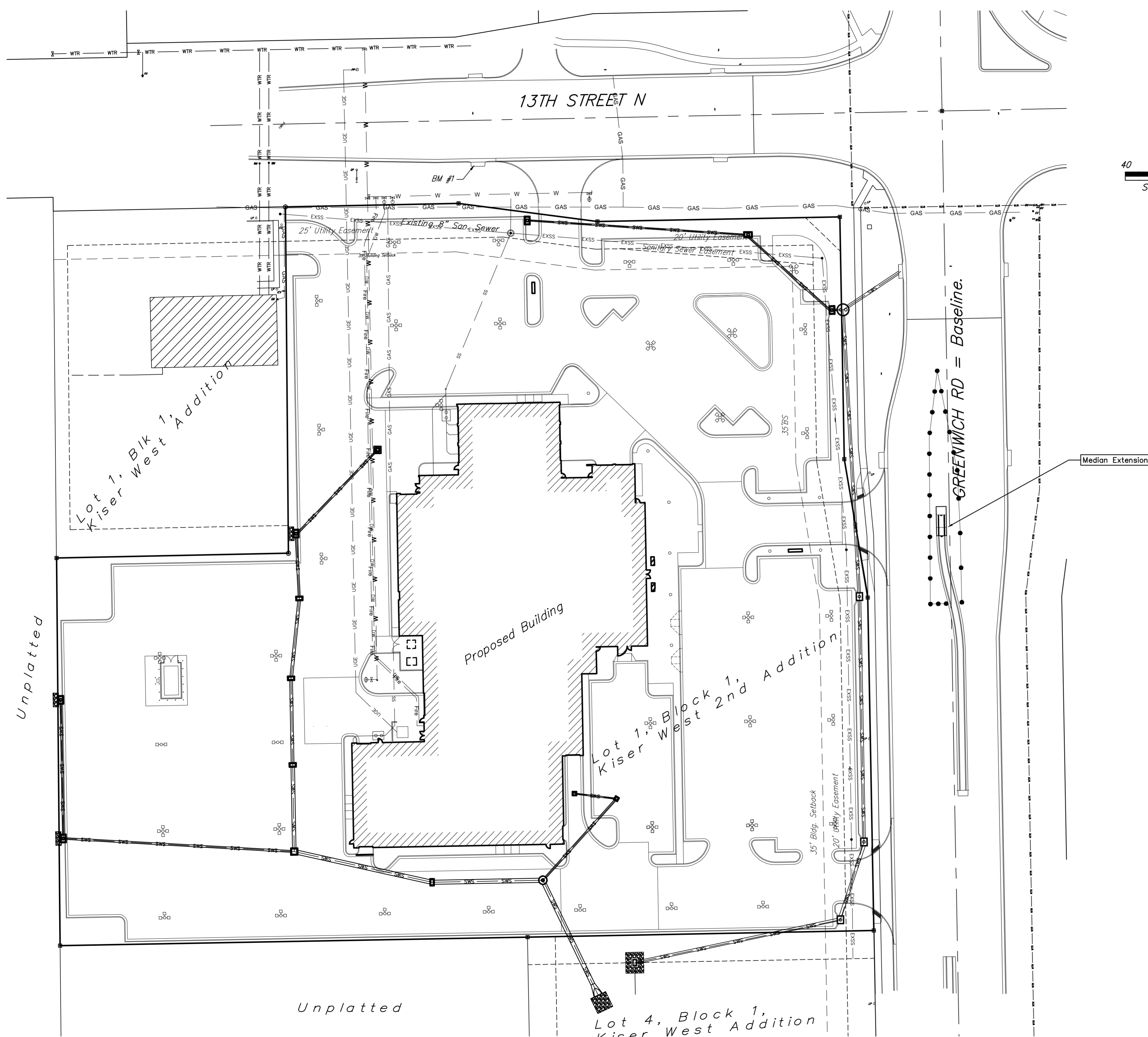
Benchmark-1
Chiseled square on cut on rim of curb inlet, 260' west of NE corner of Site.
Elev. = 1388.30 (NAVD 88)

Sheet Index

Title Sheet	1
Plan	2
Traffic Control Plan	3

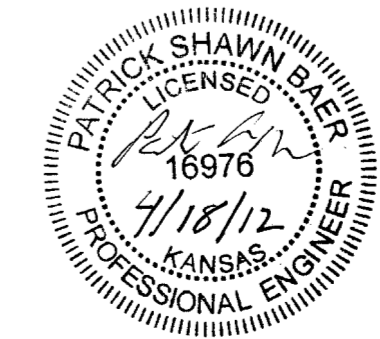
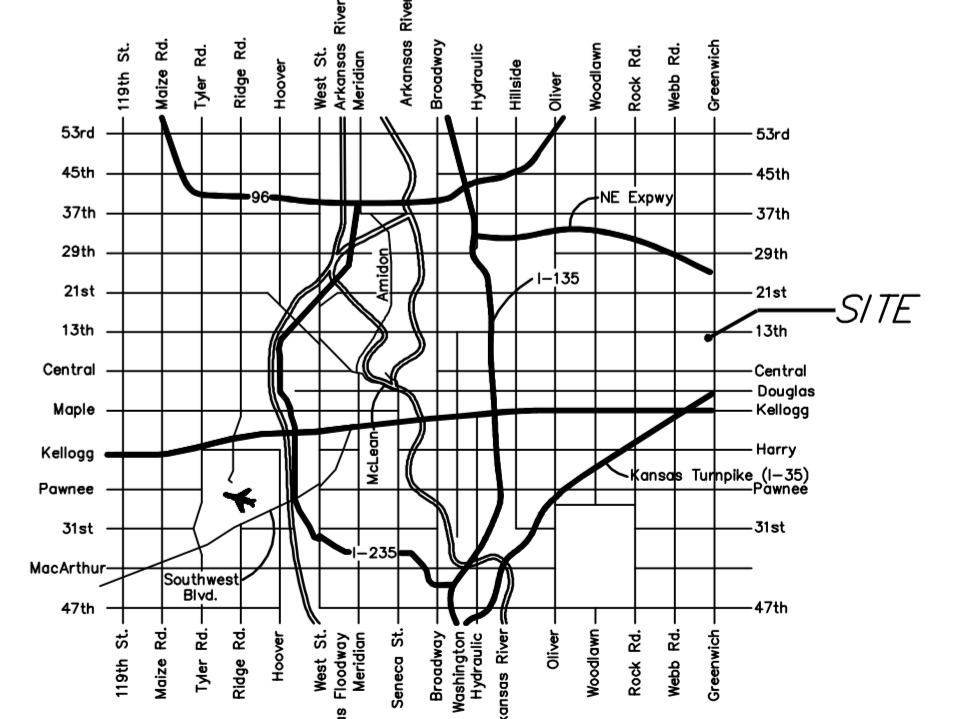
Legal Description

Lot 1, Block 1, Kiser 2nd Addition, & part of Lot 4, Block 1, Kiser West Addition, Wichita, Sedgwick County, Kansas.



GENERAL NOTES:

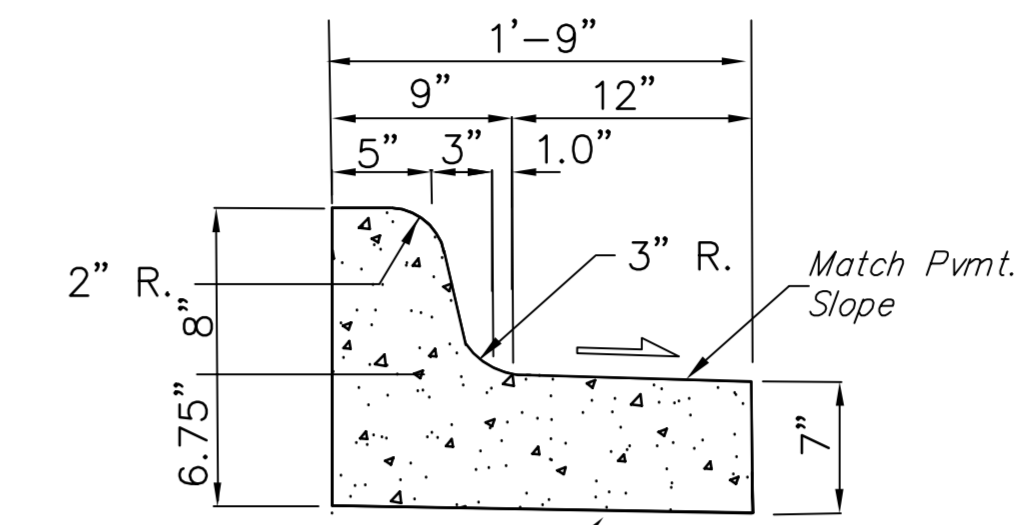
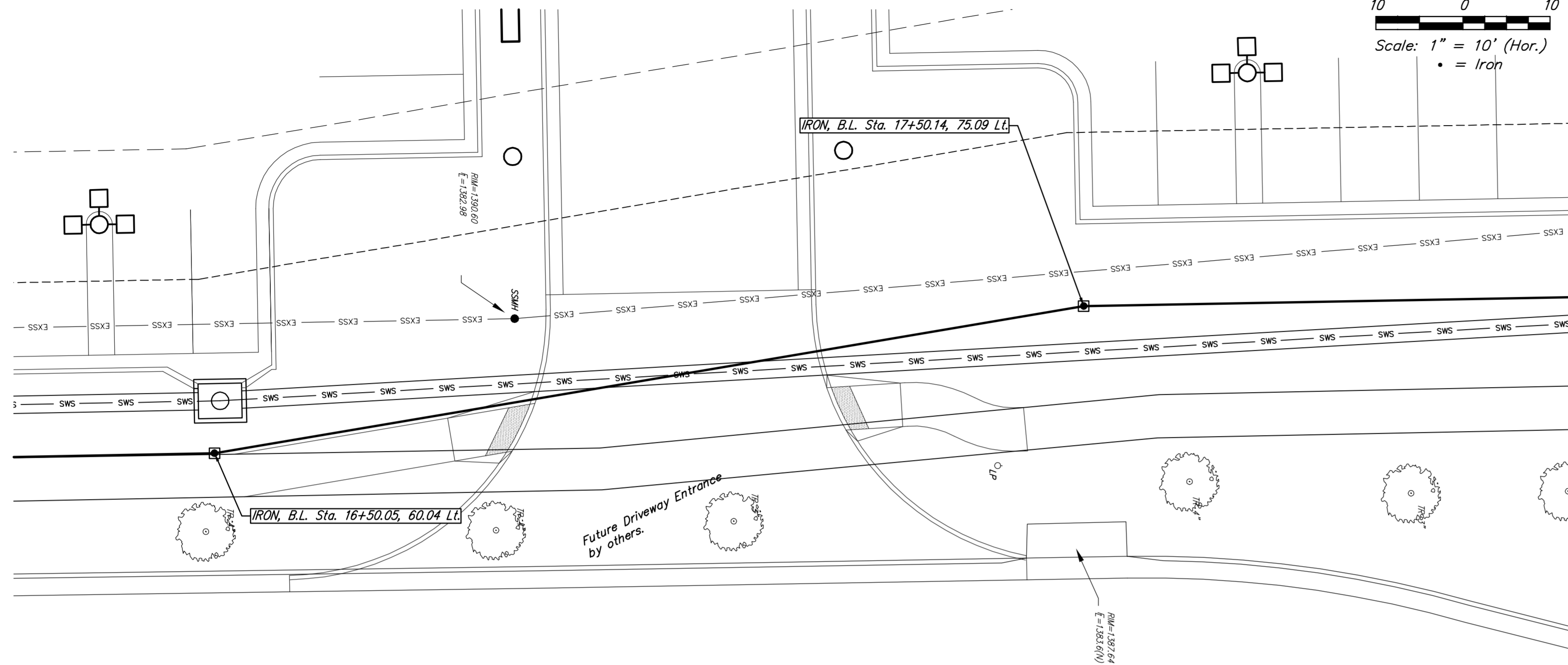
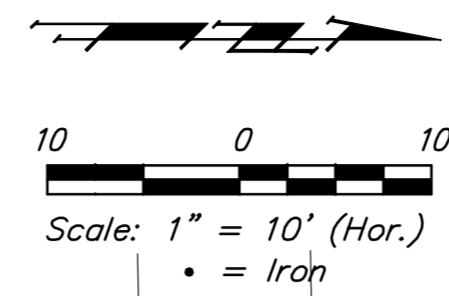
- Contractor will be required to provide notice to utility companies a minimum of forty-eight (48) hours prior to any excavation, as follows:
Kansas One-Call 687-2470
The Contractor must notify the following in case of an emergency:
Cox Communications 262-4270
Kansas Gas Service 1-888-482-4950
Westar Energy 383-8650
Black Hills Energy (Gas) 1-800-303-0357
ATT 268-2245
City of Wichita Water Dept. 268-4563
City of Wichita Sewer Maint. 268-4024
City of Wichita Storm Sewer Maint. 268-4090
City of Wichita Traffic Maint. 268-4034
- Utility service lines, poles, valve boxes, meters, and etcetera are to be adjusted as necessary by others prior to construction unless the plans specifically call for their adjustment by the Contractor or unless the plans specifically identify a utility to be adjusted by its owner during construction. Existing utilities and their location, as shown on the plans, represent the best information obtainable for design. The Contractor will be required to work around existing utilities within the right-of-way which do not conflict with proposed construction.
- Rubble from the removal of miscellaneous structures and excess excavation which is to be wasted shall be disposed of on sites to be provided by the Contractor. These sites shall be approved by the Engineer as to suitability, appearance and site location. Locations, in the opinion of the Engineer, that will leave an unsightly appearance will not be approved. All disposal sites must be approved by the Kansas Department of Health and Environment. Material either stockpiled or disposed of in a flood plain would require a Kansas State Board of Agriculture permit. Any material dumped in waters of the United States or wetlands is subject to U.S. Corps. of Engineers permitting regulations. Any material buried or stockpiled beyond approved construction limits would require additional archaeological investigations unless buried in a previously approved borrow location.
- Contractor shall furnish the inspector with a copy of the manufacturer's certification for Materials used on this project. The engineer will not certify the project to the city until certification has been received.
- Contractor shall not start work on the project until the project inspector is assigned to the project and is present on the site. Contractor shall not start on the project until all necessary bonds and permits have been obtained. Bonds may include but are not limited to Statutory, Performance & Maintenance. Any work done without inspection will be required to be uncovered for inspection.
- The Baseline for this project is the Centerline of Greenwich Road, with intersection of 13th Street N. = Station 20+00. Existing property iron locations are shown on sheet 2 of these plans, per the baseline.



Baughman Company, P.A. 315 Ellis St. Wichita, KS 67211 P 316-262-0149
ENGINEERING | SURVEYING | PLANNING | LANDSCAPE ARCHITECTURE

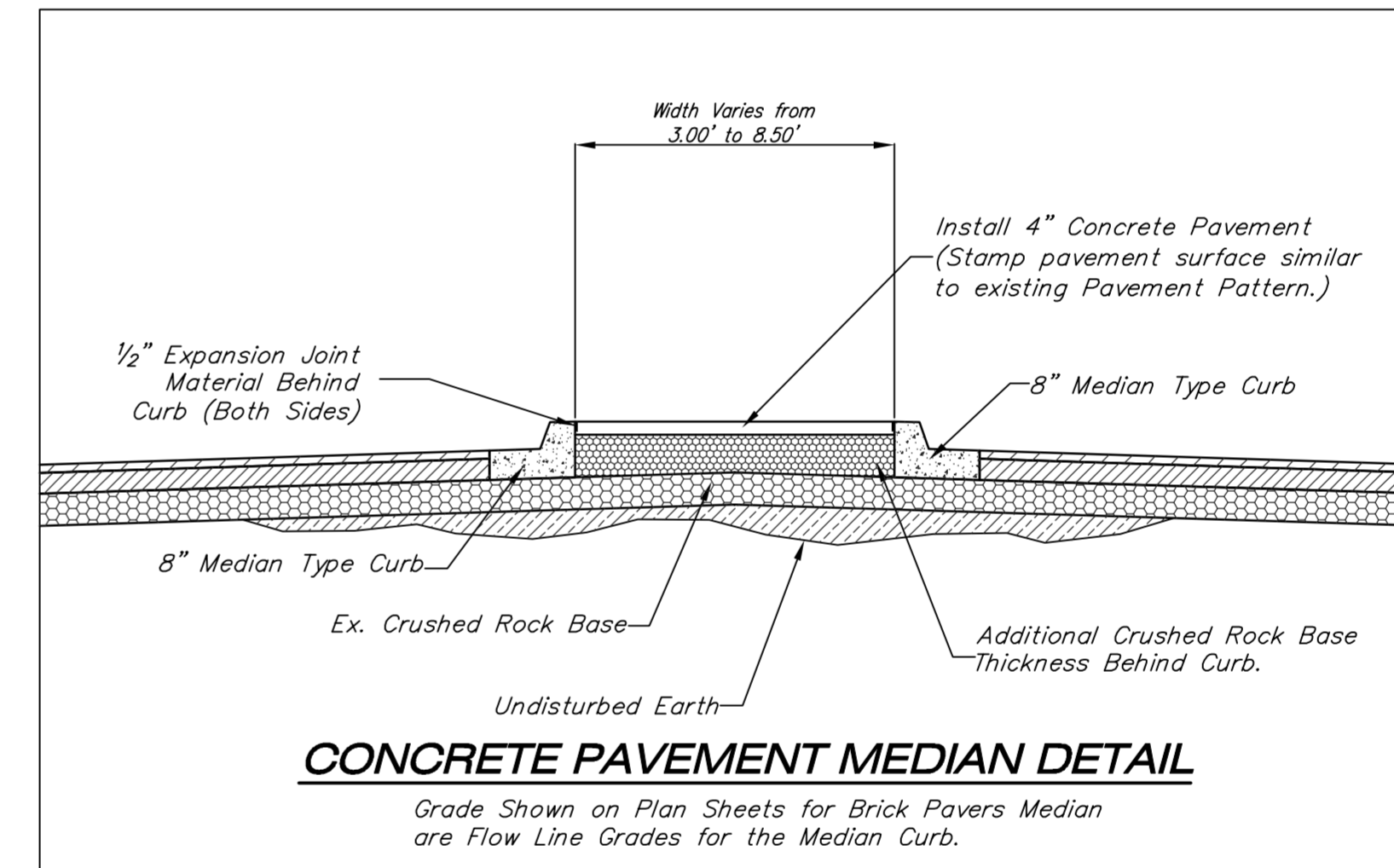
Benchmarks

Benchmark-1
Chiseled square on cut on rim of curb inlet, 260' west of NE corner of Site.
Elev. = 1388.30 (NAVD 88)



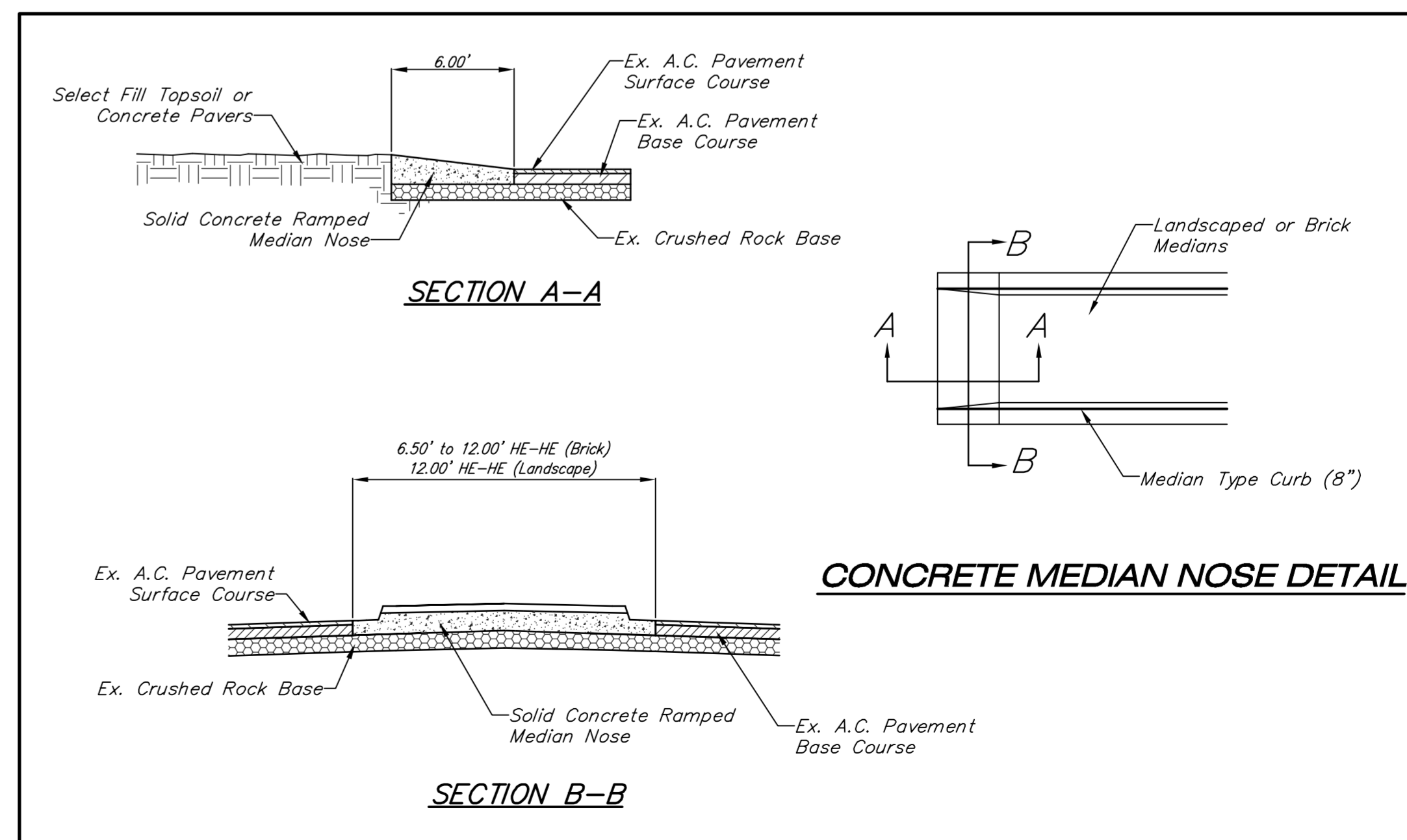
SLOPE SAME AS PAVEMENT SUBGRADE

COMBINED CURB & GUTTER TYPE 4 (8") (1.75' WIDTH)



CONCRETE PAVEMENT MEDIAN DETAIL

Grade Shown on Plan Sheets for Brick Pavers Median are Flow Line Grades for the Median Curb.



CONCRETE MEDIAN NOSE DETAIL

