

### GENERAL NOTES

- UNLESS SHOWN OR STATED OTHERWISE ON THESE DRAWINGS, MATERIALS AND CONSTRUCTION SHALL BE IN ACCORDANCE WITH CITY OF WICHITA CONCRETE PAVEMENT AND ASPHALTIC CONCRETE PAVEMENT SPECIFICATIONS.
- CONTRACTOR WILL BE REQUIRED TO PROVIDE A MINIMUM ADVANCE NOTICE OF SEVENTY-TWO (72) HOURS TO UTILITY COMPANIES PRIOR TO STARTING ANY EXCAVATION AS FOLLOWS:  
KANSAS ONE-CALL 1-800-344-7233  
OR 687-2470 (LOCAL WICHITA)  
THE CONTRACTOR MUST NOTIFY THE FOLLOWING IN CASE OF AN EMERGENCY:  
SBC (TELEPHONE) 800-870-8390  
COX COMMUNICATIONS (CABLE) 262-0661  
WESTAR (ELECTRIC) 383-8600  
KANSAS GAS SERVICE (GAS) 832-3101  
CITY OF WICHITA WATER & SEWER MAINT. 262-6000  
BLACK HILLS ENERGY (GAS) 800-303-0357
- THE CONTRACTOR SHALL BE RESPONSIBLE FOR PRESERVING PROPERTY IRONS. THE CONTRACTOR WILL BE REQUIRED TO RE-ESTABLISH ANY PROPERTY IRONS WHICH ARE DAMAGED OR DESTROYED BY HIS CONSTRUCTION OPERATIONS. SUCH IRONS SHALL BE RE-ESTABLISHED BY A LICENSED LAND SURVEYOR IN ACCORDANCE WITH STATE LAWS.
- EXISTING UTILITIES AND THEIR LOCATIONS, AS SHOWN ON THE PLANS REPRESENT THE BEST INFORMATION OBTAINABLE FOR DESIGN. LOCATION INFORMATION HAS BEEN OBTAINED FROM THE VARIOUS UTILITY COMPANIES AND IS EITHER FROM COMPANY RECORD DRAWINGS OR COMPANY PROVIDED FIELD LOCATIONS. THE PLAN LOCATIONS SHOWN ARE NOT GUARANTEED. ADDITIONAL EXISTING UTILITIES MAY ALSO BE ENCOUNTERED.
- RUBBLE FROM THE REMOVAL OF MISCELLANEOUS STRUCTURES AND EXCESS EXCAVATION WHICH IS TO BE WASTED SHALL BE DISPOSED OF ON SITES TO BE PROVIDED BY THE CONTRACTOR. THESE SITES SHALL BE APPROVED BY THE ENGINEER AS TO SUITABILITY, APPEARANCE AND SITE LOCATION. LOCATIONS THAT, IN THE OPINION OF THE ENGINEER, WILL LEAVE AN UNSIGHTLY APPEARANCE WILL NOT BE APPROVED. ALL DISPOSAL SITES MUST BE APPROVED BY THE KANSAS DEPARTMENT OF HEALTH AND FLOOD PLAIN WOULD REQUIRE A KANSAS STATE BOARD OF AGRICULTURE PERMIT. ANY MATERIAL DUMPED IN WATERS OF THE UNITED STATES OR WETLANDS IS SUBJECT TO U.S. CORPS OF ENGINEERS PERMITTING REGULATIONS. ANY MATERIAL BURIED OR STOCKPILED BEYOND APPROVED CONSTRUCTION LIMITS WOULD REQUIRE ADDITIONAL ARCHAEOLOGICAL INVESTIGATIONS UNLESS BURIED IN A PREVIOUSLY APPROVED BORROW LOCATION.
- ALL COMPACTION OF EARTHWORK SHALL BE 95% STANDARD DENSITY (ASTM D-698).
- A SAW CUT OF AT LEAST ONE-HALF THE DEPTH OF THE EXISTING SURFACE COURSES OR ONE-FOURTH THE DEPTH OF THE EXISTING TOTAL PAVEMENT THICKNESS SHALL BE PROVIDED AT LOCATIONS WHERE PROPOSED CONSTRUCTION ABUTS AN EXISTING SURFACE OR PAVEMENT FOR WHICH PARTIAL REMOVAL OF THAT SURFACE OR PAVEMENT IS REQUIRED. SAW JOINT TO FACILITATE REMOVAL WITHIN THREE (3) FEET OF EXISTING JOINTS WILL NOT BE PERMITTED AND FOR SUCH INSTANCES THE LIMITS OF REMOVAL SHALL EXTEND TO THE EXISTING JOINT. SUCH SAW CUTS WILL NOT BE PAID FOR DIRECTLY AND THIS COST SHALL BE CONSIDERED AS SUBSIDIARY TO THE REMOVAL OF SURFACE OR PAVEMENT.
- CONTRACTOR SHALL RESEED AND MULCH ALL DISTURBED AREAS. COST SHALL BE CONSIDERED SUBSIDIARY TO SITE RESTORATION.

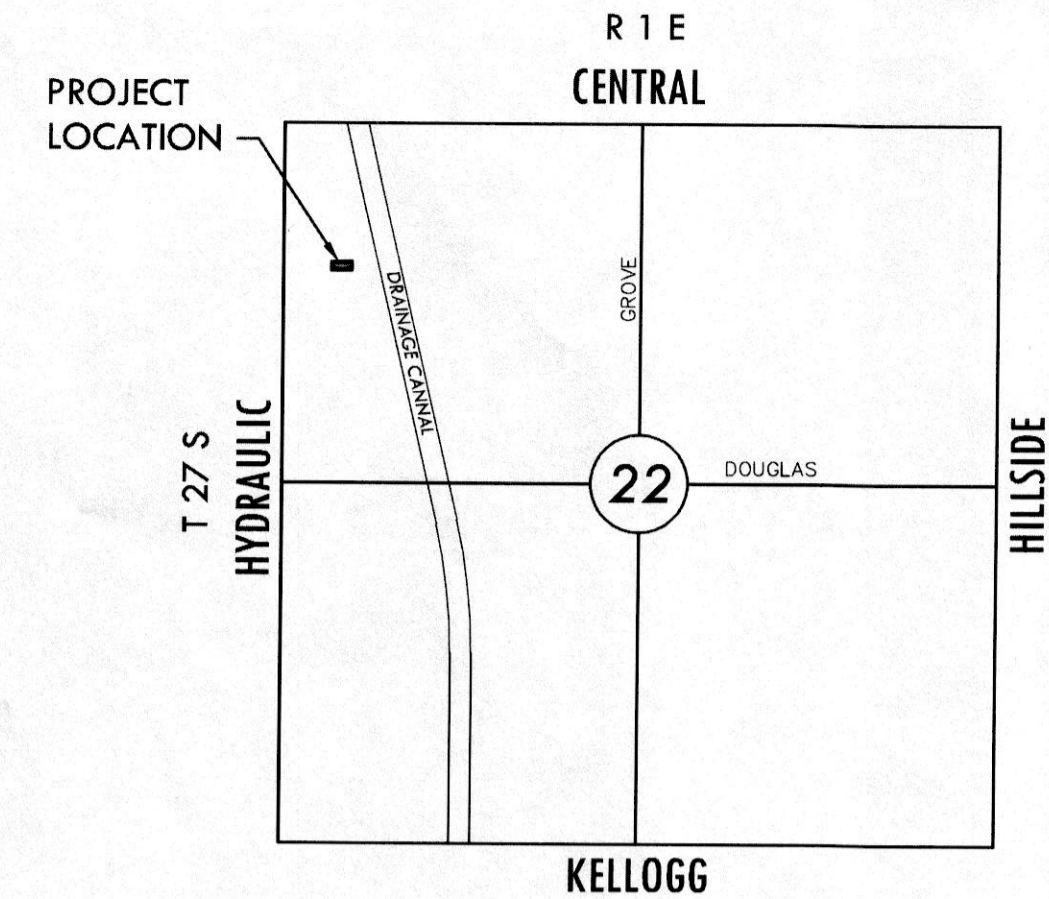
# PRIVATE PAVING PLANS FOR OWSLEY PLACE ADDITION

AN ADDITION TO THE CITY OF WICHITA  
SEDGWICK COUNTY, KANSAS

PROJECT NO. 0219PPP

GARY L. JANZEN, P.E. - CITY ENGINEER

OCA 607879

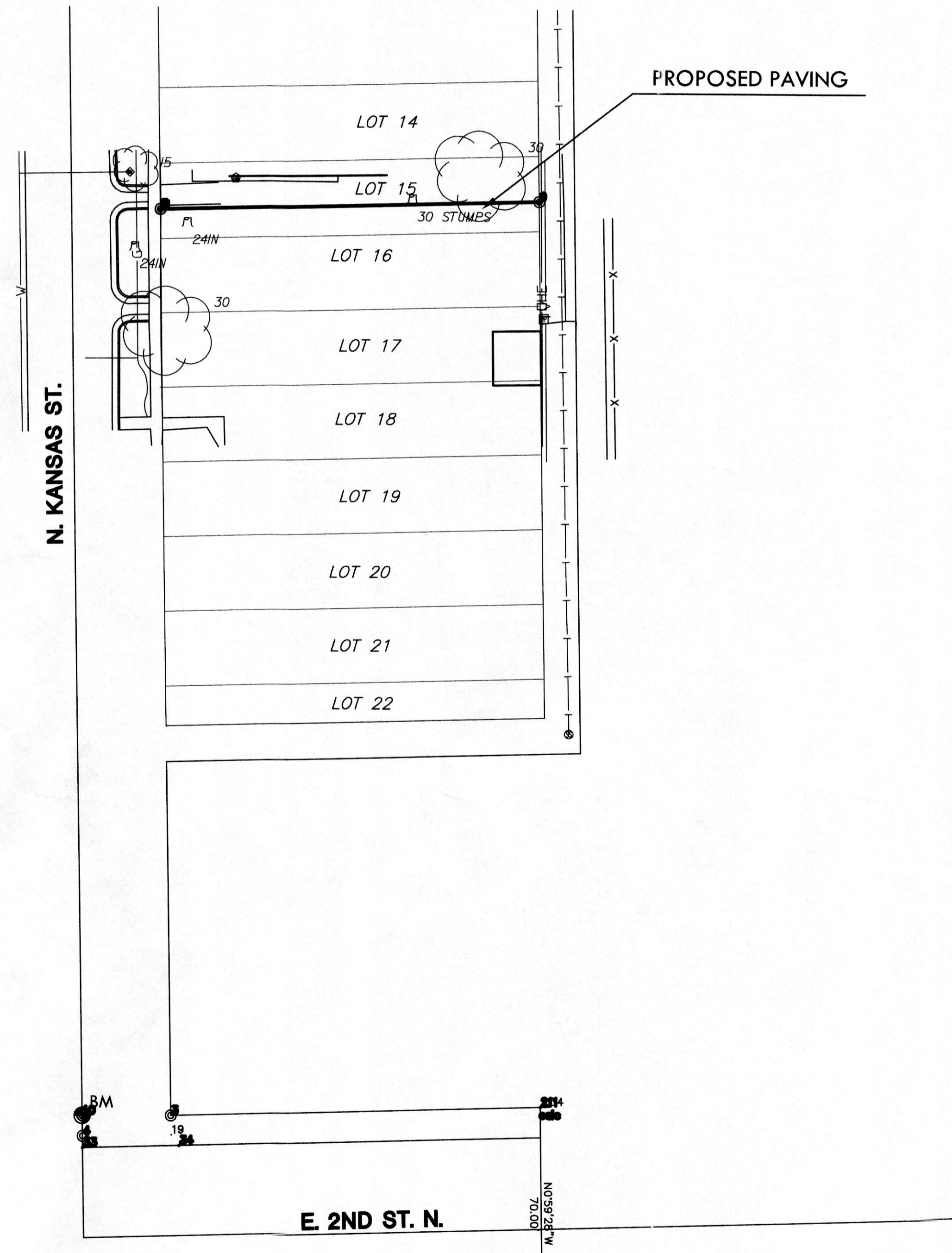


### VICINITY MAP

No Scale

### INDEX TO DRAWINGS

SHEET NO.	DESCRIPTION
1	TITLE SHEET
2	DEMOLITION PLAN
3	PAVING PLAN
4	PAVING DETAILS



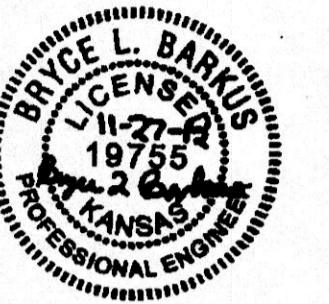
APPROVED AS NOTED  
BY CITY ENGINEER OF WICHITA

Private Paving *[Signature]* 11-27-12

### NOTE TO CONTRACTORS

Inspection and supervision of testing is to be provided by a Licensed Consulting Engineering Firm under contract with the Owner/Developer. Said inspection to be in accordance with the City of Wichita Standard Construction Engineering Practices and certified by a Licensed Professional Engineer. No work shall be performed in dedicated easements or public right-of way by the Contractor without such inspection, nor shall any work be commenced without written authorization by the City Engineer. All Construction and Materials shall comply with the City of Wichita Specifications and Standards (on file and available in the City Engineer's Office).

**MKEC**  
ENGINEERING  
CONSULTANTS, INC.  
411 N. WEBB ROAD  
WICHITA, K.S. 67206  
316-684-9600



PRIVATE PAVING PLANS FOR  
**OWSLEY PLACE ADDITION**  
YOST AUTOMOTIVE

### TITLE SHEET

SHEET TITLE  
**0219PPP**  
PROJECT NUMBER

SPE / SPE / BLB  
DESIGNED / DRAWN / CHECKED

ISSUED  
**NOVEMBER 2012**

REVISED

SHEET NO.  
**1 of 4**

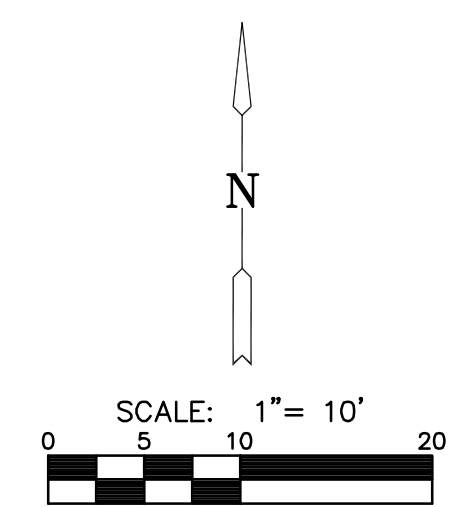
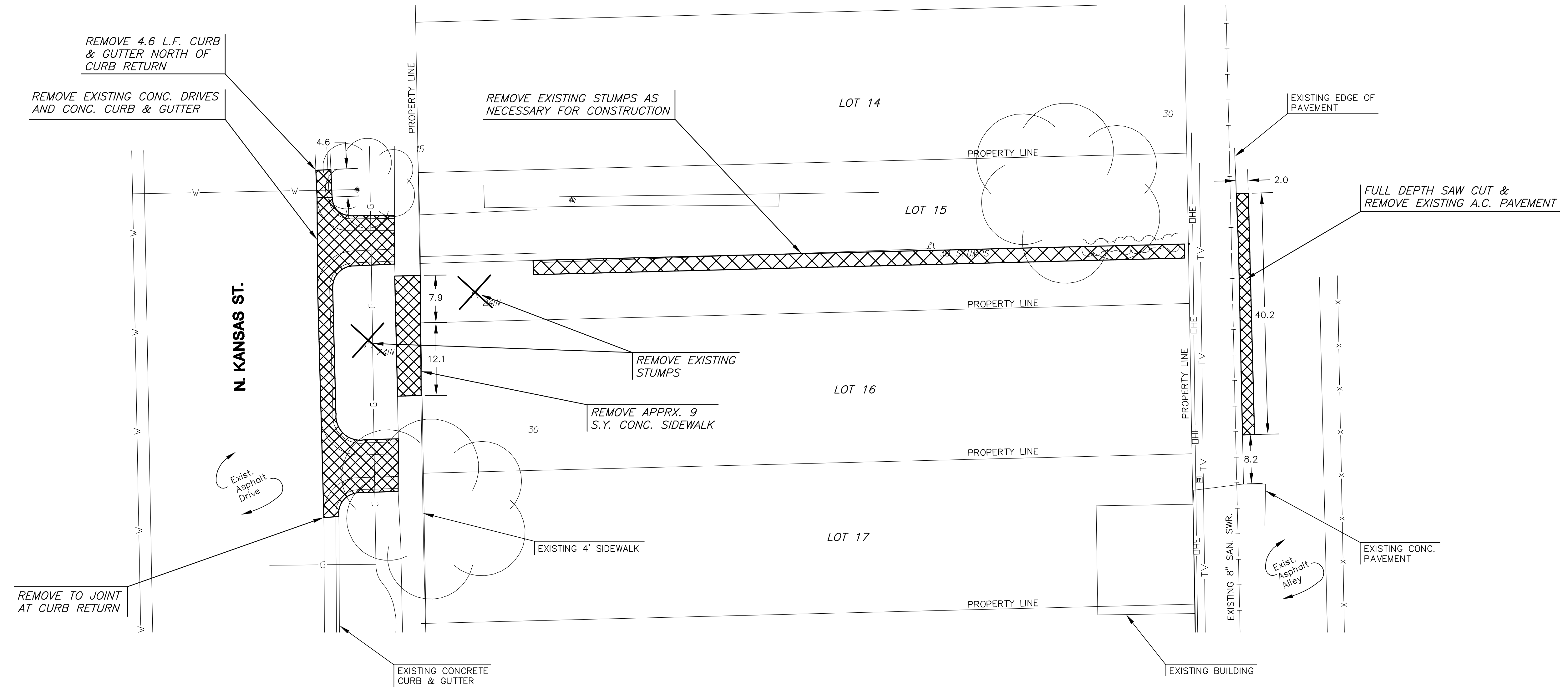
J:\PROJECTS\2012\1201010585 YOST VACATION CASE\9-CIVIL\CAO\PAV\12585\_ET.DWG

PLOTTED: Tuesday, November 27, 2012 @ 08:34AM

### BENCHMARKS

BM  
CENTERLINE OF KANSAS STREET, 35' NORTH OF  
KANSAS STREET AND 2ND STREET INTERSECTION.  
ELEV.=1297.91 (NAVD 88)

PRIVATE PAVING PLANS FOR  
**OWSLEY PLACE ADDITION**  
YOST AUTOMOTIVE



PLOTTED: Tuesday, November 27, 2012 @ 08:36AM

**DEMOLITION PLAN**

SHEET TITLE  
**0219PPP**

PROJECT NUMBER

---

**SPE / SPE / BLB**

DESIGNED / DRAWN / CHECKED

---

ISSUED  
**NOVEMBER 2012**

REVISED

---

SHEET NO.  
**2 of 4**

J:\PROJECTS\2012\1201010585 YOST VACATION CASE\5-CIVIL\CAD\PAV\12585\_ET\_DEMO.DWG



PRIVATE PAVING PLANS FOR  
**OWSLEY PLACE ADDITION**  
YOST AUTOMOTIVE

**PAVING DETAILS**

SHEET TITLE  
**0219PPP**  
PROJECT NUMBER

**SPE / SPE / BLB**  
DESIGNED / DRAWN / CHECKED

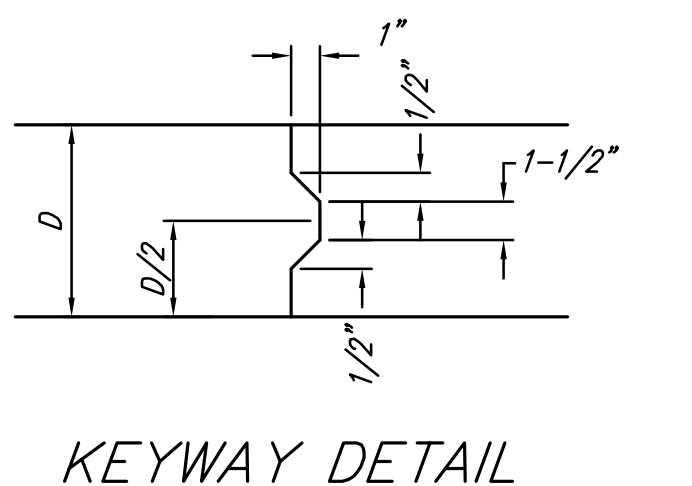
ISSUED  
**NOVEMBER 2012**

REVISED

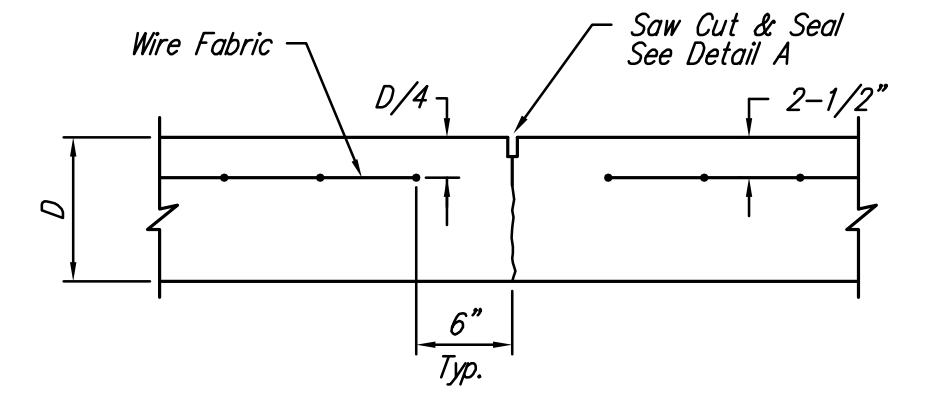
SHEET NO.

J:\PROJECTS\2012\1201010585 YOST VACATION CASE\5-CIVIL\CAD\PAV\12585\_ED1.DWG

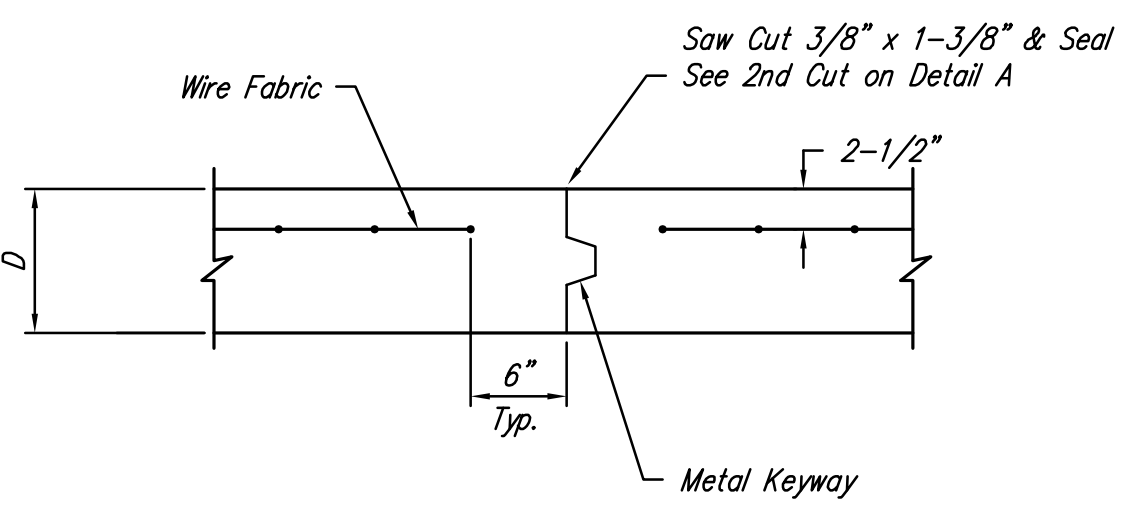
PLOTTED: Tuesday, November 27, 2012 @ 08:36AM



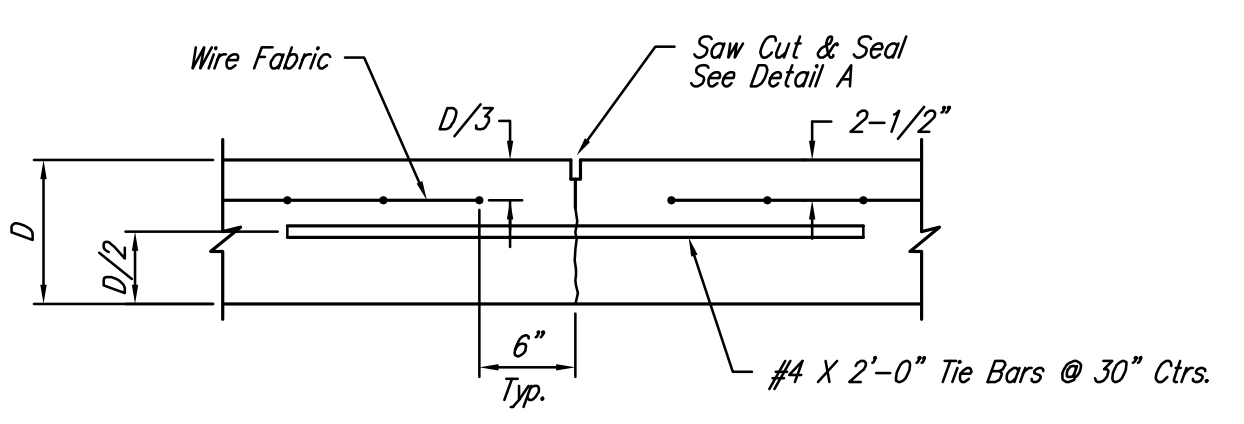
KEYWAY DETAIL



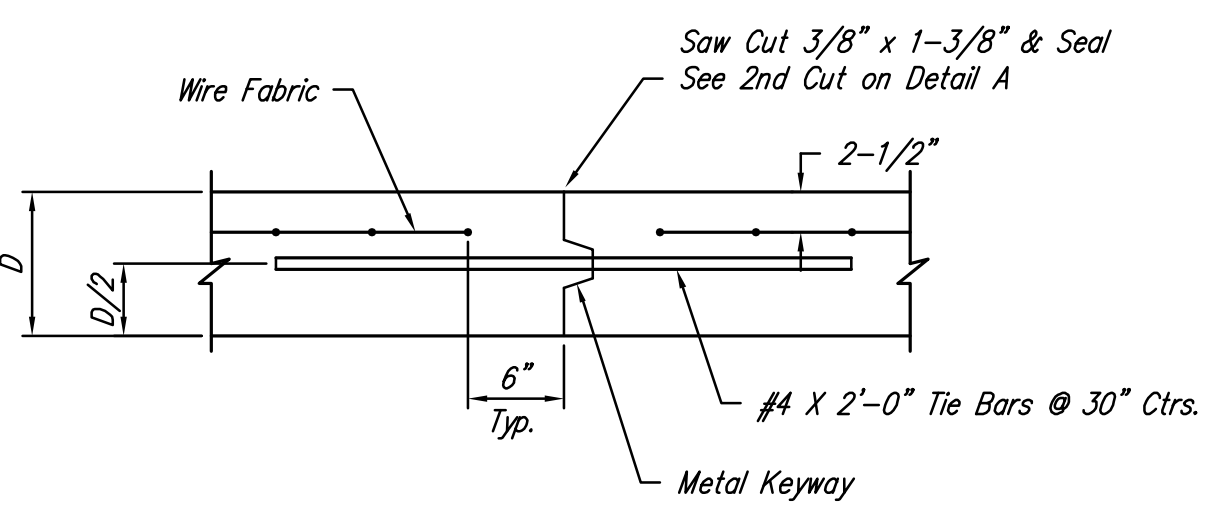
CONTRACTION JOINT DETAIL (C.J.)



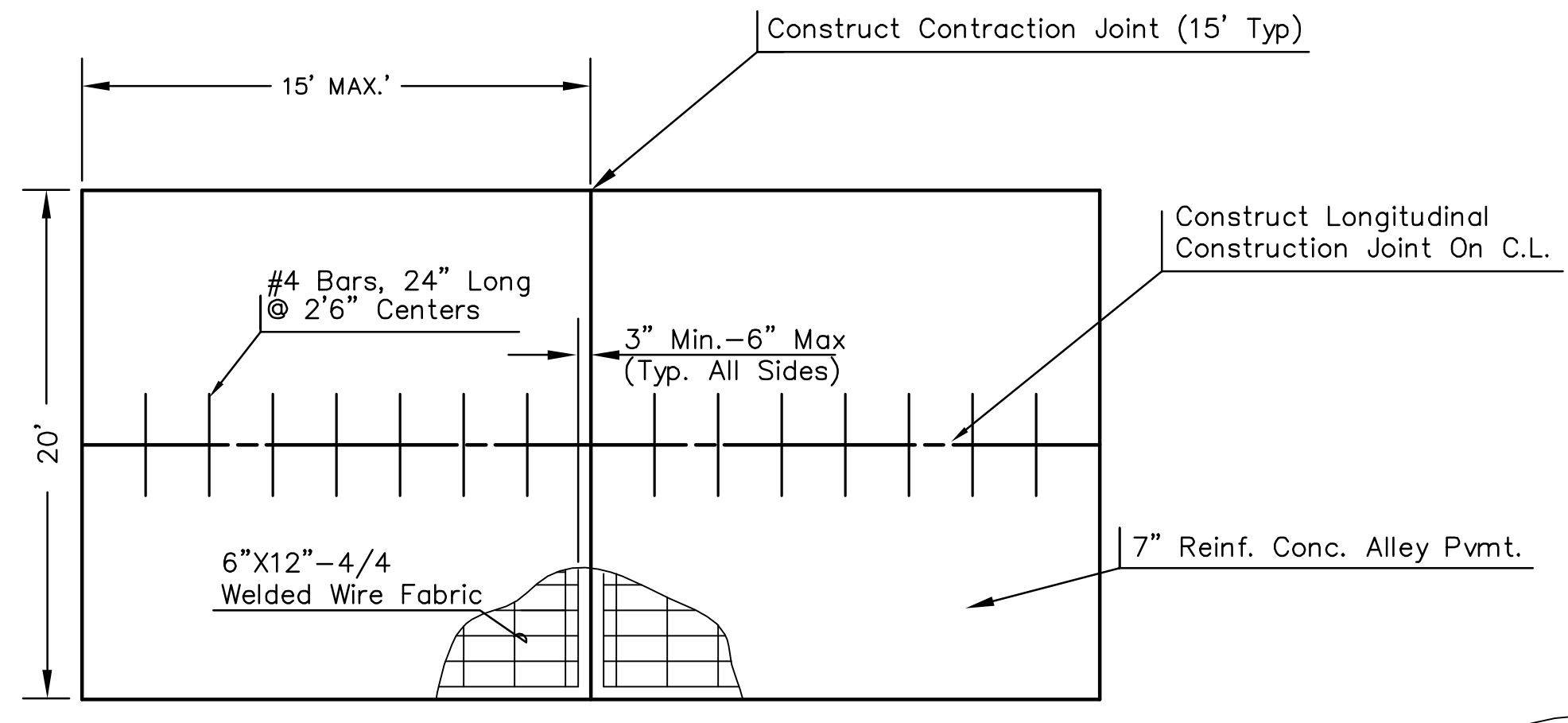
OPTIONAL CONTRACTION JOINT



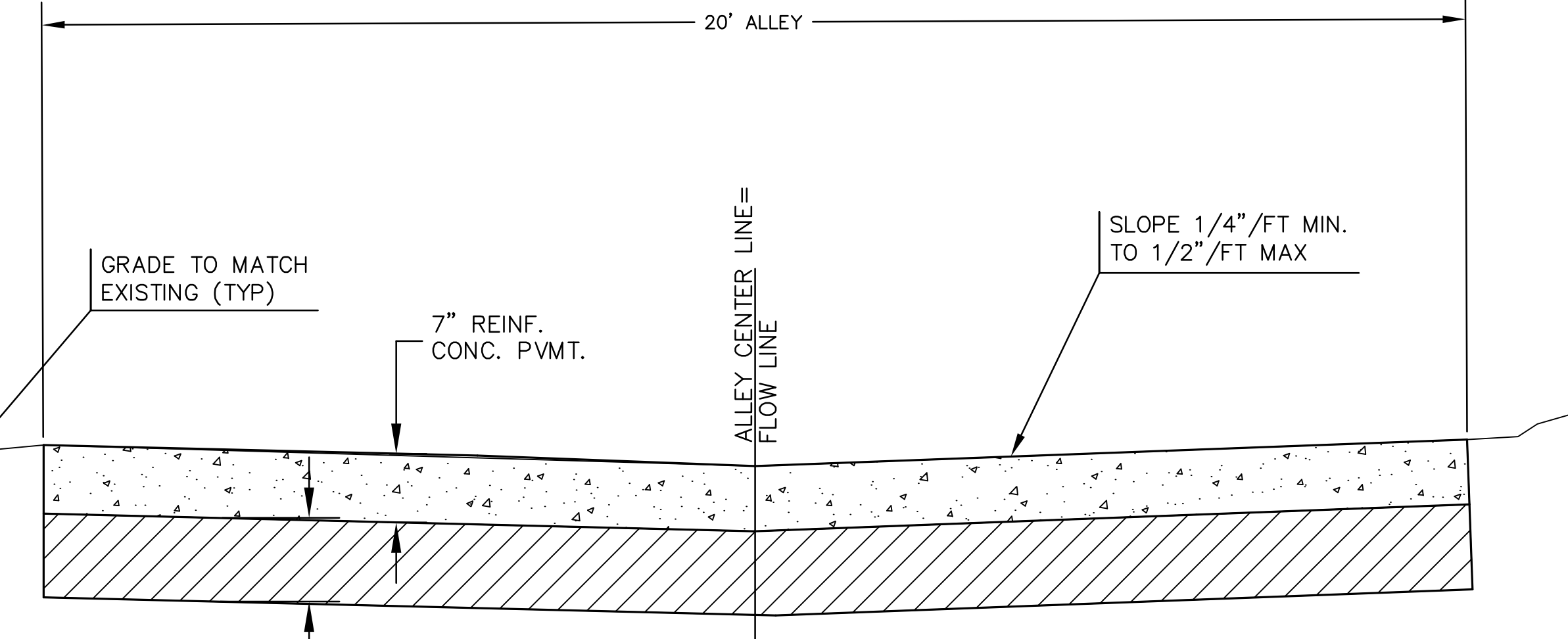
LONGITUDINAL JOINT DETAIL (L.J.)



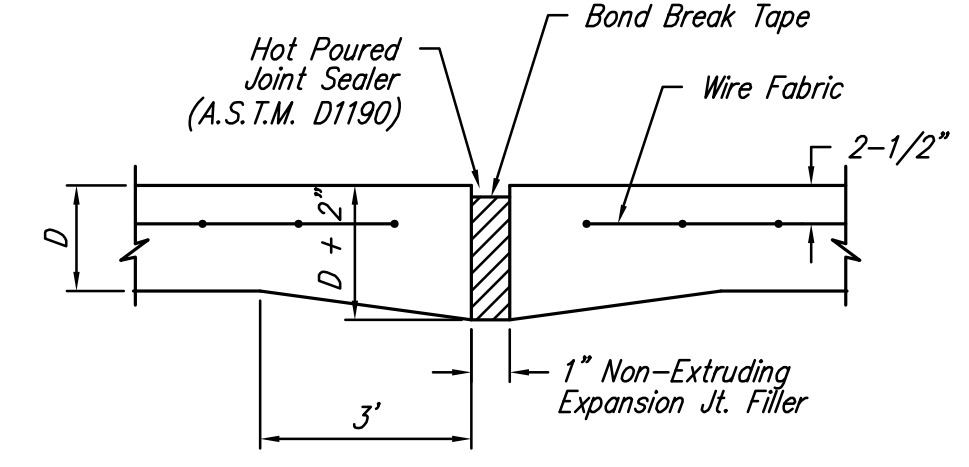
OPTIONAL LONGITUDINAL JOINT DETAIL (L.J.)



SLAB REINFORCED DETAIL

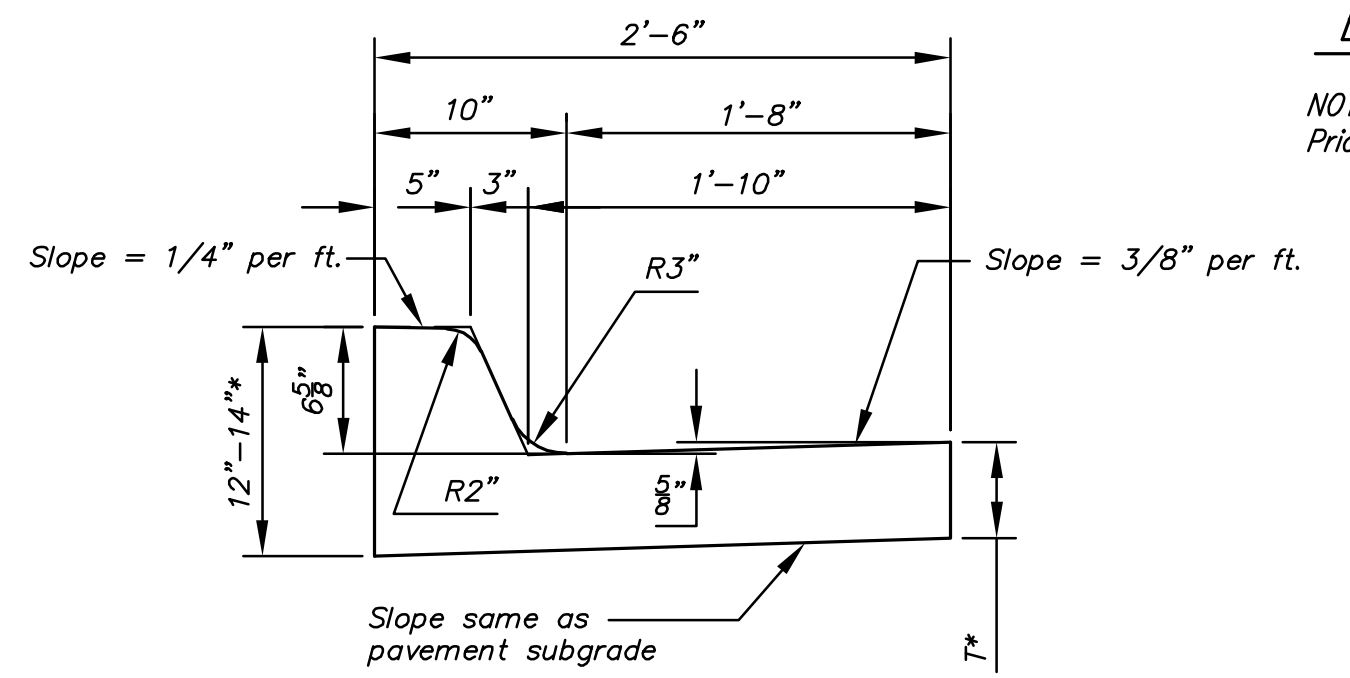


TYPICAL PAVEMENT SECTION

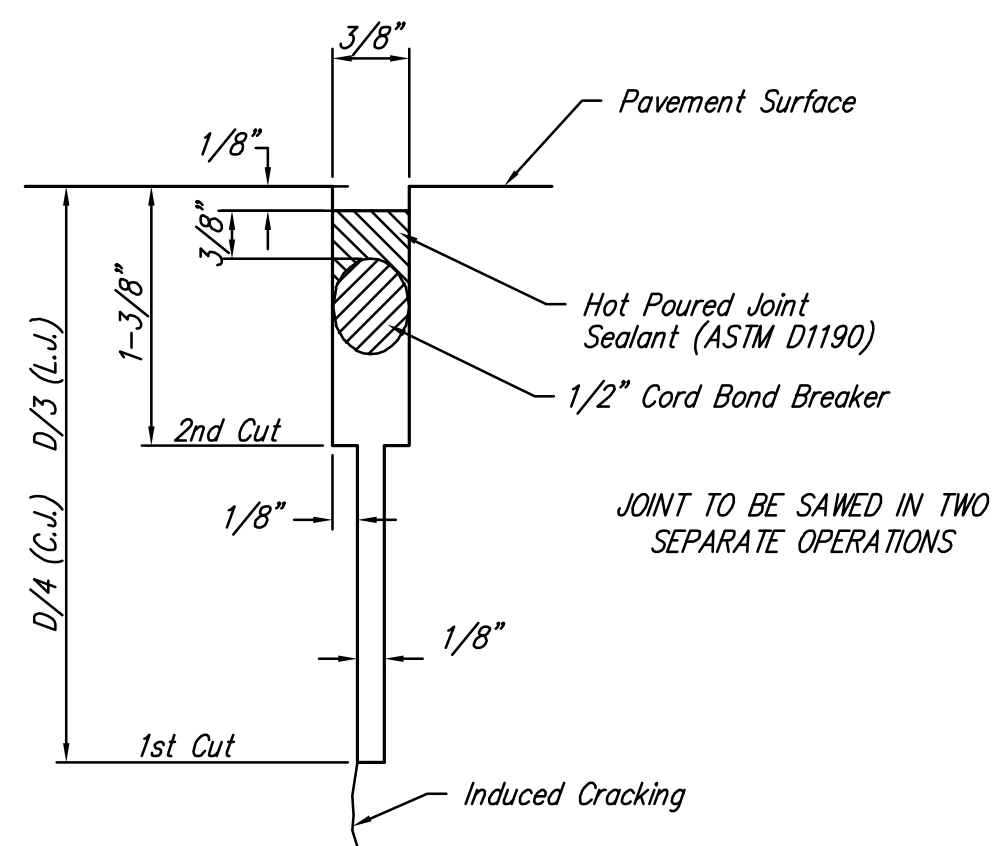


EXPANSION JOINT

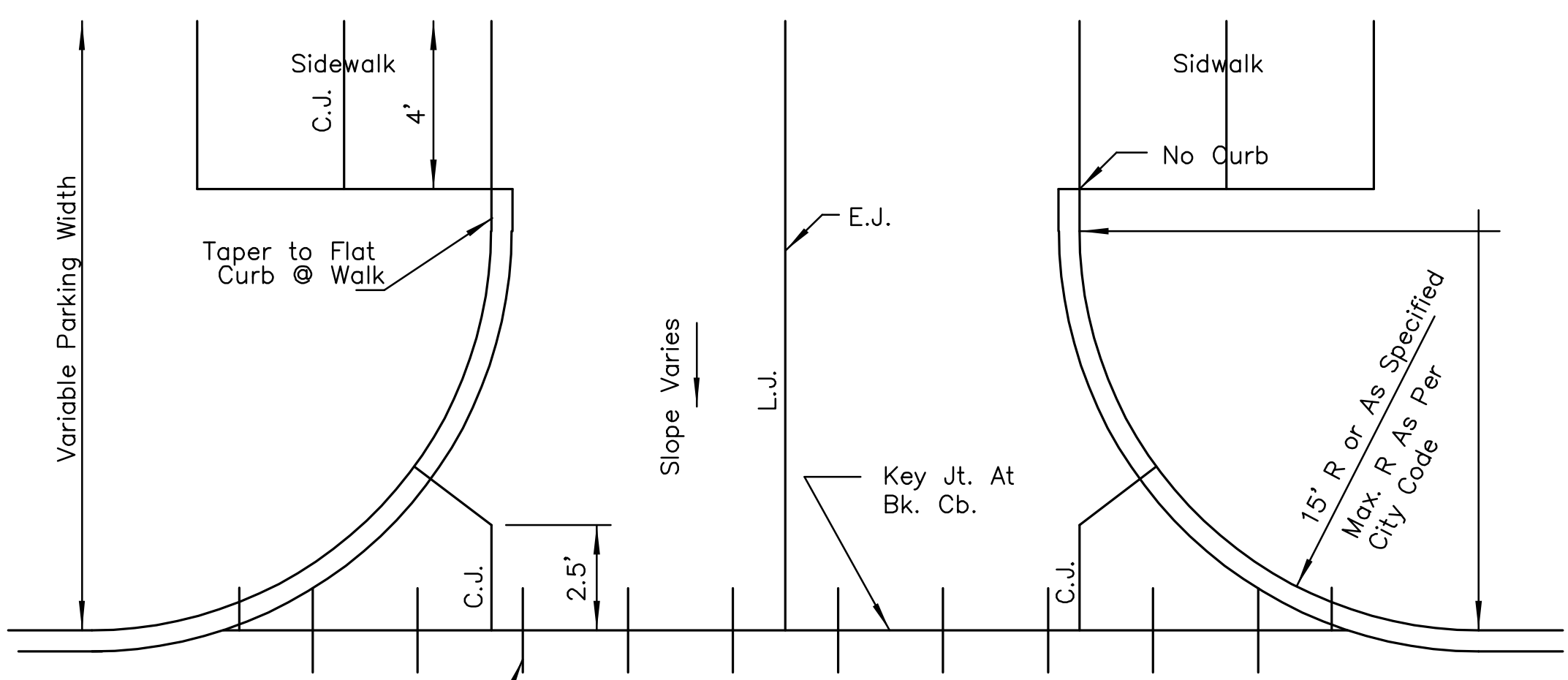
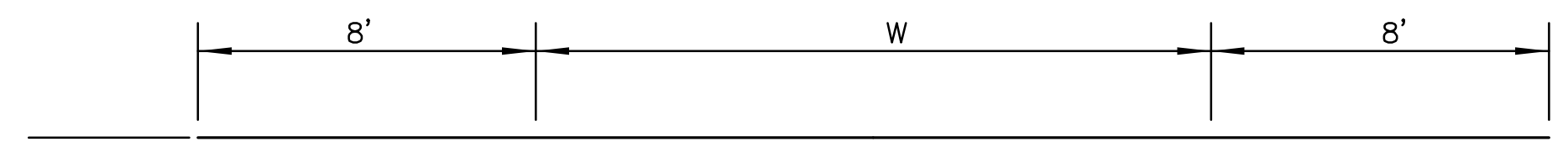
NOTE: Extra Thickness to be Subsidiary to Price of Square Yards Pavement



COMBINED CURB & GUTTER



SAW JOINT DETAIL



Use Ramp-Type Approach when distance between fc. wk. & bk. cb. is 8'-0" or less. Where parking width is 8'-0" or less ramp shall be constructed full width.

ALLEY APPROACH DETAIL