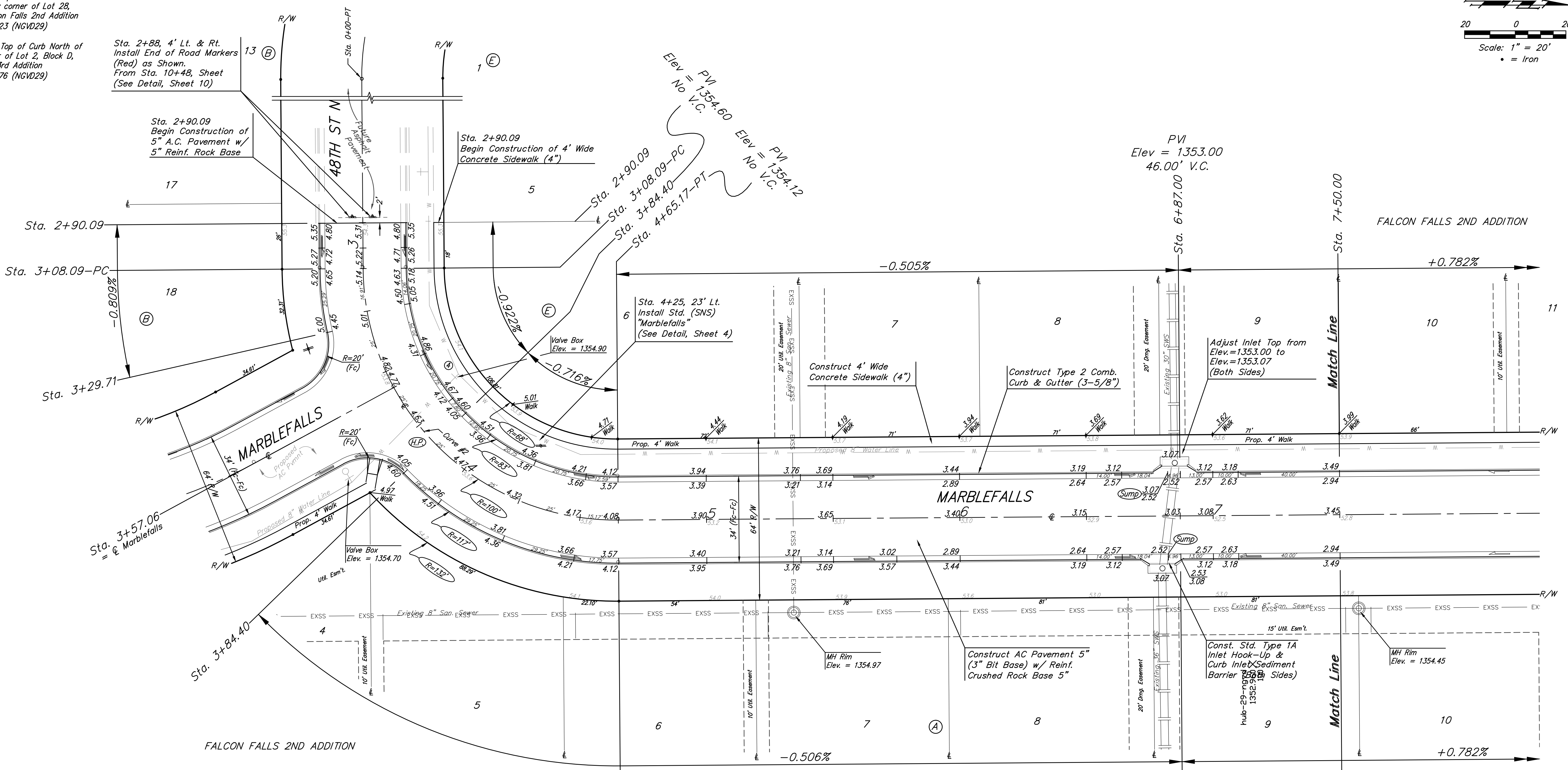
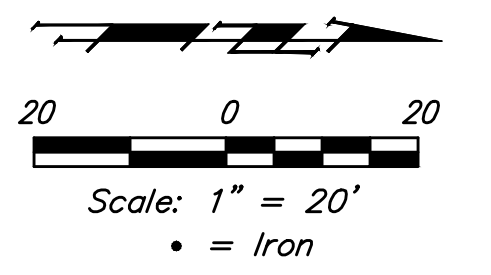


BENCHMARKS:
 BM #1: "□" Top of Curb NE of the most easterly corner of Lot 28, Block E, Falcon Falls 2nd Addition Elev. = 1361.23 (NGVD29)
 BM #2: "□" Top of Curb North of the NE corner of Lot 2, Block D, Falcon Falls 3rd Addition Elev. = 1351.76 (NGVD29)



Curve #2
 Curve Data Based on Centerline
 Rad. = 100' - Delta = 90°00'00" - Tangent = 100.00'
 Arc = 157.08' L.C. = 141.42' Def./Pt. = 17.18869 Min.

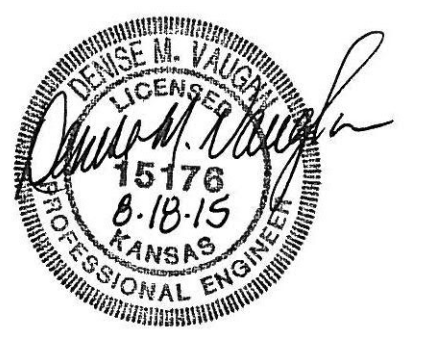
Station	Arc	Face Chord Lengths		Defl.	Total Defl.
		8' Left	8' Right		
3+08.09				0°00'00"	0°00'00"
3+25.00	16.91'	12.67'	21.11'	4°50'40"	4°50'40"
3+29.71	4.71'	3.53'	5.89'	1°20'57"	6°11'37"
3+50.00	20.29'	15.19'	25.32'	5°48'46"	12°00'23"
3+75.00	25.00'	18.70'	31.17'	7°09'43"	19°10'06"
3+84.40	9.40'	7.05'	11.75'	2°41'34"	21°51'40"
4+00.00	15.60'	11.69'	19.48'	4°28'09"	26°19'49"
4+25.00	25.00'	18.70'	31.17'	7°09'43"	33°29'32"
4+50.00	25.00'	18.70'	31.17'	7°09'43"	40°39'15"
4+65.17	15.17'	11.37'	18.94'	4°20'45"	45°00'00"

SUBDIVISION BENCH MARKS

Street & Station	Location Description	Elevation
Marblefalls 6+38.41, 17.25' Rt.	Adjacent to Fire Hydrant at NW Corner of Lot 4, Block A.	

PVI
 Elev = 1353.00
 46.00' V.C.

PVI
 Elev = 1353.00
 46.00' V.C.



Roll type curb & gutter to be constructed on the pavement on this sheet.
 Top of curb elevation are given for full height curb.

Baughman Falcon Falls 2nd Addition - Phase 3B
MARBLEFALLS
 Sta. 2+90.09 to Sta. 7+50.00

Baughman Company, P.A. 315 Ellis St. Wichita, KS 67211 P 316-262-7271 F 316-262-0149
 ENGINEERING | SURVEYING | PLANNING | LANDSCAPE ARCHITECTURE

PROJECT NUMBER: 472-85106
 REVISIONS:

DESIGN: DMV
 APPROVED: [Signature]
 DATE: 7/15

SCALE: Noted
 SHEET: 9 OF 28

E:\Projects\Falcon Falls 2nd Phase 3B\Streets_15-02-E205\Str Plans.dwg