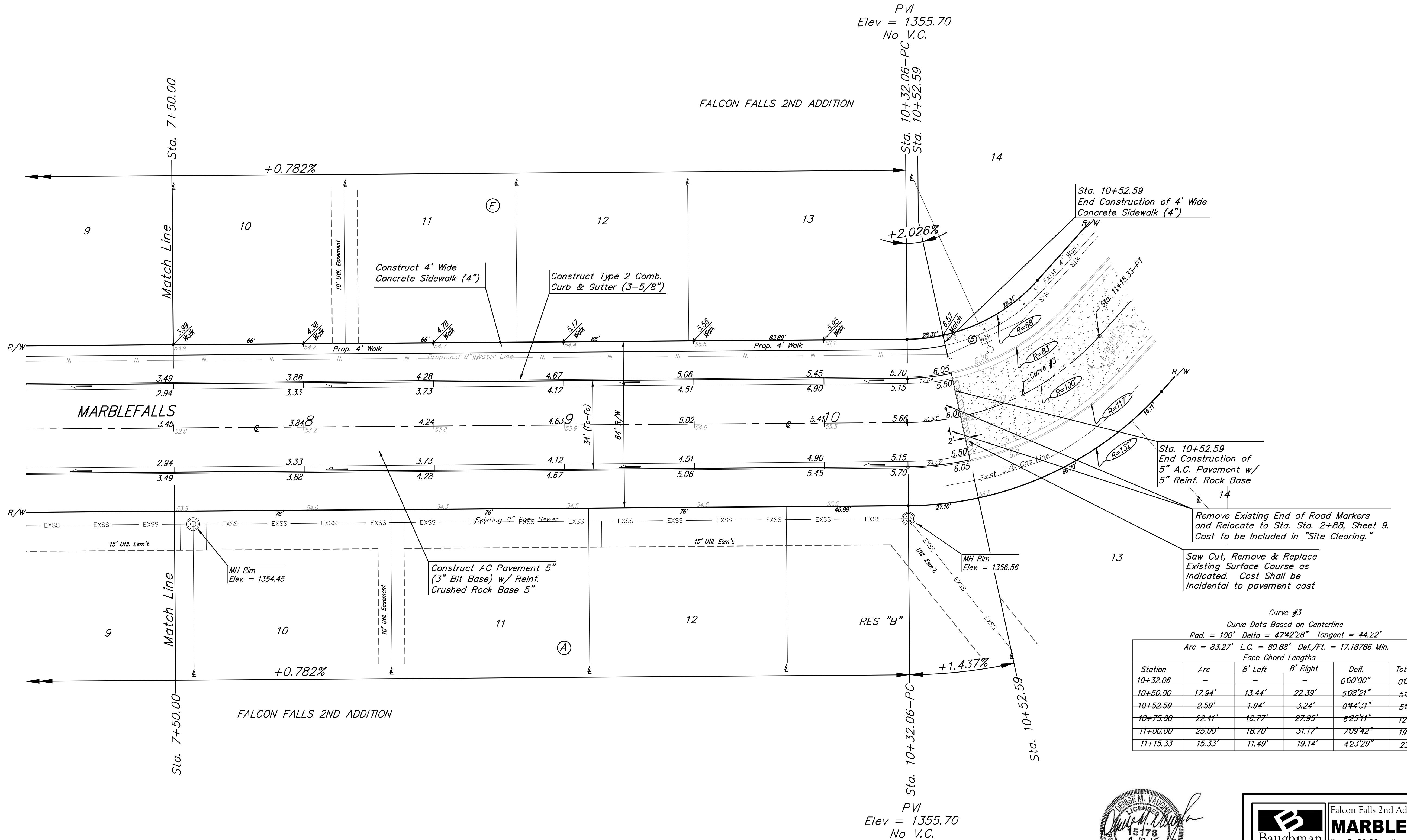
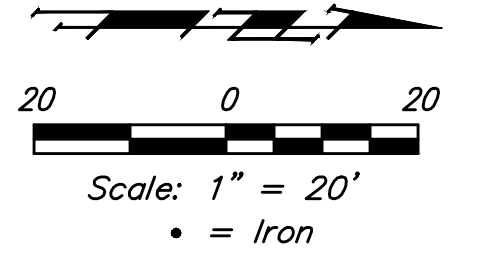


BENCHMARKS:
 BM #1: "□" Top of Curb NE of the most easterly corner of Lot 28, Block E, Falcon Falls 2nd Addition Elev. = 1361.23 (NGVD29)
 BM #2: "□" Top of Curb North of the NE corner of Lot 2, Block D, Falcon Falls 3rd Addition Elev. = 1351.76 (NGVD29)



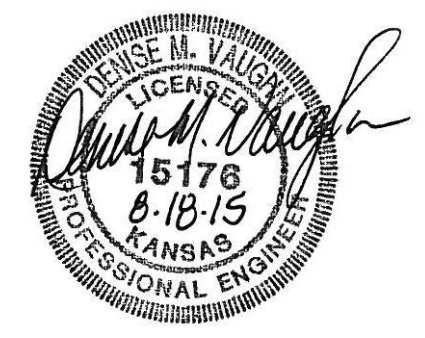
Curve #3
 Curve Data Based on Centerline
 Rad. = 100' Delta = 47°42'28" Tangent = 44.22'
 Arc = 83.27' L.C. = 80.88' Def./Pt. = 17.18786 Min.

Station	Arc	Face Chord Lengths		Defl.	Total Defl.
		8' Left	8' Right		
10+32.06	-	-	-	0°00'00"	0°00'00"
10+50.00	17.94'	13.44'	22.39'	5°08'21"	5°08'21"
10+52.59	2.59'	1.94'	3.24'	0°44'31"	5°52'52"
10+75.00	22.41'	16.77'	27.95'	6°25'11"	12°18'03"
11+00.00	25.00'	18.70'	31.17'	7°09'42"	19°27'45"
11+15.33	15.33'	11.49'	19.14'	4°23'29"	23°51'14"

VALVE LOCATION TABLE

VALVE NUMBER	BASELINE STATION	OFFSET DISTANCE	OFFSET DIRECTION
1	4+29.00	24.5'	Rt.
2	5+65.18	26.02'	Rt.
3	7+23.18	26'	Rt.
4	3+67.46	22.58'	Lt.
5	10+71.10	26'	Lt.

Roll type curb & gutter to be constructed on the pavement on this sheet.
 Top of curb elevation are given for full height curb.



Baughman Falcon Falls 2nd Addition - Phase 3B
MARBLEFALLS
 Sta. 7+50.00 to Sta. 10+52.59

Baughman Company, P.A. 315 Ellis St. Wichita, KS 67211 P 316-262-7271 F 316-262-0149
 ENGINEERING | SURVEYING | PLANNING | LANDSCAPE ARCHITECTURE

PROJECT NUMBER 472-85106	DESIGN DMV	DRAWN JAK
REVISIONS:	APPROVED	DATE 7/15
	SCALE Noted	SHEET 10 OF 28

E:\Projects\Falcon Falls 2nd Phase 3B\Streets 15-02-E205\Str Plans.dwg