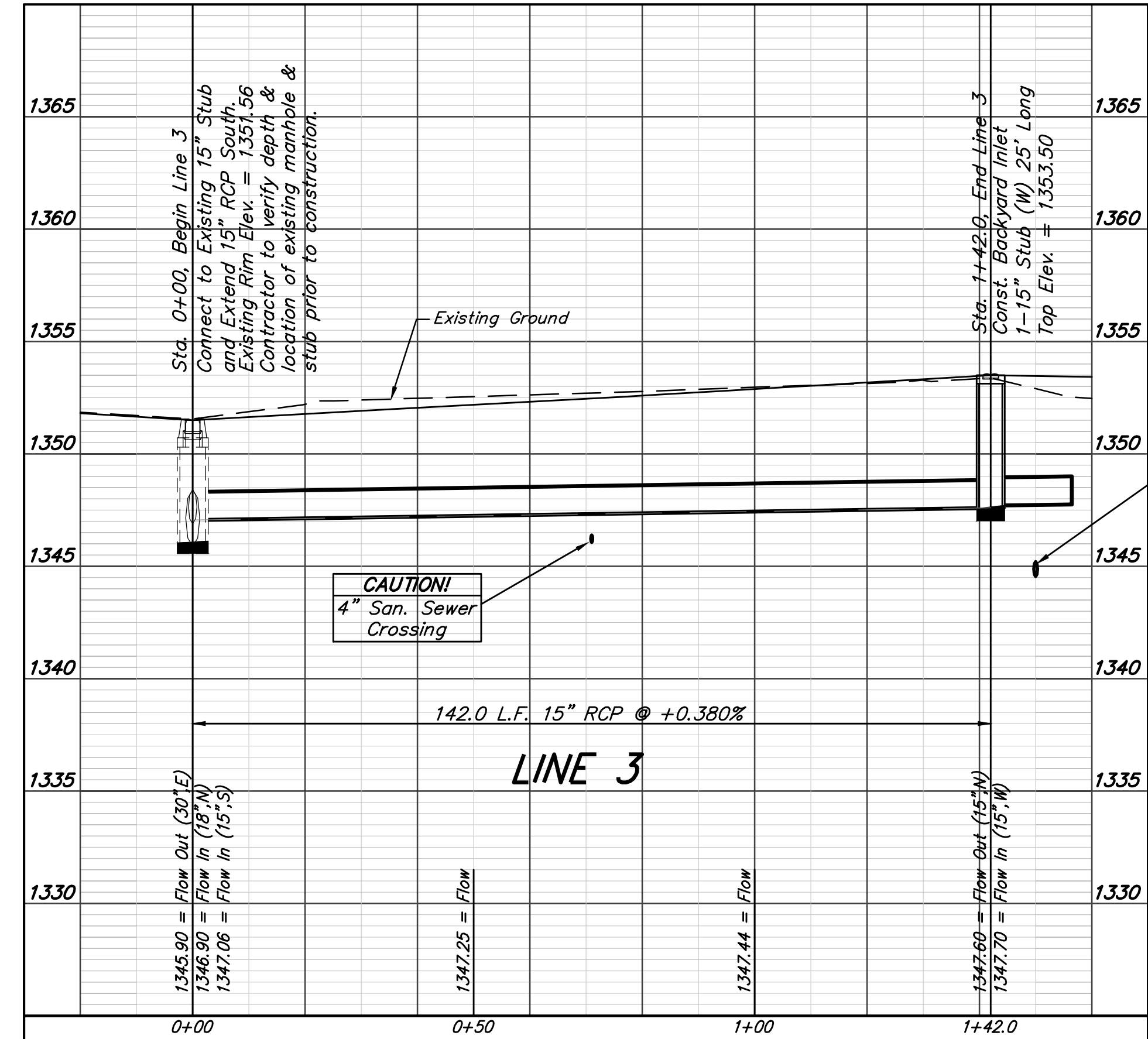
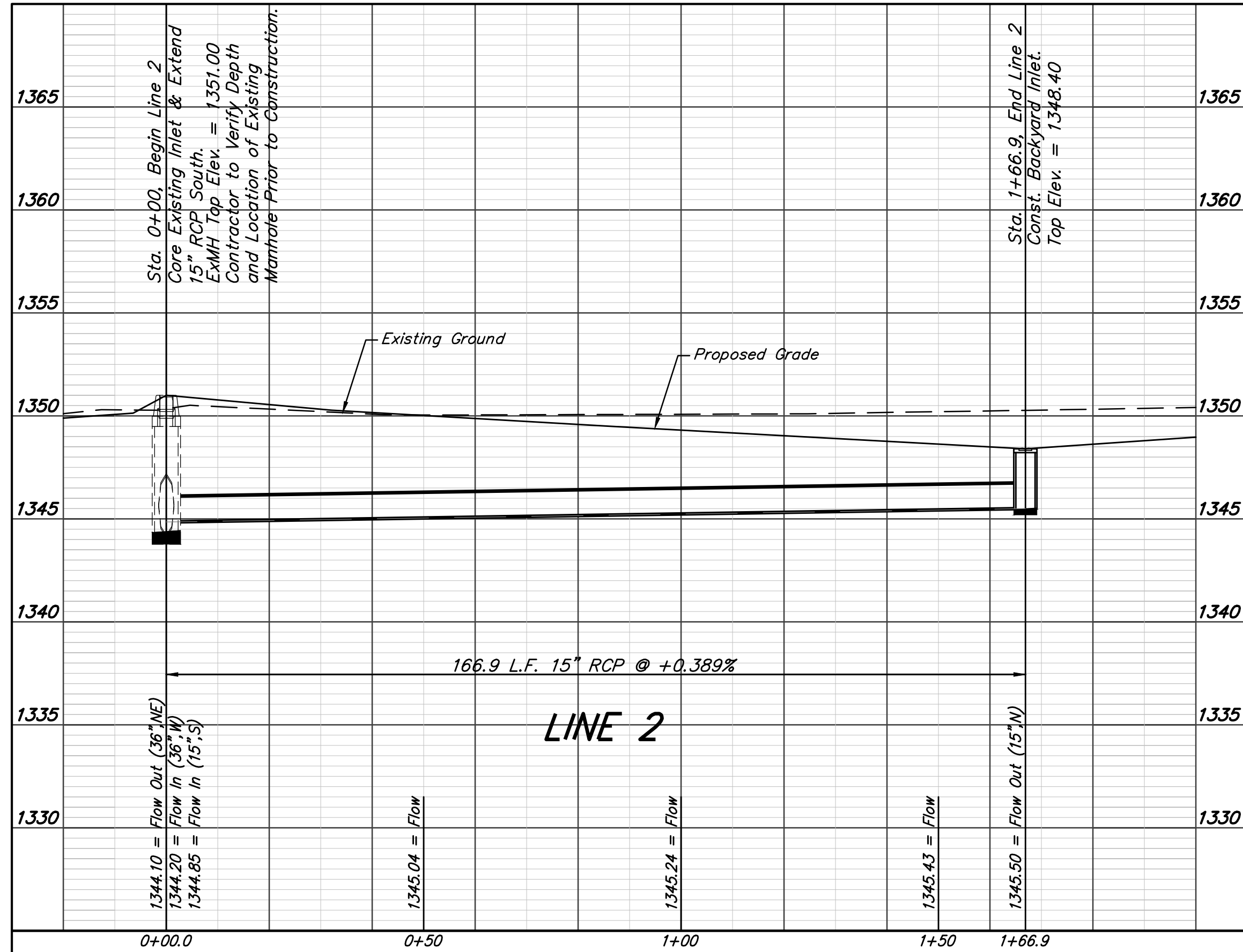
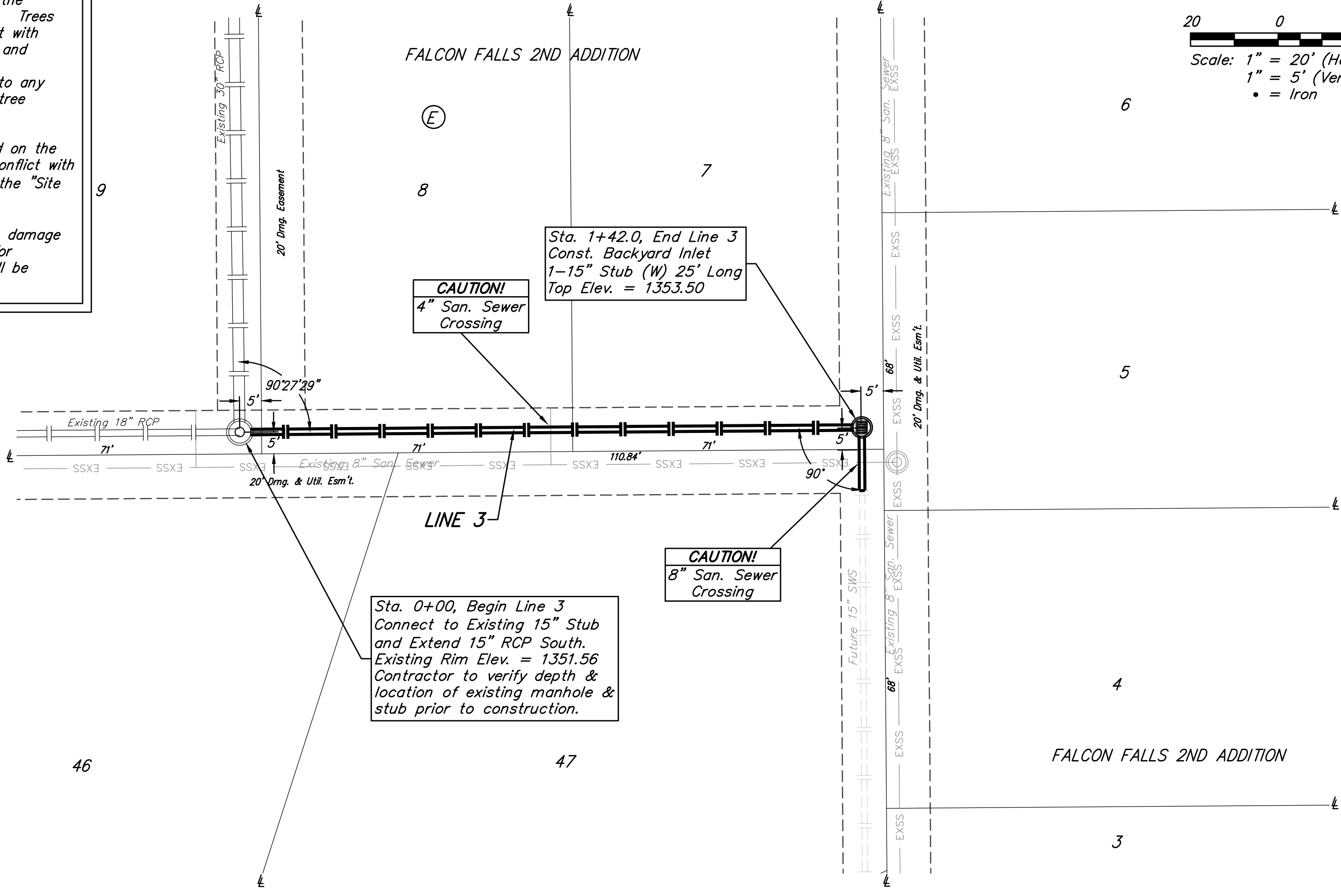
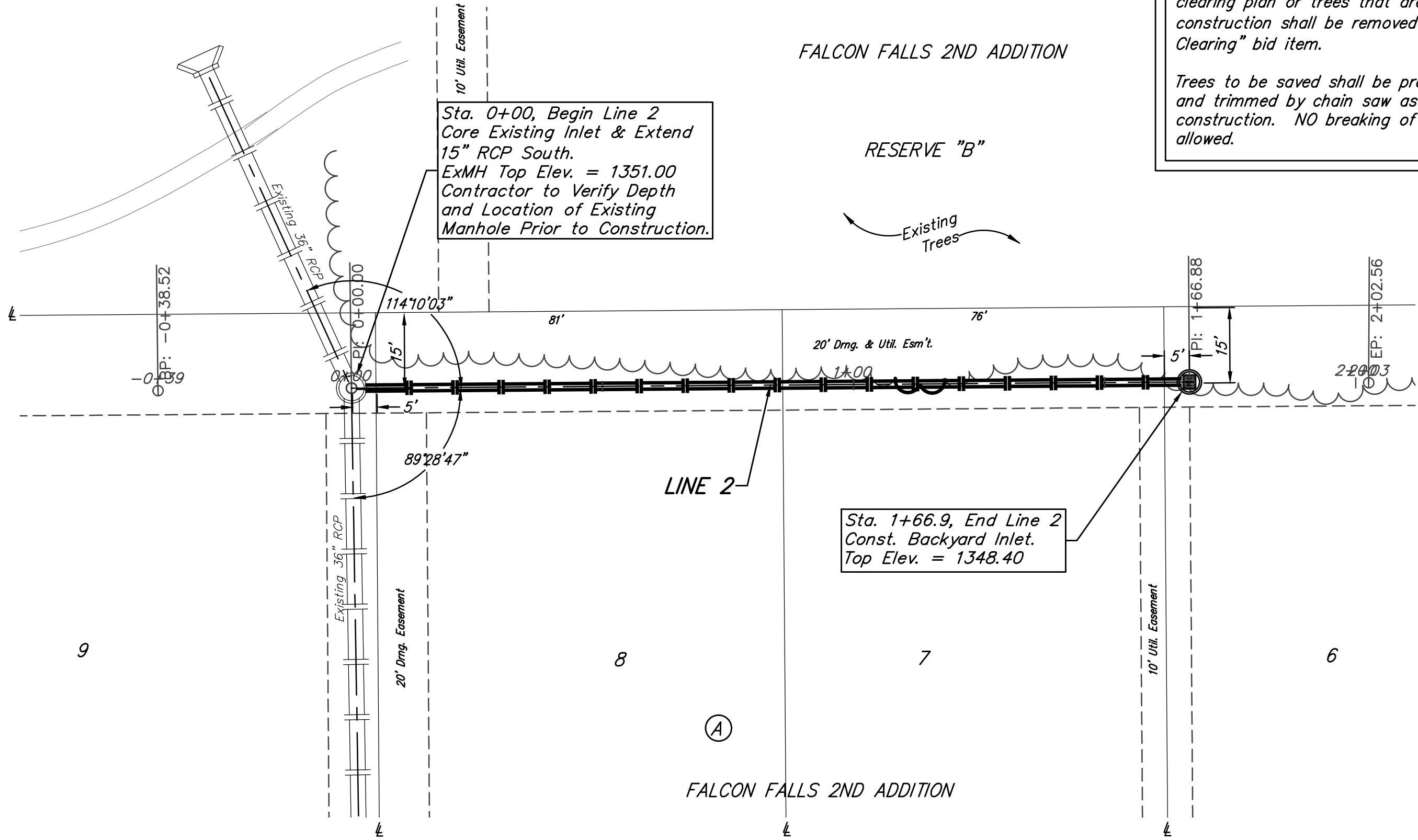
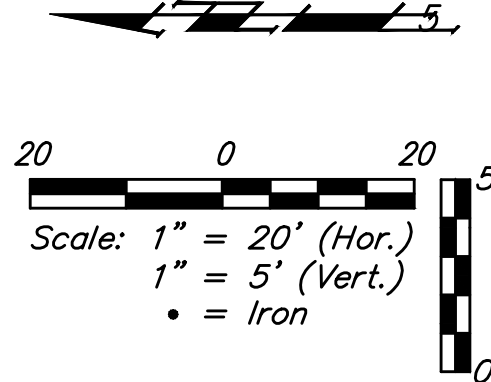


BENCHMARKS:
 BM #1: "□" Top of Curb NE of the most easterly corner of Lot 28, Block E, Falcon Falls 2nd Addition
 Elev. = 1361.23 (NGVD29)
 BM #2: "□" Top of Curb North of the NE corner of Lot 2, Block D, Falcon Falls 3rd Addition
 Elev. = 1351.76 (NGVD29)



Trees and shrubs in the work area which are in direct conflict with proposed new construction shall be removed by the Contractor **ONLY** with the Developer or Baughman Company approval. Trees and shrubs which are not in direct conflict with proposed new construction shall be saved and protected from damage. An on-site pre-construction meeting will occur prior to any construction to discuss tree removal and tree protection.
 Removal of all trees shown to be removed on the clearing plan or trees that are in direct conflict with construction shall be removed as part of the "Site Clearing" bid item.
 Trees to be saved shall be protected from damage and trimmed by chain saw as necessary for construction. NO breaking of branches will be allowed.



CAUTION!
 8" San. Sewer Crossing



Baughman Falcon Falls 2nd Addition - Phase 3B
LINE 2 & LINE 3
 Storm Water Sewer Improvements

PROJECT NUMBER: 472-85106
 REVISIONS:

DESIGN: DMV
 APPROVED: [Signature]
 SCALE: Noted
 SHEET: 12 OF 28