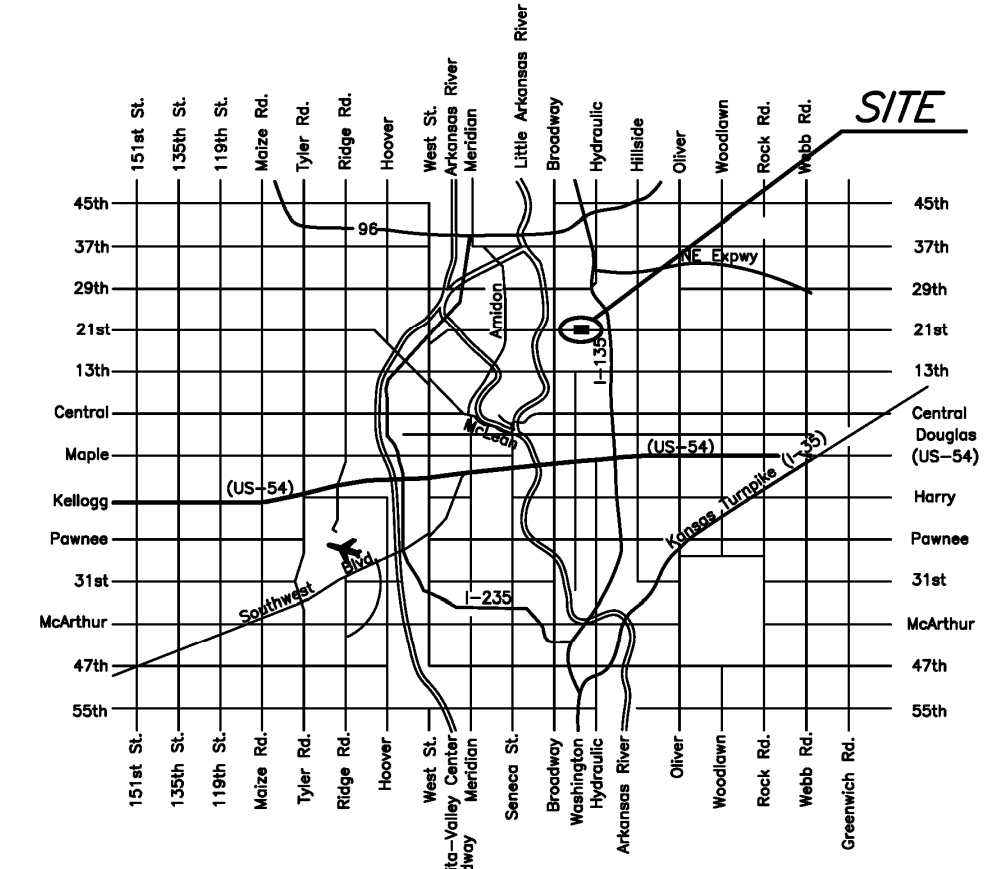


STATE	PROJECT NO.	YEAR	SHEET NO.	TOTAL SHEETS
KANSAS	87 N-0612-01	2015	1	84



F.A. NO. STP-N061(201)  
 KDOT PROJ. NO. 87 N-0612-01

- GRADING
- SURFACING
- CONCRETE PAVING
- STORM SEWER
- BRIDGE
- PAVEMENT MARKING
- SEEDING



CONSTRUCTION PLANS FOR  
**21ST STREET BRIDGE AT DERBY REFINERY**  
 WICHITA, KANSAS

©2015  
 MKEC Engineering  
 All Rights Reserved  
 www.mkec.com  
 These drawings and their contents, including, but not limited to, all concepts, designs, & ideas are the exclusive property of MKEC Engineering (MKEC), and may not be used or reproduced in any way without the express consent of MKEC.

**TITLE SHEET**

PROJECT NO.	472-85120	
DATE	JULY 2015	
SCALE	1" = 40'	
DESIGNED	DRAWN	CHECKED
JRA	JSB	JRA

NO.	REVISION	DATE

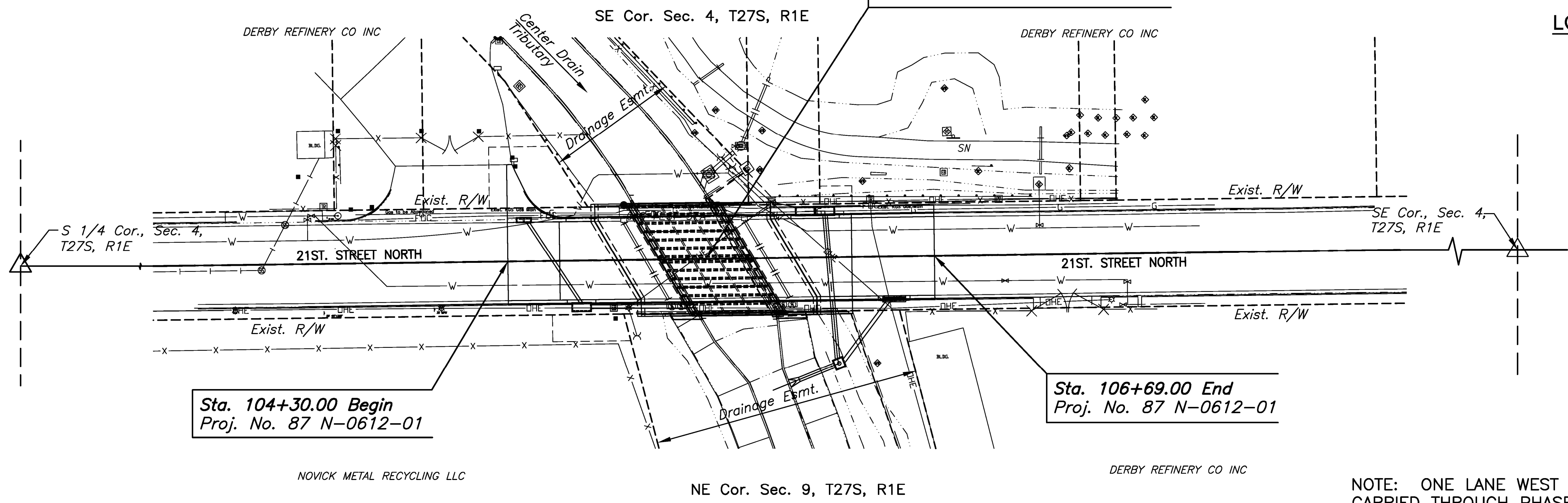
SHEET NO.  
 1 OF 84

# STATE OF KANSAS DEPARTMENT OF TRANSPORTATION PLAN AND PROFILE OF PROPOSED 21ST STREET BRIDGE AT DERBY REFINERY

**FEDERAL AID PROJECT**  
 CITY OF WICHITA BRIDGE PROJECT NO. 472-85120  
 BRIDGE O.C.A. NO. 715732  
 CITY OF WICHITA WATER LINE PROJECT NO. 448-90656  
 WATER LINE O.C.A. NO. 636310

**SEDGWICK COUNTY  
 CITY OF WICHITA**

Sta. 105+40.90 Const.  
 Br. No. 430400876500035  
 49'-3" Weathering Steel Welded  
 Plate Girder, Composite Span (SWCS)  
 47'-6" Roadway, 30' Skew Lt.  
 6'-4" Walkway Lt. & Rt.  
 See Sh. No.



**INDEX TO DRAWINGS**

SHEET NO.	DESCRIPTION
1	TITLE SHEET
2	GENERAL NOTES
3	TYPICAL SECTIONS
4	IMPROVEMENT PLAN SHEET
5-13	PAVING DETAILS
14	STORM SEWER PLAN AND PROFILE
15-23	STORM SEWER DETAILS
24-25	EXCAVATION PLANS
26	CHANNEL REPLACEMENT DETAILS
27	WATER LINE TITLE SHEET
28-30	WATER LINE PLANS
31	BUBBLE MAP
32	GAS LINE INSTALLATION DETAILS
33-34	GENERAL NOTES AND QUANTITIES
35-36	BRIDGE PLANS
37-38	EXISTING BRIDGE DEMOLITION PLAN
39-45	PHASE 1 BRIDGE DETAILS
46-52	PHASE 2 BRIDGE DETAILS
53-57	BRIDGE DETAILS
58	SUMMARY AND RECAPITULATION OF QUANTITIES
59-64	EROSION CONTROL PLANS
65	ROADSIDE IMPROVEMENT PLAN
66	PAVEMENT MARKING AND SIGNING
67	DETECTOR LOOP DETAILS
68	CONSTRUCTION SEQUENCE SUMMARY
69-81	TRAFFIC CONTROL PLANS
82	PROJECT DRAINAGE MAP
83-84	CROSS SECTIONS

**DESIGN DESIGNATION**

AADT (2011)	= 12,486
AADT (2031)	= 15,235
DHV	= 10%
D	= 60%
T	= 3%
V	= 35 MPH
C of A	= None
Lateral Offset	= 4 Ft.

**CONVENTIONAL SIGNS**

COUNTY LINE	_____	CENTER LINE OF PROJECT	_____
CITY LIMITS	_____	TERRACE	_____
STATE OR NATIONAL LINE	_____	CULVERTS	_____
TOWNSHIP, SECTION or GRANT LINE	_____	DROP INLET & STORM SEWER	_____
PROPERTY LINE	_____	ACCESS CONTROL	_____
HIGHWAY FENCE	_____	POWER POLE	_____
EXISTING FENCE	_____	TELEPHONE POLE	_____
GUARDRAIL	_____	MARSH	_____
CONSTRUCTION LIMITS	_____	HEDGE	_____
RIGHT OF WAY LINE	_____	TREES	_____
TRAVELED WAY	_____	PROFILE ELEVATION	_____
RAILROADS	_____	STREAM or CREEK	_____

GROSS LENGTH OF PROJECT	239.00	FT.
EXCEPTIONS	0.00	FT.
ADDITIONS	0.00	FT.
NET LENGTH OF PROJECT	239.00	FT. 0.045 MILES
NET LENGTH OF BRIDGES	52.14	FT. 0.010 MILES
NET LENGTH OF ROAD	186.86	FT. 0.035 MILES

NOTE: ONE LANE WEST BOUND TRAFFIC TO BE CARRIED THROUGH PHASE 1 AND PHASE 2 CONSTRUCTION. LOCAL TRAFFIC WILL BE PERMITTED TO ADJACENT PROPERTIES.

NOTE: THE PIPES ON THIS PROJECT ARE IN ACCORDANCE WITH THE CURRENT KDOT PIPE POLICY.



APPROVED - DATE  
 Gary Janzen 07/28/15  
 GARY JANZEN, P.E.  
 CITY ENGINEER

J:\PROJECTS\2015\1301040648\_21ST BRIDGE AT DERBY REFINERY\CIVIL\LOADING\PAVING\846101.DWG  
 PLOTTED Wednesday, July 29, 2015 @ 9:55AM