

STATE	PROJECT NO.	YEAR	SHEET NO.	TOTAL SHEETS
KANSAS	87 N-0612-01	2015	4	84



CONSTRUCTION PLANS FOR
21ST STREET BRIDGE AT DERBY REFINERY
 WICHITA, KANSAS

- Control Point #3**
- 5/8" rebar with red "MKEC Control Point" cap
 - Sta. 103+60.73, 44.55' Lt.
N = 1699231.56 E = 1652305.59 3
 - North curb of 21st Street 20.0' S.
 - West edge of 1st drive west of bridge 4.7' E.

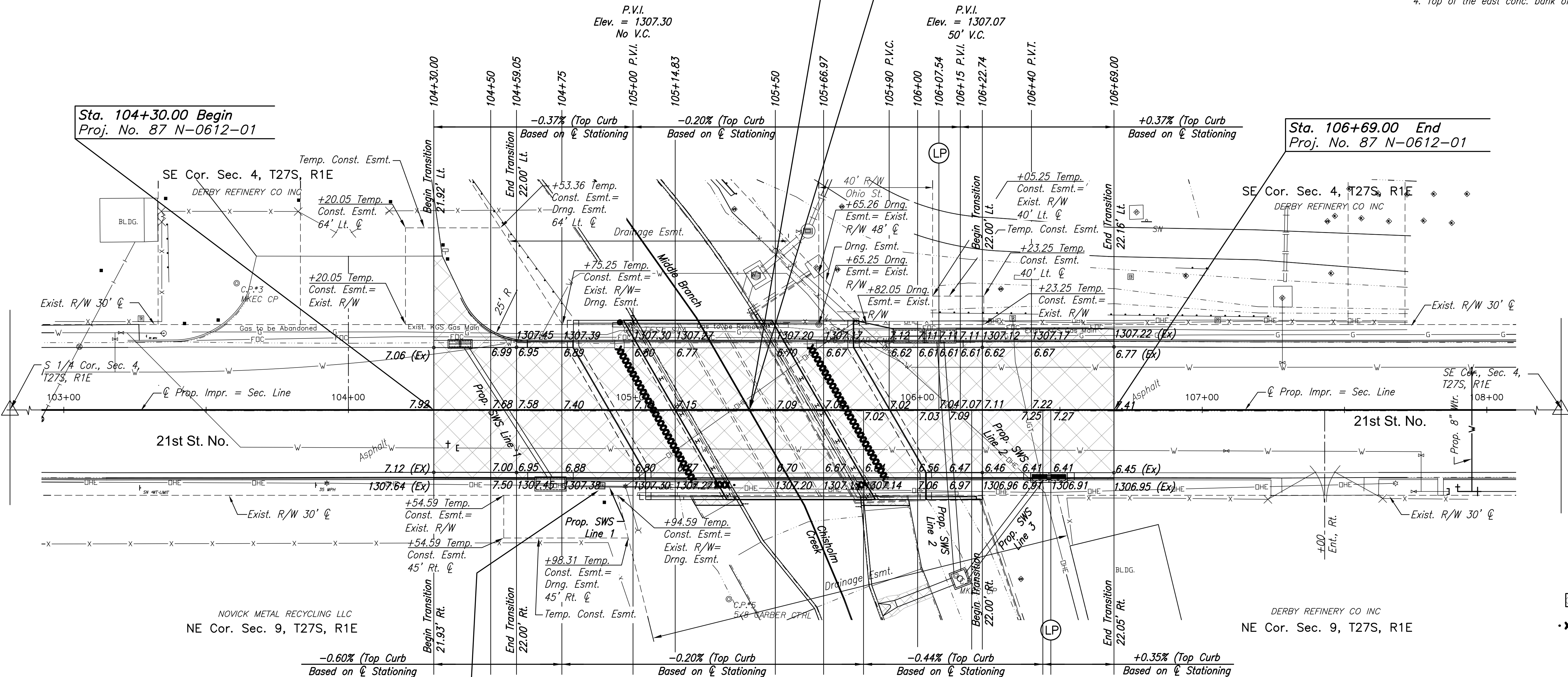
- Control Point #5**
- 5/8" rebar with Garber Control Point cap
 - Sta. 105+33.66, 66.49' Rt.
N = 1699122.83 E = 1652479.97
 - South curb of 21st Street 42.0' N.
 - Top of west conc. bank of drainage channel 6.0' E.

Sta. 105+40.90 Const.
 Br. No. 430400876500035
 49"-3" Weathering Steel Welded
 Plate Girder, Composite Span (SWCS)
 47'-6" Roadway, 30° Skew Lt.
 6'-4" Walkway Lt. & Rt.
 See Sh. No.

Sta. 105+40.90 Remove
 Br. No. 430400876500030
 3-12"x8"x70'-3" RFB
 47'-6" Roadway, 30° Skew Lt.

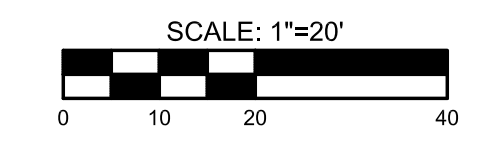
- Control Point #4**
- Found 5/8" rebar at southeast corner of Lot 1, Myers and Toler's Out Lots Addition
 - Sta. 105+65.25, 30.01' Lt.
N = 1699219.73 E = 1652510.28
 - North edge of sidewalk on N. side 21st St. 1.9' S.
 - East end of headwall of RCB 10.8' W.

- Control Point #1**
- 5/8" rebar with red "MKEC Control Point" cap
 - Sta. 106+13.49, 58.22' Rt.
N = 1699132.15 E = 1652559.68
 - South curb of 21st Street 34.0' N
 - Top of the east conc. bank of drainage channel 10.0' W

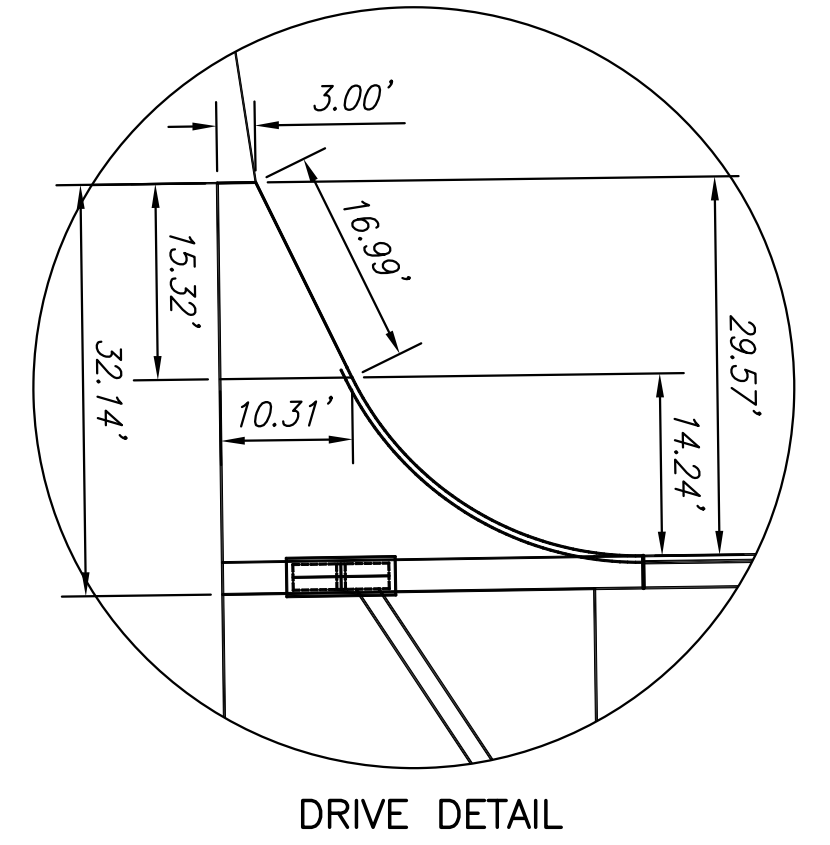


Sta. 104+30.00 Begin
 Proj. No. 87 N-0612-01

Sta. 106+69.00 End
 Proj. No. 87 N-0612-01



- LEGEND**
- Pavement Removal
 - Storm Sewer Removal



Traffic counter to be relocated by others. Contractor to install junction box and detector loops. Contractor to remove existing concrete slab/footing. See sheet 64

BM#1 City of Wichita benchmark disk in top of concrete bridge rail at westernmost corner of RCB north of project bridge
 Sta. 104+00.07, 147.19' Lt. Elev. = 1312.85 (NAVD 88)

REMOVAL OF EXISTING STRUCTURE: The Contractor shall remove the existing concrete RFB and wings. All materials shall become the property of the Contractor and shall be removed from the project site by the Contractor.

- Control Point #6**
- 3/4" pipe in thimble
 - Sta. 100+30.00, 0.00' Lt.
N = 1699182.64 E = 1651975.47
 - Witness monument of S 1/4 Cor. Sec 4, T27S, R1E 30.0' W.
 - Center of east rail of east set of tracks 27.3' W.

- SE Cor. Sec 4, T27S, R1E**
- 1/2" rebar with MKEC CLS #39 cap
 - Sta. 126+39.46, 0.00' Lt.
N = 1699217.16 E = 1654584.71
 - Chiseled "X" on top of south curb of 21st Street 50.86' S.
 - Center of entrance ramp for northbound I-135 100.2' E.

©2015 MKEC Engineering All Rights Reserved
 These drawings and their contents, including, but not limited to, all concepts, designs, & ideas are the exclusive property of MKEC Engineering (MKEC), and may not be used or reproduced in any way without the express consent of MKEC.

IMPROVEMENT PLAN SHEET

PROJECT NO.	472-85120	
DATE	JULY 2015	
SCALE	1"=30'	
DESIGNED	DRAWN	CHECKED
JRA	JSB	JRA
NO.	REVISION	DATE
SHEET NO.		
4 OF 84		