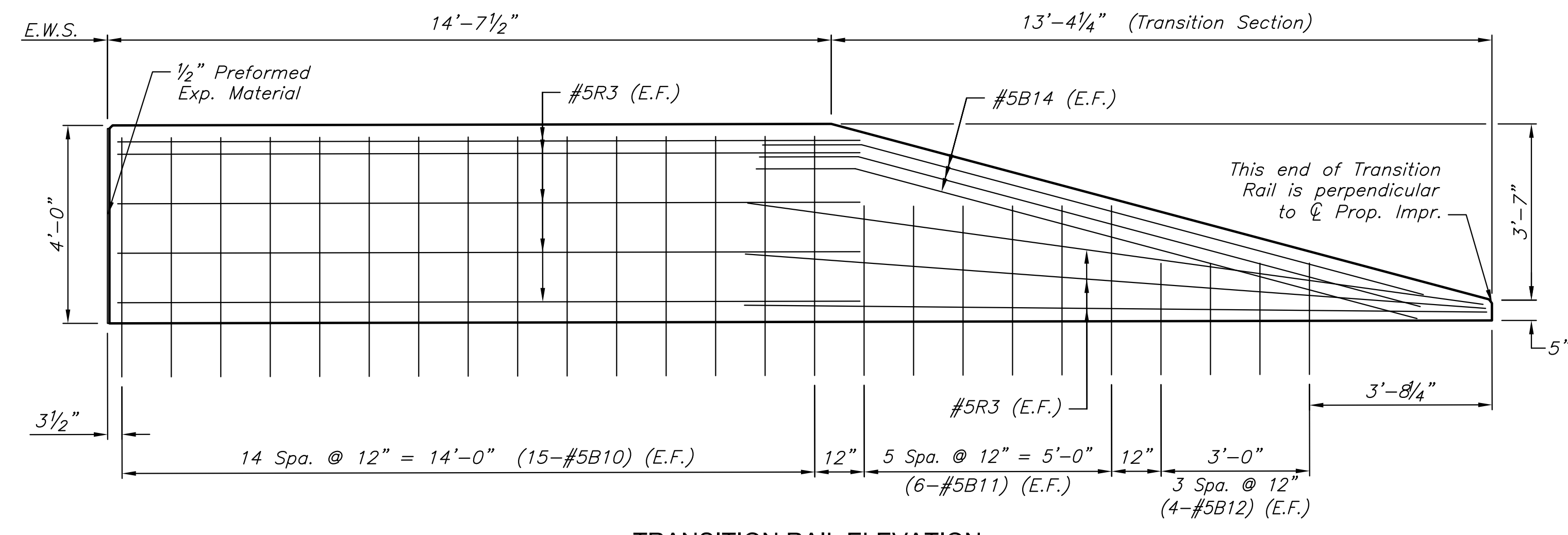


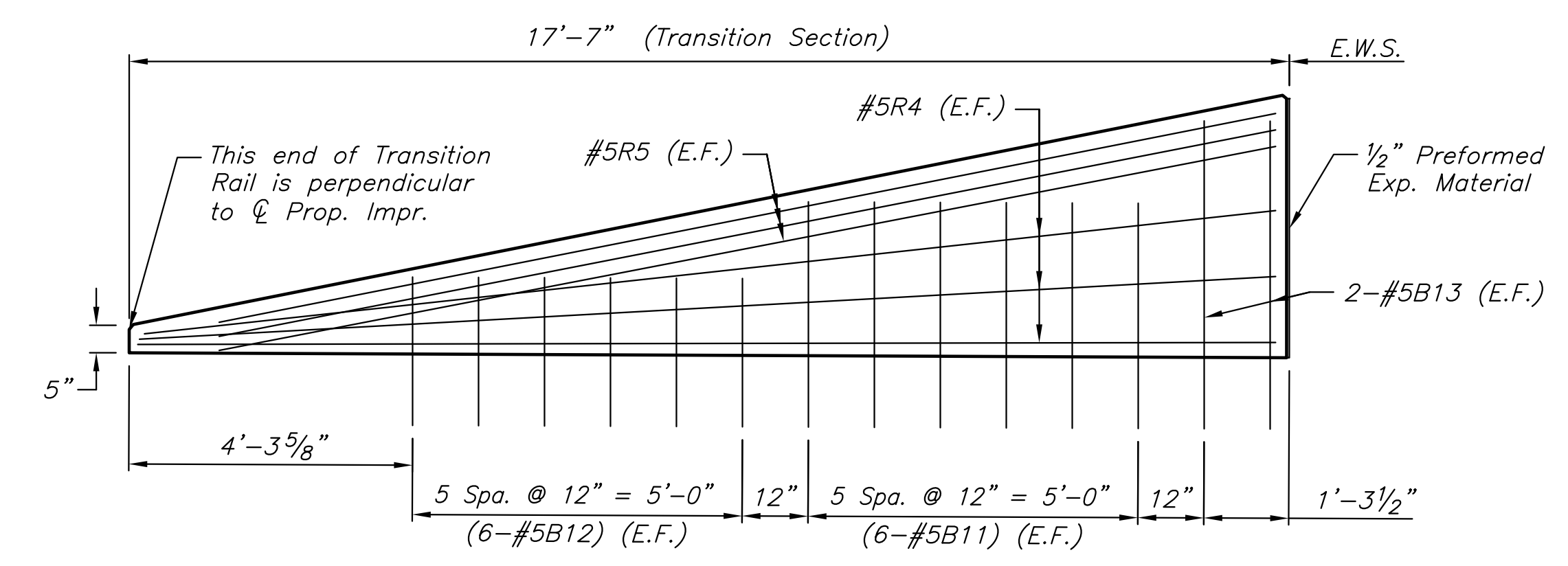
STATE	PROJECT NO.	YEAR	SHEET NO.	TOTAL SHEETS
KANSAS	87 N-0612-01	2015	8	84



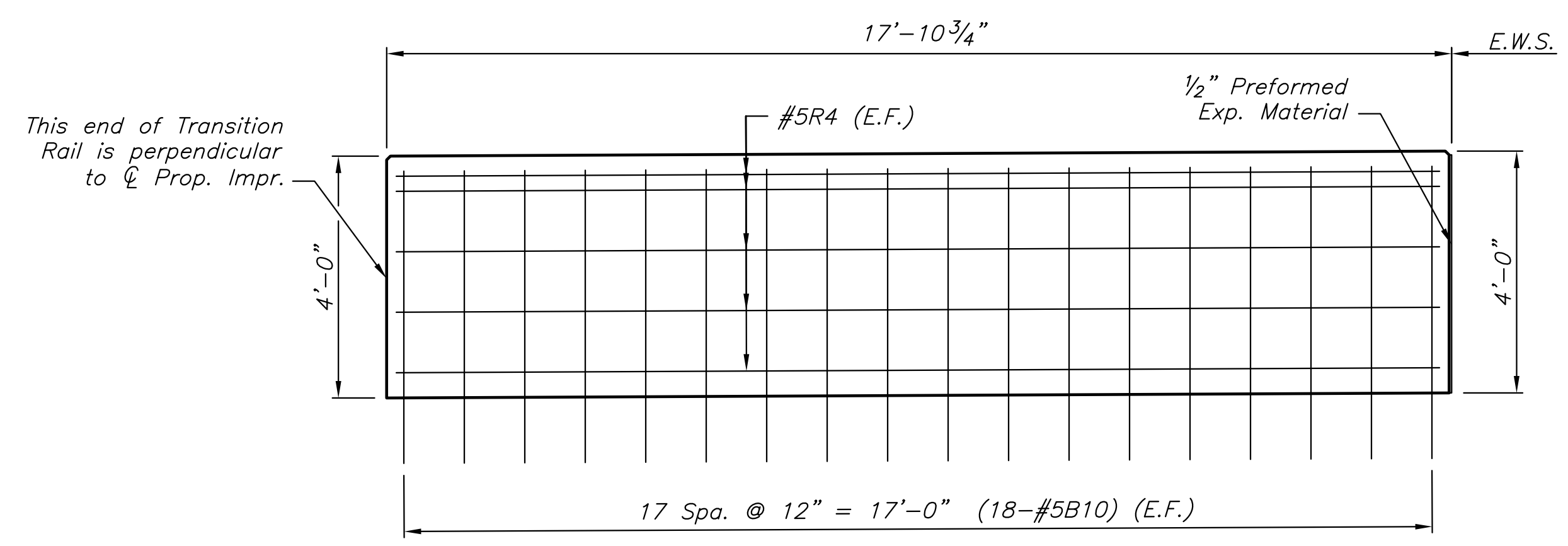
CONSTRUCTION PLANS FOR
21ST STREET BRIDGE AT DERBY REFINERY
 WICHITA, KANSAS



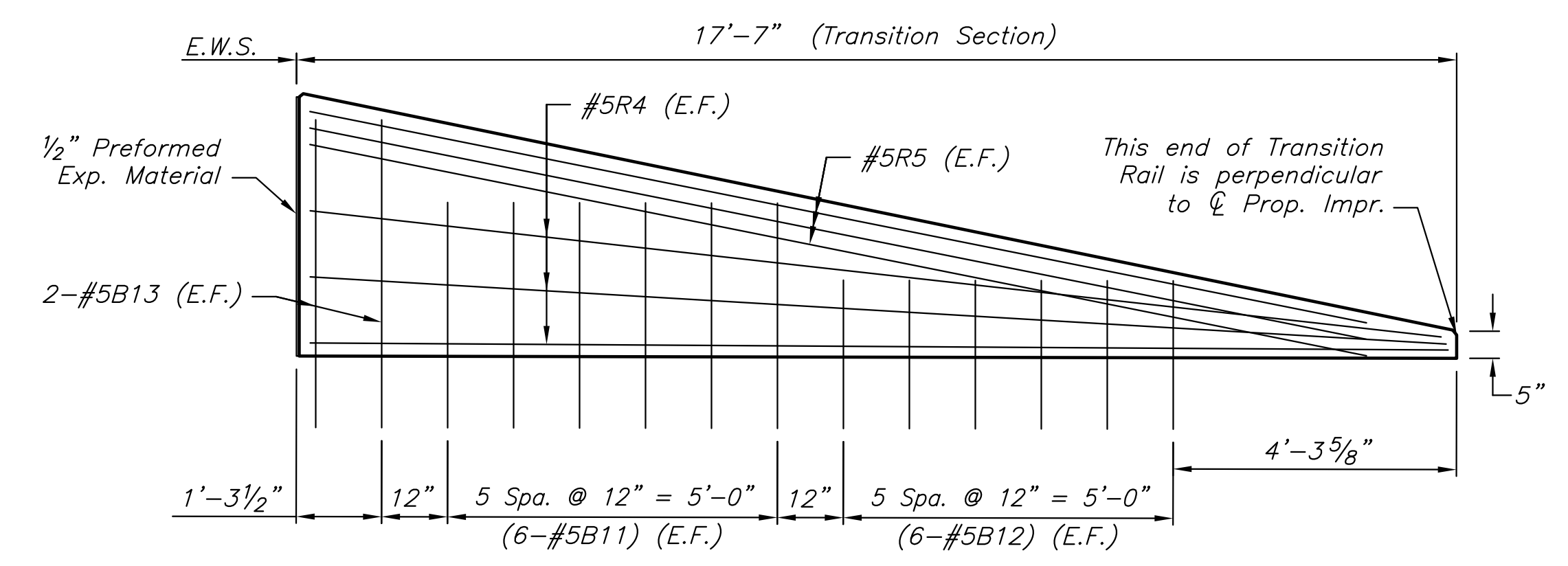
TRANSITION RAIL ELEVATION
(PHASE 1 WEST APPROACH SIDEWALK SLAB)
 (Looking South at North Face of Rail)



TRANSITION RAIL ELEVATION
(PHASE 2 WEST APPROACH SIDEWALK SLAB)
 (Looking North at South Face of Rail)

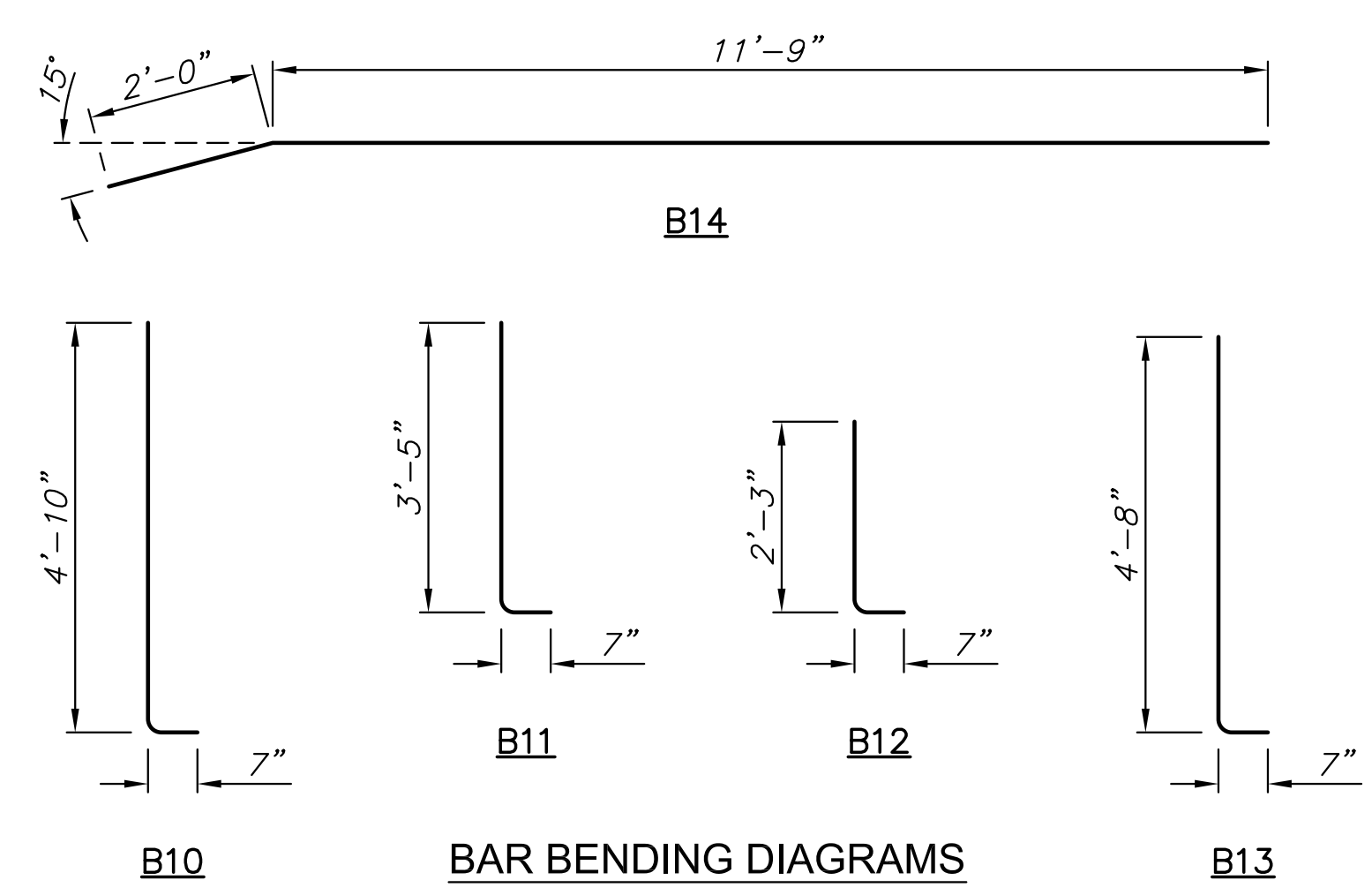


TRANSITION RAIL ELEVATION
(PHASE 1 EAST APPROACH SIDEWALK SLAB)
 (Looking South at North Face of Rail)

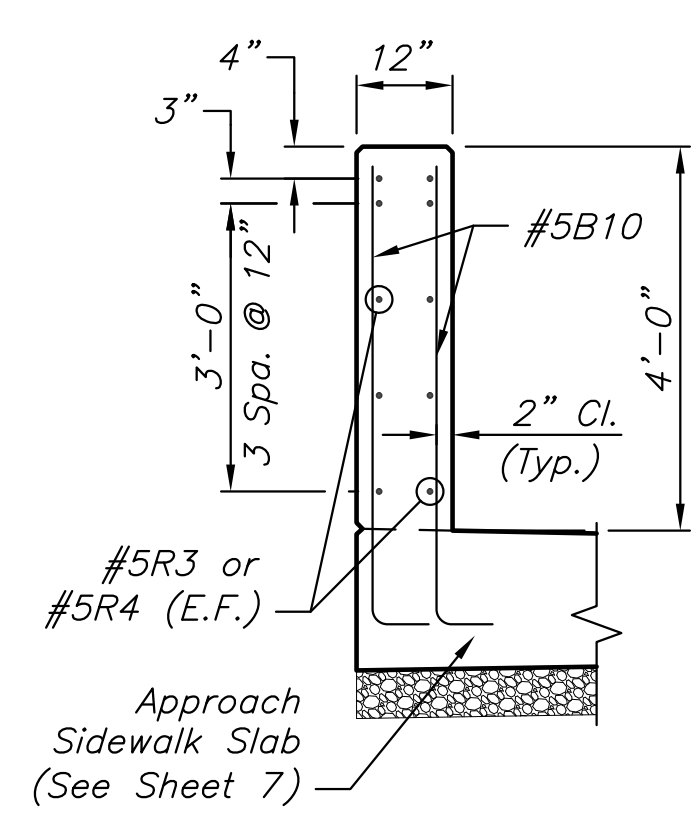


TRANSITION RAIL ELEVATION
(PHASE 2 EAST APPROACH SIDEWALK SLAB)
 (Looking North at South Face of Rail)

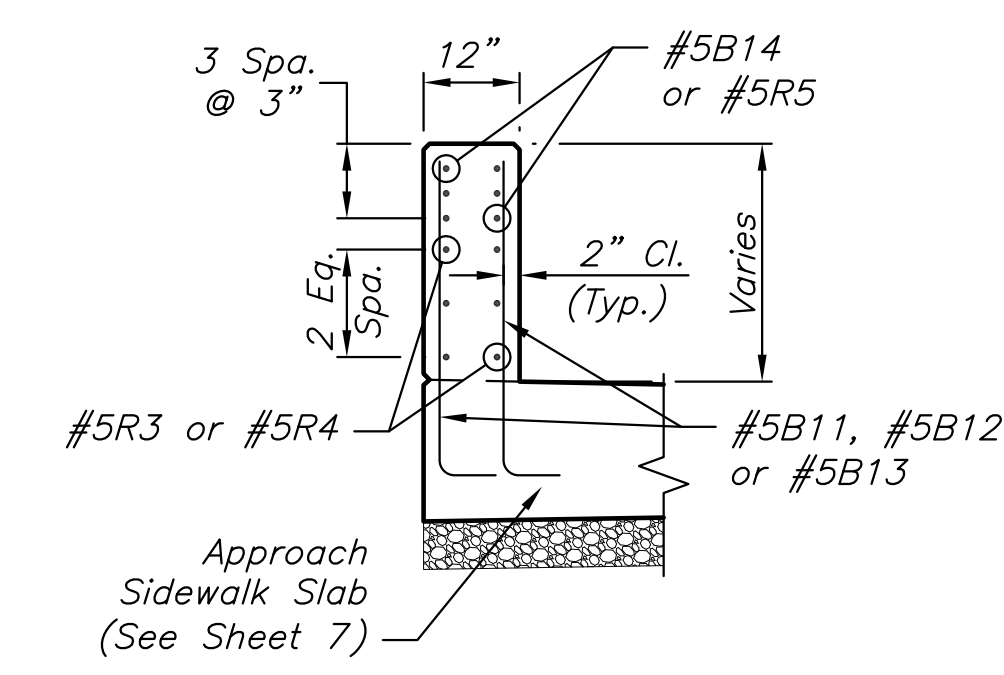
- NOTES:**
- Refer to General Notes on Sheet 7.
 - Transition Rail ends are parallel to the skew at the Bridge E.W.S. and perpendicular to ϕ Prop. Impr. at the opposite end.
 - Length dimensions shown represent the shortest face of the transition rail.
 - Bevel all exposed edges of rail with a 3/4" triangular molding.



BAR BENDING DIAGRAMS
 All dimensions are out to out of bars.



TYPICAL SECTION
 Through Uniform Height Rail
 (Phase 1 Looking Back Station)
 (Phase 2 Looking Forward Station)



TYPICAL SECTION
 Through Transition Section
 (Phase 1 Looking Back Station)
 (Phase 2 Looking Forward Station)

BILL OF REINFORCING STEEL (All Approach Transition Rails) (For Information Only)				
Epoxy Coated, Grade 60				
Δ See Bending Diagram				
Bar	Δ B10	Δ B11	Δ B12	Δ B13
No.	66	36	32	8
Size	#5	#5	#5	#5
Length	5'-5"	4'-0"	2'-10"	5'-3"
Bar	Δ B14	R3	R4	R5
No.	6	16	22	12
Size	#5	#5	#5	#5
Length	13'-9"	15'-0"	17'-3"	16'-4"

©2013 MKEC Engineering All Rights Reserved www.mkec.com
 These drawings and their contents, including, but not limited to, all concepts, designs, & ideas are the exclusive property of MKEC Engineering (MKEC), and may not be used or reproduced in any way without the express consent of MKEC.

APPROACH SIDEWALK SLAB RAIL DETAILS	
PROJECT NO.	472-85120
DATE	JULY 2015
SCALE	NO SCALE
DESIGNED	DRAWN
KJS	DMU
CHECKED	KJS
NO.	REVISION
	DATE
SHEET NO.	
8 OF 84	

PLOTTED: Tuesday, July 21, 2015 @ 10:15 AM

J:\PROJECTS\2013\1301040546_21ST BRIDGE AT DERBY REFINERY\CIVIL\CAD\PAV1\3548ED04.DWG