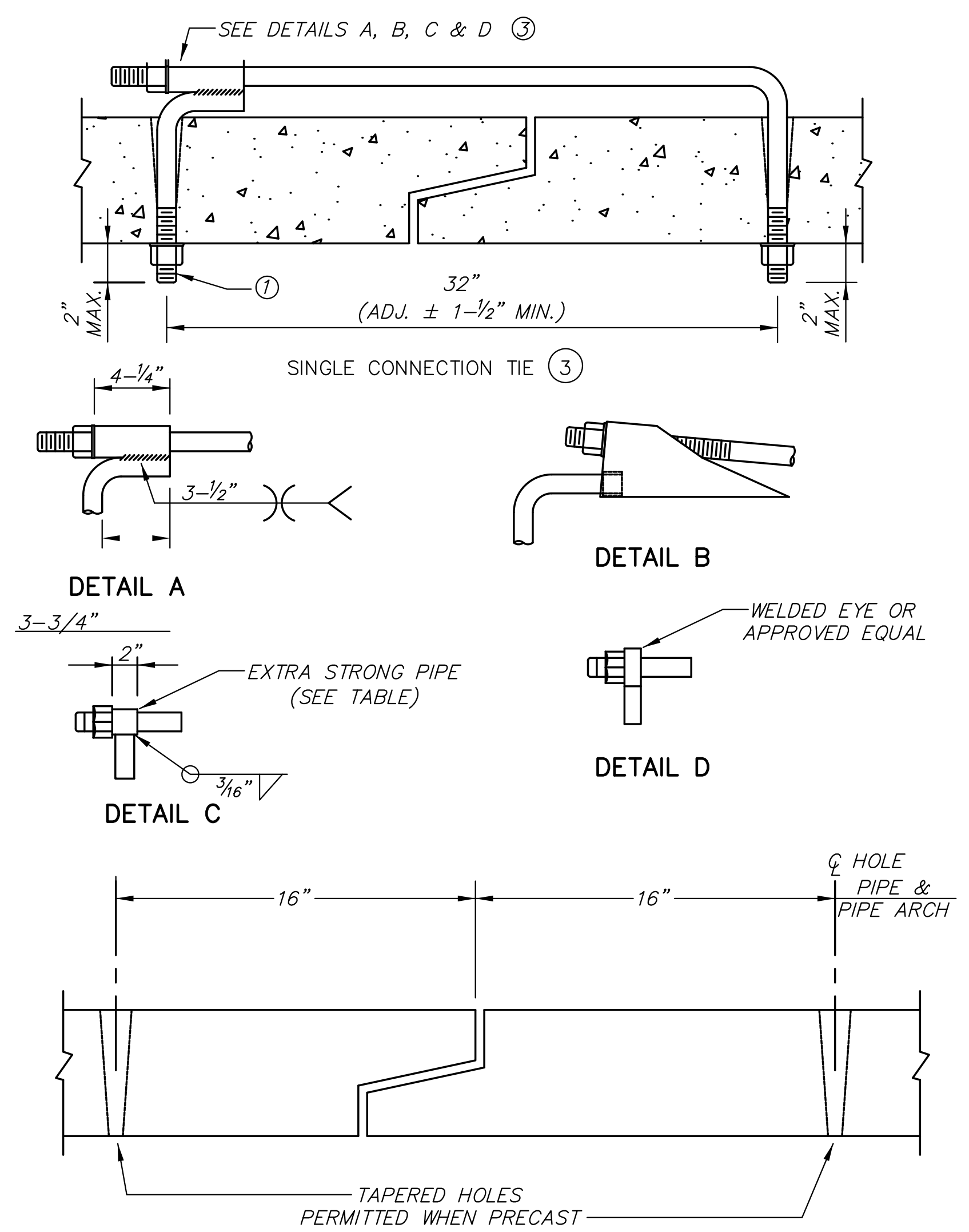
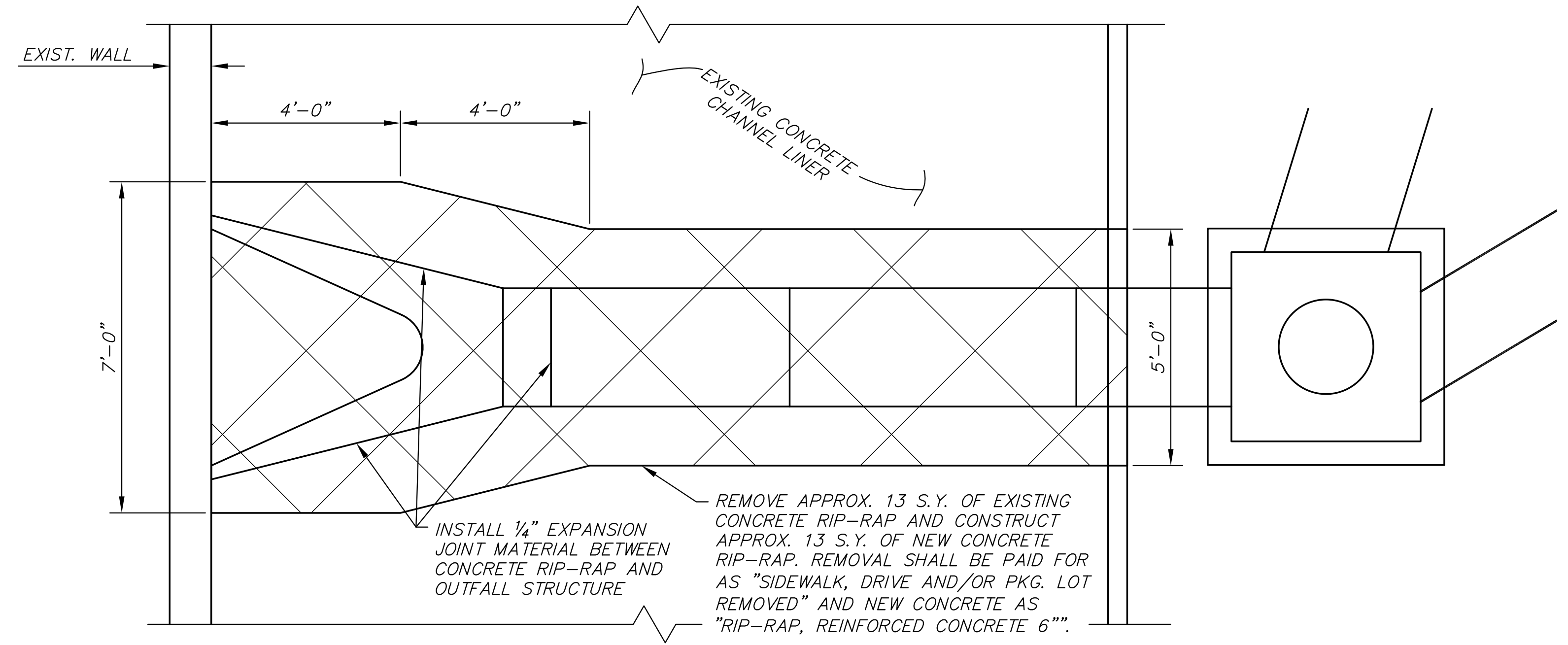
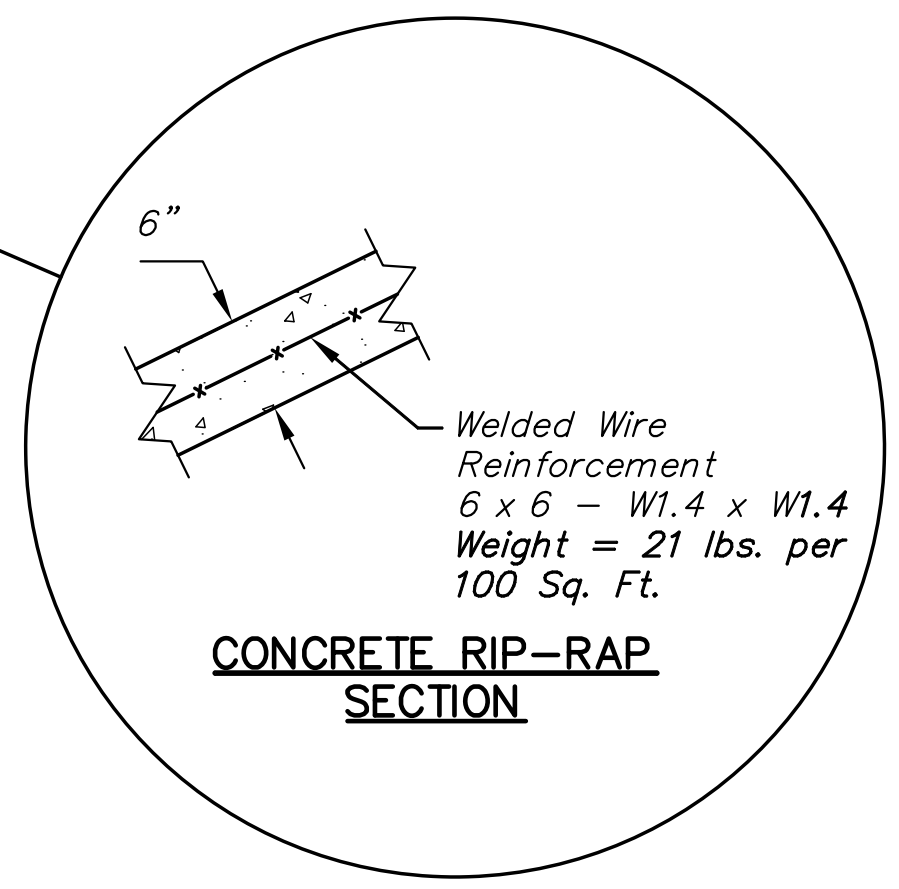
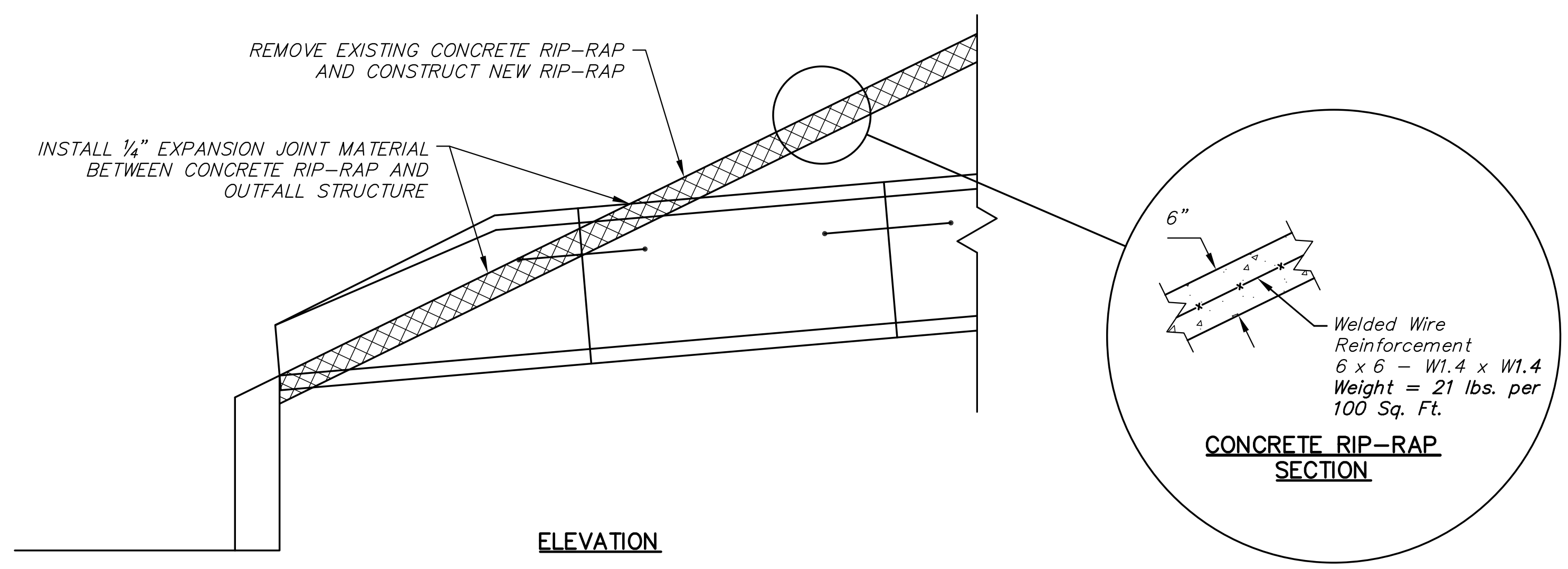


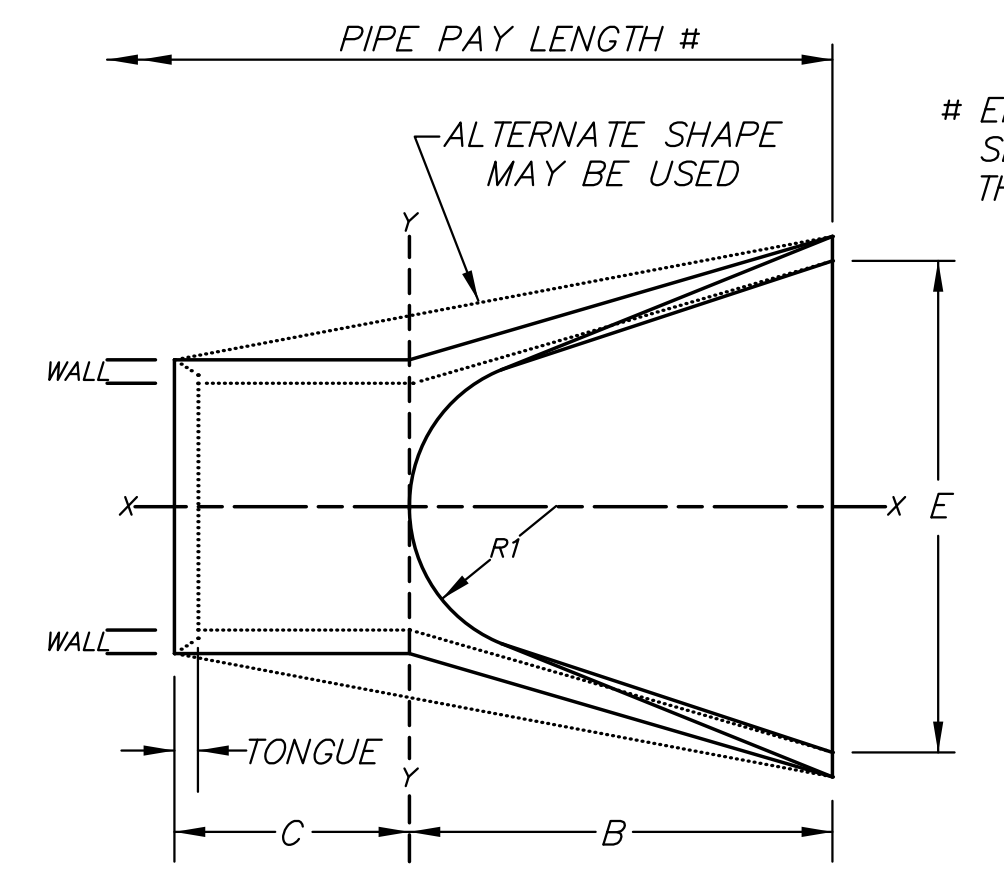
STATE	PROJECT NO.	YEAR	SHEET NO.	TOTAL SHEETS
KANSAS	87 N-0612-01	2015	20	84



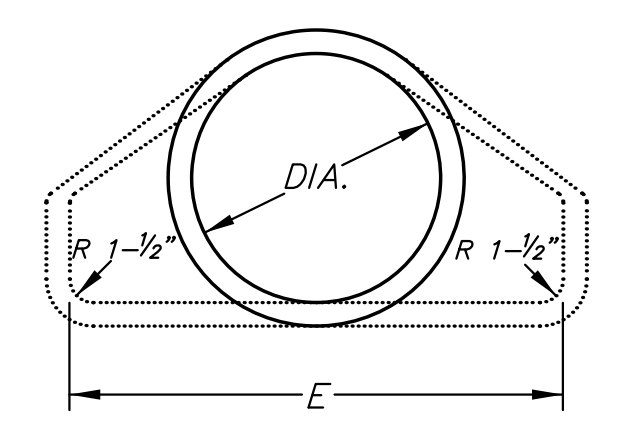
CONSTRUCTION PLANS FOR  
**21ST STREET BRIDGE AT DERBY REFINERY**  
 WICHITA, KANSAS



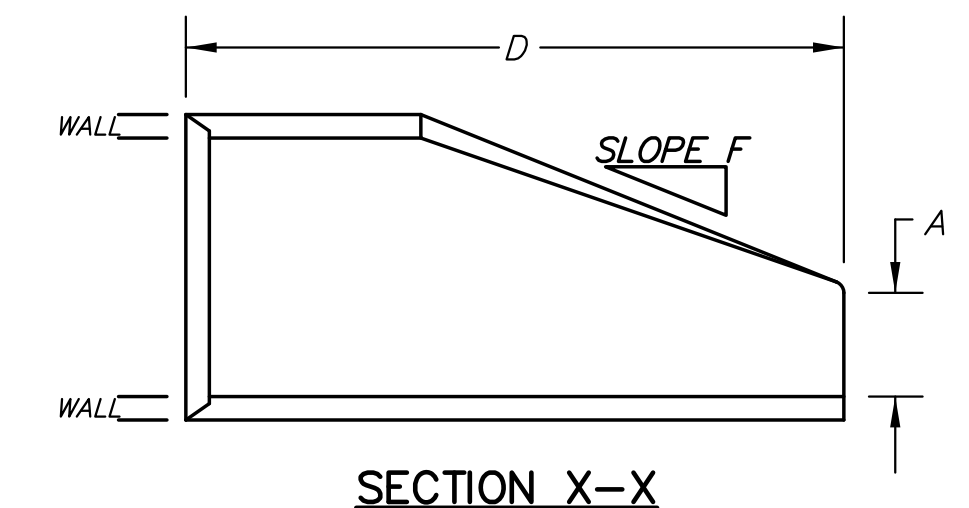
HOLES SHALL BE CAST OR DRILLED 16" FROM CENTERLINE OF JOINTS FOR BOX CULVERTS, AS SHOWN ABOVE, UNLESS FORMS ARE SET UP FOR 16" SPACING FROM OUTSIDE OF JOINT.



# END SECTIONS ARE NOT PAID FOR SEPARATELY BUT ARE INCLUDED IN THE OVERALL PIPE LENGTH.



SECTION Y-Y



SECTION X-X

**NOTES:**  
 TIES ARE SUBSIDIARY TO STORM SEWER PIPE.  
 TIE RODS SHALL BE GALVANIZED OR POWER WASHED AND DIPPED IN AN APPROVED ZINC RICH EPOXY PRIME PAINT AFTER FABRICATION.  
 TIES TO BE USED ONLY TO HOLD PIPE SECTIONS TOGETHER, NOT FOR PULLING SECTIONS TIGHT.  
 CONNECT END SECTION AND PIPE SECTIONS WITH PIPE TIES FOR THE ENTIRE SEGMENT OF LINE 2 BETWEEN END SECTION AND MANHOLE.

- TIE ROD THREADS SHALL PROJECT TO THE INSIDE OF PIPE EXCEPT AS NOTED IN PLANS.
- TIE ROD THREADS SHALL BE RECESSED WHEN PIPE IS USED AS CATTLE PASS OR PEDESTRIAN TRAIL.
- TIES MAY BE COMPLETED WITH U-BOLT TIES, SINGLE CONNECTION TIES (AS SHOWN) OR DOUBLE CONNECTION TIES.

NOTE: SEE ROADSIDE IMPROVEMENT PLANS FOR QUANTITY AND DIMENSIONS OF RIP-RAP AT EACH LOCATION.

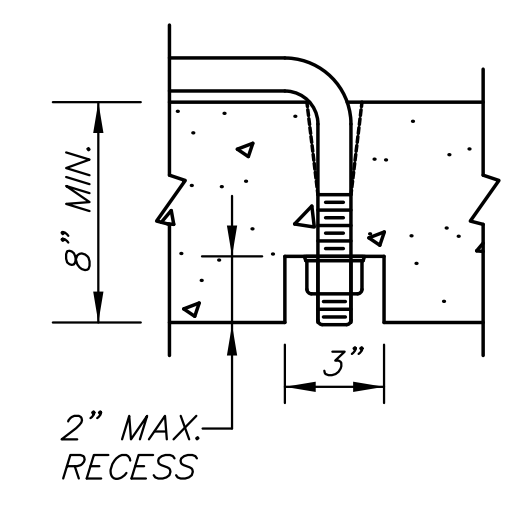
DIAM.	A	B	C	D	E	F	R1	TONGUE	WALL
12"	4"	2' 0"	4' 0-7/8"	6' 0-7/8"	2' 0"	3:1	9"	1-1/2"	2"
15"	6"	2' 3"	3' 10"	6' 1"	2' 6"	3:1	11"	2"	2 1/4"
18"	9"	2' 3"	3' 10"	6' 1"	3' 0"	3:1	12"	2-1/2"	2 1/2"
24"	9-1/2"	3' 7-1/2"	2' 6"	6' 1-1/2"	4' 0"	3:1	14"	2-1/2"	3"
30"	1' 0"	4' 6"	1' 7-3/4"	6' 1-3/4"	5' 0"	3:1	15"	3"	3-1/2"
36"	1' 3"	5' 3"	1' 10-3/4"	8' 1-3/4"	6' 0"	3:1	20"	3-1/2"	4"
42"	1' 9"	5' 3"	2'-11"	8' 2"	6' 6"	3:1	22"	3-3/4"	4-1/2"
48"	2' 0"	6' 0"	2' 2"	8' 2"	7' 0"	3:1	22"	4-1/4"	5"
54"	2' 3"	5' 5"	2' 11"	8' 4"	7' 6"	3:1	24"	4-3/4"	5-1/2"
60"	2' 6"	5' 0"	3' 3"	8' 3"	8' 0"	2.4:1	24"	5"	6"
66"	2' 0"	6' 6"	1' 9"	8' 3"	8' 6"	2:1	24"	5-1/2"	7"
72"	2' 0"	6' 6"	1' 9"	8' 3"	9' 0"	2:1	24"	6"	7-1/2"

END AREA SQ.FT.	ROUND EQUIV.	SPAN	RISE	WALL	A	B	C	D	E	R1	R2	R3	R4
3.3	24"	30"	19"	3 1/4"	8-1/2"	3' 3"	2' 9"	6' 0"	4' 0"	8-1/4"	26-1/4"	3"	7"
4.1	27"	34"	22"	3 1/2"	9"	3' 10"	2' 2"	6' 0"	4' 6"	9-1/4"	29-17/32"	3"	8"
5.1	30"	38"	24"	3 3/4"	9-1/2"	4' 6"	1' 6"	6' 0"	5' 0"	10-1/4"	32-3/4"	3"	9"
6.3	33"	42"	27"	3 3/4"	10-3/8"	4' 9"	1' 3"	6' 0"	5' 6"	11-7/16"	36-3/16"	3"	10-1/2"
7.4	36"	45"	29"	4 1/2"	11 1/4"	5' 0"	3' 0"	8' 0"	6' 0"	12-1/4"	39-1/4"	3"	12"

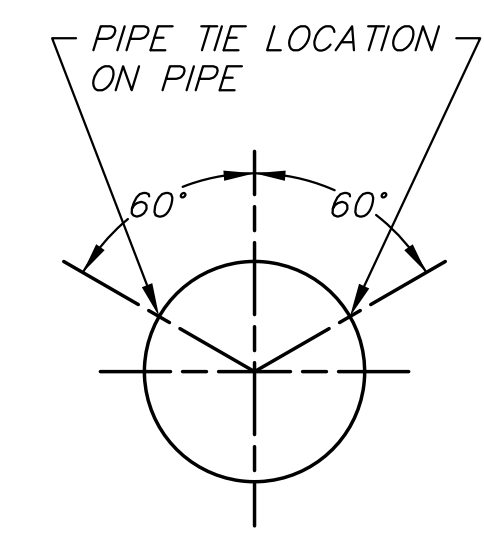
TONGUE LENGTHS BASED ON QUINN STANDARD

PIPE SIZE (INCHES)	ROD THREAD DIA.	ROD THREAD DIA.	EXTRA STRONG PIPE INSIDE DIA.
12 - 27	5/8"	5/8"	3/4"
30 - 66	3/4"	3/4"	1"
72 - 108	1"	1"	1-1/4"

PIPE SIZE LISTED IS INSIDE DIA. OF ROUND PIPE OR EQUIVALENT DIA. OF PIPE ARCH.



OPTIONAL RECESS DETAIL ②



ROUND PIPE

©2013 MKEC Engineering All Rights Reserved www.mkec.com  
 These drawings and their contents, including, but not limited to, all concepts, designs, & ideas are the exclusive property of MKEC Engineering (MKEC), and may not be used or reproduced in any way without the express consent of MKEC.

<b>RCP OUTFALL DETAIL</b>	
PROJECT NO.	472-85120
DATE	JULY 2015
SCALE	NONE
DESIGNED	DRAWN
JRA	WNJ
CHECKED	JRA
NO.	REVISION
DATE	
SHEET NO.	