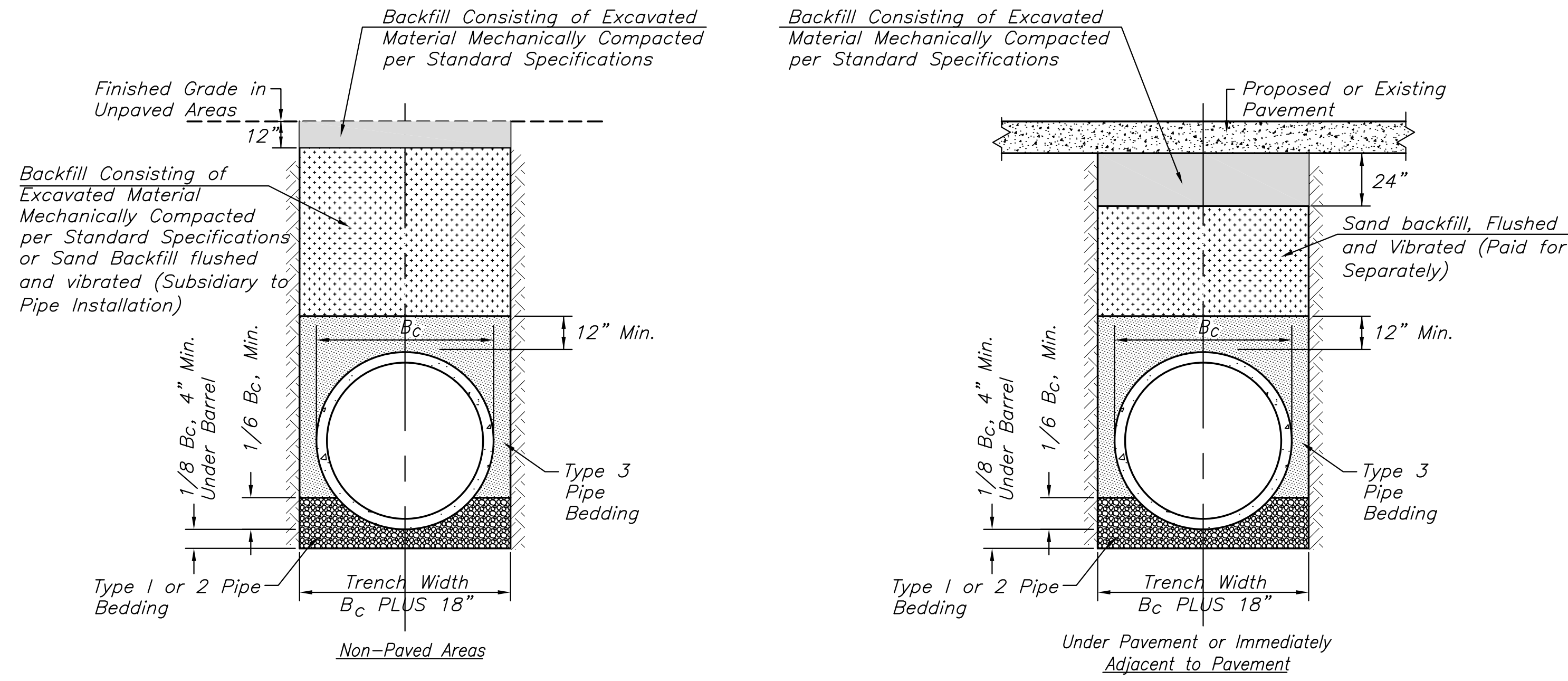
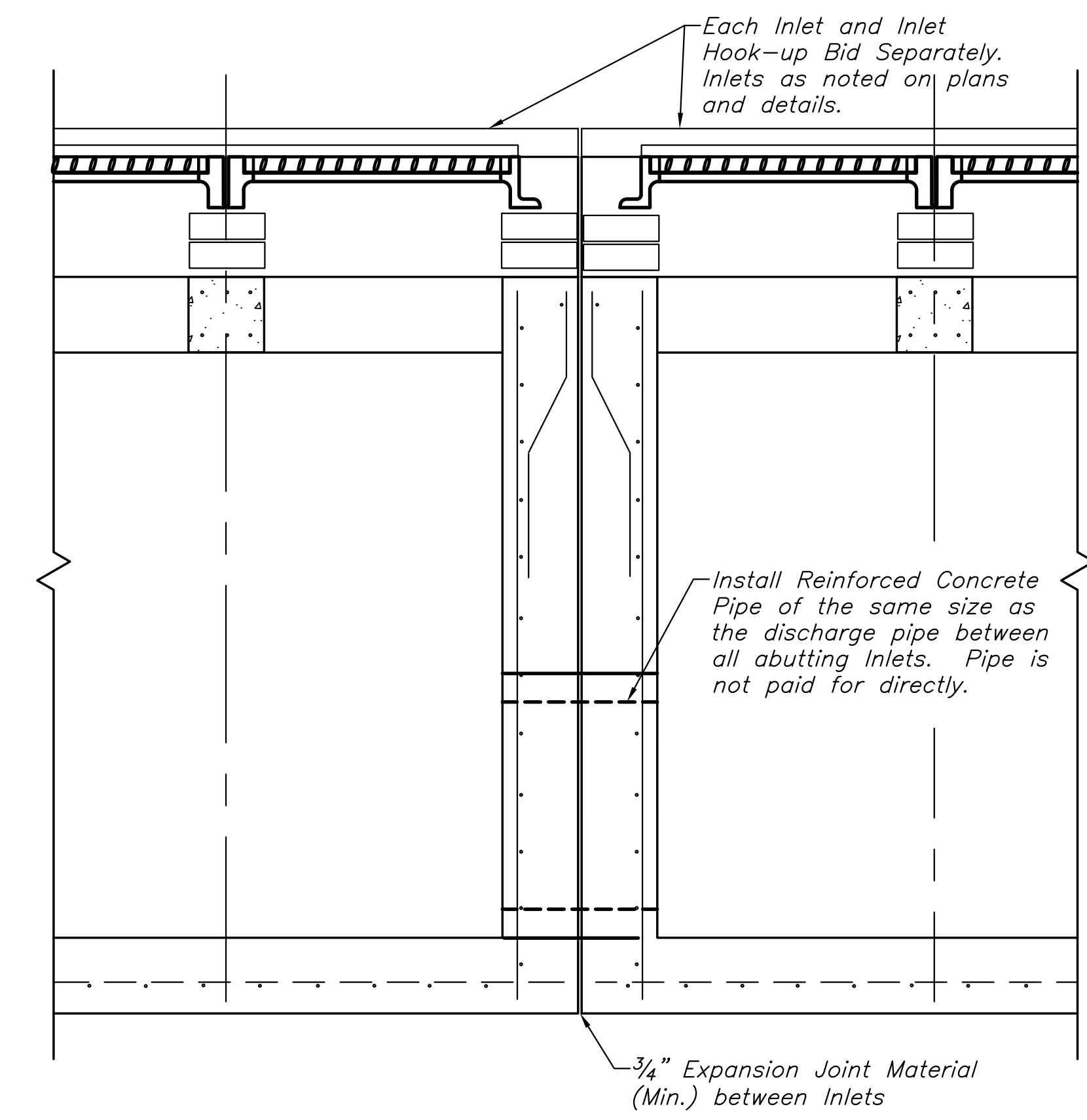


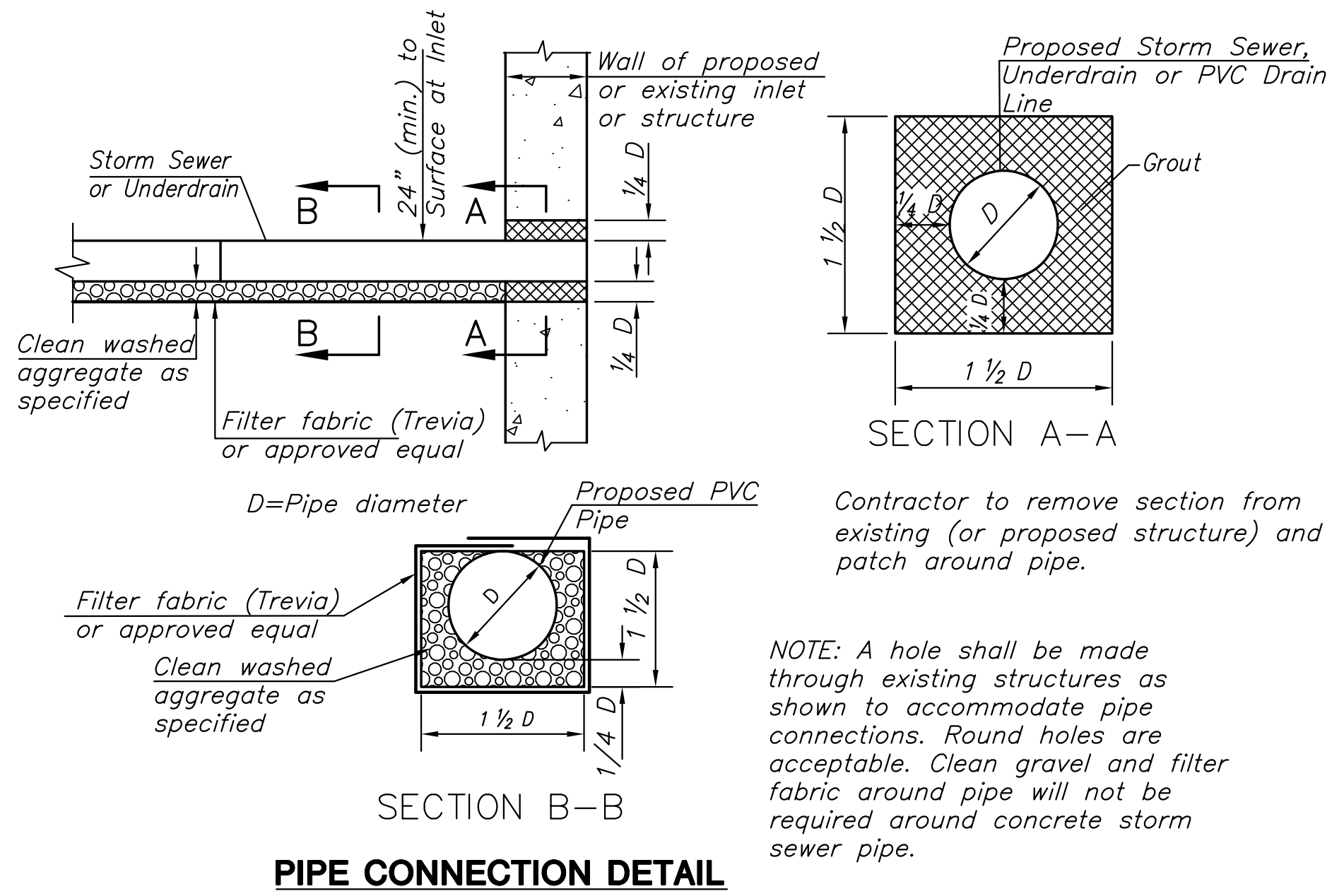
STATE	PROJECT NO.	YEAR	SHEET NO.	TOTAL SHEETS
KANSAS	87 N-0612-01	2015	21	84



STORM SEWER TRENCH DETAILS



ABUTTING INLET CONNECTION DETAIL



PIPE CONNECTION DETAIL

PAVING & INCIDENTAL DRAINAGE FOR
21ST STREET BRIDGE AT DERBY REFINERY
 AT DERBY REFINERY

©2013 MKEC Engineering All Rights Reserved www.mkec.com
 These drawings and their contents, including, but not limited to, all concepts, designs, & ideas are the exclusive property of MKEC Engineering (MKEC), and may not be used or reproduced in any way without the express consent of MKEC.

MISCELLANEOUS STORM SEWER DETAILS

PROJECT NO.	472-85120	
DATE	JULY 2015	
SCALE	N/A	
DESIGNED	DRAWN	CHECKED
JRA	WNJ	JRA

NO.	REVISION	DATE

SHEET NO.
21 OF 84

PLOTTED: Tuesday, July 21, 2015 10:11 AM

J:\PROJECTS\2013\1301040546_21ST BRIDGE AT DERBY REFINERY\CIVIL\CAD\SVS\135460001.DWG