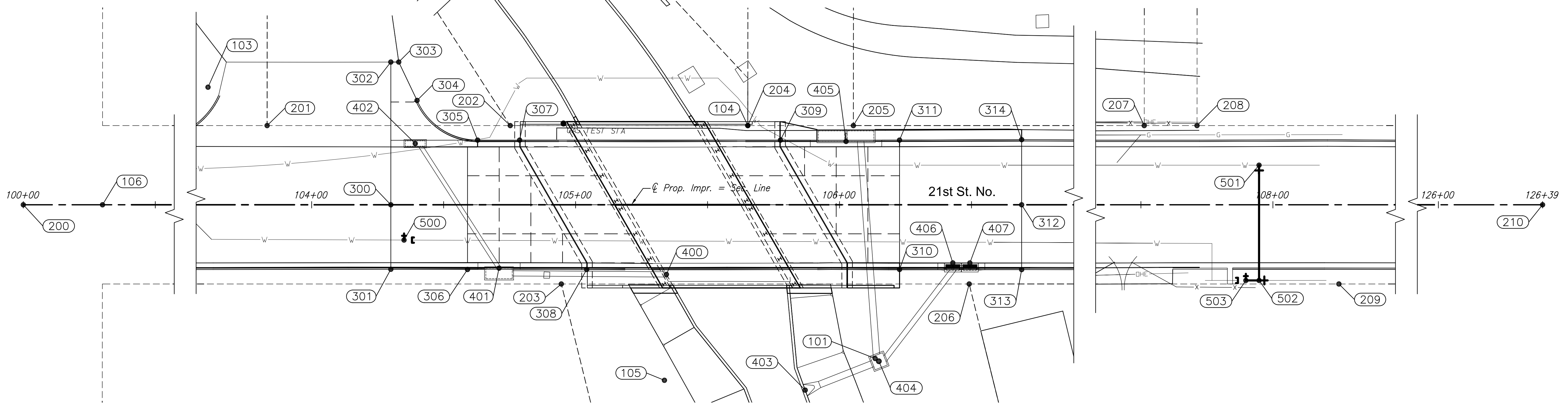
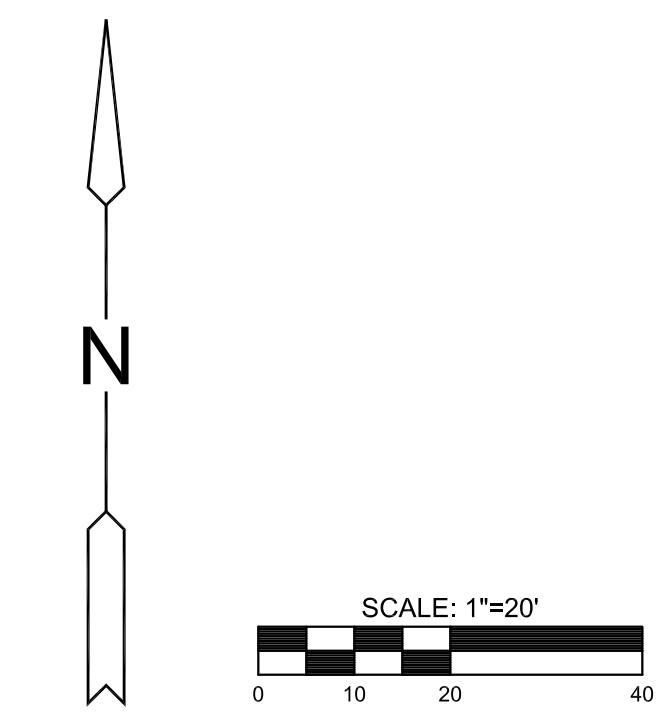


STATE	PROJECT NO.	YEAR	SHEET NO.	TOTAL SHEETS
KANSAS	87 N-0612-01	2015	31	84



CONSTRUCTION PLANS FOR  
**21ST STREET BRIDGE AT DERBY REFINERY**  
 WICHITA, KANSAS

SURVEY CONTROL POINTS					
Point #	Northing	Easting	Desc.	Station	Offset
100	1699334.72	1652344.17	BM#1	104+00.67	147.19' LT.
101	1699132.15	1652559.68	CP #1	106+13.49	58.22' RT.
102	1699332.37	1652380.90	CP #2	104+37.37	144.35' LT.
103	1699231.56	1652305.59	CP #3	103+60.73	44.54' LT.
104	1699219.73	1652510.28	CP #4	105+65.25	30.00' LT.
105	1699122.83	1652479.97	CP #5	105+33.66	66.48' RT.
106	1699182.64	1651975.47	CP #6	100+30.00	0.00' RT.



RIGHT-OF-WAY POINTS					
Point #	Northing	Easting	Desc.	Station	Offset
200	1699182.25	1651945.48	SEC. COR.	100+00.00	0.00' RT.
201	1699217.31	1652328.17	ROW	103+83.13	30.00' LT.
202	1699218.53	1652420.28	ROW	104+75.25	30.00' LT.
203	1699158.79	1652440.42	ROW	104+94.59	30.00' RT.
204	1699219.72	1652510.28	ROW	105+65.25	30.00' LT.
205	1699220.25	1652550.27	ROW	106+05.25	30.00' LT.
206	1699160.83	1652594.95	ROW	106+49.13	30.00' RT.
207	1699222.18	1652696.26	ROW	107+51.25	30.00' LT.
208	1699222.44	1652716.26	ROW	107+71.25	30.00' LT.
209	1699163.16	1652770.80	ROW	108+25.00	30.00' RT.
210	1699217.16	1654584.71	SEC. COR.	126+39.46	0.00' RT.

PAVING POINTS					
Point #	Northing	Easting	Desc.	Station	Offset
300	1699187.93	1652375.44	C/L	104+30.00	0.00' RT.
301	1699163.51	1652375.76	BC	104+30.00	24.43' RT.
302	1699241.99	1652374.72	DR	104+30.00	54.06' LT.
303	1699242.04	1652377.72	DR	104+33.00	54.07' LT.
304	1699227.59	1652384.85	DR PC	104+39.94	39.53' LT.
305	1699212.87	1652407.99	DR PT	104+62.88	24.50' LT.
306	1699163.82	1652404.81	BC PI	104+59.05	24.50' RT.
307	1699213.08	1652423.91	BC	104+78.80	24.50' LT.
308	1699164.42	1652449.96	BC	105+04.21	24.50' RT.
309	1699214.38	1652522.71	BC	105+77.61	24.50' LT.
310	1699165.99	1652568.49	BC	106+22.74	24.50' RT.
311	1699214.98	1652567.84	BC PI	106+22.74	24.50' LT.
312	1699191.09	1652614.42	C/L	106+69.00	0.00' RT.
313	1699166.55	1652614.74	BC	106+69.00	24.55' RT.
314	1699215.75	1652614.09	BC	106+69.00	24.66' LT.

STORM SEWER POINTS					
Point #	Northing	Easting	Desc.	Station	Offset
400	1699162.95	1652480.19	24" RCP	105+34.42	26.37' RT.
401	1699164.48	1652416.75	INLET	104+71.00	24.00' RT.
402	1699211.25	1652384.38	INLET	104+39.25	23.20' LT.
403	1699119.81	1652533.36	30" ES	105+87.00	70.21' RT.
404	1699131.12	1652561.11	MH	106+14.90	59.27' RT.
405	1699214.21	1652547.57	INLET	106+02.47	24.00' LT.
406	1699168.73	1652588.63	INLET	106+42.92	22.02' RT.
407	1699168.81	1652595.09	INLET	106+49.38	22.03' RT.

WATER POINTS					
Point #	Northing	Easting	Desc.	Station	Offset
500	1699174.64	1652380.61	BO	104+35.00	13.36' RT.
501	1699207.76	1652739.96	TS&V	107+94.75	15.00' LT.
502	1699164.11	1652740.54	TEE	107+94.75	25.65' RT.
503	1699164.04	1652735.54	BO	107+89.75	28.66' RT.

©2013 MKEC Engineering  
 All Rights Reserved  
 www.mkec.com  
 These drawings and their contents, including, but not limited to, all concepts, designs, & ideas are the exclusive property of MKEC Engineering (MKEC), and may not be used or reproduced in any way without the express consent of MKEC.

<b>BUBBLE MAP</b>	
PROJECT NO.	472-85120 448-90656
DATE	JULY 2015
SCALE	1"=10'
DESIGNED	DRAWN
JRA	DMU
CHECKED	JRA
NO.	REVISION
	DATE
SHEET NO.	
31 OF 84	