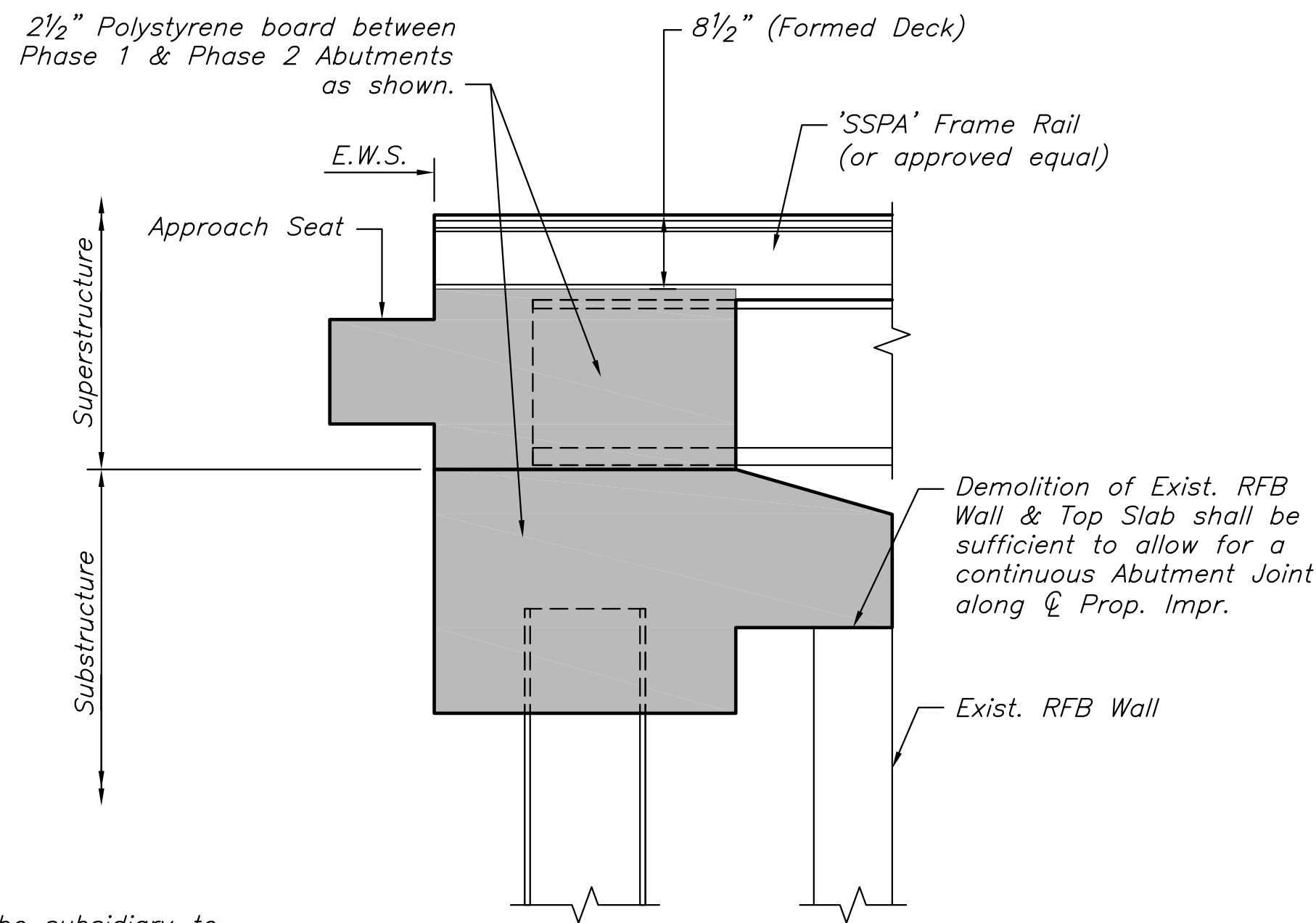


**ABUTMENT JOINT ELEVATION**

Abutments No. 1 & 2 Looking Forward Station



**ABUTMENT JOINT SECTION**

Abut. No. 1 (Looking North)  
Abut. No. 2 (Looking South)

**NOTES:**

Abutment Joints shall be subsidiary to the bid item "Concrete (Grade 4.0) (AE)".

Reinforcement not shown for clarity (See Abutment Details).

**GENERAL NOTES**

THE CONTRACTOR SHALL VERIFY ALL DIMENSIONS TO INSURE ACCURACY OF THE EXPANSION JOINT PRIOR TO FABRICATION.

STEEL RAILS SHALL BE ASTM-A36 (OR EQUIVALENT).

ALL STUDS TO BE ASTM-A108 STEEL AND SHALL BE ELECTRIC ARC END-WELDED W/ COMPLETE FUSION.

AFTER FABRICATION, ALL ASSEMBLIES SHALL BE HOT-DIPPED GALVANIZED TO ASTM-A123.

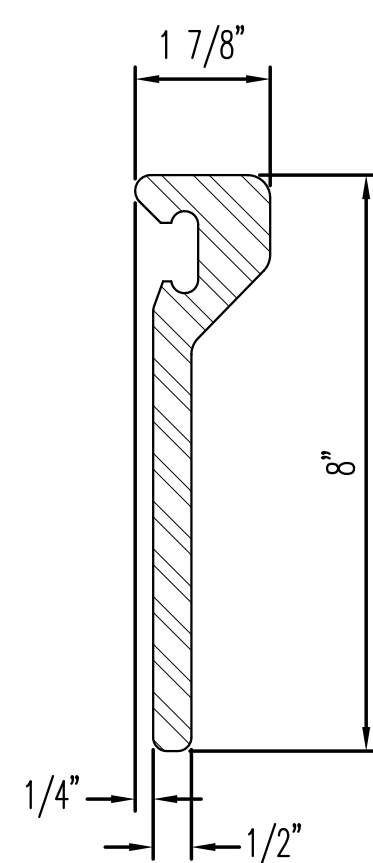
FIELD SPLICES IN FRAME RAIL AND STRIP SEAL ARE NOT ALLOWED.

NEOPRENE SEAL TO BE FIELD INSTALLED BY CONTRACTOR USING DELASTIBOND LUBRICANT/ADHESIVE AND SPECIALIZED EQUIPMENT RECOMMENDED BY THE MANUFACTURER.

**SUMMARY OF QUANTITIES**

|                        |         |
|------------------------|---------|
| Bridge Deck Strip Seal | 53 L.F. |
|------------------------|---------|

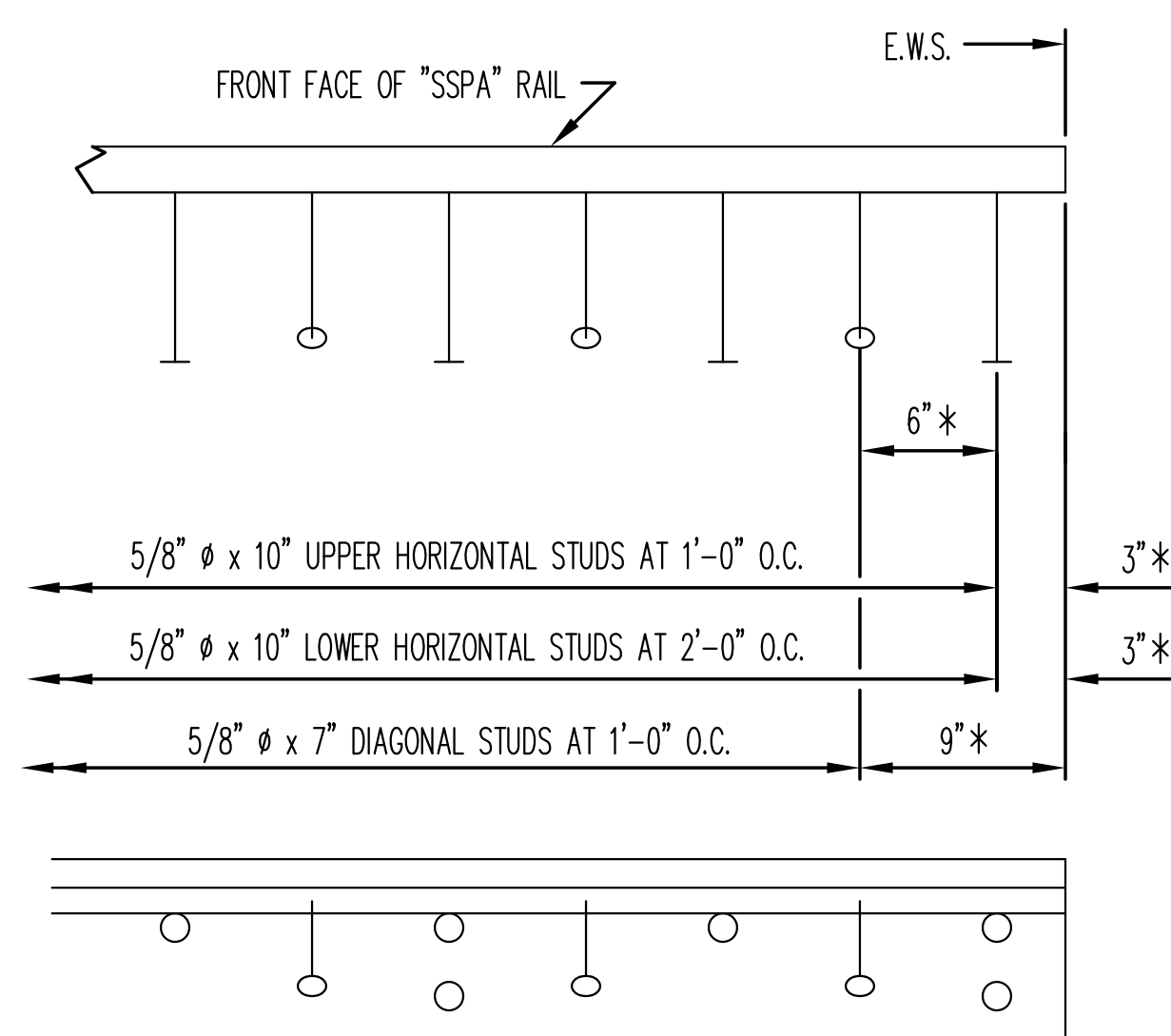
**NOTE:**  
All frame rails, stud anchors, and neoprene strip seal required for installation in both phases of the bridge shall be subsidiary to the bid item "Bridge Deck Strip Seal". Refer to Special Provision 719 - Bridge Deck Strip seal for measurement and payment.



**'SSPA' FRAME RAIL**

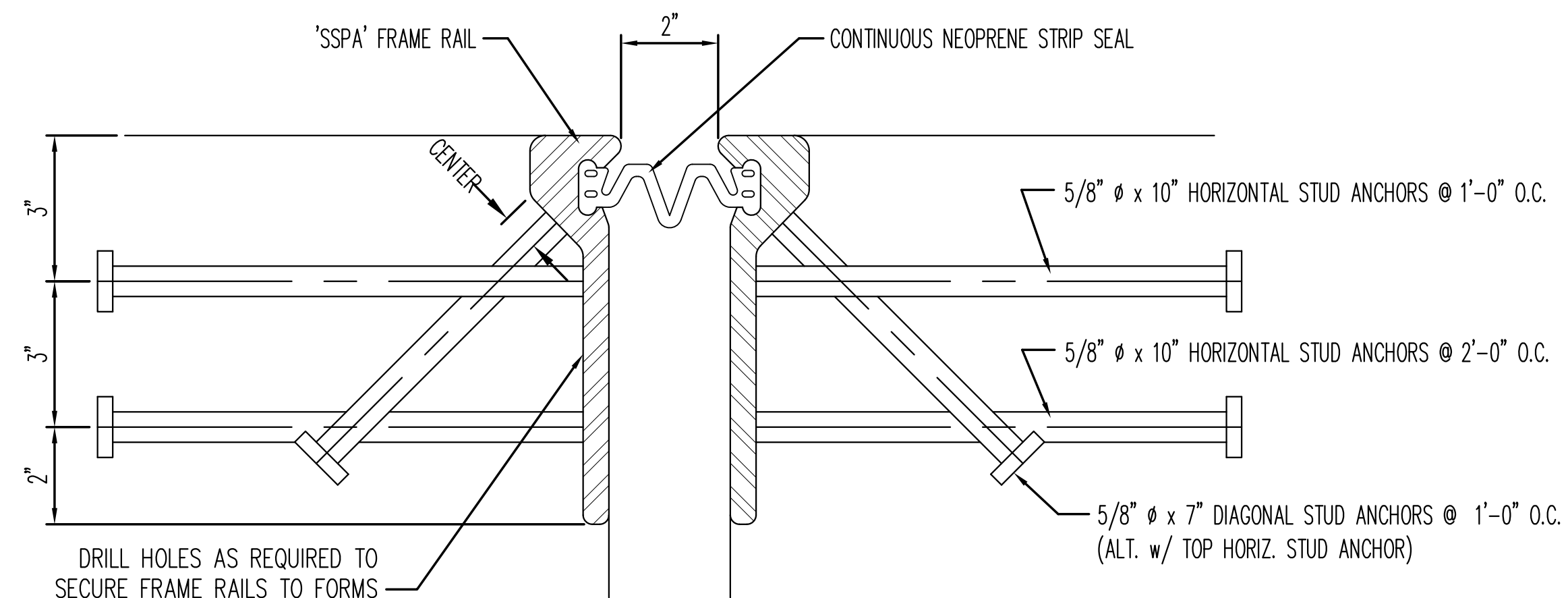
**NOTE:**

IF THE CONTRACTOR PREFERRED A FRAME RAIL OR STRIP SEAL PRODUCT DIFFERENT FROM THOSE SPECIFIED ON THE PLANS, IT IS HIS RESPONSIBILITY TO PROVIDE SHOP DRAWINGS AND/ OR CALCULATIONS CERTIFYING THAT PRODUCTS ARE OF EQUAL QUALITY AND FUNCTION. THESE DOCUMENTS SHALL BEAR THE SEAL OF A LICENSED PROFESSIONAL ENGINEER IN THE STATE OF KANSAS.

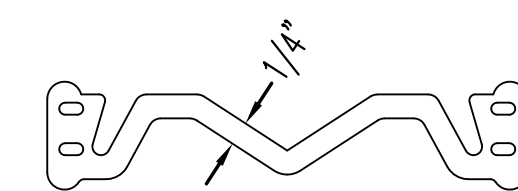


**"SSPA" STUD LAYOUT SEQUENCE FROM EWS**

\* ADJUST DIMENSIONS AS NEEDED TO ACCOMPLISH OVERALL PLAN DIMENSION.



**SECTION THRU 'SSPA' JOINT**



**"L2" SERIES STRIP SEAL**

MINIMUM JOINT OPENING FOR EASE OF INSTALLATION = 1 1/2" (INSTALL PER MANUFACTURER SPECIFICATIONS)

| STRIP SEAL MOVEMENTS |     |
|----------------------|-----|
| TEMPERATURE          | "W" |
| MAXIMUM              | 0"  |
| MID                  | 2"  |
| MINIMUM              | 4"  |



300 E. CHERRY STREET  
NORTH BALTIMORE, OHIO 45872  
419.257.3561  
FAX: 419.257.2200

4201 NOREX DRIVE  
CHASKA, MINNESOTA 55318  
952.368.3000  
FAX: 952.448.7000

DSBROWN.COM



©2013 MKEC Engineering All Rights Reserved www.mkec.com  
These drawings and their contents, including, but not limited to, all concepts, designs, & ideas are the exclusive property of MKEC Engineering (MKEC), and may not be used or reproduced in any way without the express consent of MKEC.

**ABUTMENT JOINT & DECK STRIP SEAL DETAILS**

|             |              |         |
|-------------|--------------|---------|
| PROJECT NO. | 87 N-0612-01 |         |
| DATE        | JULY 2015    |         |
| SCALE       | NO SCALE     |         |
| DESIGNED    | DRAWN        | CHECKED |
| KJS         | DMU          | KJS     |
| NO.         | REVISION     | DATE    |

SHEET NO.