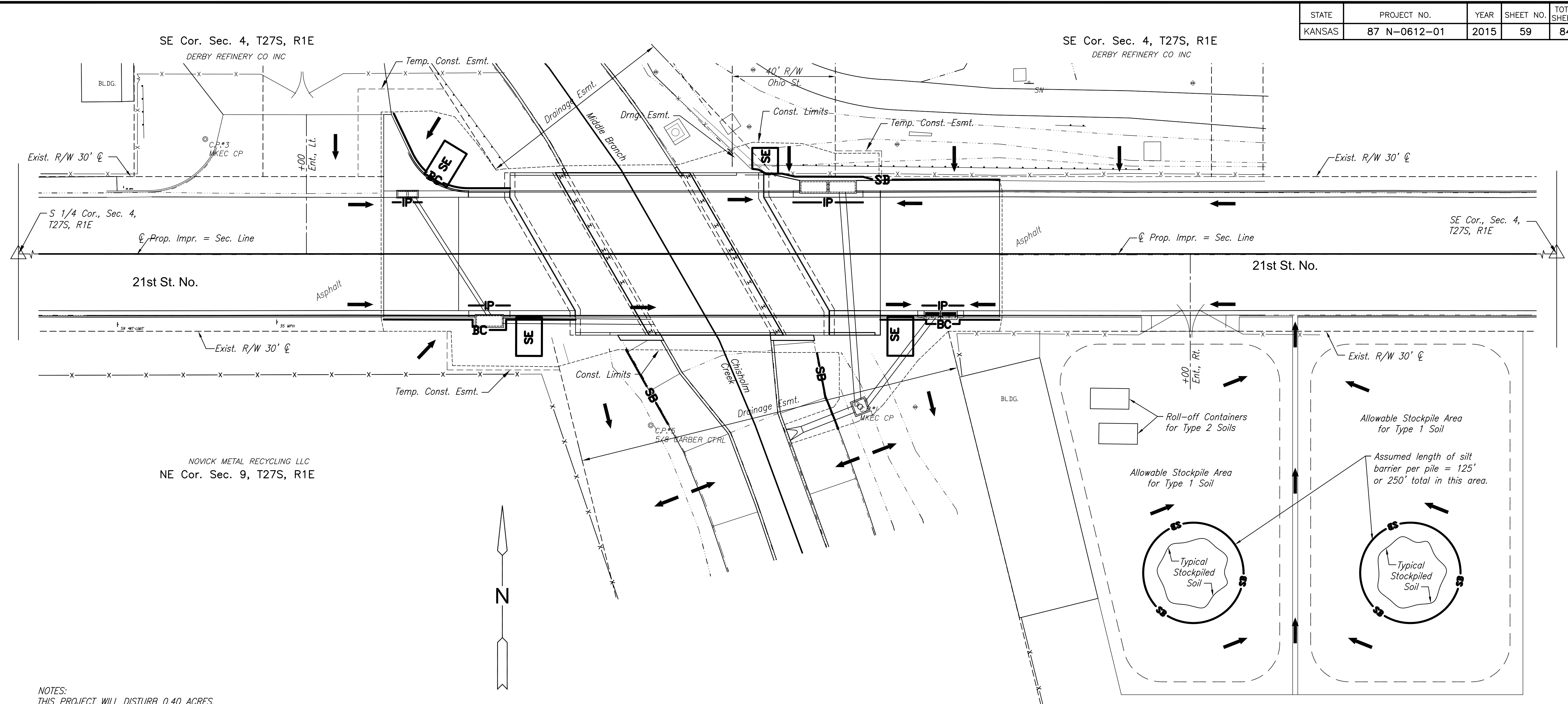


STATE	PROJECT NO.	YEAR	SHEET NO.	TOTAL SHEETS
KANSAS	87 N-0612-01	2015	59	84



CONSTRUCTION PLANS FOR
21ST STREET BRIDGE AT DERBY REFINERY
 WICHITA, KANSAS



NOTES:
THIS PROJECT WILL DISTURB 0.40 ACRES.

REFER TO CITY OF WICHITA STANDARDS FOR BMP INSTALLATION, INSPECTION AND MAINTENANCE DETAILS AND SPECIFICATIONS.

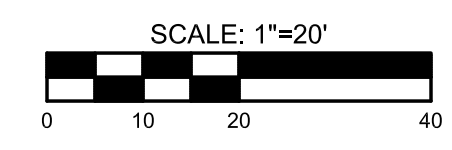
COST FOR EACH EROSION AND SEDIMENT CONTROL ITEM SHALL INCLUDE MAINTENANCE, INSPECTION AND EVENTUAL REMOVAL. BESIDES KEEPING EACH DEVICE IN WORKING ORDER, MAINTENANCE SHALL INCLUDE, AT A MINIMUM, SEDIMENT REMOVAL BEFORE 50% OF THE DEVICE'S CAPACITY IS REACHED.

CONTRACTOR SHALL ADJUST EROSION AND SEDIMENT CONTROL PLANS TO CONFORM TO ACTUAL CONSTRUCTION OPERATIONS. ALL CHANGES TO PLAN SHALL BE APPROVED BY THE CITY.

STABILIZED ENTRANCES SHALL BE PROVIDED AS DIRECTED BY THE CITY. 4 TOTAL ENTRANCES ARE ANTICIPATED ON THE PROJECT.

STOCKPILING OF EXCAVATED MATERIAL ON THE PROJECT SITE IS GENERALLY PROHIBITED. SMALL AND INTERIM STOCK PILES NOT IMMEDIATELY HAULED OFF-SITE SHOULD BE ENCLOSED AND PROTECTED WITH SILT BARRIER AROUND THE ENTIRE CIRCUMFERENCE OF THE STOCK PILE. INSTALLING AND MAINTAINING THIS FENCE SHALL BE CONSIDERED SUBSIDIARY TO THE BID ITEM "EROSION CONTROL BMP (SILT BARRIER)"

EROSION CONTROL DEVICES WILL NEED TO BE INSTALLED AS APPLICABLE FOR THE APPROPRIATE CONSTRUCTION PHASE. CONTRACTOR SHALL ADJUST EROSION AND SEDIMENT CONTROL PLAN TO CONFORM TO ACTUAL CONSTRUCTION OPERATIONS. ONCE INSTALLED, THE DEVICES SHALL REMAIN IN-PLACE AND CONTINUE TO BE MAINTAINED UNTIL NO LONGER NECESSARY AS DETERMINED BY THE CITY.



LEGEND

- | | | | |
|--|-------------------------------|--|---------------------------------|
| | STABILIZED ENTRANCE | | SILT BARRIER |
| | STABILIZED ENTRANCE REMOVED | | SILT BARRIER REMOVED |
| | AREA INLET PROTECTION | | BACK OF CURB PROTECTION |
| | AREA INLET PROTECTION REMOVED | | BACK OF CURB PROTECTION REMOVED |
| | CURB INLET PROTECTION | | DITCH CHECK PROTECTION |
| | CURB INLET PROTECTION REMOVED | | DITCH CHECK PROTECTION REMOVED |
| | DRAINAGE FLOW DIRECTION | | CONSTRUCTION LIMITS |

STOCKPILE NOTE:
IF CONTRACTOR USES A DIFFERENT STOCKPILE AREA, SIMILAR EROSION CONTROL PROVISIONS SHALL BE UTILIZED.

DERBY REFINERY CO INC
NE Cor. Sec. 9, T27S, R1E

EROSION CONTROL BMP SUMMARY		
ITEMS	QUANTITY	UNIT
Erosion Control BMP (Back of Curb Protection)	133	L.F.
Erosion Control BMP (Curb Inlet Protection)	4	Each
Erosion Control BMP (Stabilization Entrances)	4	Each
Erosion Control BMP (Silt Barrier)	156	L.F.

RECAPITULATION		
BID ITEMS	TOTAL	UNIT
Erosion Control BMP (Back of Curb Protection)	133	L.F.
Erosion Control BMP (Curb Inlet Protection)	4	Each
Erosion Control BMP (Stabilization Entrances)	4	Each
Erosion Control BMP (Silt Barrier)	156	L.F.

©2013 MKEC Engineering All Rights Reserved www.mkec.com
These drawings and their contents, including, but not limited to, all concepts, designs, & ideas are the exclusive property of MKEC Engineering (MKEC), and may not be used or reproduced in any way without the express consent of MKEC.

EROSION CONTROL PLAN

PROJECT NO.	472-85120	
DATE	JULY 2015	
SCALE	1"=20'	
DESIGNED	DRAWN	CHECKED
JRA	WNJ	JRA
NO.	REVISION	DATE