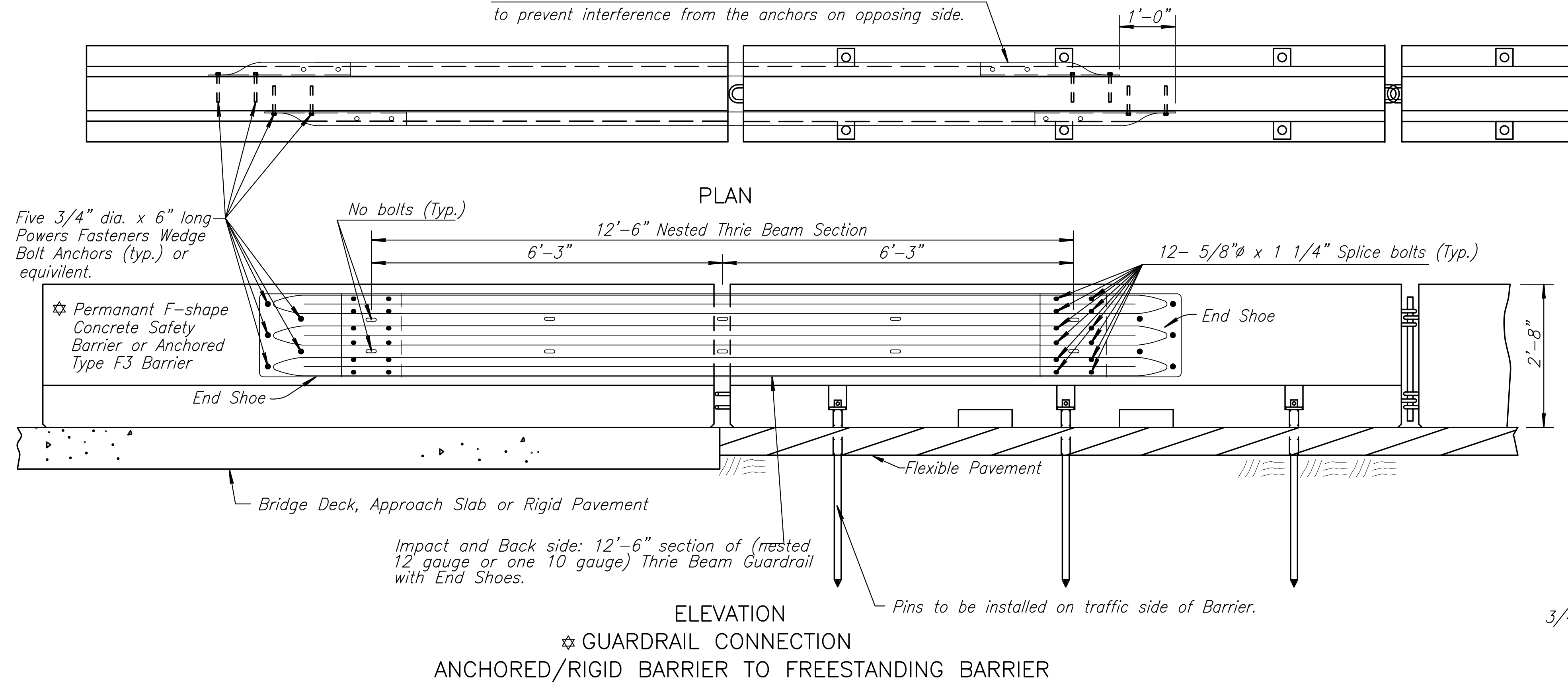
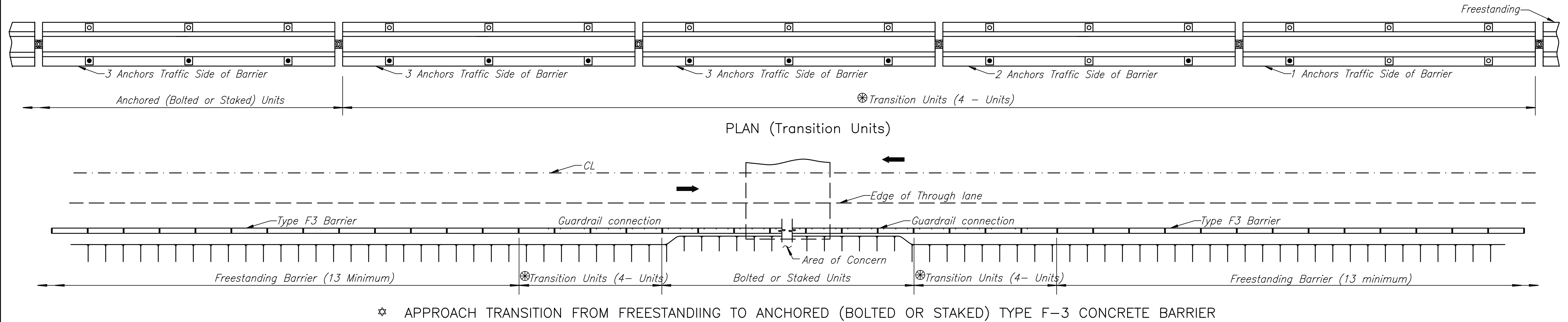
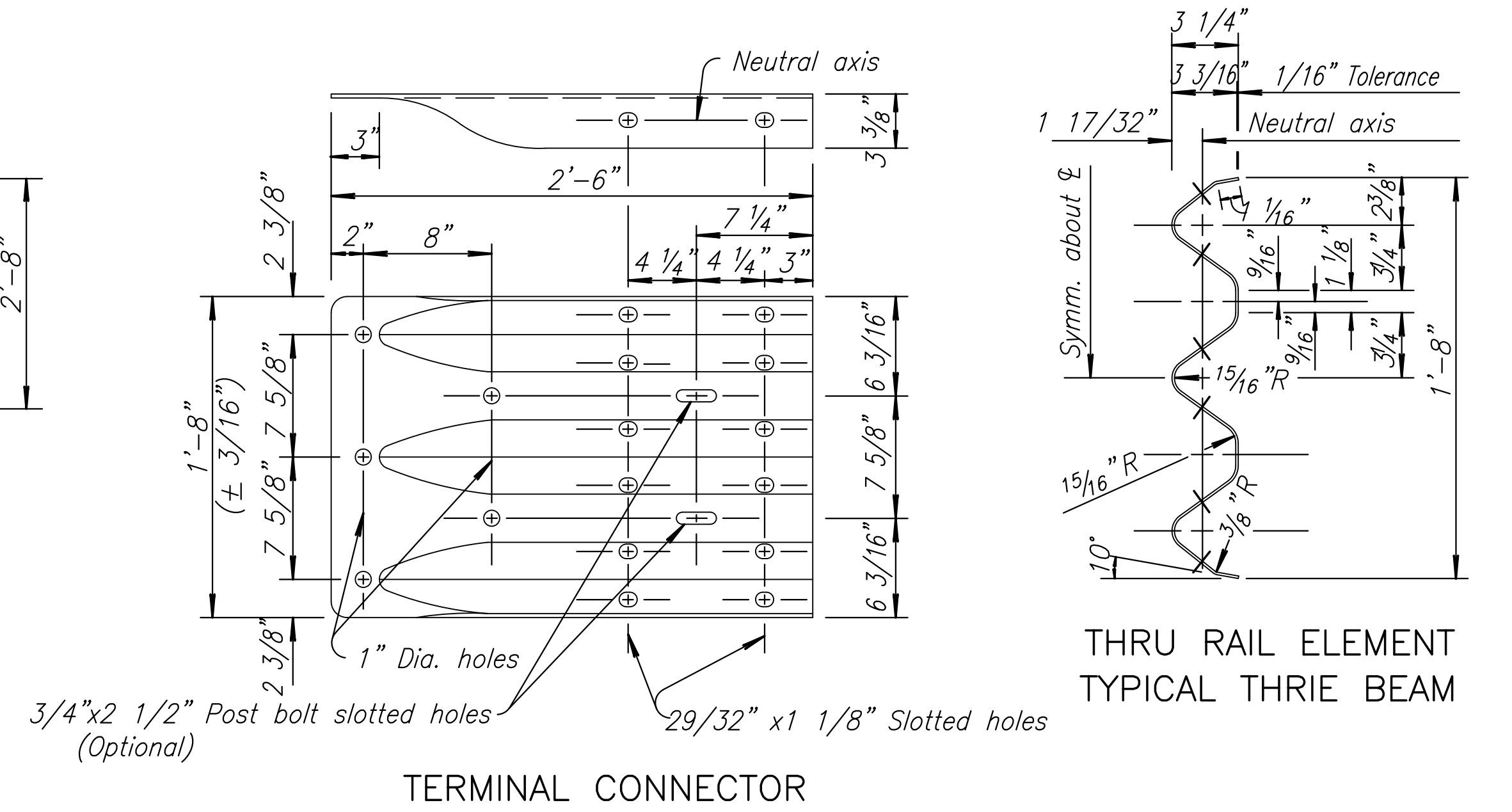


STATE	PROJECT NO.	YEAR	SHEET NO.	TOTAL SHEETS
KANSAS	87 N-0612-01	2015	80	84

Thrie beam piece on non-impact side is offset 1' downstream to prevent interference from the anchors on opposing side.



GENERAL NOTES:  
The work and materials required for the installation & removal of the guardrail connection and barrier anchors as shown on this sheet shall be subsidiary to the "Concrete Safety Barrier" bid item.



☆ TYPICAL INSTALLATIONS

- 1) Type F3 barrier anchored to rigid pavement with bolted connection or bolted to a bridge deck. -the transition between this anchored barrier and the freestanding needs the transition barriers plus guardrail as shown above.
- 2) Permanent F-shape barrier -the transition between this permanent barrier and the freestanding Type F3 needs the transition barriers plus guardrail as shown above.
- 3) Type F3 barrier anchored with straps on rigid pavement or a bridge deck -the transition between this anchored barrier and the freestanding needs NO transition barriers or NO guardrail.
- 4) Type F3 barrier pinned/staked to asphalt pavement -the transition between this anchored barrier and the freestanding needs the transition barriers but NO guardrail.

3					
2					
1	1-30-07	Rem. temp. details from perm. barrier	S.W.K.	J.O.B.	
NO.	DATE	REVISIONS	BY	APP'D	

KANSAS DEPARTMENT OF TRANSPORTATION

TEMPORARY CONCRETE SAFETY BARRIER TYPE F3 TRANSITION LAYOUTS

RD622D 80

FHWA APPROVAL	01-19-07	APP'D. James O. Brewer	
DESIGNED	DETAILED	QUANTITIES	TRACED Bowser
DESIGN CK.	DETAIL CK.	QUAN. CK.	TRACE CK. King

DOT Graphics Certified 07-22-2010