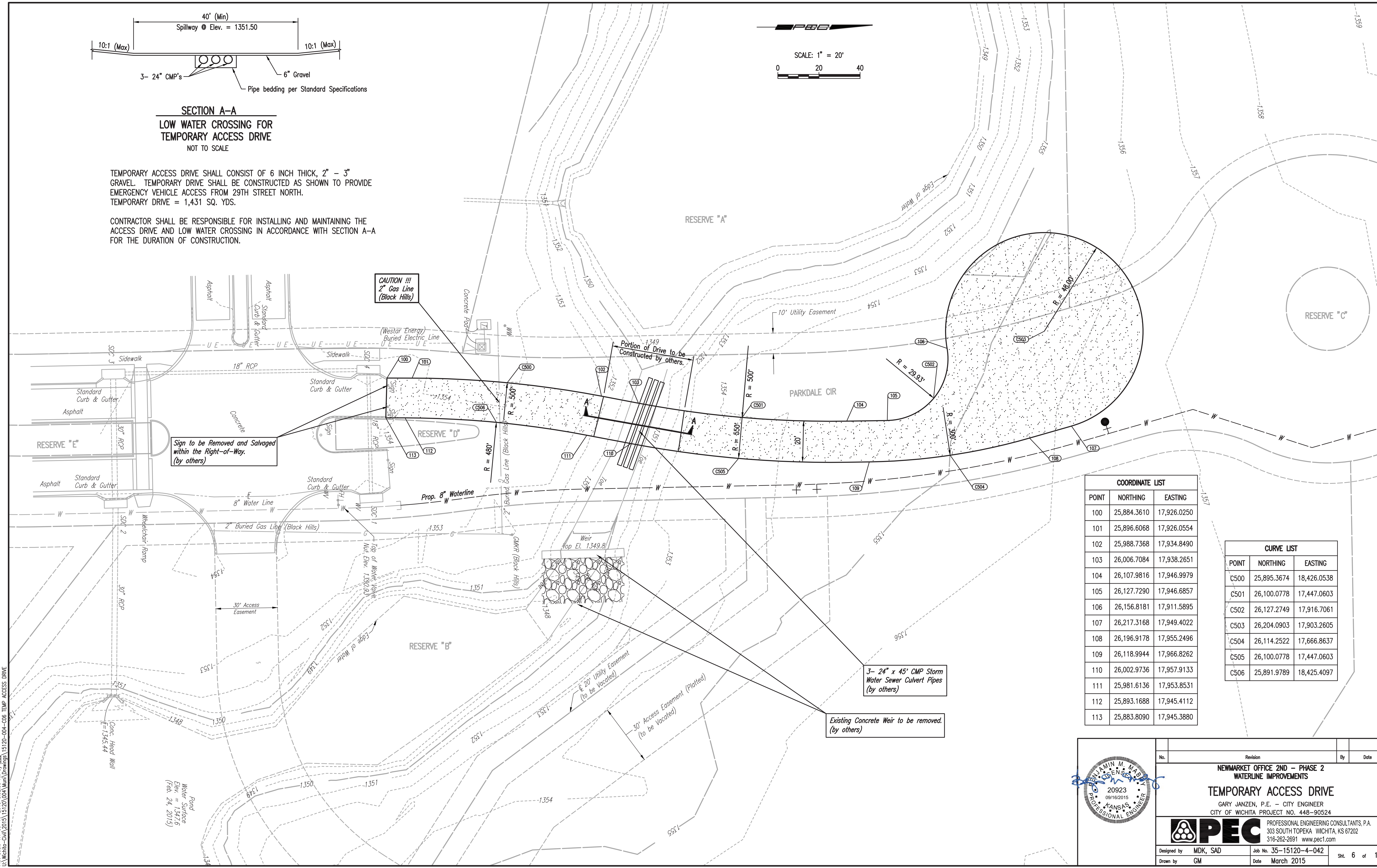
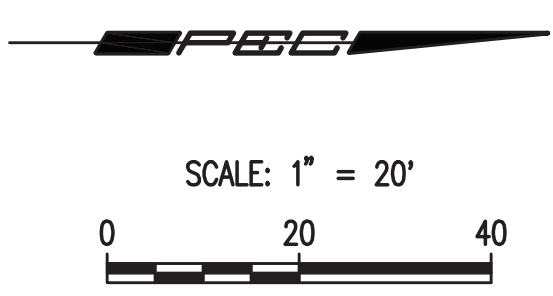


SECTION A-A
LOW WATER CROSSING FOR
TEMPORARY ACCESS DRIVE
 NOT TO SCALE

TEMPORARY ACCESS DRIVE SHALL CONSIST OF 6 INCH THICK, 2" - 3" GRAVEL. TEMPORARY DRIVE SHALL BE CONSTRUCTED AS SHOWN TO PROVIDE EMERGENCY VEHICLE ACCESS FROM 29TH STREET NORTH. TEMPORARY DRIVE = 1,431 SQ. YDS.

CONTRACTOR SHALL BE RESPONSIBLE FOR INSTALLING AND MAINTAINING THE ACCESS DRIVE AND LOW WATER CROSSING IN ACCORDANCE WITH SECTION A-A FOR THE DURATION OF CONSTRUCTION.



Sign to be Removed and Salvaged within the Right-of-Way. (by others)

CAUTION !!!
 2" Gas Line (Black Hills)

Portion of Drive to be Constructed by others.

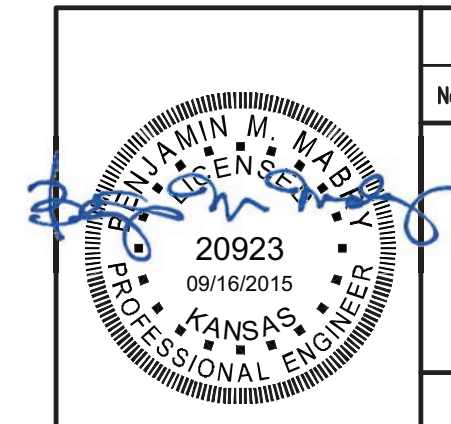
3- 24" x 45' CMP Storm Water Sewer Culvert Pipes (by others)

Existing Concrete Weir to be removed. (by others)

COORDINATE LIST		
POINT	NORTHING	EASTING
100	25,884.3610	17,926.0250
101	25,896.6068	17,926.0554
102	25,988.7368	17,934.8490
103	26,006.7084	17,938.2651
104	26,107.9816	17,946.9979
105	26,127.7290	17,946.6857
106	26,156.8181	17,911.5895
107	26,217.3168	17,949.4022
108	26,196.9178	17,955.2496
109	26,118.9944	17,966.8262
110	26,002.9736	17,957.9133
111	25,981.6136	17,953.8531
112	25,893.1688	17,945.4112
113	25,883.8090	17,945.3880

CURVE LIST		
POINT	NORTHING	EASTING
C500	25,895.3674	18,426.0538
C501	26,100.0778	17,447.0603
C502	26,127.2749	17,916.7061
C503	26,204.0903	17,903.2605
C504	26,114.2522	17,666.8637
C505	26,100.0778	17,447.0603
C506	25,891.9789	18,425.4097

Sowed 09-16-2015 8:52:10 AM by CSI
 Plot Scale 1:1 09-16-2015 8:52:30 AM by CSI
 U:\Wichita-Civil\2015\15120\004\Drawings\15120-004-008 TEMP ACCESS DRIVE



No.	Revision	By	Date
NEWMARKET OFFICE 2ND - PHASE 2 WATERLINE IMPROVEMENTS TEMPORARY ACCESS DRIVE GARY JANZEN, P.E. - CITY ENGINEER CITY OF WICHITA PROJECT NO. 448-90524			
PEC PROFESSIONAL ENGINEERING CONSULTANTS, P.A. 303 SOUTH TOPEKA WICHITA, KS 67202 316-262-2691 www.pec1.com			
Designed by	MDK, SAD	Job No.	35-15120-4-042
Drawn by	GM	Date	March 2015
			Sht. 6 of 11