

WHISPERING LAKES ESTATES

WICHITA, SEDGWICK COUNTY, KANSAS

4257

LIBRARY COPY
SEDGWICK COUNTY, KANSAS
REGISTERED DEEDS

FEMA FLOODPLAIN BOUNDARY
PER CASE NO. 99-07-525A
DATED AUGUST 11, 1998.

*Do Not Use
Benchmarks
For
Elevations
of
Structures*

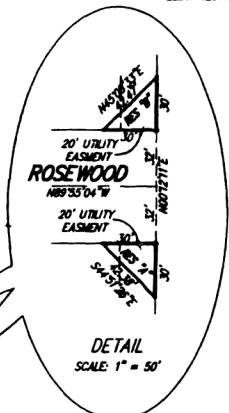
SCALE: 1"=100'

LEGEND

- △ = E1/4 CORNER (FOUND)
- = STONE W/ CUT (FOUND)
- = 1/2" REBAR W/SRB CAP (SET)

BLOCK	LOT NO.	ELEVATION (N.G.M.D.)
1	4, 5	1291.5
1	12, 13, 14, 15, 16, 17, 18, 19, 20, 21, 22	1294
	23, 24, 25, 26, 27, 28	
	29, 30, 31, 32, 33	
	34, 35, 36, 37, 38, 39	
	40, 41, 42	
2	4, 5, 6, 7	1296.2
3	7, 8	1298.7
3	18, 19, 20, 21, 22, 23	1298.4
	24, 25, 26, 27	
4	1, 2, 3, 4, 5, 6, 7	1297.1
	21, 24, 25	
	28, 29, 30, 31, 32, 33, 34, 35, 36, 37	
4	12, 13, 14, 15, 16, 17, 18, 19, 20, 21, 22	1295.1
	23, 24, 25, 26, 27, 28	
5	1, 2, 3, 4, 5, 6, 7	1294
5	8, 9, 10	1293.5
	11, 12, 13, 14, 15, 16, 17, 18	
5	19, 20, 21, 22	1292

BENCHMARK: R.R. SPIKE IN POWER POLE
47' E. & 85' N. OF S.E. COR.
NE 1/4 SEC. 36-27S-2E
ELEV=1297.62 (N.G.M.D.)



FOR REFERENCE ONLY

