

GENERAL NOTES:

1. The Contractor shall comply with all applicable safety regulations. All construction shall be completed following current City Standard Specifications and Special Provisions.

2. Contractor will be required to provide notice to utility companies a minimum of seventy-two (72) hours prior to any excavation, as follows:

Kansas One—Call 687-2470

The Contractor must notify the following in case of an emergency:

Cox Communications 260-7204
 Kansas Gas Service 1-888-482-4950
 Black Hills Energy 941-1629
 Westar 383-8600
 AT&T 1-800-286-8313
 City of Wichita Water Department 262-6000
 City of Wichita Sewer Maintenance 262-6000

3. Utility service lines, poles, etc. are to be adjusted as necessary by others prior to construction unless the plans specifically call for their adjustment by the Contractor or unless the plans specifically identify a utility to be adjusted by its owner during construction. Existing utilities and their location, as shown on the plans, represent the best information obtainable for design. The Contractor will be required to work around existing utilities within the right-of-way which do not conflict with proposed construction.

4. Rubble from the removal of miscellaneous structures and excess excavation which is to be wasted shall be disposed of on sites to be provided by the Contractor. These sites shall be approved by the Engineer as to suitability, appearance and site location. Locations, in the opinion of the Engineer, that will leave an unsightly appearance will not be approved. All disposal sites must be approved by the Kansas Department of Health and Environment. Material either stockpiled or disposed of in a flood plain would require a Kansas State Board of Agriculture permit. Any material dumped in waters of the United States or wetlands is subject to U.S. Corps. of Engineers permitting regulations. Any material buried or stockpiled beyond approved construction limits would require additional archaeological investigations unless buried in a previously approved borrow location.

5. Trees and shrubs in public right-of-way which are in direct conflict with proposed new construction shall be removed by the Contractor with the Engineer's approval. Trees and shrubs which are not in direct conflict with proposed new construction shall be saved and protected from damage.

6. The Contractor shall give all property owners and/or tenants of developed property abutting the construction of this project a minimum of ten (10) days notice prior to start of construction.

7. The Contractor shall be responsible for preserving property irons. The Contractor will be required to re-establish any property irons which are damaged or destroyed by his construction operations. Such irons shall be re-established by a licensed land surveyor in accordance with state laws.

8. The Water Distribution Division shall field locate water valves one time during construction when requested by the Contractor. It shall be the Contractor's responsibility to preserve such field locations during the construction process. Water valves, valve boxes or fire hydrants damaged during construction shall be repaired by the Contractor at his own expense. Valve boxes and water meters within the project limits shall be adjusted to match field grades.

9. The Contractor shall notify the consultant engineer and Tom Mason with the City at 316-268-4574 with the anticipated construction start date and notify them of project completion. Staking and inspection for this project will be the responsibility of the Contractor.

10. If traffic is impacted by construction, a traffic control plan must be submitted and approved by the City Traffic Engineer, Brian Coon at traffic@wichita.gov before construction can begin. The Contractor shall be responsible for all traffic control measures to facilitate construction. All construction zone markings and signage shall conform to the latest version of the Manual on Uniform Traffic Control Devices (MUTCD) as published by the U.S. Dept. of Transportation, Federal Highway Administration. All costs associated with construction markings and signage shall be the Contractor's responsibility.

11. All elevations shown are U.S.G.S. Datum (NAVD 88).

12. All areas disturbed during construction that will not be under proposed pavement shall be restored to match existing conditions.

13. All existing pavement and curb and gutter within the construction limits shall be saw cut, full depth, to the lines shown on the plans, or to the nearest joint, and removed, unless otherwise noted. If removal limits are within three feet of a joint, remove to the joint.

14. All traffic control devices in the work zone (including markings and signs) and their installation and maintenance shall comply with the latest edition of the Manual on Uniform Traffic Control Devices (MUTCD). All traffic control devices in the traveled way or clear zone shall be crashworthy (NCHRP Report 350 or MASH compliant). http://safety.fhwa.dot.gov/roadway_dept/policy_guide/road_hardware/rwd/

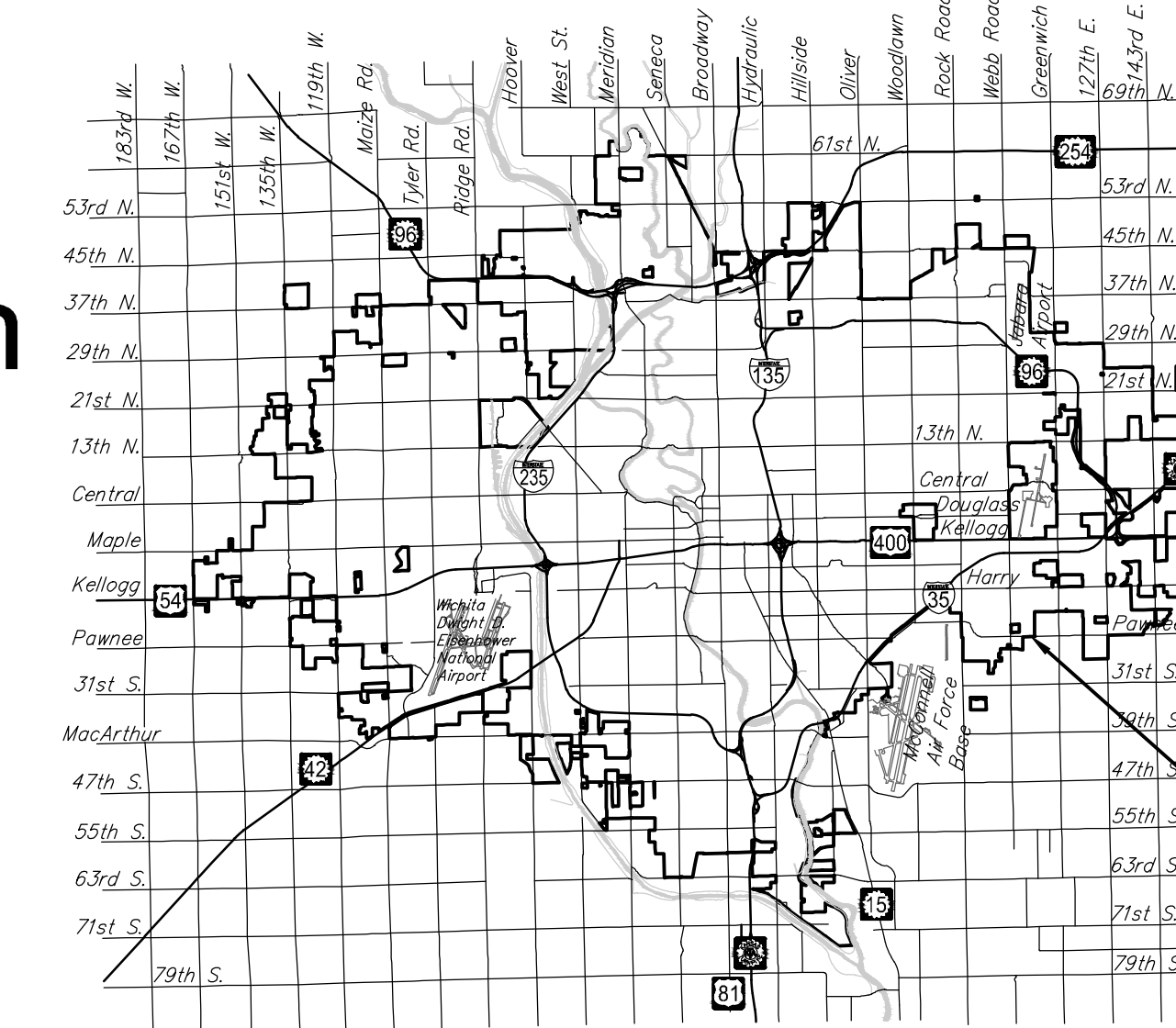
15. All construction equipment, including vehicles, materials, and debris, shall be stored outside of the clear zone. Where this cannot be achieved the contractor shall place appropriate signs, object identifiers, and/or barricades in compliance with the MUTCD.

16. Except when required for safety, traffic control shall not block any lanes or sidewalks when work is not being performed.

17. Contractor to remove all excess excavation from the site.

PAVING IMPROVEMENTS to serve Brentwood South Addition CITY OF WICHITA, KANSAS

Gary Janzen, P.E. City Engineer
 Project Number 472-85218
 O.C.A. NO. 766339

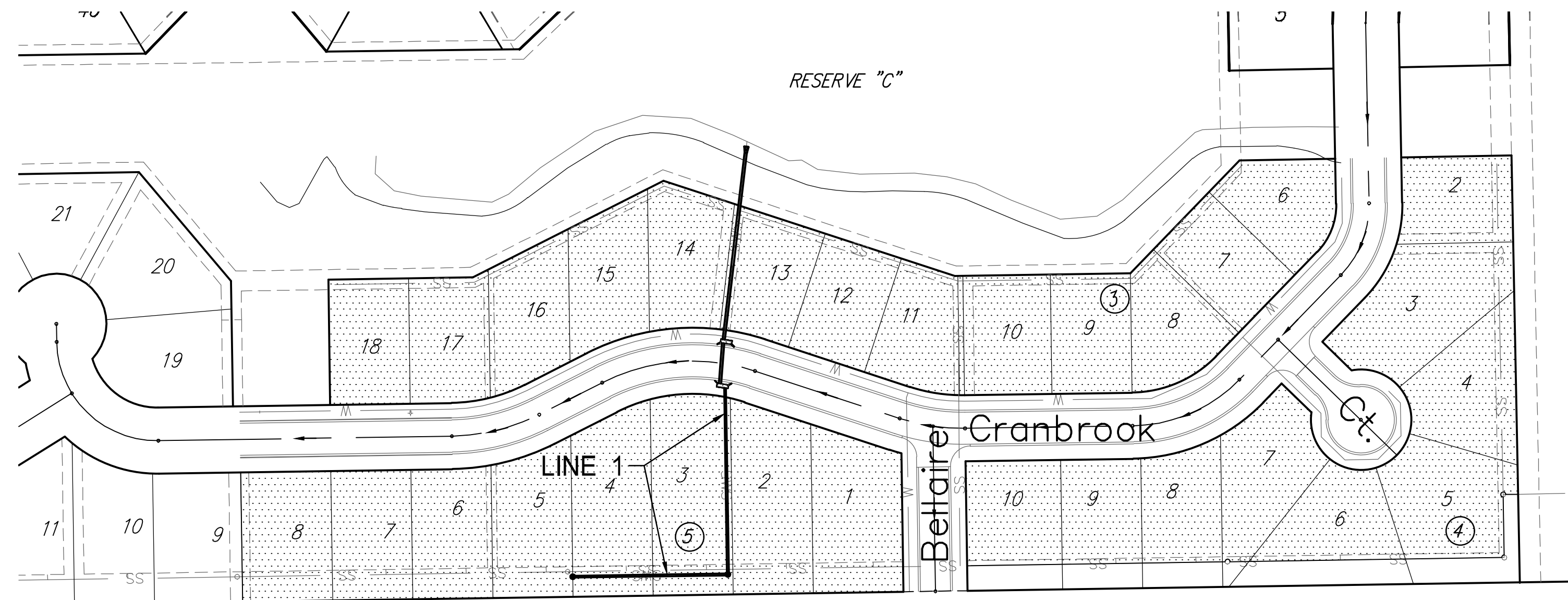


Vicinity Map

PROJECT LOCATION

Sheet Index

1. TITLE SHEET
2. 37' BK-BK DETAILS
3. 35' BK-BK DETAILS
4. 29' BK-BK DETAILS
5. TYPICAL STREET SECTIONS
6. CURB & GUTTER DETAILS
7. VALLEY GUTTER & RAMP DETAILS
8. SIGN DETAILS
9. 4 CORNER LOT GRADING PLAN
- 10.-12. CRANBROOK PLAN & PROFILES
13. BELLAIRE PLAN & PROFILE
14. CRANBROOK COURT DETAILS
- 15.-16. STORM WATER LINE 1 PLAN & PROFILE
17. TYPE 1A CURB INLET DETAILS
18. BACKYARD INLET DETAILS
19. EROSION CONTROL PLAN
- 20.-24. BMP DETAILS
25. SWS COORDINATES
26. ADDITION COORDINATES
- 27.-37. CROSS SECTIONS
38. FINAL PLAT



| EARTHWORK QUANTITIES | |
|----------------------|----------|
| Description | Cu. Yds. |
| Cut | 3155 |
| Fill | 1727 |
| Net | 1428 |

Benchmarks

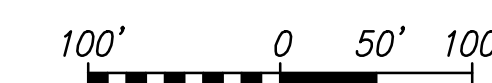
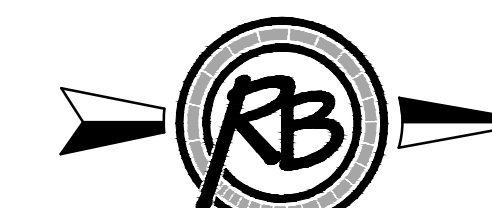
BENCHMARK:
 POINT #30
 CHISELED SQUARE ON THE TOP OF EAST CURB AT
 LOT LINE COMMON TO LOTS 9 & 10, BLOCK 5,
 BRENTWOOD SOUTH ADDITION.
 ELEVATION = 1382.11 (NAVD88)

BENCHMARK:
 POINT #31
 CHISELED SQUARE ON WEST END OF HEADWALL, 11'
 EAST AND 6' NORTH OF NORTHEAST CORNER OF LOT
 5, BLOCK 3, BRENTWOOD SOUTH ADDITION.
 ELEVATION = 1369.48 (NAVD88)

IMPROVEMENT DISTRICT

Earthwork quantities have not been adjusted for shrink/swell.

Excavation 3,160 C.Y.
 Compacted Fill 1,720 C.Y.



924 NORTH MAIN WICHITA, KANSAS 67203 P (316) 264-8008 F (316) 264-4621
 WWW.RBKANSAS.COM