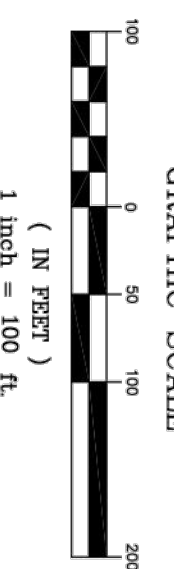
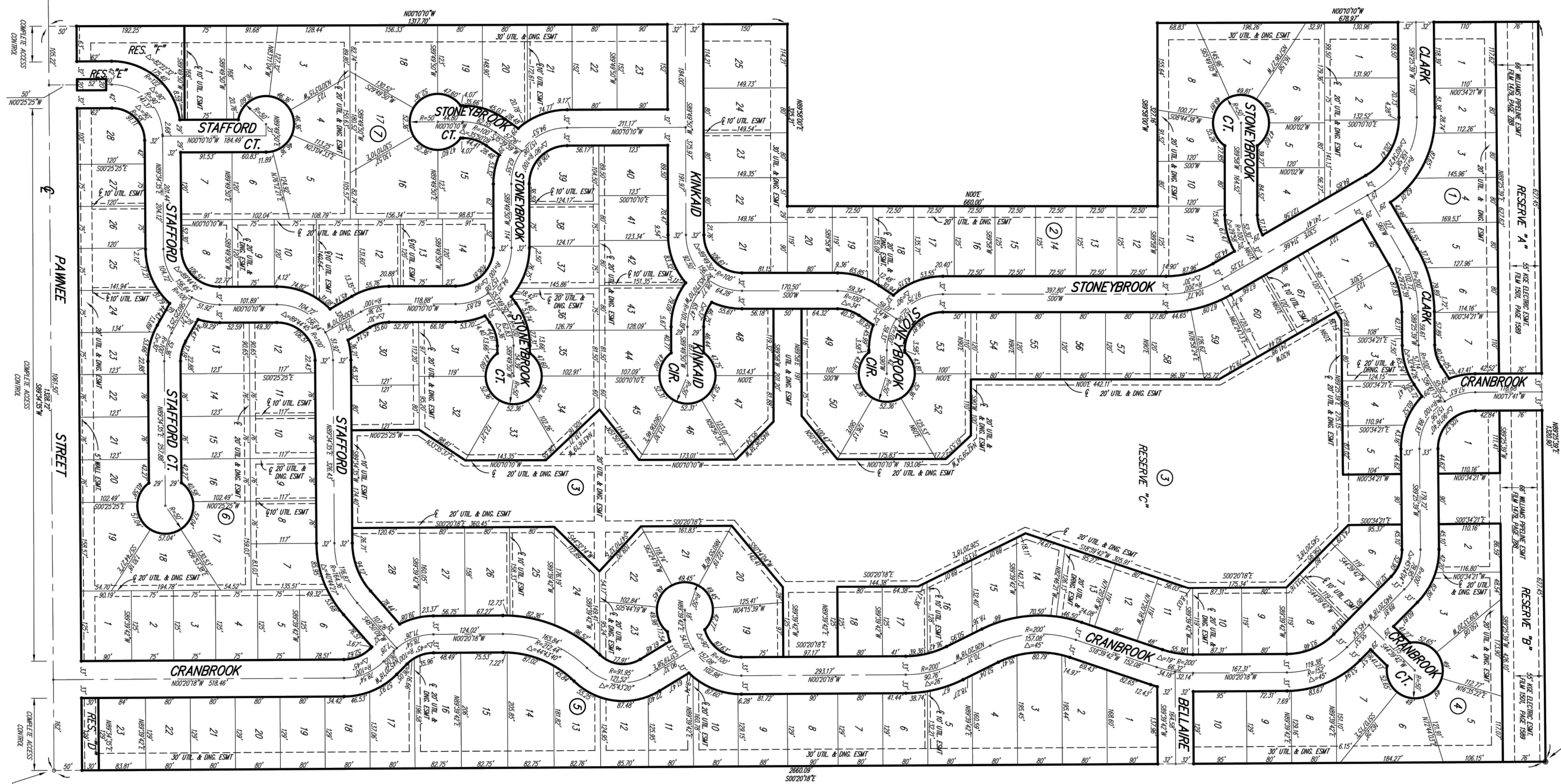


BRENTWOOD SOUTH ADDITION

WICHITA, SEDGWICK COUNTY, KANSAS



- △ = OIT OF MONTH CORNER (MABLE FOUND)
- = 1/2" REBAR W/ANCHOR CAP (FOUND)
- = 3/8" REBAR (FOUND)
- = 1/2" REBAR W/90° CAP (SET)

| BLK | LOT NO. | ELEVATION (A.G.M.D.) |
|-----|-------------|----------------------|
| 3 | 148 1-28 47 | 1389 |

REBAR MARKER - LOSS REBAR FOUND AT S. & 430' W. OF CENTERLINE INTERSECTION OF CRANBROOK & PANMEE ELEV=1389.25 (NOV)

REBAR MARKER - OIT OF MONTH CORNER (A.G.M.D.) 20' N & 54.5' S. OF CENTERLINE INTERSECTION ELEV=1389.60

Please contact Western Resources (or its successors) Electric Transmission Engineering Department (currently 785-575-8219) before conducting any proposed construction activities that could place people, equipment, or facilities within Western Resources' easement shown on this plat designated as Film 1501. Page 1589, dated December 29, 1994.