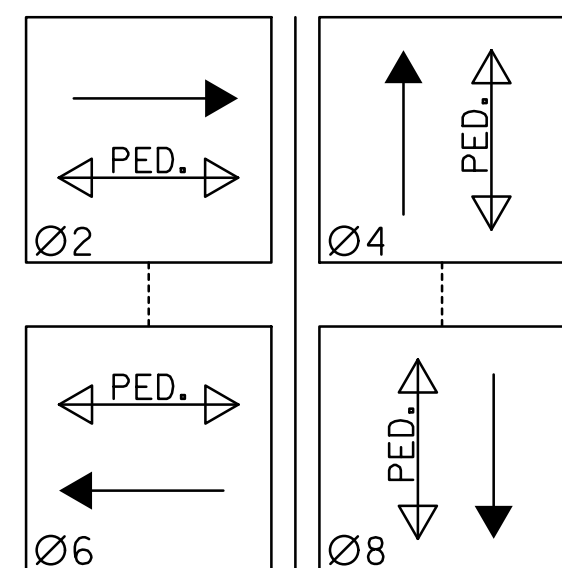


LEGEND

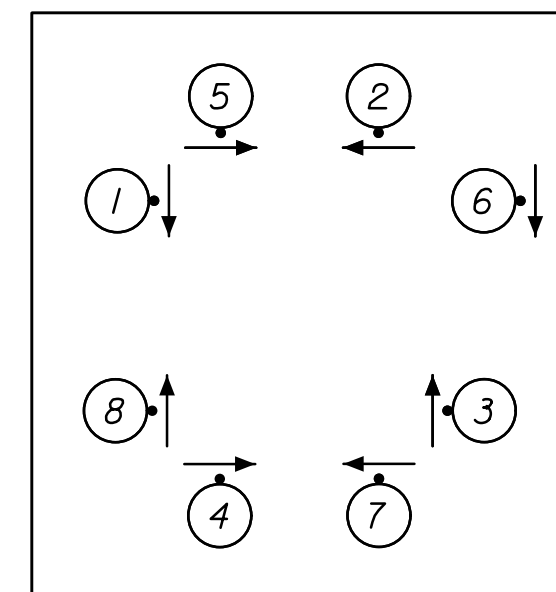
- METAL TRAFFIC SIGNAL POLE
- K PEDESTRIAN SIGNAL INDICATION
- A TRAFFIC SIGNAL INDICATION
- A TRAFFIC SIGNAL WITH BACKPLATE
- (5.0')
A MAST ARM SUSPENDED TRAFFIC SIGNAL
- 24" SERVICE BOX
- CONDUIT (TRENCHED)
- - - CONDUIT (BORED)
- ⊠ CONTROLLER AND CABINET (PAD MOUNTED)
- SECONDARY SERVICE POINT
- ⊗ DETECTOR NUMBER
- ▨ VEHICLE DETECTION ZONE
- ⊕ LUMINAIRE
- P.B. PEDESTRIAN PUSH BUTTON
- ⊗ POLE NUMBER
- SIGN
- ▶ VIDEO DETECTION CAMERA
- ⊠ SERVICE BOX NUMBER

SIGNAL PHASING

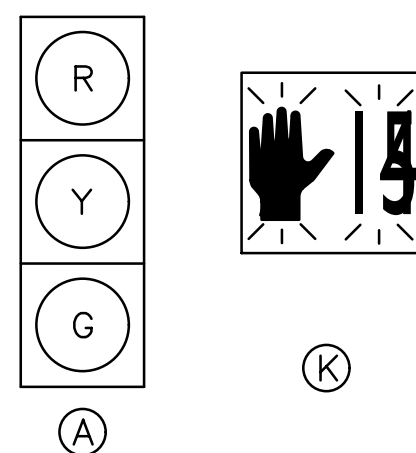


INDICATES NON-CONFLICTING PHASES THAT MAY TIME CONCURRENTLY. PEDESTRIAN INTERVALS TO ONLY OCCUR AFTER PUSHBUTTON ACTIVATION.

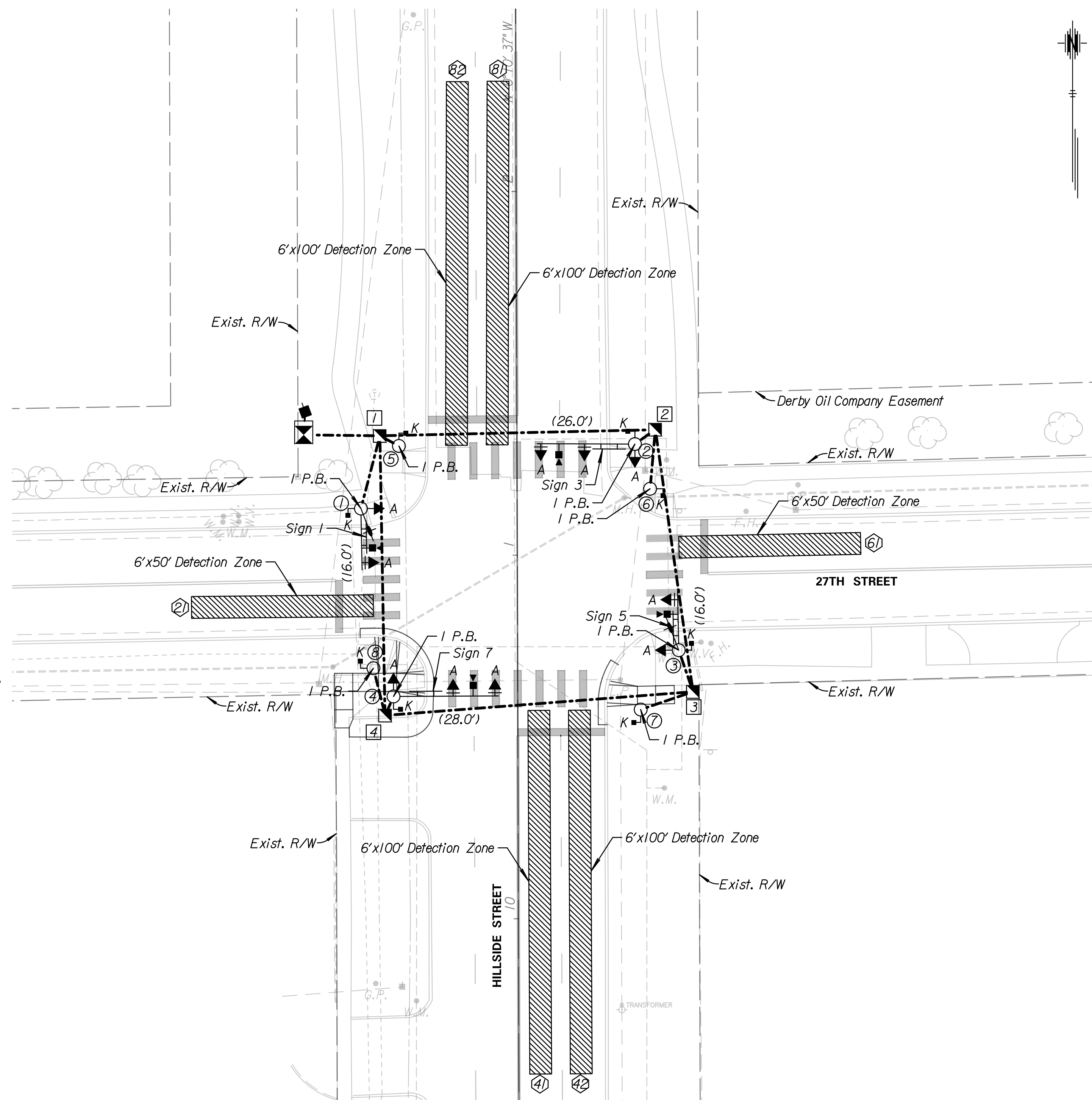
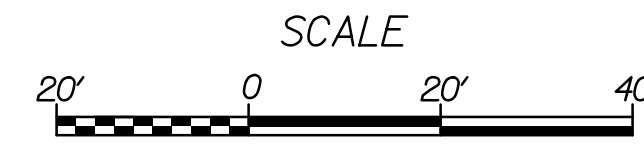
PEDESTRIAN PUSHBUTTON LAYOUT



SIGNAL FACES



NOTE: ALL LENSES SHALL BE 12" L.E.D. PEDESTRIAN COUNTDOWN SIGNALS SHALL BE USED.



NOTES

1. THE CITY SURVEYORS WILL STAKE LOCATIONS WHERE POLES, BOXES, AND THE CONTROLLER ARE TO BE INSTALLED. APPROVED STAKED LOCATIONS SHALL BE REVIEWED AND APPROVED BY THE ENGINEER PRIOR TO CONTRACTOR ORDERING TRAFFIC SIGNAL POLES AND HARDWARE.
2. SERVICE AND JUNCTION BOXES AND CONDUIT RUNS ARE APPROXIMATE AND MAY BE FIELD ADJUSTED TO CLEAR OBSTRUCTIONS AND FACILITATE WIRING, AS APPROVED BY THE ENGINEER.
3. VIDEO DETECTION ZONES SHALL BE CENTERED IN TRAFFIC LANES, EXCEPT AS INDICATED ON THE PLANS.
4. 27TH STREET SHALL OPERATE UNDER A 2-WAY STOP DURING CONSTRUCTION. HILLSIDE STREET SHALL OPERATE AS FREE FLOW.
5. ALL CONDUIT SHALL BE BORED UNDER EXISTING PAVEMENT AND SIDEWALK NOT BEING REPLACED. THIS WORK SHALL BE SUBSIDIARY TO THE BIT ITEM "TRAFFIC SIGNAL".
6. PROPOSED PAVEMENT MARKING & STATIONING ARE SCREENED FOR CLARITY. FOR MORE INFORMATION ON PAVEMENT MARKING SEE SHEET 9.
7. EXISTING FEATURES AND UTILITIES ARE SHOWN FROM AVAILABLE INFORMATION AND SHOULD BE CONSIDERED APPROXIMATE ONLY. IT IS THE RESPONSIBILITY OF THE CONTRACTOR TO VERIFY UTILITIES AND THEIR EXACT LOCATIONS PRIOR TO CONSTRUCTION. EXISTING UTILITIES ARE NOT PLANNED TO BE RELOCATED DURING CONSTRUCTION AND ARE TO REMAIN IN PLACE.
8. ALL CONDUIT RUNS SHALL BE STRAIGHT BETWEEN BOXES AND/OR FOUNDATIONS.
9. INSTALL METER AND OTHER ELECTRICAL COMPONENTS PER POWER POLE AND SPAN POLE ASSEMBLY SHEETS. ASSUMED PROPOSED POWER HOOKUP SHOWN.
10. METER ADDRESS IS 3154 E. 27TH STREET N, WICHITA, KS.
11. ALL COSTS ASSOCIATED WITH GRADING AND EARTHWORK ON THIS PROJECT SHALL BE SUBSIDIARY TO SITE CLEARING AND RESTORATION.
12. ALL EQUIPMENT SHALL BE NEW UNLESS SHOWN OTHERWISE ON THE PLANS. SIGNAL HEADS OR TRAFFIC SIGNS THAT CONFLICT WITH THE TRAFFIC CONTROL SHALL BE COVERED OR REMOVED.
13. LUMINAIRE ARMS SHALL BE ORIENTED OVER THE MAST ARM TYPICALLY. OTHERS (WESTAR) WILL MOUNT THE LUMINAIRES ON THE POLES. WIRING FOR POLES WILL BE AERIAL AND RUN FROM POLE TO POLE BY OTHERS (WESTAR). CONTRACTOR SHALL PROVIDE LUMINAIRE ARMS. SEE STEEL SIGNAL POLE ASSEMBLY DETAILS SHEET.
14. EXISTING STOP SIGNS, POLES AND FOUNDATIONS SHALL BE REMOVED IN SALVAGABLE CONDITION ONCE SIGNAL SWITCHOVER HAS OCCURRED. EXISTING SIGNS SHALL BECOME THE PROPERTY OF THE CITY AND DELIVERED TO 1801 S. MCLEAN. PAYMENT FOR THIS WORK SHALL BE SUBSIDIARY TO THE BID ITEM "TRAFFIC SIGNALIZATION".

POLE/CONTROLLER LOCATIONS

POLE NO.	STATION	OFFSET	NORTHING	EASTING
1	11+12.96	42.96' Lt.	1,703,105.9655	1,659,588.9918
2	11+30.44	32.45' Rt.	1,703,123.6858	1,659,664.3435
3	10+73.73	44.32' Rt.	1,703,067.0126	1,659,676.3934
4	10+61.25	34.16' Lt.	1,703,054.2833	1,659,597.9512
5	11+30.12	32.46' Lt.	1,703,123.1646	1,659,599.4350
6	11+18.15	36.59' Rt.	1,703,111.4002	1,659,668.5225
7	10+57.43	33.81' Rt.	1,703,050.6816	1,659,665.9314
8	10+69.02	39.66' Lt.	1,703,062.0399	1,659,592.4279
CONT.	11+33.25	58.64' Lt.	1,703,126.2086	1,659,573.2483

SERVICE BOX LOCATIONS

BOX NO.	STATION	OFFSET	NORTHING	EASTING
1	11+32.94	37.68' Lt.	1,703,125.9663	1,659,594.2071
2	11+34.44	38.08' Rt.	1,703,127.6981	1,659,669.9618
3	10+62.29	48.22' Rt.	1,703,055.5765	1,659,680.3314
4	10+56.04	36.46' Lt.	1,703,049.0676	1,659,595.6687

SIGN LOCATIONS

POLE NO.	TYPE	SPACING ON ARM
1	ST. NAME	7.0'
2	ST. NAME	9.0'
3	ST. NAME	6.0'
4	ST. NAME	10.0'

TranSystems
245 NORTH WACO
SUITE 222
WICHITA, KANSAS 67202
PHONE: 316-303-3000
FAX: 316-303-0156

CONSULTANTS:

27TH STREET & HILLSIDE STREET
SIGNALIZATION IMPROVEMENTS

REVISIONS:	DESCRIPTION	DATE	MARK

PROJ NO: P125130050
SCALE: 1"=20'
DATE: 9/29/2015
DESIGNED BY: TAU
DRAWN BY: TAU
CHECKED BY: SGE

SHEET TITLE:
27TH & HILLSIDE
SIGNALIZATION IMPROVEMENTS
SIGNAL PLAN

SHEET NO.
10
SHEET 10 OF 26