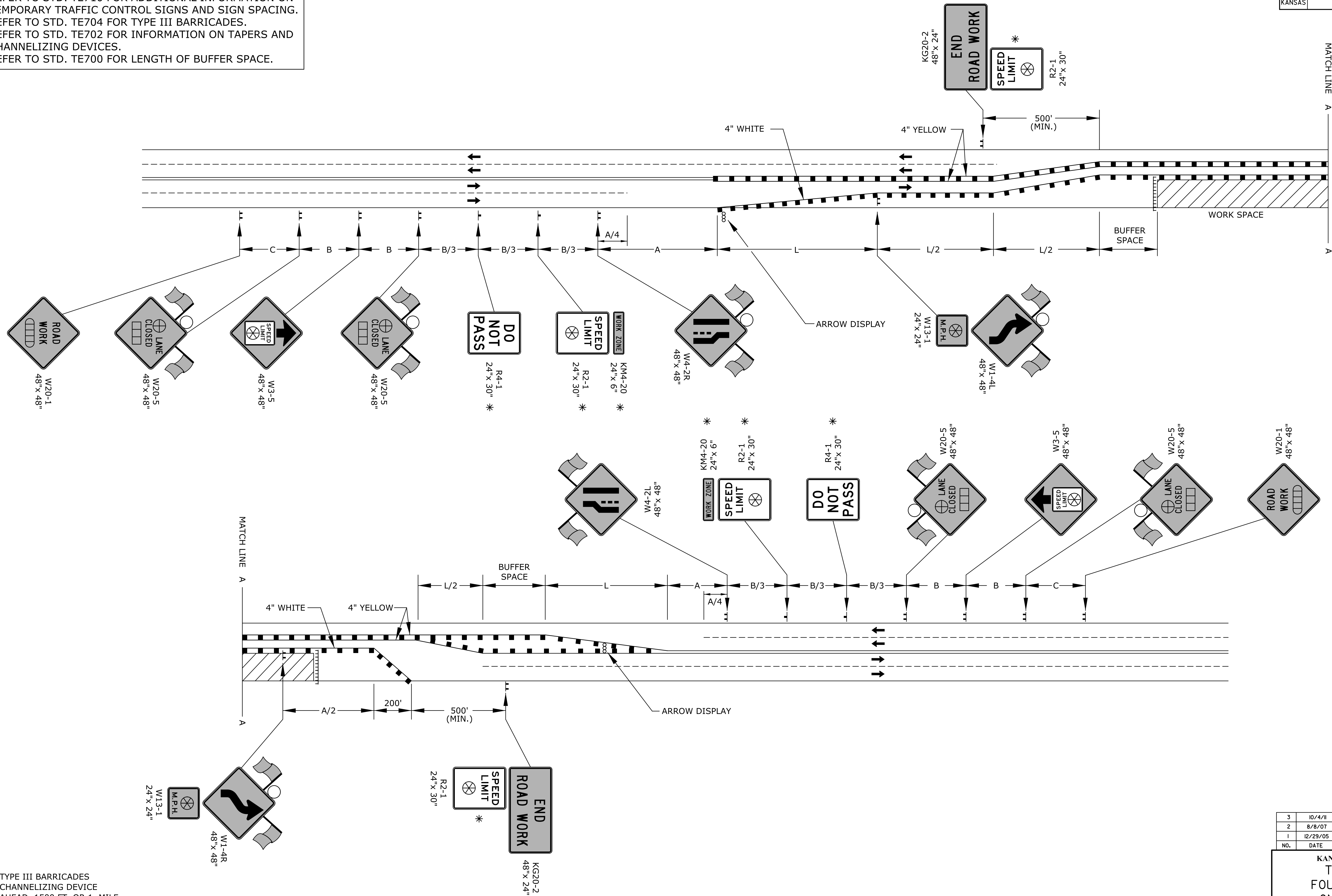


STATE	PROJECT NO.	YEAR	SHEET NO.	TOTAL SHEETS
KANSAS	PI25130050	2015	26	26

REFER TO STD. TE710 FOR ADDITIONAL INFORMATION ON TEMPORARY TRAFFIC CONTROL SIGNS AND SIGN SPACING. REFER TO STD. TE704 FOR TYPE III BARRICADES. REFER TO STD. TE702 FOR INFORMATION ON TAPERS AND CHANNELIZING DEVICES. REFER TO STD. TE700 FOR LENGTH OF BUFFER SPACE.



Drawn By : Road  
File : te748.dgn  
Plotted : 29-SEP-2015 14:20

- TYPE III BARRICADES
- CHANNELIZING DEVICE
- AHEAD, 1500 FT, OR 1 MILE
- AHEAD, 1000 FT, 1500 FT, OR 1/2 MILE
- RIGHT OR LEFT
- SPEED TO BE DETERMINED BY THE ENGINEER
- TYPE "A" LOW INTENSITY WARNING LIGHT

\* FOR SPEEDS GREATER THAN 45 MPH USE FREEWAY / EXPRESSWAY SIZE SIGNS.

NO.	DATE	REVISIONS	BY	APP'D
3	10/4/11	Adjusted R2-1 and KM4-20 Sign Sizes	J.A.M.	K.P.
2	8/8/07	Sign Spacing Change	M.B.	A.A.A.
1	12/29/05	M4-20 Changed To KM4-20	M.B.	A.A.A.

KANSAS DEPARTMENT OF TRANSPORTATION  
TYPICAL TRAFFIC CONTROL  
FOUR-LANE UNDIVIDED HIGHWAY  
ONE-HALF ROADWAY CLOSED

TE748

DESIGNED	B.A.H.	QUANTITIES	TRACED
DESIGN CK.	DETAIL CK.	QUAN. CK.	TRACE CK.

FDOT Graphics Certified 10-23-2012

FDOT Graphics Certified