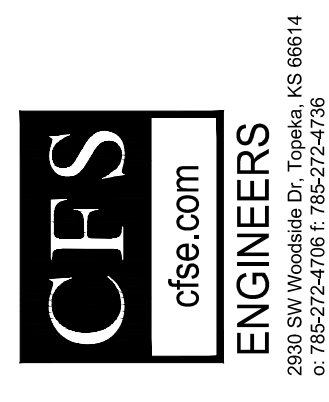


SEAL:

DATE: 11/11/2014
 DESIGNED BY: PW
 DRAWN BY: JH
 CHECKED BY: PW



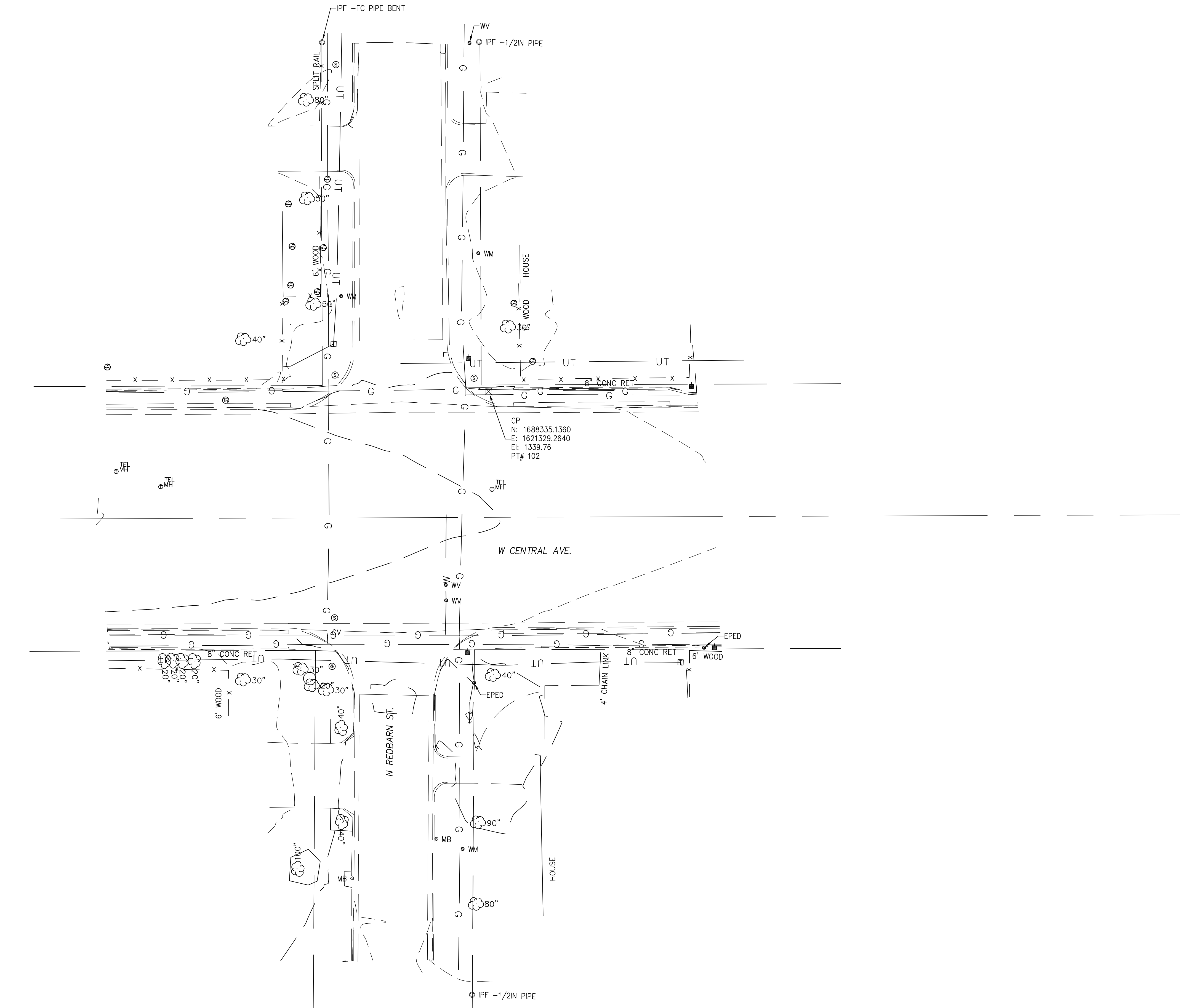
CITY OF WICHITA, KANSAS
 WOODCHUCK
 BICYCLE BOULEVARD

REVISIONS

PROJECT NUMBER
 87 TE-0617-01

FINAL
 PLANS

SHEET NUMBER:
 PS451



CONTROL

All DATUM OBSERVED FROM NGS OPUS-RS SOLUTION
 Horizontal Datum: NAD83 Kansas South 1502 State Plane Coordinates (at ground)
 Vertical Datum: NAVD88 (Computed using GEOD12A)

- CP 102 SET "X" CUT ON SIDEWALK
 N: 1688335.136 E: 1621329.264 EL: 1339.76
- | | |
|--------------------------------------|------------|
| 1) TO CL E-W ASPHALT RD (CENTRAL) | 48.5' S |
| 2) TO CL N-S ASPHALT RD (REDBARN) | 33.0' W |
| 3) TO SW COR 6' WOOD FENCE | 12.92' ENE |
| 4) TO SPIKE AND WASHER IN POWER POLE | 14.88' NW |

- CP 103 CP 102 SET "X" CUT ON SIDEWALK
 N: 1688518.094 E: 1621270.711 EL: 1340.36
- | | |
|--------------------------------------|------------|
| 1) TO CL N-S ASPHALT RD (REDBARN) | 20.0' E |
| 2) TO CL E-W ASPHALT RD (COTTONTAIL) | 22.5' S |
| 3) TO SE COR TEL BOX | 19.95' WSW |
| 4) TO NE COR TEL BOX | 18.78' W |