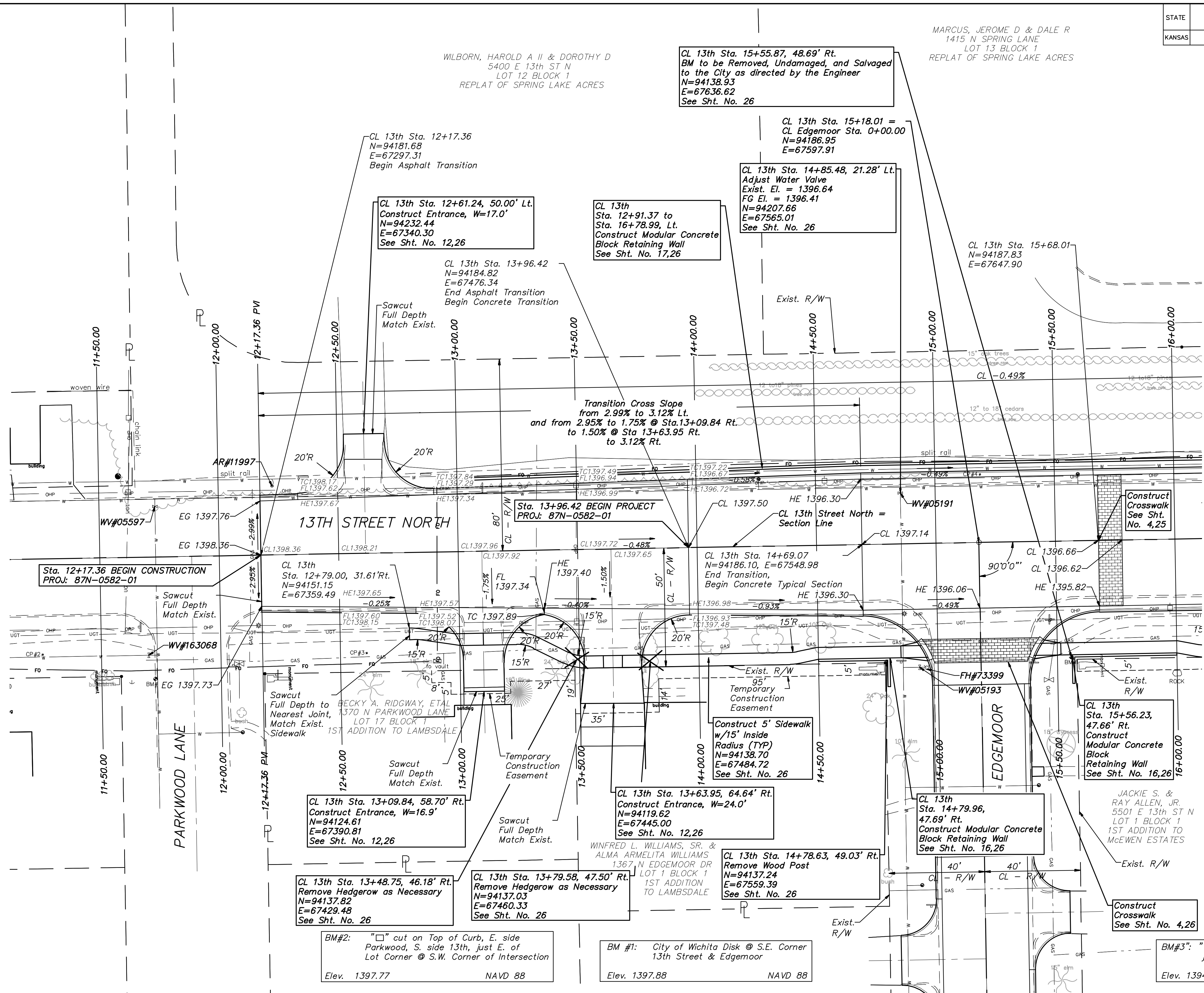
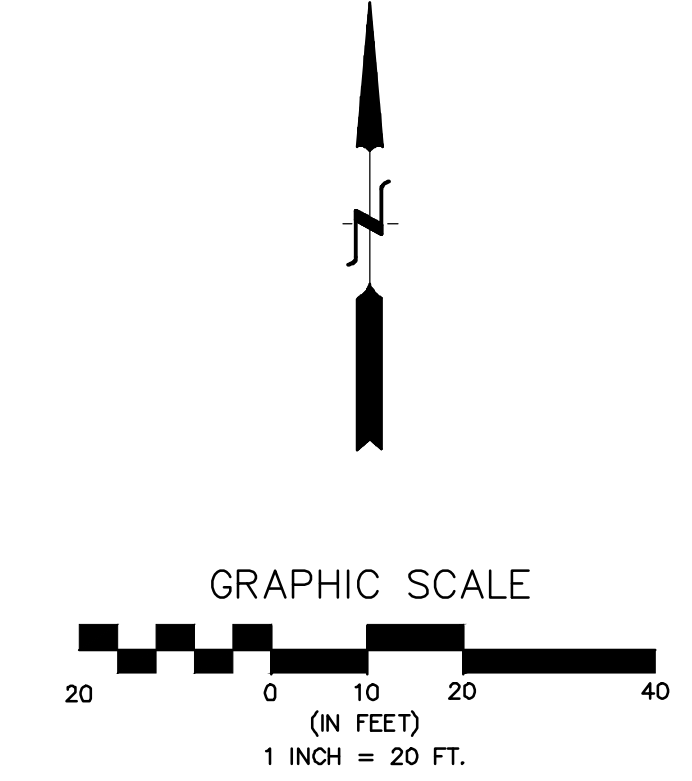


STATE	PROJECT NO.	YEAR	SHEET NO.	TOTAL SHEETS
KANSAS	87N-0582-01	2015	5	59

MARCUS, JEROME D & DALE R  
1415 N SPRING LANE  
LOT 13 BLOCK 1  
REPLAT OF SPRING LAKE ACRES

WILBORN, HAROLD A II & DOROTHY D  
5400 E 13th ST N  
LOT 12 BLOCK 1  
REPLAT OF SPRING LAKE ACRES



Sta. 12+17.36 BEGIN CONSTRUCTION  
PROJ: 87N-0582-01

Transition Cross Slope  
from 2.99% to 3.12% Lt.  
and from 2.95% to 1.75% @ Sta.13+09.84 Rt.  
to 1.50% @ Sta 13+63.95 Rt.  
to 3.12% Rt.

Sta. 13+96.42 BEGIN PROJECT  
PROJ: 87N-0582-01

CL 13th Sta. 13+09.84, 58.70' Rt.  
Construct Entrance, W=16.9'  
N=94124.61  
E=67390.81  
See Sht. No. 12,26

CL 13th Sta. 13+48.75, 46.18' Rt.  
Remove Hedgerow as Necessary  
N=94137.82  
E=67429.48  
See Sht. No. 26

CL 13th Sta. 13+79.58, 47.50' Rt.  
Remove Hedgerow as Necessary  
N=94137.03  
E=67460.33  
See Sht. No. 26

CL 13th Sta. 13+63.95, 64.64' Rt.  
Construct Entrance, W=24.0'  
N=94119.62  
E=67445.00  
See Sht. No. 12,26

CL 13th Sta. 14+78.63, 49.03' Rt.  
Remove Wood Post  
N=94137.24  
E=67559.39  
See Sht. No. 26

Construct 5' Sidewalk  
w/15' Inside  
Radius (TYP)  
N=94138.70  
E=67484.72  
See Sht. No. 26

CL 13th  
Sta. 14+79.96,  
47.69' Rt.  
Construct Modular Concrete  
Block Retaining Wall  
See Sht. No. 16,26

CL 13th  
Sta. 15+56.23,  
47.66' Rt.  
Construct  
Modular Concrete  
Block  
Retaining Wall  
See Sht. No. 16,26

Construct  
Crosswalk  
See Sht. No. 4,26

BM#2: "□" cut on Top of Curb, E. side  
Parkwood, S. side 13th, just E. of  
Lot Corner @ S.W. Corner of Intersection  
Elev. 1397.77 NAVD 88

BM #1: City of Wichita Disk @ S.E. Corner  
13th Street & Edgemoor  
Elev. 1397.88 NAVD 88

BM#3: "□" cut on S.E. Corner of Box Culvert  
just W. of Kevin St. Top Headwall  
Elev. 1394.23 NAVD 88

NOTE:  
Monuments at Parkwood Lane,  
Edgemoor, and Spring Lane to be  
protected from damage during  
construction at all times.

13TH & EDGEMOOR  
PLAN  
CITY OF WICHITA, KANSAS  
GARY JANZEN, P.E. - CITY ENGINEER

POE & ASSOCIATES, INC.  
CONSULTING ENGINEERS  
544 West Douglas Avenue | Wichita, KS 67203  
Phone 316.665.4114 | FAX 316.665.4444

FINAL  
Engineer: J. DICKMAN  
Designer: J. UNRUH  
Dwg. P.: 102091102091-Base  
Job No.: 87N-0582-01  
Date: 8/31/2015

Sheet 5 of 59