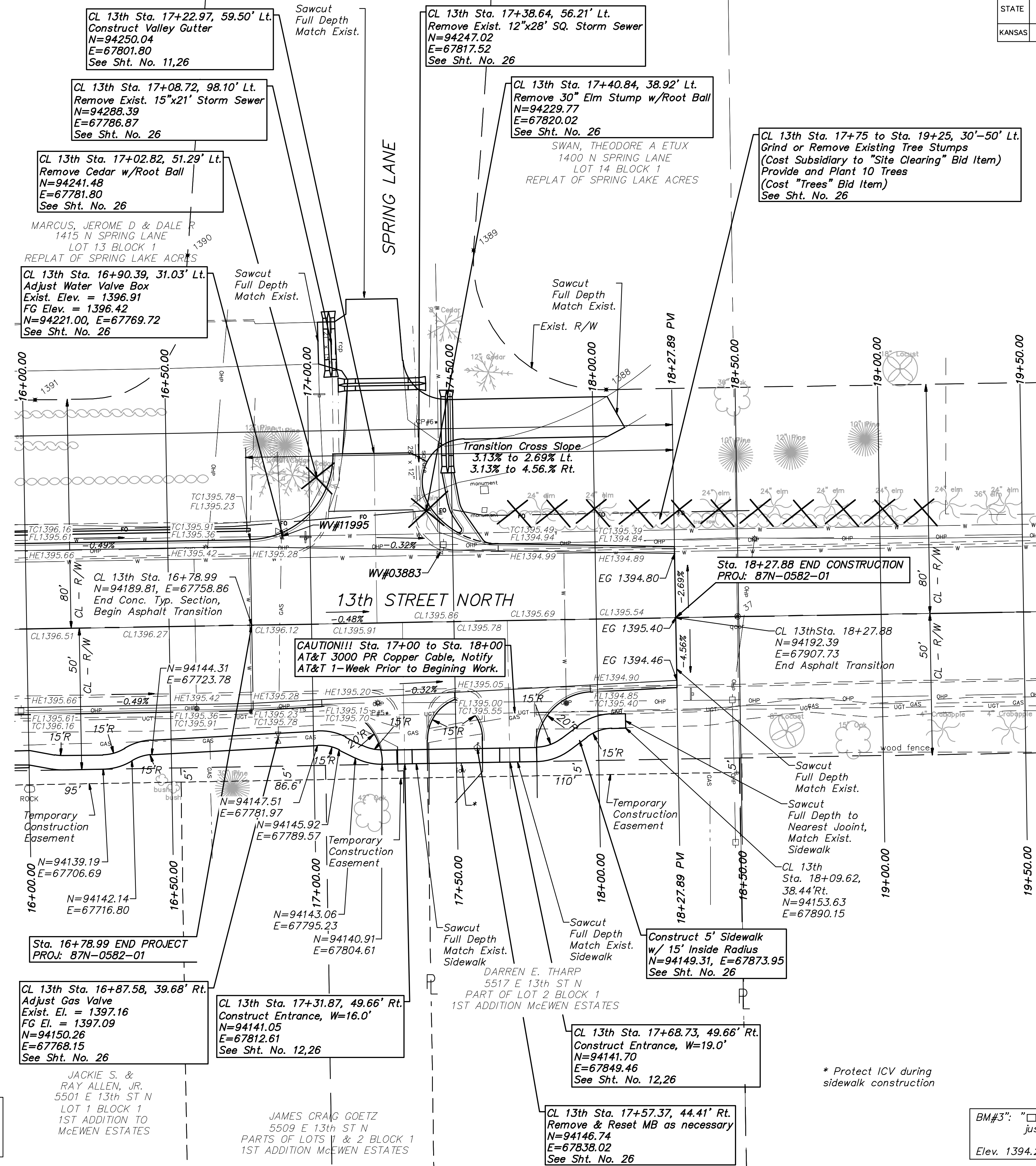
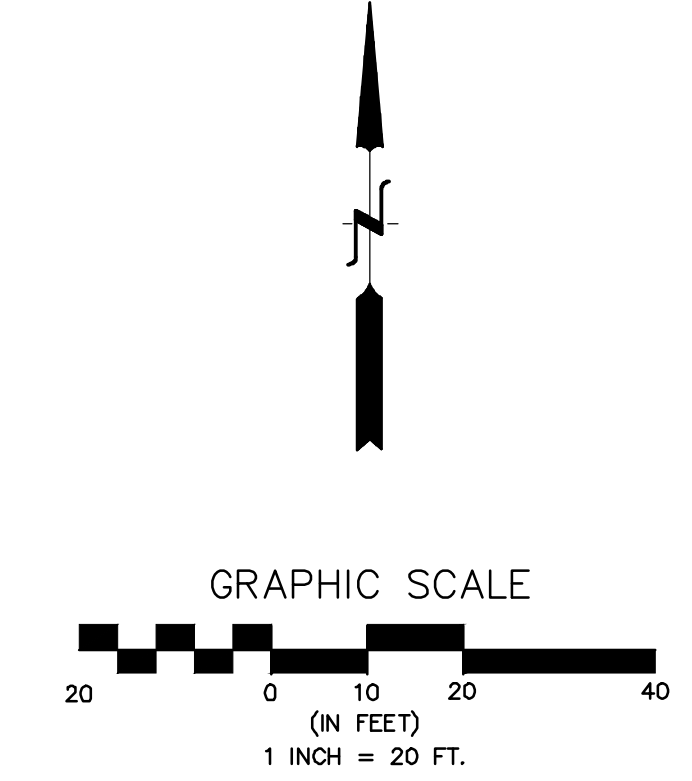


STATE	PROJECT NO.	YEAR	SHEET NO.	TOTAL SHEETS
KANSAS	87N-0582-01	2015	6	59



CL 13th Sta. 17+22.97, 59.50' Lt.
Construct Valley Gutter
N=94250.04
E=67801.80
See Sht. No. 11,26

CL 13th Sta. 17+08.72, 98.10' Lt.
Remove Exist. 15"x21' Storm Sewer
N=94288.39
E=67786.87
See Sht. No. 26

CL 13th Sta. 17+02.82, 51.29' Lt.
Remove Cedar w/Root Ball
N=94241.48
E=67781.80
See Sht. No. 26

MARCUS, JEROME D & DALE R
1415 N SPRING LANE
LOT 13 BLOCK 1
REPLAT OF SPRING LAKE ACRES

CL 13th Sta. 16+90.39, 31.03' Lt.
Adjust Water Valve Box
Exist. Elev. = 1396.91
FG Elev. = 1396.42
N=94221.00, E=67769.72
See Sht. No. 26

CL 13th Sta. 17+38.64, 56.21' Lt.
Remove Exist. 12"x28' SQ. Storm Sewer
N=94247.02
E=67817.52
See Sht. No. 26

CL 13th Sta. 17+40.84, 38.92' Lt.
Remove 30" Elm Stump w/Root Ball
N=94229.77
E=67820.02
See Sht. No. 26

SWAN, THEODORE A ETUX
1400 N SPRING LANE
LOT 14 BLOCK 1
REPLAT OF SPRING LAKE ACRES

CL 13th Sta. 17+75 to Sta. 19+25, 30'-50' Lt.
Grind or Remove Existing Tree Stumps
(Cost Subsidiary to "Site Clearing" Bid Item)
Provide and Plant 10 Trees
(Cost "Trees" Bid Item)
See Sht. No. 26

CAUTION!!! Sta. 17+00 to Sta. 18+00
AT&T 3000 PR Copper Cable, Notify
AT&T 1-Week Prior to Beginning Work.

Sta. 18+27.88 END CONSTRUCTION
PROJ: 87N-0582-01

Sta. 16+78.99 END PROJECT
PROJ: 87N-0582-01

CL 13th Sta. 16+87.58, 39.68' Rt.
Adjust Gas Valve
Exist. El. = 1397.16
FG El. = 1397.09
N=94150.26
E=67768.15
See Sht. No. 26

CL 13th Sta. 17+31.87, 49.66' Rt.
Construct Entrance, W=16.0'
N=94141.05
E=67812.61
See Sht. No. 12,26

CL 13th Sta. 17+68.73, 49.66' Rt.
Construct Entrance, W=19.0'
N=94141.70
E=67849.46
See Sht. No. 12,26

CL 13th Sta. 17+57.37, 44.41' Rt.
Remove & Reset MB as necessary
N=94146.74
E=67838.02
See Sht. No. 26

Construct 5' Sidewalk
w/ 15' Inside Radius
N=94149.31, E=67873.95
See Sht. No. 26

BM #1: City of Wichita Disk @ S.E. Corner
13th Street & Edgemoor
Elev. 1397.88 NAVD 88

BM#2: "□" cut on Top of Curb, E. side
Parkwood, S. side 13th, just E. of
Lot Corner @ S.W. Corner of Intersection
Elev. 1397.77 NAVD 88

JACKIE S. &
RAY ALLEN, JR.
5501 E 13th ST N
LOT 1 BLOCK 1
1ST ADDITION TO
McEWEN ESTATES

JAMES CRAIG GOETZ
5509 E 13th ST N
PARTS OF LOTS 1 & 2 BLOCK 1
1ST ADDITION McEWEN ESTATES

* Protect ICV during
sidewalk construction

NOTE:
Monuments at Parkwood Lane,
Edgemoor, and Spring Lane to be
protected from damage during
construction at all times.

BM#3: "□" cut on S.E. Corner of Box Culvert
just W. of Kevin St. Top Headwall
Elev. 1394.23 NAVD 88

13TH & EDGEMOOR
PLAN
CITY OF WICHITA, KANSAS
GARY JANZEN, P.E. - CITY ENGINEER

POE & ASSOCIATES, INC.
CONSULTING ENGINEERS
544 West Douglas Avenue | Wichita, KS 67203
Phone: 316.665.4114 | FAX: 316.665.4444

Professional Engineer Seal for Darren E. Tharp, No. 18137, State of Kansas.

Engineer: J. DICKMAN
Designer: J. UNRUH
Dwg. P.: 102091-Base
Job No.: 87N-0582-01
Date: 8/31/2015

Sheet 6 of 59