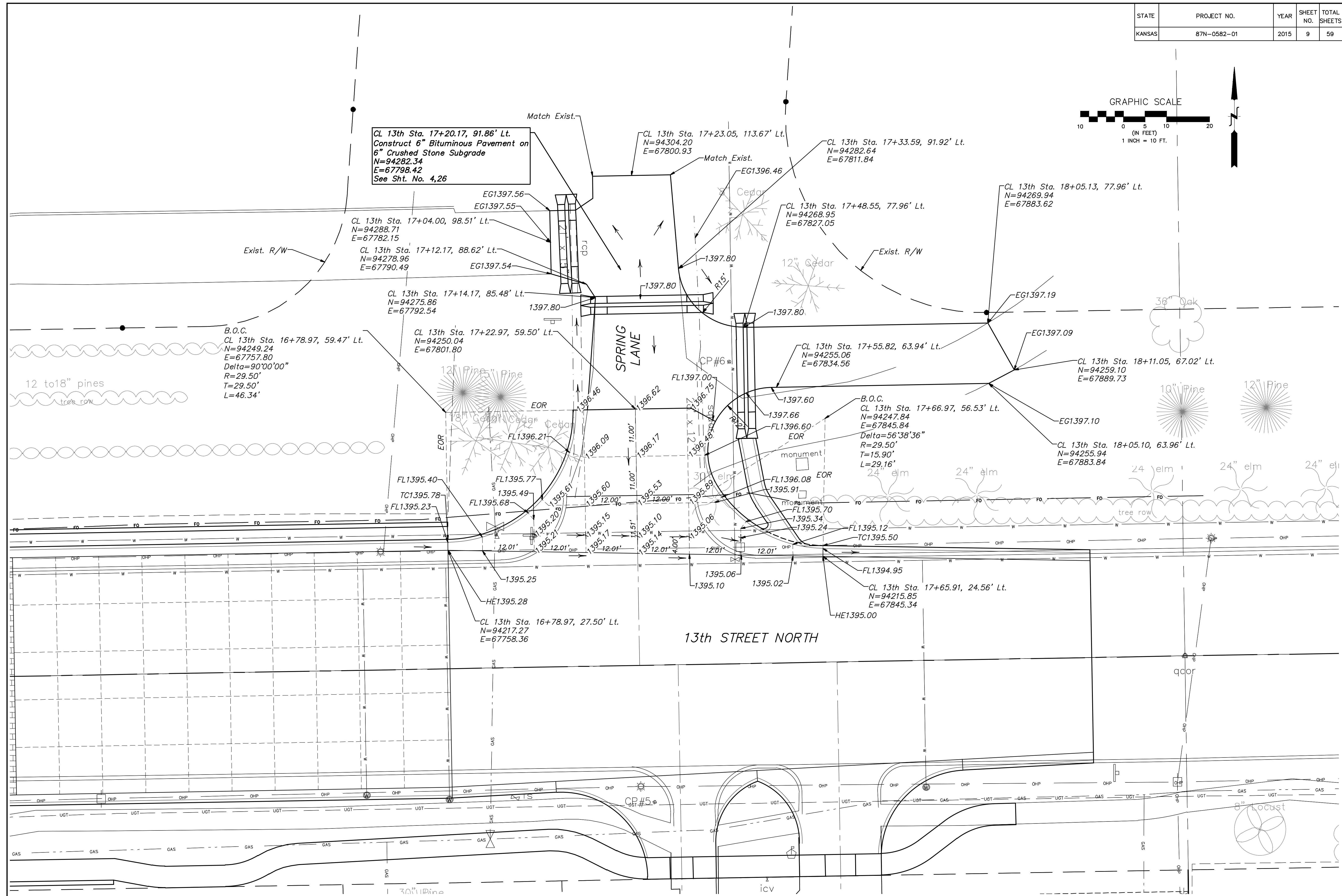
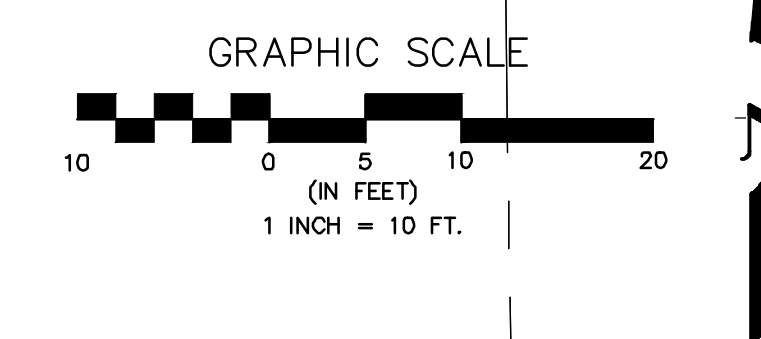


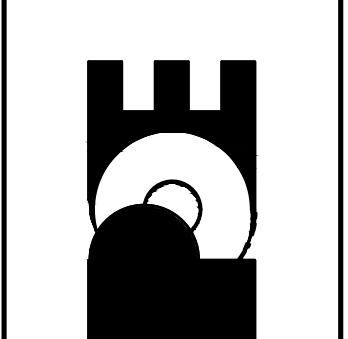
STATE	PROJECT NO.	YEAR	SHEET NO.	TOTAL SHEETS
KANSAS	87N-0582-01	2015	9	59



No.	Date	By	Approved	Revision

13TH & EDGEWOOD
INTERSECTION PLAN
CITY OF WICHITA, KANSAS
 GARY JANZEN, P.E. - CITY ENGINEER

POE & ASSOCIATES, INC.
 CONSULTING ENGINEERS
 344 West Douglas Avenue | Wichita, KS 67203
 Phone 316.685.4114 | FAX 316.685.4444



FINAL
 Engineer: J. DICKMAN
 Designer: J. UNRUH
 Dwg. P.: 102091-102091-Base
 Job No.: 87N-0582-01
 Date: 8/31/2015