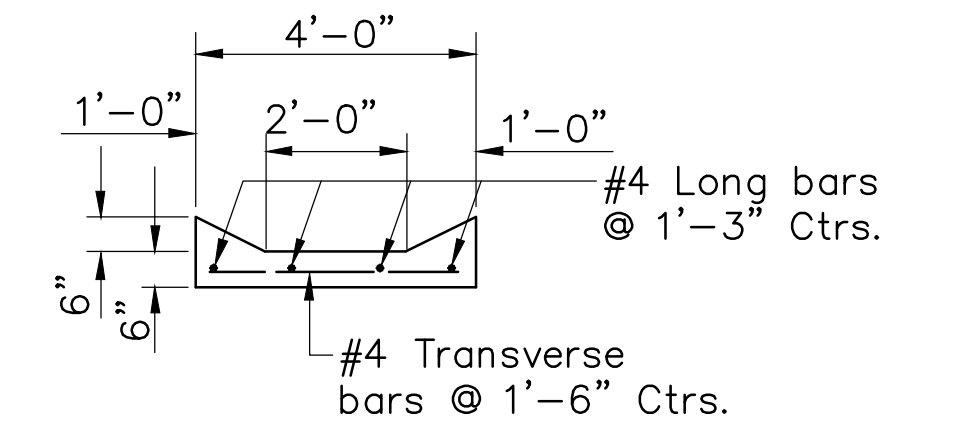
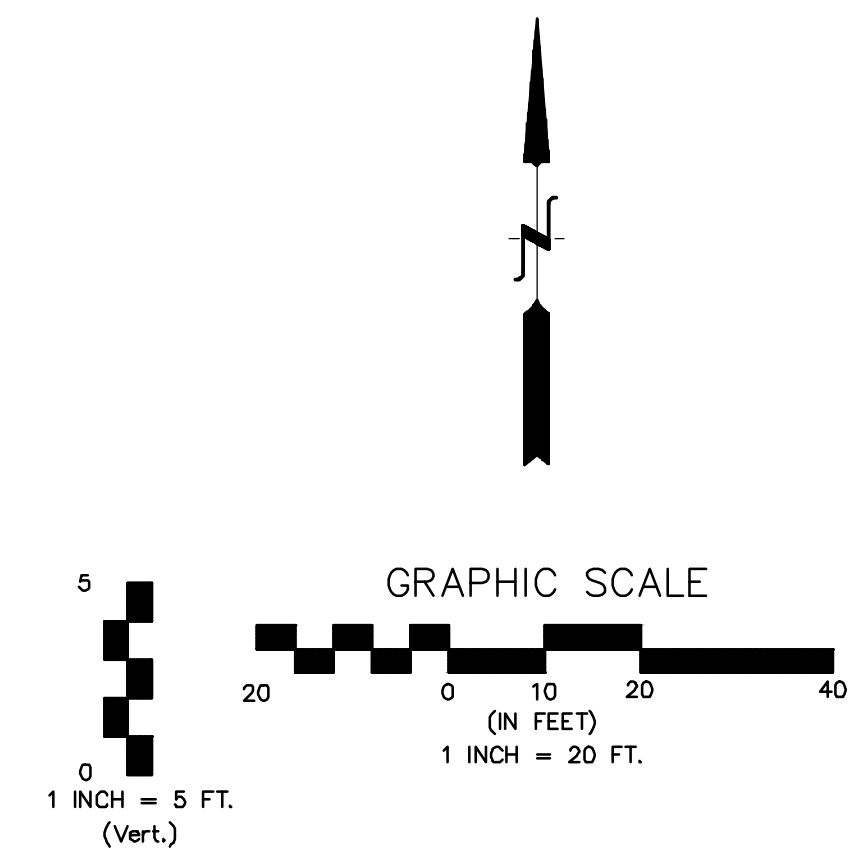
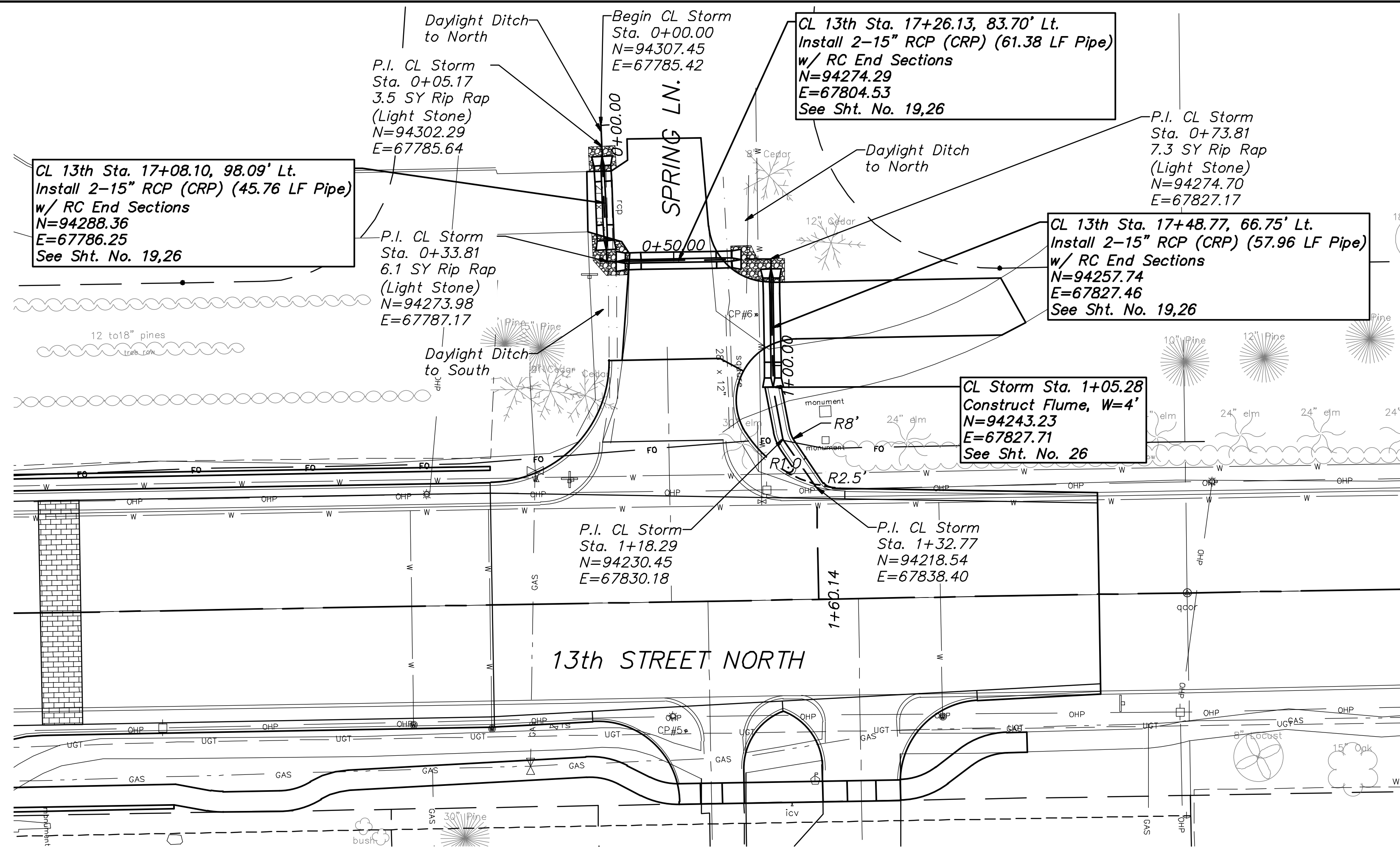
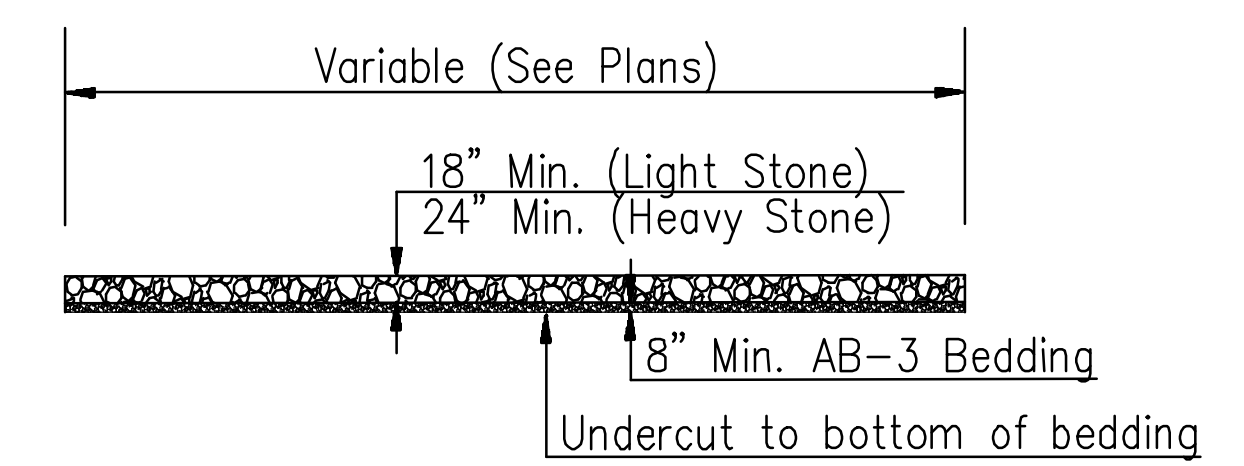


STATE	PROJECT NO.	YEAR	SHEET NO.	TOTAL SHEETS
KANSAS	87N-0582-01	2015	18	59

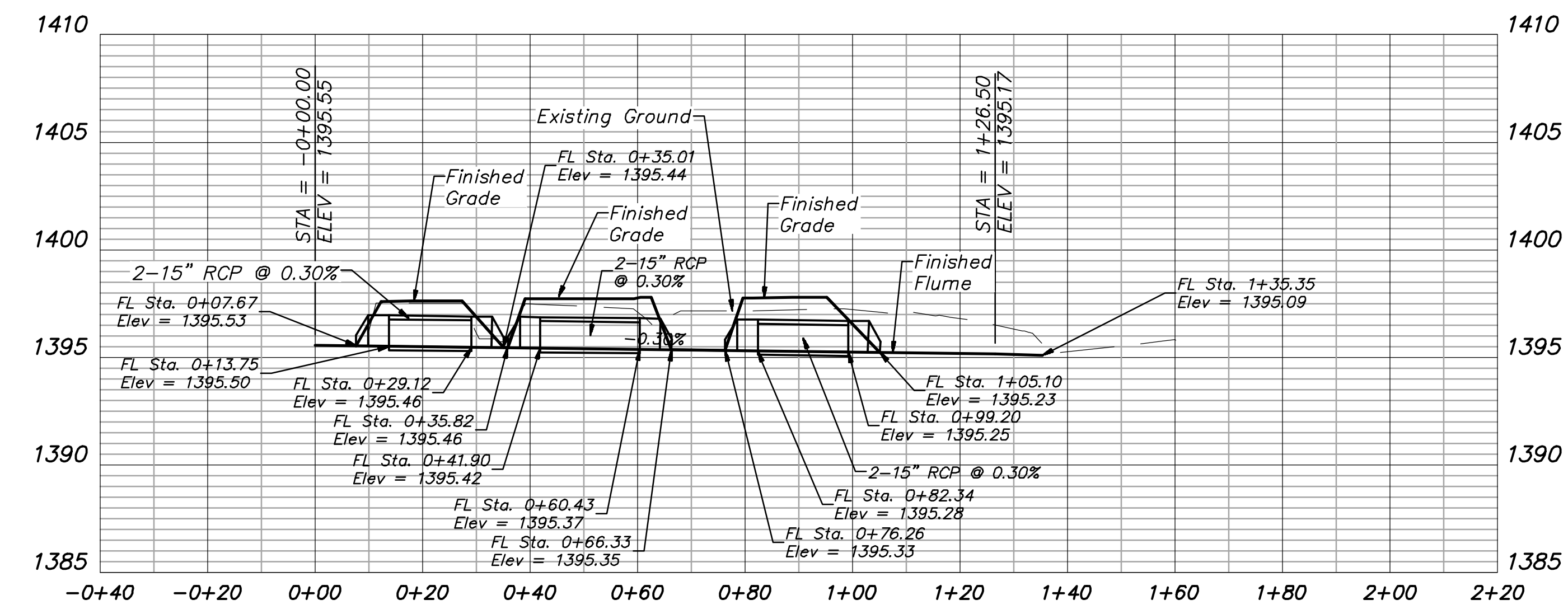


FLUME SECTION



Light Stone Rip Rap shall be used (Bedding shall be subsidiary to rip rap cost)

RIP RAP DETAIL
(No Scale)



STATE	PROJECT NO.	YEAR	SHEET NO.	TOTAL SHEETS
KANSAS	87N-0582-01	2015	18	59

No.	Date	By	Approved	Revision

13TH & EDGEWOOD
STORM SEWER
CITY OF WICHITA, KANSAS
GARY JANZEN, P.E. - CITY ENGINEER

POE & ASSOCIATES, INC.
CONSULTING ENGINEERS
544 West Douglas Avenue | Wichita, KS 67203
Phone 316.685.4114 | FAX 316.685.4444

FINAL
Engineer: J. DICKMAN
Designer: J. UNRUH
Dwg. P.: 102091\102091-Base
Job No.: 87N-0582-01
Date: 8/31/2015