

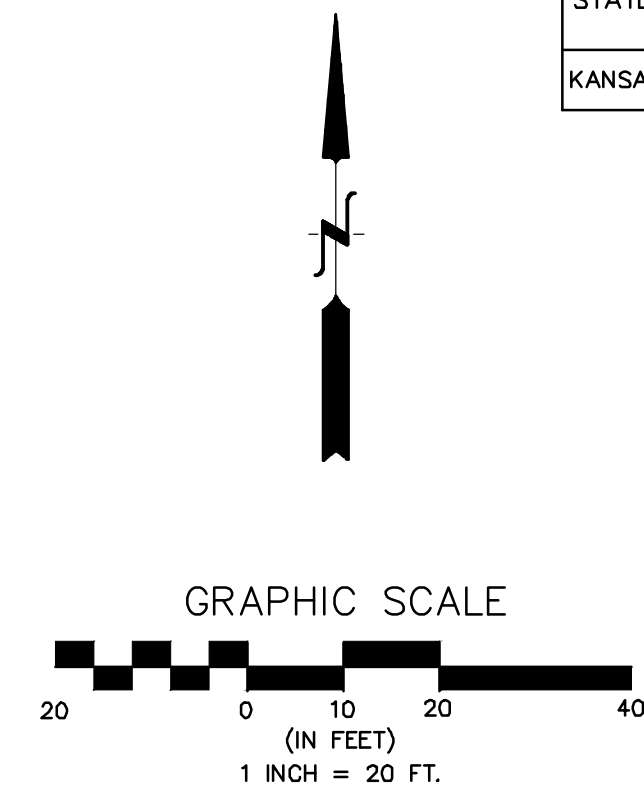
STATE	PROJECT NO.	YEAR	SHEET NO.	TOTAL SHEETS
KANSAS	87N-0582-01	2015	27	59

NOTES

- Contractor shall notify Traffic Engineering Department two weeks prior to start of construction.
- Traffic to be carried through construction. See Construction Traffic Control Plan.
- Contractor shall contact all utility companies which may be affected by this construction prior to beginning of construction.
- Service Box, Junction Box and conduit runs are typical only and should be adjusted during installation to clear obstructions and facilitate wiring as approved by the Engineer.
- The traffic signal system shall be complete and the Contractor shall furnish and install all equipment necessary for the satisfactory operation of electrical apparatus and for the complete operation of traffic signal system whether specifically mentioned or not.
- Signal equipment (mast arms, poles, cabinet, etc...) shall be black.
- The Contractor shall contact Westar to coordinate the power hook-up.
- Rigid steel conduit shall be installed under all roadways.

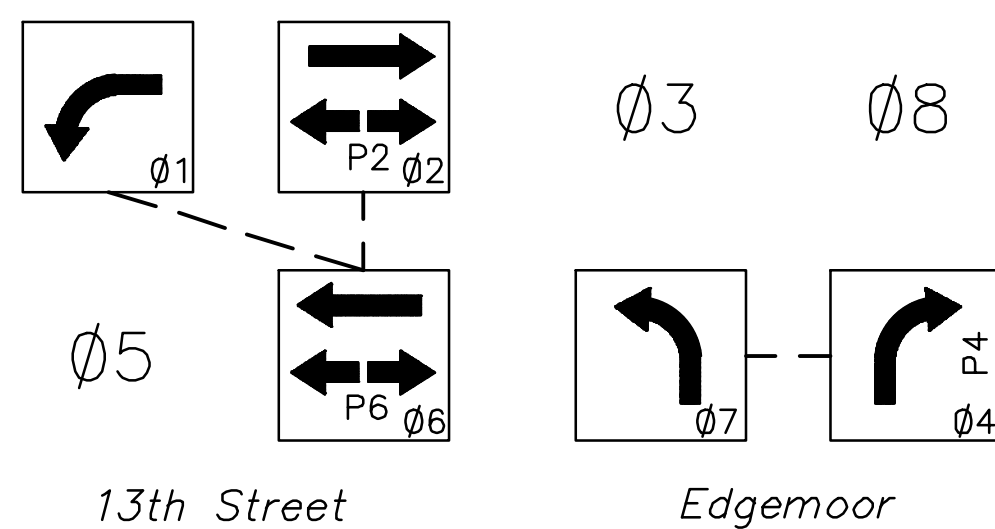
DETECTION ZONE

AREA NO.	SIZE	CAMERA	MOVEMENT CALLED
1	6' X 50'	13	6
2	6' X 50'	13	6
3	6' X 50'	13	1
4	6' X 50'	14	4
5	6' X 50'	14	7
6	6' X 50'	15	2
7	6' X 50'	15	2



FUNCTION	PHASE TIMING							
	1	2	3	4	5	6	7	8
MAX. I	20	60				60	20	
MAX. II/HFDW	20	60	20			60	20	
WALK		8				8		
FLASH DW		10				10		
MAX. INITIAL	6	10				10		
MIN. GREEN	5	10				10		
TBR	1	15				15		
TTR	1	25				25		
CITY OF WICHITA TO PROVIDE								
OBSERVE GAP								
PASSAGE								
MIN. GAP								
ADD ACTUATION								
YELLOW								
RED CLEAR								
RED REVERT								
WALK II								

FUNCTION	FUNCTION TABLE							
	1	2	3	4	5	6	7	8
VEHICLE RECALL								
PEDESTRIAN RECALL								
RED LOCK								
YELLOW LOCK	X		X					
PERMIT	X	X	X	X	X	X	X	X
PED. PHASES	X	X	X	X	X	X	X	X
LEAD PHASES	X					X		
DOUBLE ENRTY								
SEQUENTIAL TIMING								
STARTUP YELLOW					X			
OVERLAP A								
OVERLAP B								
OVERLAP C								
OVERLAP D								
EXCLUSIVE								
SIMULTANEOUS GAP								

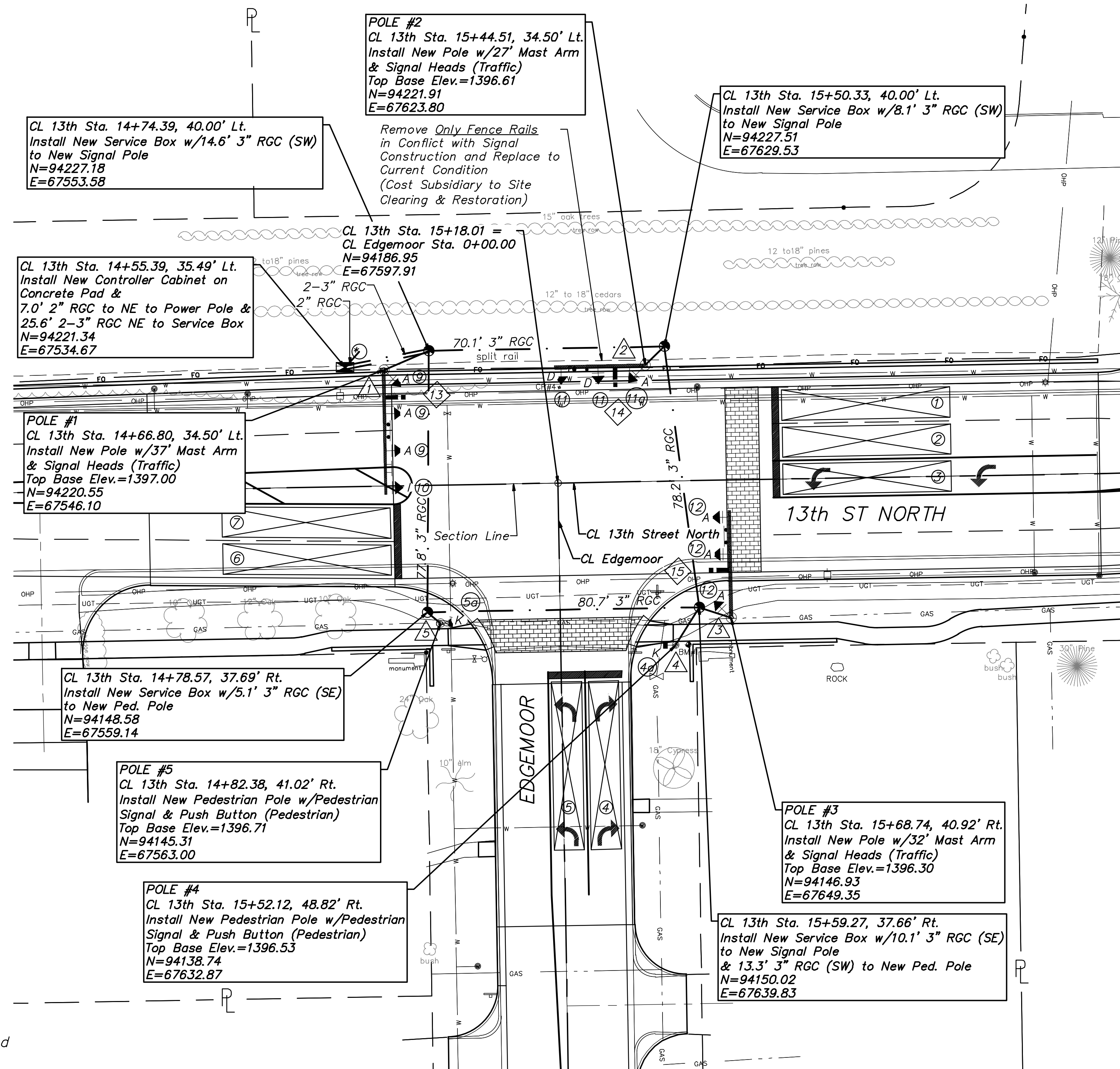


SIGNAL PHASING

--- Indicates that Phases may Time Concurrently

LEGEND

- Video Detection Camera
- Street Name Sign with Designation
- R10-12 (Left Turn Yield on Green)
- Detection Zone
-
- Traffic Signal Pole with Mast Arm
- Pad Mounted Controller
- Pedestrian Signal and Push Button
- Service Box
- Power Supply
- Mast Arm Mounted Signal Head (with back plate)
- Vertical Bracket Mounted Signal Head (with type designation)



13TH & EDGEMOOR
 SIGNAL PLAN
 CITY OF WICHITA, KANSAS
 GARY JANZEN, P.E. - CITY ENGINEER

POE & ASSOCIATES, INC.
 CONSULTING ENGINEERS
 544 West Douglas Avenue | Wichita, KS 67203
 Phone: 316.665-4114 | FAX: 316.665-4444

PE
 PROFESSIONAL ENGINEER
 KANSAS
 18137
 J. Dickman
 2/18/2015

Engineer: J. DICKMAN
 Designer: J. UNRUH
 Dwg. P.: 102091-102091-Base
 Job No.: 87N-0582-01
 Date: 8/31/2015

27 of 59