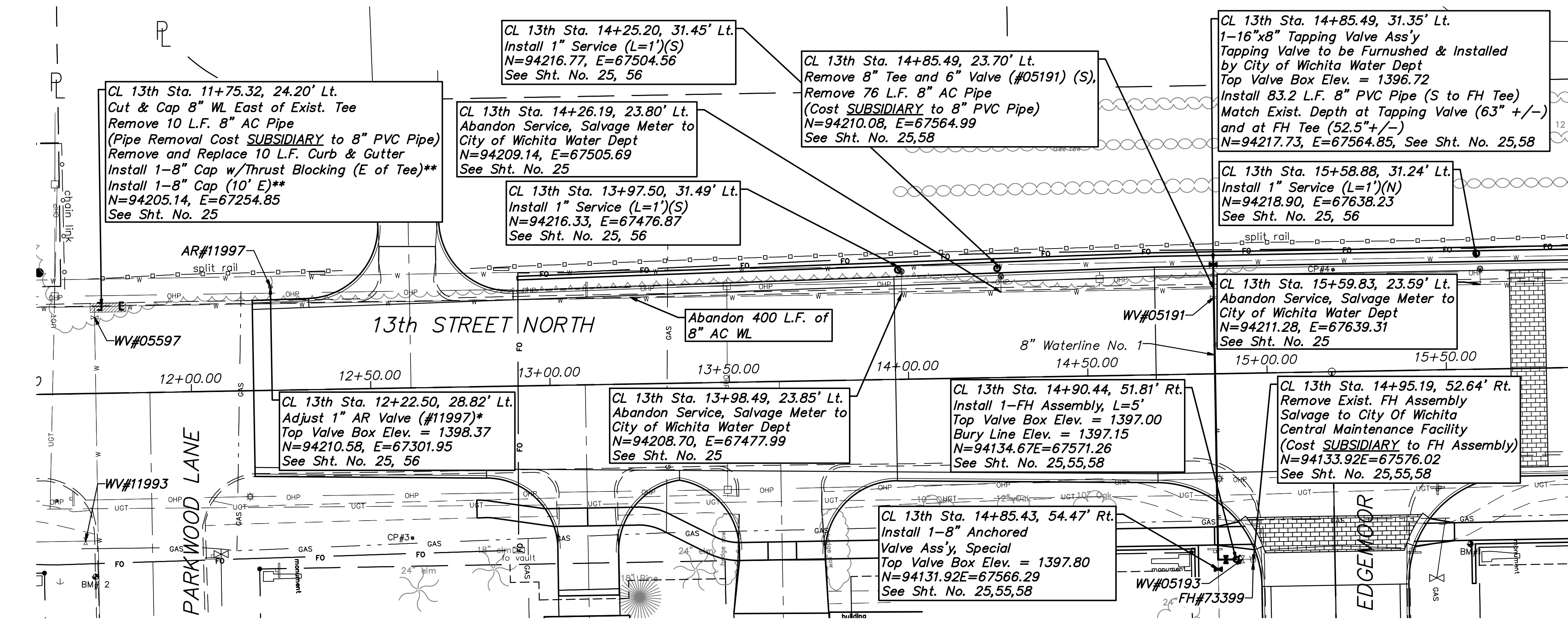
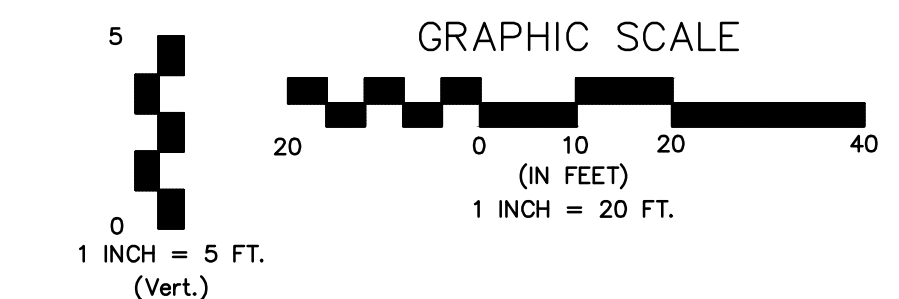
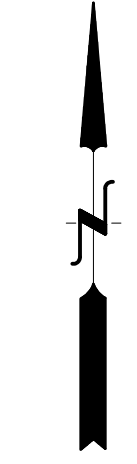


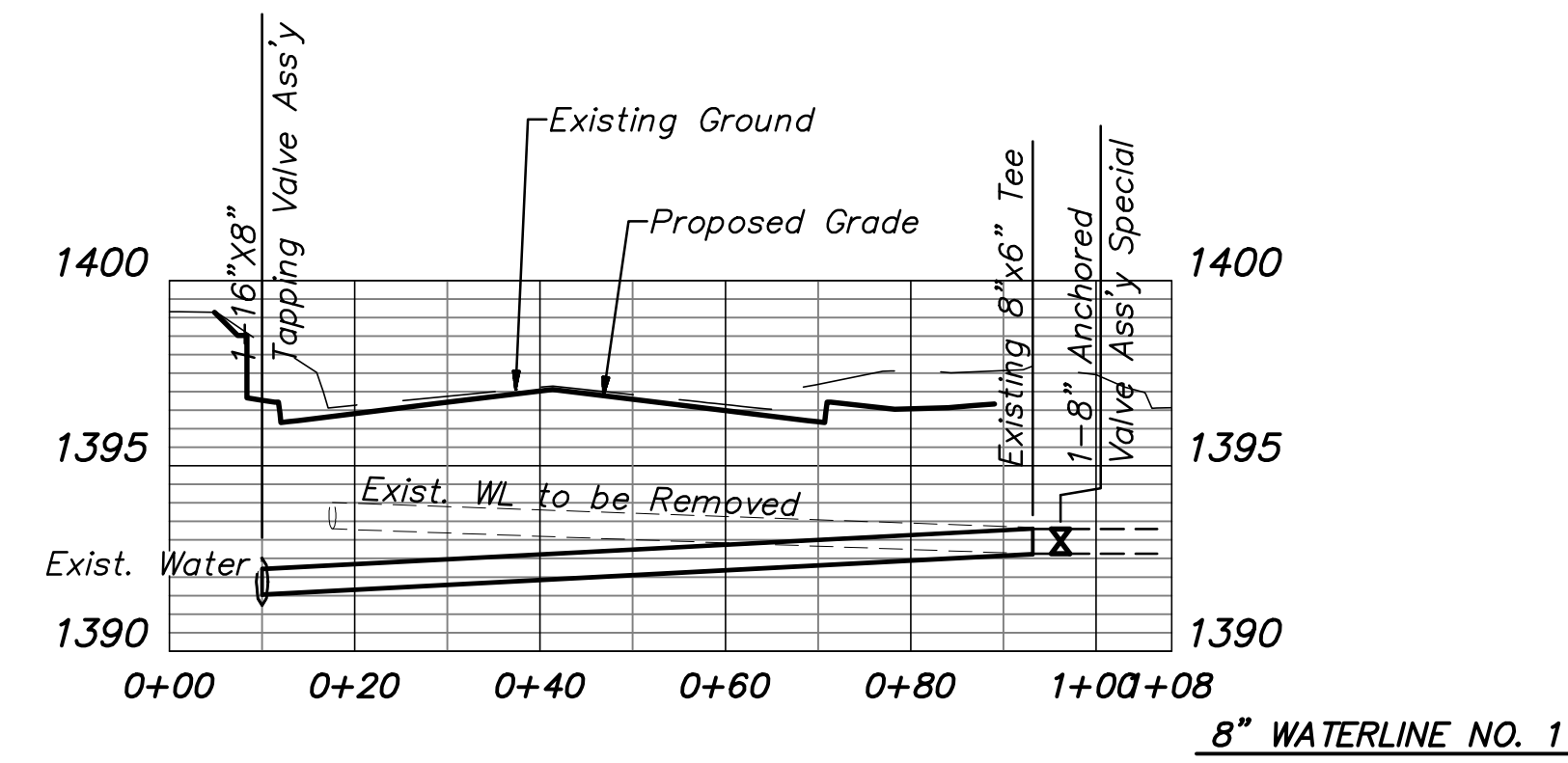
STATE	PROJECT NO.	YEAR	SHEET NO.	TOTAL SHEETS
KANSAS	87N-0582-01	2015	59	59



BM #1: City of Wichita Disk @ S.E. Corner  
13th Street & Edgemoor  
Elev. 1397.88 NAVD 88

BM#2: "□" cut on Top of Curb, E. side  
Parkwood, S. side 13th, just E. of  
Lot Corner @ S.W. Corner of Intersection  
Elev. 1397.77 NAVD 88

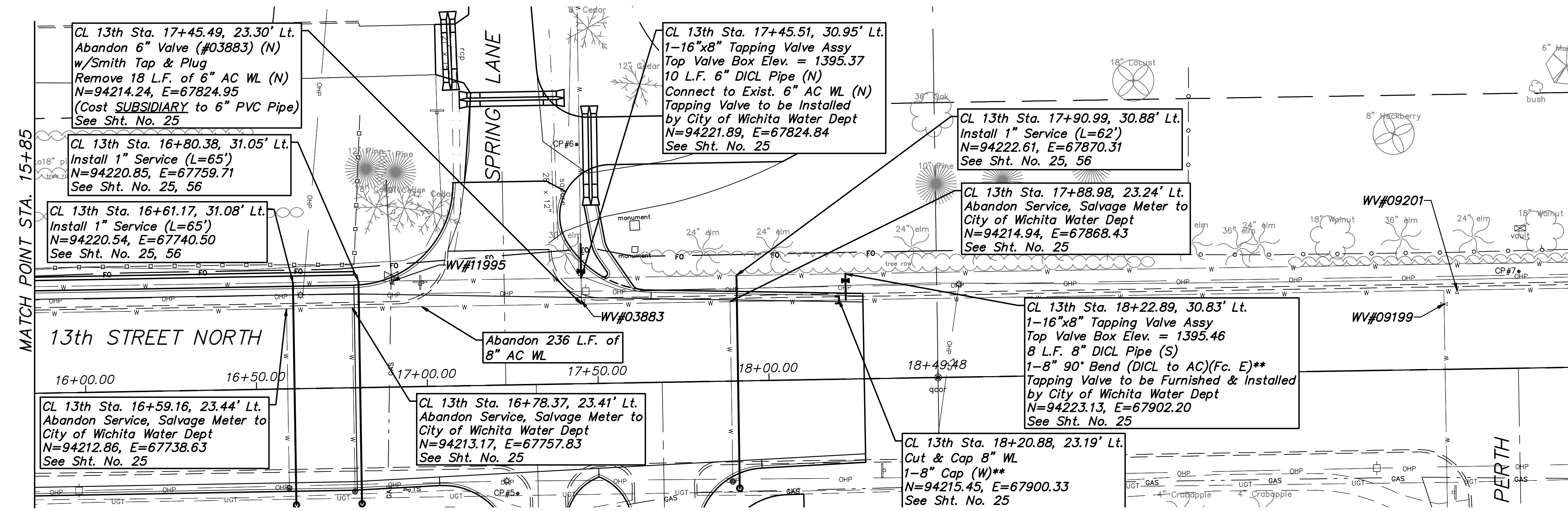
BM#3: "□" cut on S.E. Corner of Box Culvert  
just W. of Kevin St. Top Headwall  
Elev. 1394.23 NAVD 88



- \* Adjust Air Release Valve per current City of Wichita Specifications
- \*\* Do not use Exist. 8" main as part of thrust blocking for new caps or bends
- ▨ Curb & Gutter Remove/Replace
- Adjust existing valves with street paving work

WATER SERVICE*	
STATION	APPROXIMATE LENGTH
13+97.50	1' (SHORT)
14+25.20	1' (SHORT)
15+58.88	1' (SHORT)
16+61.17	65' (LONG)
16+80.38	65' (LONG)
17+90.99	62' (LONG)

\* Services all tie to Existing 16" Main



WATER QUANTITIES		
ITEM	QUANTITY	UM
6" DICL PIPE	10.0	L.F.
8" WL CAP	3	Each
8" PVC PIPE	83.2	L.F.
8" DICL PIPE	8.0	L.F.
8" 90° BEND	1	Each
FIRE HYDRANT ASS'Y	1	Each
TAPPING VALVE ASS'Y	3	Each
ANCH'D VALVE ASS'Y, SPECIAL	1	Each
WATER SERVICE, 1"	6	Each
ABANDON 8" WL	636	L.F.
ADJUST 1" AR VALVE	1	Each
REMOVE/REPL. CURB & GUTTER	10	L.F.

+ Cap to match waterline material

13TH & EDGEMOOR  
WATER PLAN  
CITY OF WICHITA, KANSAS  
GARY JANZEN, P.E. - CITY ENGINEER

POE & ASSOCIATES, INC.  
CONSULTING ENGINEERS  
544 West Douglas Avenue, Wichita, KS 67203  
Phone 316.685.4114 | FAX 316.685.4444

Sheet of 59