

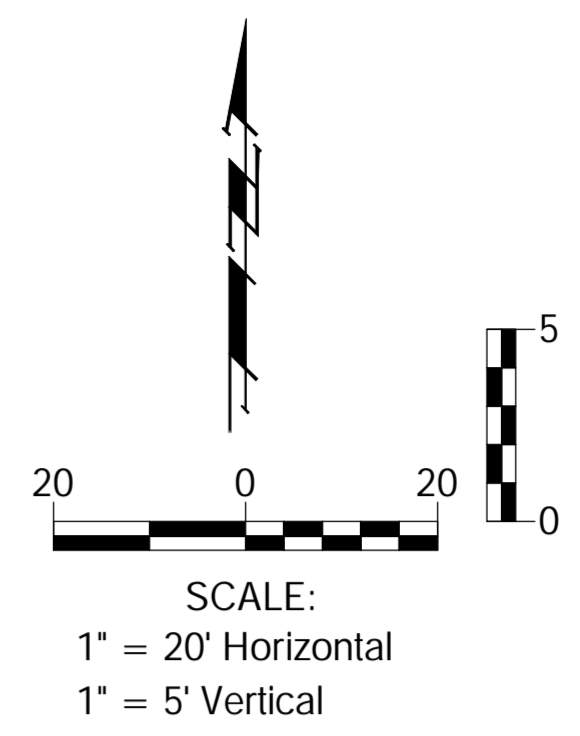
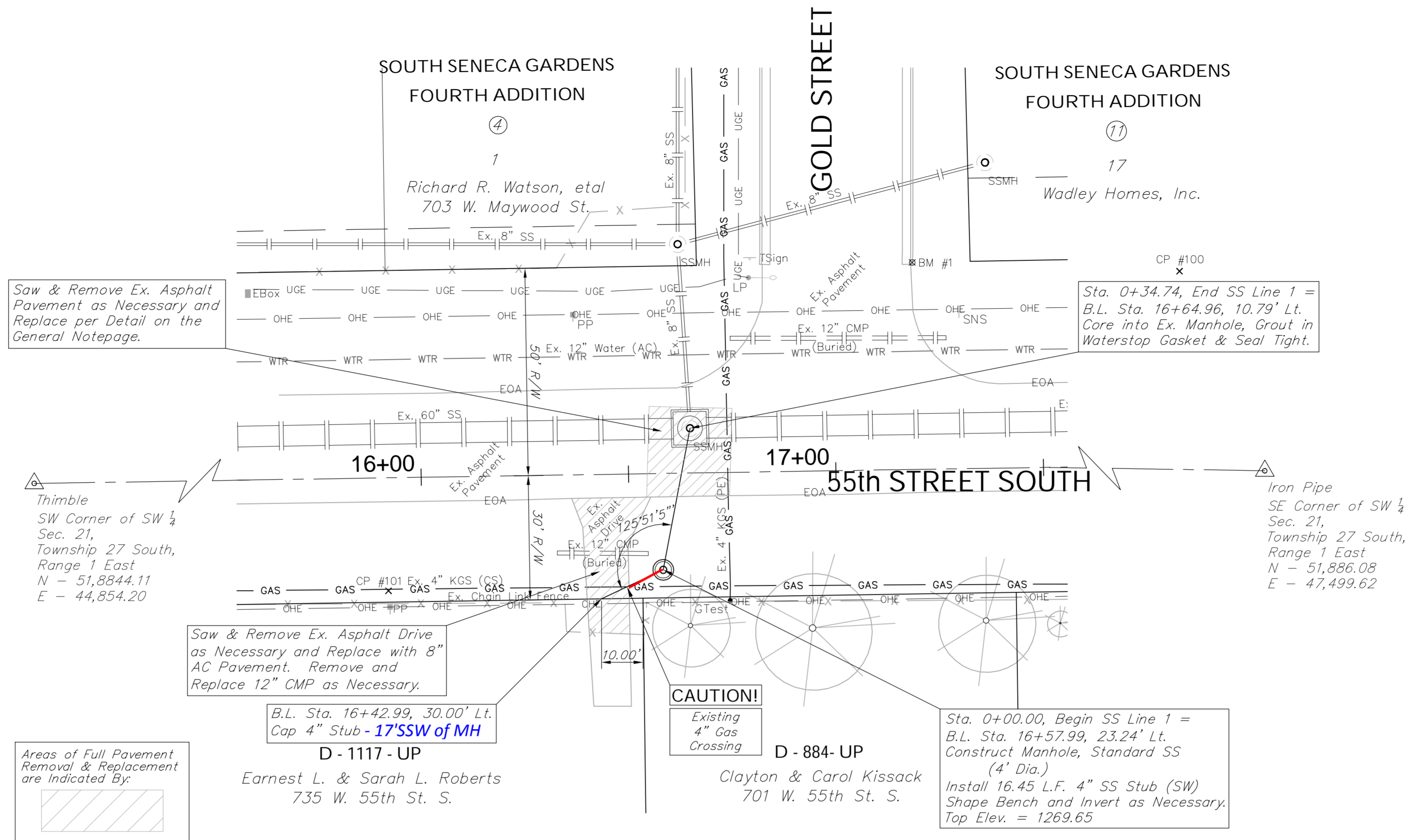
**BENCHMARK:**  
 BM #1 - Chiseled "a" on the Top of Curb on the East Side of Gold Street, 0.8' North of the South Limits of the Curb. Elev. = 1269.19 (NAVD 88)

**CONTROL POINTS**

CP #100 - Rebar with Yellow Topo Cap  
 N = 51,919.20, E = 46,636.38  
 Elev. = 1270.04 (NAVD 88)

CP #101 - Rebar with Yellow Topo Cap  
 N = 51,842.12, E = 46,446.12  
 Elev. = 1269.49 (NAVD 88)

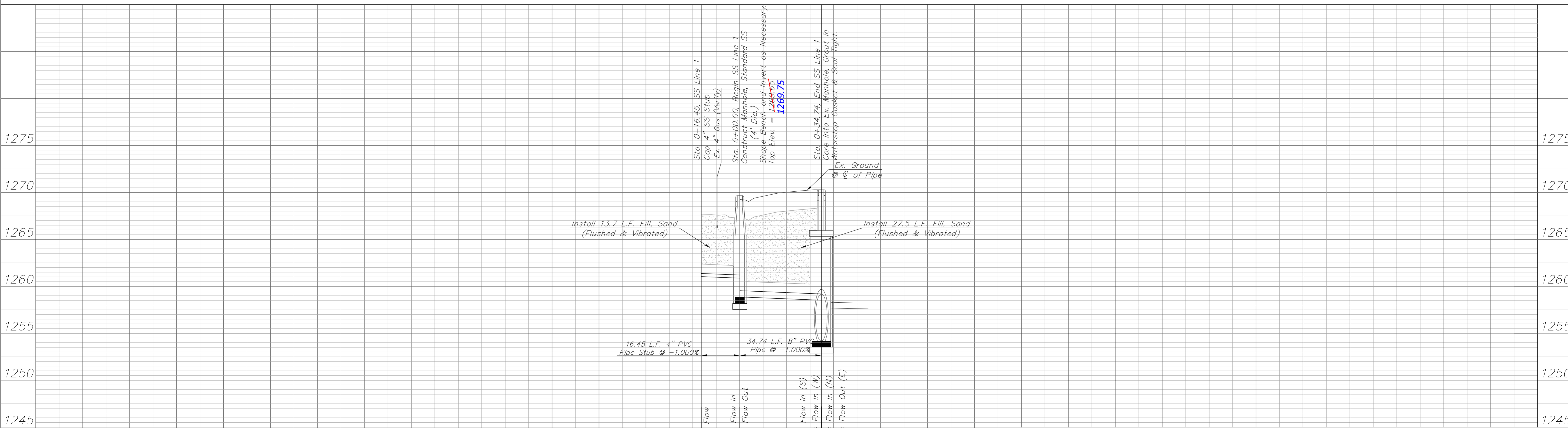
	Northing	Easting
Manhole	1651847.18	1646512.35
4" Stub	1651840.18	1346497.46



The City of Wichita records do not indicate the type of lining (either plastic liner or T-Lock liner) used in this manhole. After making the proposed connection, the existing liner will need to be repaired as necessary and sealed with a product that will adhere to it properly. The Contractor shall report the type of lining and the method used for sealing to the Project Inspector for inclusion in the As-Built plans.

The existing 60" sewer main carries a high volume of sewage flow and contains a large amount of sewer gas. The Contractor shall take all necessary measures to provide adequate ventilation upstream and downstream of the connecting manhole. Cost to be **SUBSIDIARY** to Lump Sum Bid Item "Connection to Existing Manhole".

The Contractor shall use all necessary precautions to control sparks during construction activities so as not to ignite the sewer gases.



Drawing File: E:\Projects\55th St. S. Sewer Ext\Civil 3d\55th SS Base.dwg (SS01)  
 Design: ENGINEER  
 Drawn: STAFF  
 Approved: TPV  
 Scale: NOTED  
 Project No: 1507E265 CAPITAL IMPROVEMENT PROJECT  
**8" SANITARY SEWER EXTENSION**  
 PLAN & PROFILE  
 55TH STREET SOUTH 8" SANITARY SEWER EXTENSION

**Baughman Company, P.A.**  
 315 Ellis St. Wichita, KS 67211 P 316-262-7271 F 316-262-0149  
 ENGINEERING | SURVEYING | PLANNING | LANDSCAPE ARCHITECTURE

September 2015  
 SHEET 3 OF 13