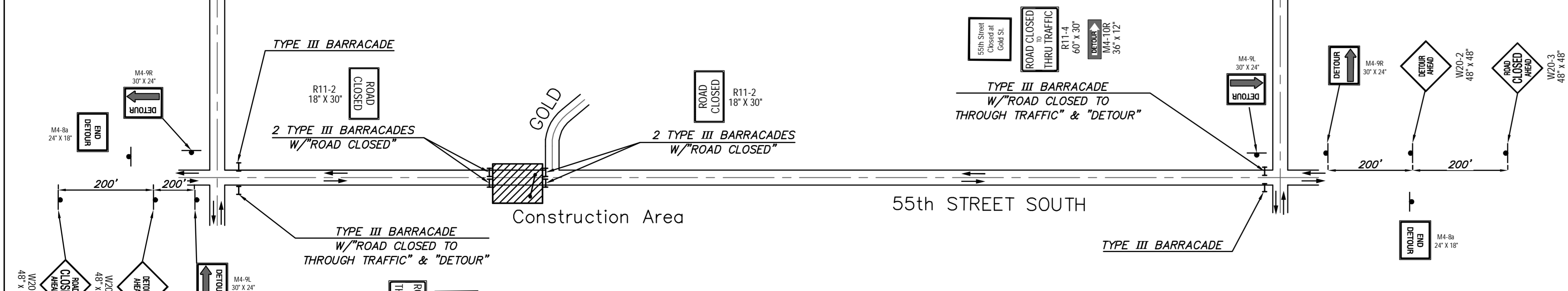
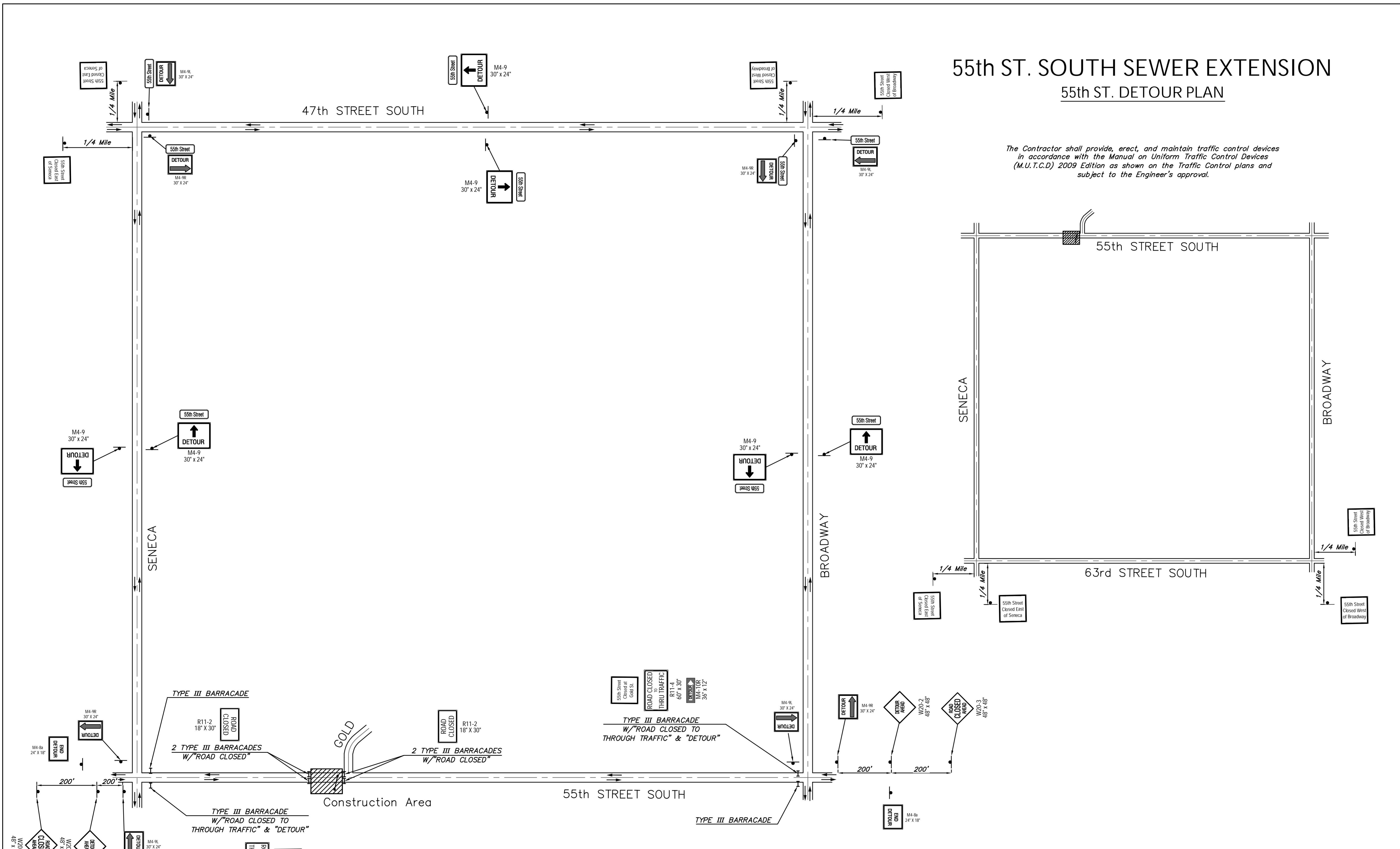


55th ST. SOUTH SEWER EXTENSION

55th ST. DETOUR PLAN

The Contractor shall provide, erect, and maintain traffic control devices in accordance with the Manual on Uniform Traffic Control Devices (M.U.T.C.D) 2009 Edition as shown on the Traffic Control plans and subject to the Engineer's approval.



Drawing File: E:\Projects\55th St. S. Sewer Ext. 15-06-E263\DETOUR PLAN.dwg
 Design: TPV
 Drawn: LP
 Approved: TPV
 Scale: None

Project No. 15-07-E265 CAPITAL IMPROVEMENT PROJECT
55th STREET SOUTH
DETOUR PLAN
 55th STREET SOUTH SEWER EXTENSION

Baughman Company, P.A.
 315 Ellis St., Wichita, KS 67211 P 316-262-7271 F 316-262-0149
 ENGINEERING | SURVEYING | PLANNING | LANDSCAPE ARCHITECTURE

September 2015
 SHEET 5 OF 13