

**STATE OF KANSAS**  
**DEPARTMENT OF TRANSPORTATION**  
**PLAN AND PROFILE OF PROPOSED**  
**DOUGLAS AVENUE BRIDGE AT LINDEN**

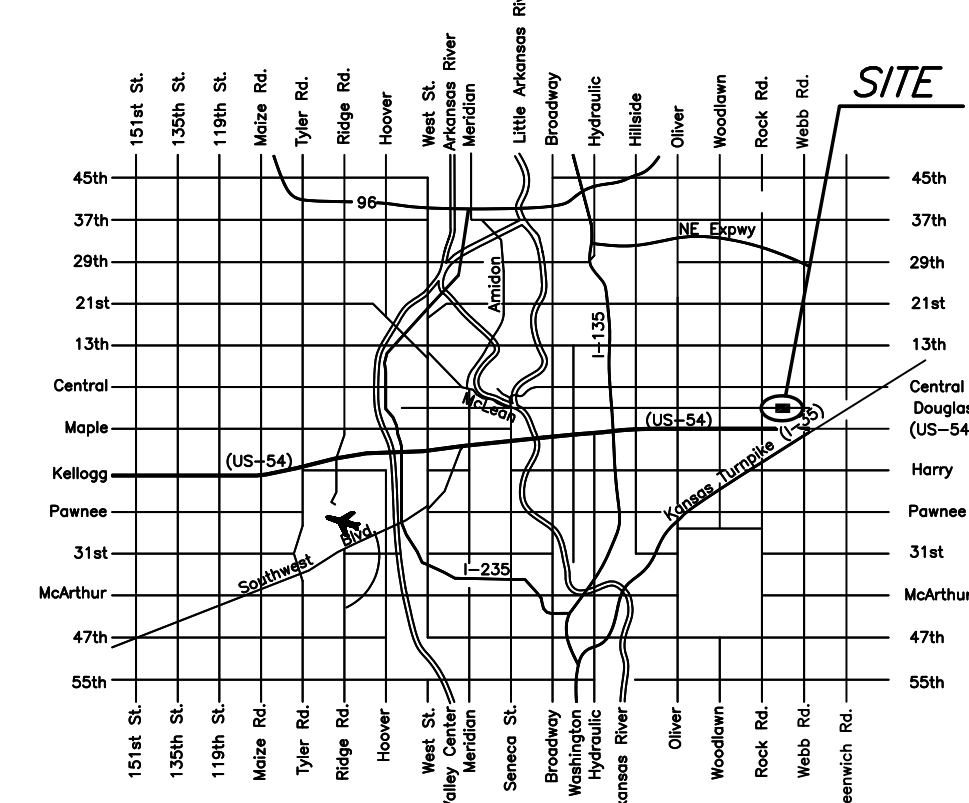
**FEDERAL AID PROJECT**  
 CITY OF WICHITA PROJECT NO. 472-85119  
**SEDGWICK COUNTY**  
**CITY OF WICHITA**

STATE	PROJECT NO.	YEAR	SHEET NO.	TOTAL SHEETS
KANSAS	87 N-0611-01	2015	1	51
F.A. NO. STP-N061(101)				

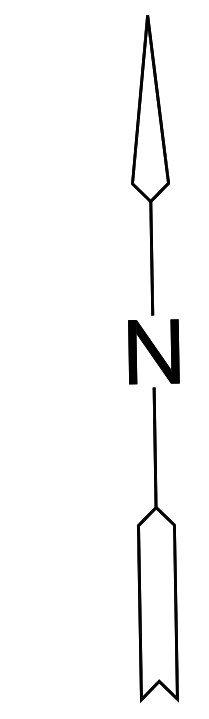


DOT PROJ. NO. 87 N-0611-01

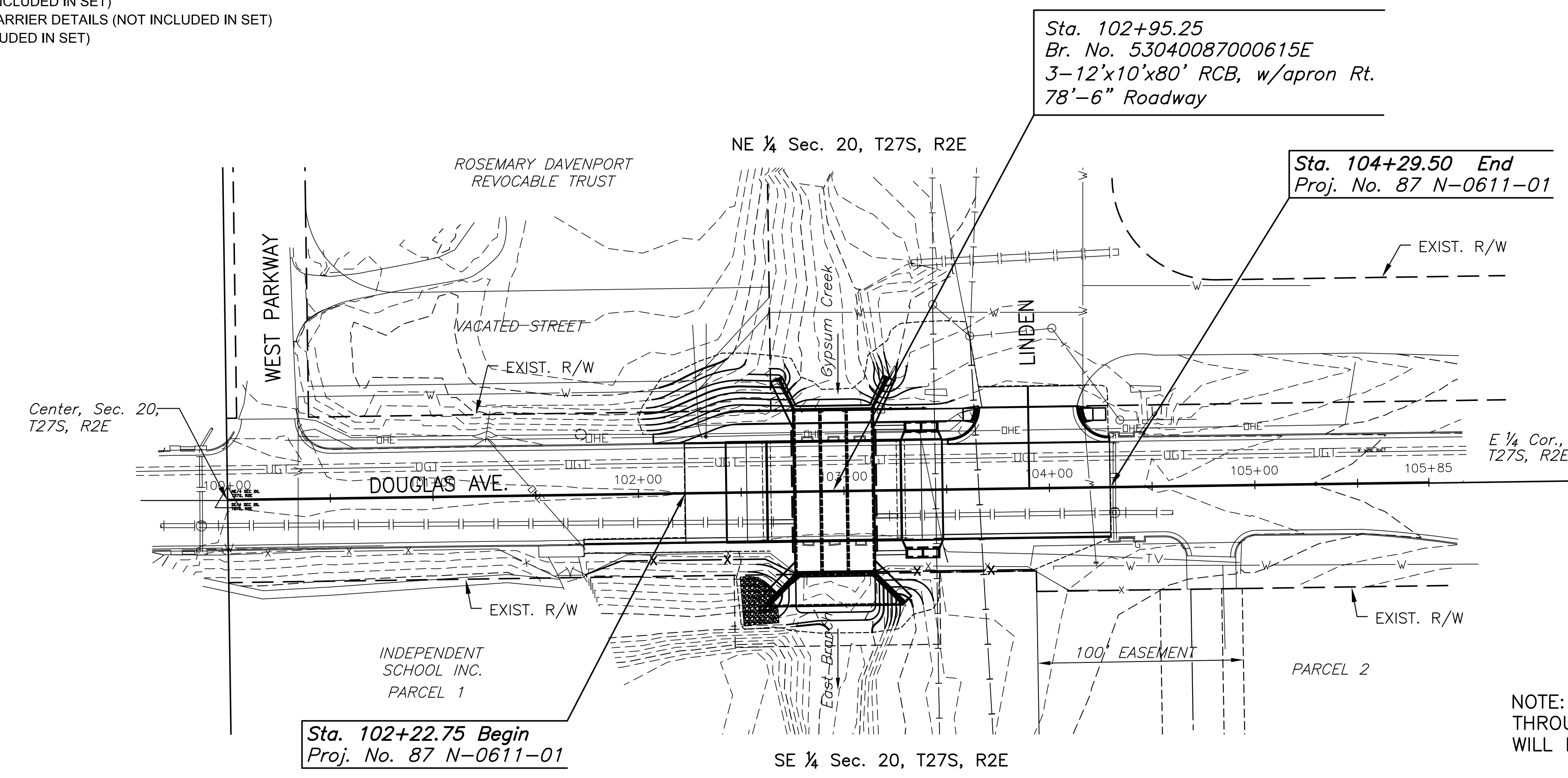
- GRADING
- SURFACING
- CONCRETE PAVEMENT
- STORM SEWER
- BRIDGE
- PAVEMENT MARKING
- FENCING
- SEEDING



LOCATION MAP



Scale: 1"=40'



**INDEX TO DRAWINGS**

SHEET NO.	DESCRIPTION
1	<b>TITLE SHEET</b>
3	<b>TYPICAL SECTIONS</b>
4	<b>PAVING PLAN</b>
#	CURB & GUTTER DETAILS (NOT INCLUDED IN SET)
##	WHEELCHAIR RAMP DETAILS (NOT INCLUDED IN SET)
12	<b>STORM SEWER PLAN AND PROFILE</b>
##	INLET DETAILS (NOT INCLUDED IN SET)
##	MANHOLE/INLET FRAME AND COVER DETAILS (NOT INCLUDED IN SET)
##	CURB INLET PAVEMENT UNDERDRAIN DETAILS (NOT INCLUDED IN SET)
18	<b>BRIDGE CONTOUR MAP</b>
##	RCB AUXILIARY DETAILS (LRFD) (NOT INCLUDED IN SET)
##	PRECAST CONCRETE BOX CULVERT DETAILS (NOT INCLUDED IN SET)
##	BRIDGE EXCAVATION (LRFD) (NOT INCLUDED IN SET)
##	SUPPORTS AND SPACERS FOR REINFORCING STEEL (NOT INCLUDED IN SET)
##	EROSION CONTROL BMP DETAILS (NOT INCLUDED IN SET)
##	PAVEMENT MARKING AND SIGNING PLAN (NOT INCLUDED IN SET)
##	SIGNING DETAILS (NOT INCLUDED IN SET)
38-41	<b>TRAFFIC CONTROL PLANS</b>
##	TRAFFIC CONTROL DETAILS (NOT INCLUDED IN SET)
##	TEMPORARY CONCRETE SAFETY BARRIER DETAILS (NOT INCLUDED IN SET)
##	PROJECT DRAINAGE MAP (NOT INCLUDED IN SET)
52-54	<b>CROSS SECTIONS</b>

**DESIGN DESIGNATION**

AADT (2010)	= 12,050
AADT (2030)	= 14,703
DHV	= 10%
D	= 60%
T	= 3%
V	= 40 MPH
C of A	= None
Clear Zone	= 6 FT.

**CONVENTIONAL SIGNS**

COUNTY LINE	-----	CENTER LINE OF PROJECT	-----
CITY LIMITS	=====	TERRACE	-----
STATE OR NATIONAL LINE	-----	CULVERTS	-----
TOWNSHIP, SECTION or GRANT LINE	-----	DROP INLET & STORM SEWER	-----
PROPERTY LINE	-----	ACCESS CONTROL	-----
HIGHWAY FENCE	-----	POWER POLE	-----
EXISTING FENCE	-----	TELEPHONE POLE	-----
GUARDRAIL	-----	MARSH	-----
CONSTRUCTION LIMITS	-----	HEDGE	-----
RIGHT OF WAY LINE	-----	TREES	-----
TRAVELED WAY	-----	PROFILE ELEVATION	-----
RAILROADS	-----	STREAM or CREEK	-----

GROSS LENGTH OF PROJECT	206.75	FT.
EXCEPTIONS	0.00	FT.
ADDITIONS	0.00	FT.
NET LENGTH OF PROJECT	206.75	FT. 0.039 MILES
NET LENGTH OF BRIDGES	39.00	FT. 0.007 MILES
NET LENGTH OF ROAD	167.75	FT. 0.032 MILES

**LEGEND**

- Communication Lines
- Electric Lines
- Gas Lines
- Storm and Sanitary Sewers (Existing)
- Water Lines (Existing)

NOTE: TWO WAY TRAFFIC TO BE CARRIED THROUGH CONSTRUCTION. LOCAL TRAFFIC WILL BE PERMITTED TO ADJACENT PROPERTIES.

NOTE: THE PIPES ON THIS PROJECT ARE IN ACCORDANCE WITH THE CURRENT KDOT PIPE POLICY.

APPROVED - DATE  
 \_\_\_\_\_  
 GARY JANZEN, P.E.  
 CITY ENGINEER

CONSTRUCTION PLANS FOR  
**DOUGLAS AVENUE BRIDGE AT LINDEN**  
 WICHITA, KANSAS

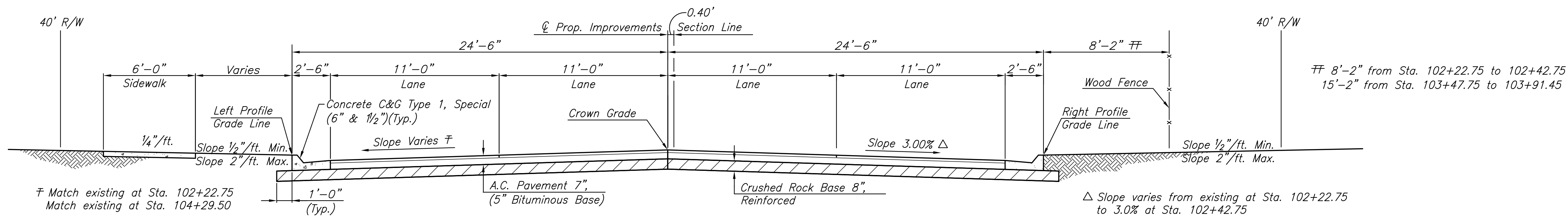
©2013 MKEC Engineering All Rights Reserved www.mkec.com  
 These drawings and their contents, including, but not limited to, all concepts, designs, & ideas are the exclusive property of MKEC Engineering (MKEC), and may not be used or reproduced in any way without the express consent of MKEC.

**TITLE SHEET**

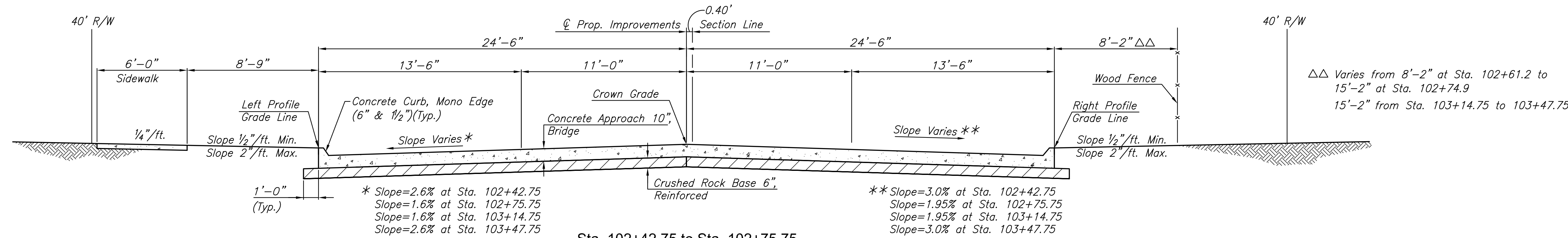
PROJECT NO.	472-85119	
DATE	FEB. 2014	
SCALE	1"=40'	
DESIGNED	DRAWN	CHECKED
JRA	JSB	JRA
NO.	REVISION	DATE
SHEET NO.		
1 OF 51		

SURVEYED BY \_\_\_\_\_ DATE \_\_\_\_\_  
 PLOTTED BY \_\_\_\_\_  
 INKED BY \_\_\_\_\_  
 DESIGNED BY \_\_\_\_\_ SQUAD \_\_\_\_\_  
 J:\PROJECTS\2013\1301040646.DOUGLAS BRIDGE AT LINDEN\GIS\CIVIL\CAD\UTL\1304646T01.DWG

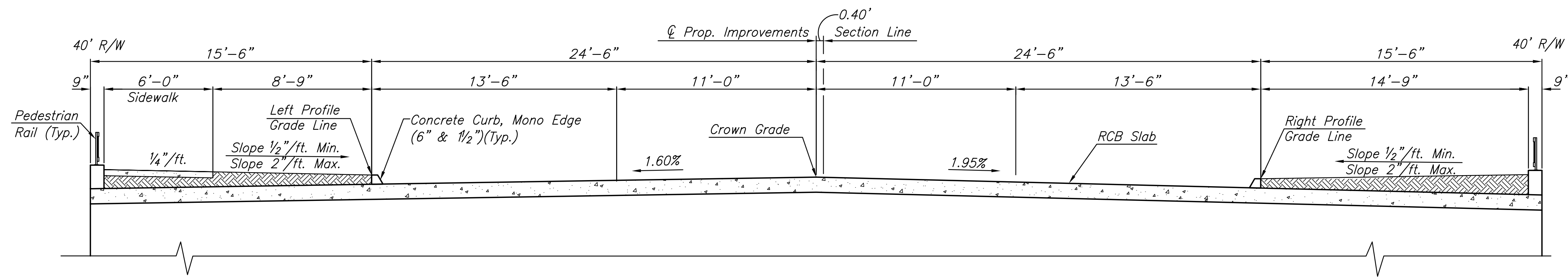
STATE	PROJECT NO.	YEAR	SHEET NO.	TOTAL SHEETS
KANSAS	87 N-0611-01	2015	3	51



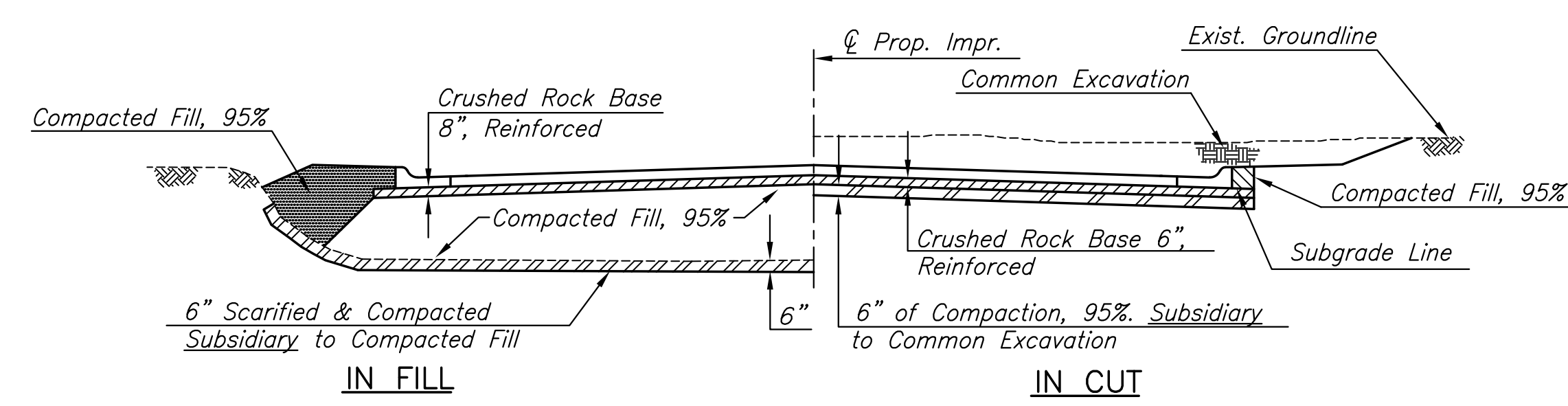
Sta. 102+22.75 to Sta. 102+42.75  
Sta. 103+47.75 to Sta. 104+29.50



Sta. 102+42.75 to Sta. 102+75.75  
Sta. 103+14.75 to Sta. 103+47.75



Sta. 102+75.75 to Sta. 103+14.75



FOUNDATION TREATMENT AND COMPACTION OF EARTHWORK

CONSTRUCTION PLANS FOR  
**DOUGLAS AVENUE BRIDGE AT LINDEN**  
WICHITA, KANSAS

©2013 MKEC Engineering All Rights Reserved www.mkec.com  
These drawings and their contents, including, but not limited to, all concepts, designs, & ideas are the exclusive property of MKEC Engineering (MKEC), and may not be used or reproduced in any way without the express consent of MKEC.

PROJECT TYPICAL SECTIONS

PROJECT NO.	472-85119	
DATE	FEB. 2014	
SCALE	N/A	
DESIGNED	DRAWN	CHECKED
JRA	JSB	JRA
NO.	REVISION	DATE

P:\Projects\2013\130104052\_Couglas\_Bridge\_at\_Linden\CAD\DWG\1304517P.dwg  
 PLOTTED Wednesday, September 10, 2014 @ 07:22PM

J:\PROJECTS\2013\1301040545\_DOUGLAS BRIDGE AT LINDEN\CIVIL\CAD\UTIL\13040545RPT.DWG  
 PLOTTED: Wednesday, September 10, 2014 @ 10:52AM  
 WICHITA, KANSAS

- Control Point #13**
1. Set 5/8" rebar with red "MKEC Control Point" cap in sidewalk
  2. Sta. 100+55.45, 28.02' Lt.  
N 1686410.929, E 1678534.085
  3. SE side firehydrant 9.0' NW
  4. Centerline of Douglas St. 28.0' S
  5. Bend in south side of sidewalk 6.5' SE

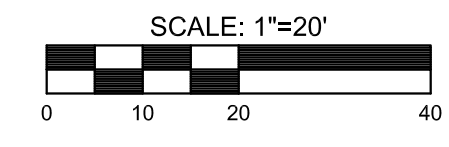
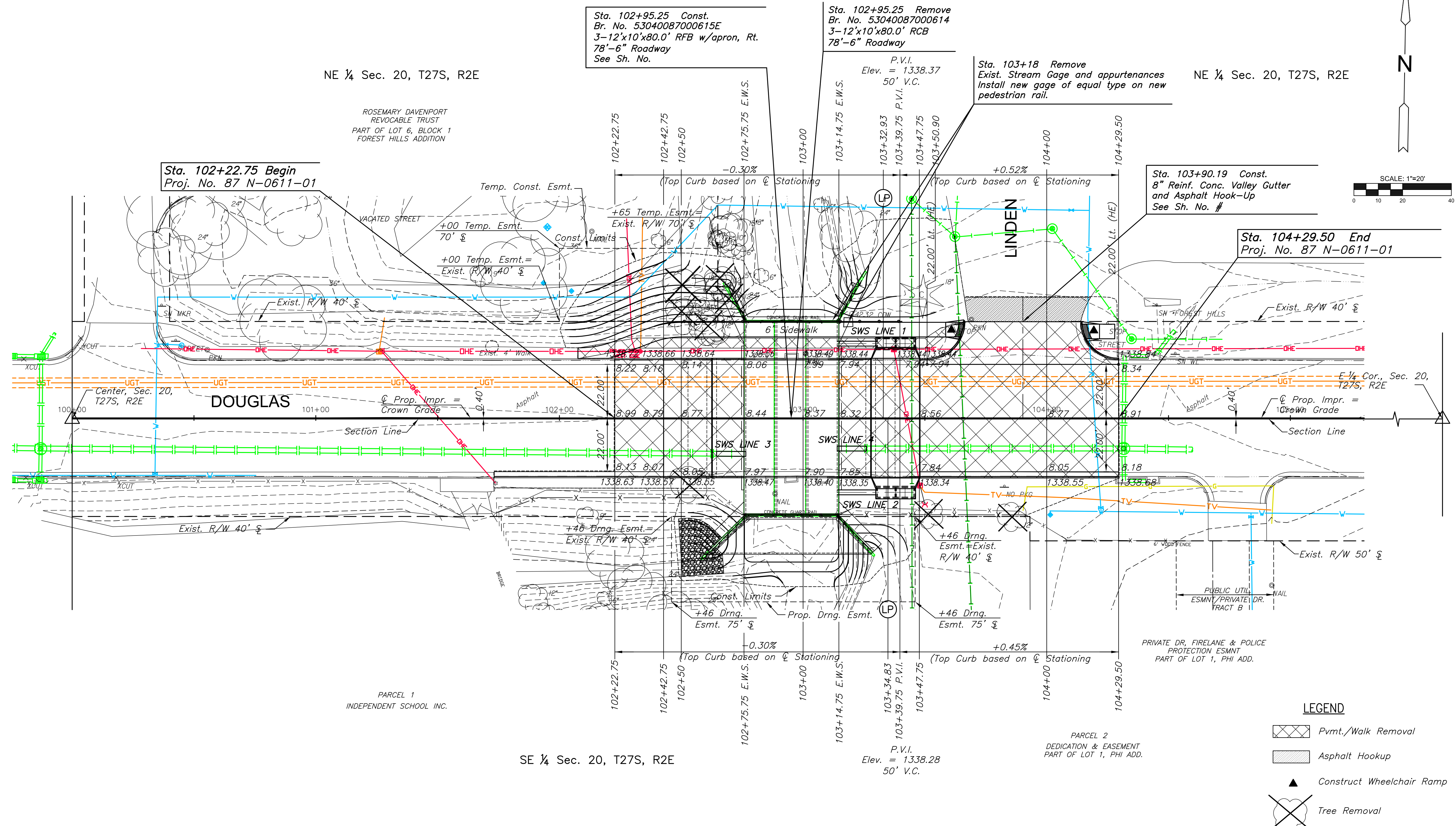
- Control Point #11**
1. Set 5/8" rebar with red "MKEC Control Point" cap in asphalt
  2. Sta. 103+69.13, 40.38' Lt.  
N 1686427.836, E 1678847.555
  3. SE corner of stone sign 18.0' NW
  4. Concrete/Asphalt edge line 1.3' S
  5. NE end of sidewalk ramp 2.81' SW

- Control Point #10**
1. Set 5/8" rebar with red "MKEC Control Point" cap in asphalt
  2. Sta. 103+84.67, 135.12' Lt.  
N 1686522.793, E 1678861.725
  3. Lightpole at south end of island Linden Dr. 19.0' N
  4. West edge asphalt Linden Drive 34.0' W
  5. East edge asphalt Linden Drive 33.0' E

STATE	PROJECT NO.	YEAR	SHEET NO.	TOTAL SHEETS
KANSAS	87 N-0611-01	2015	4	51



CONSTRUCTION PLANS FOR  
**DOUGLAS AVENUE BRIDGE AT LINDEN**  
 WICHITA, KANSAS



Sta. 103+90.19 Const.  
8" Reinf. Conc. Valley Gutter  
and Asphalt Hook-Up  
See Sh. No. #

Sta. 104+29.50 End  
Proj. No. 87 N-0611-01

Sta. 102+22.75 Begin  
Proj. No. 87 N-0611-01

Sta. 102+95.25 Const.  
Br. No. 53040087000615E  
3-12"x10"x80.0' RFB w/apron, Rt.  
78'-6" Roadway  
See Sh. No.

Sta. 102+95.25 Remove  
Br. No. 53040087000614  
3-12"x10"x80.0' RCB  
78'-6" Roadway

Sta. 103+18 Remove  
Exist. Stream Gage and appurtenances  
Install new gage of equal type on new  
pedestrian rail.

**LEGEND**

- Pvmt./Walk Removal
- Asphalt Hookup
- Construct Wheelchair Ramp
- Tree Removal

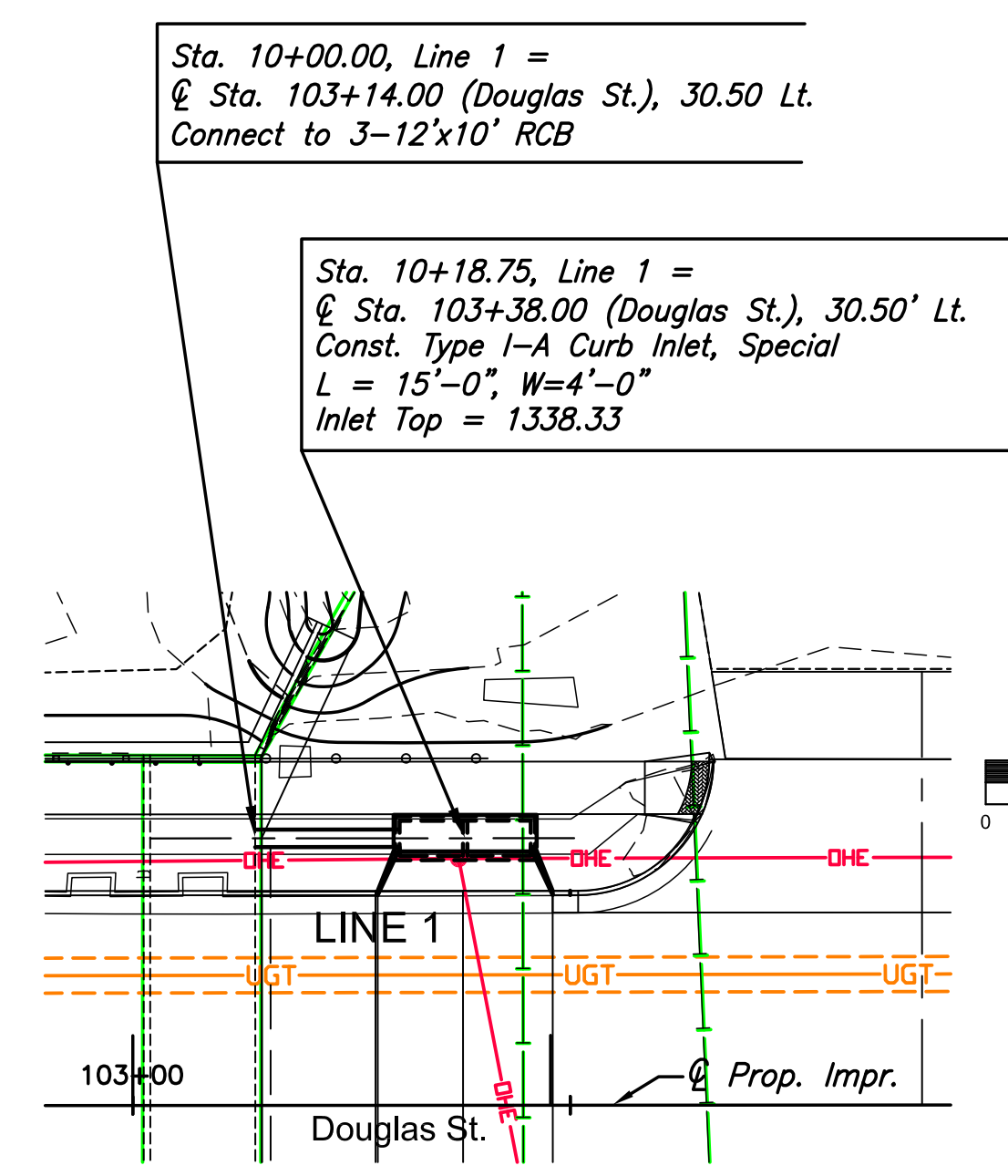
BM#1 City of Wichita benchmark disc in top of concrete bridge rail at northeast corner of project RCB  
Sta. 103+14.62', 39.70' Lt. Elev. 1342.32

REMOVAL OF EXISTING STRUCTURE: The Contractor shall remove the existing concrete RCB and wings. All materials shall become the property of the Contractor and shall be removed from the project site by the Contractor.

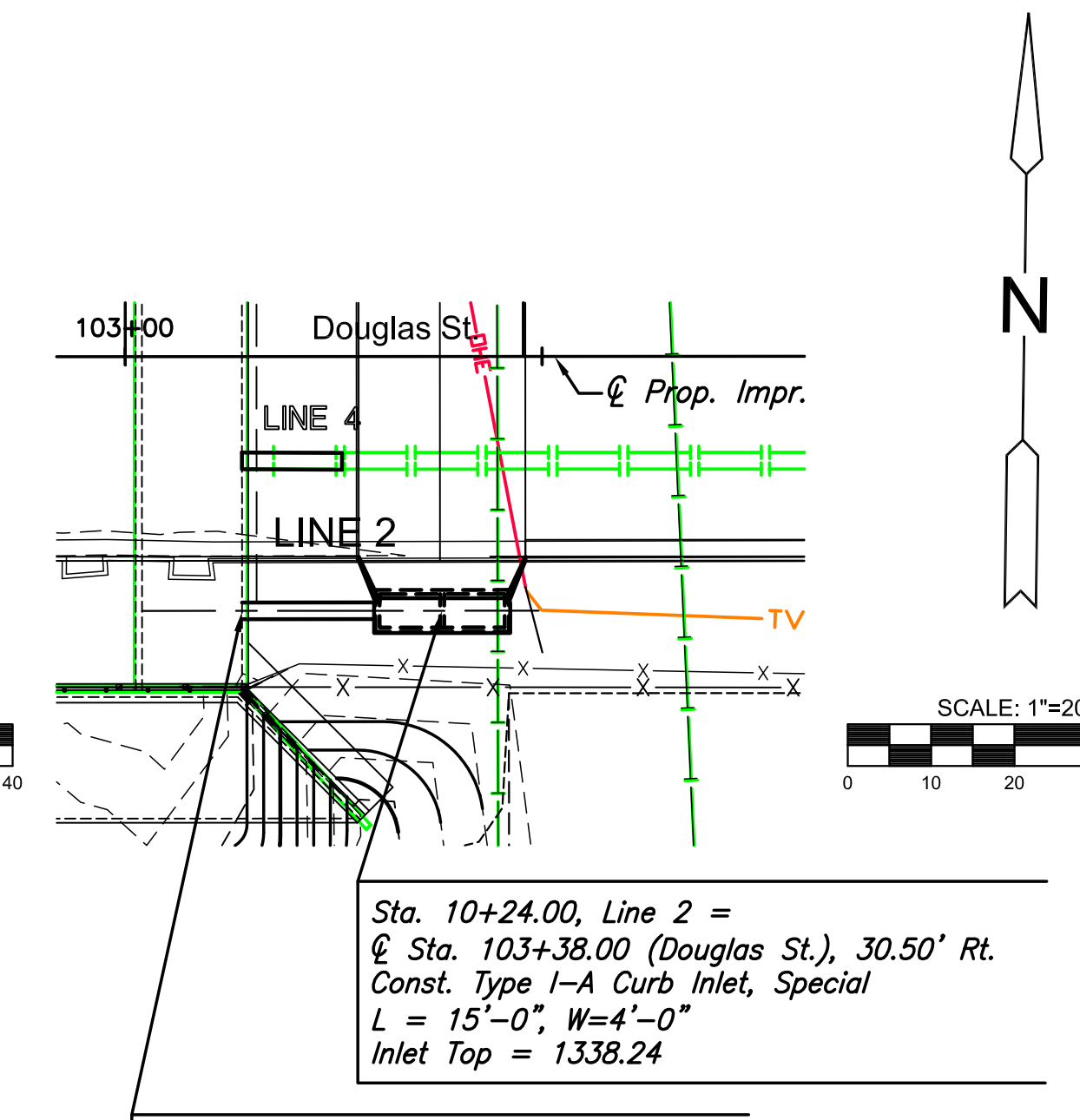
©2013 MKEC Engineering  
All Rights Reserved  
www.mkec.com  
These drawings and their contents, including, but not limited to, all concepts, designs, & ideas are the exclusive property of MKEC Engineering (MKEC), and may not be used or reproduced in any way without the express consent of MKEC.

PAVING PLAN SHEET	
PROJECT NO.	472-85119
DATE	FEB. 2014
SCALE	1"=40'
DESIGNED	DRAWN
JRA	JSB
CHECKED	JRA
NO.	REVISION
SHEET NO.	
4 OF 51	

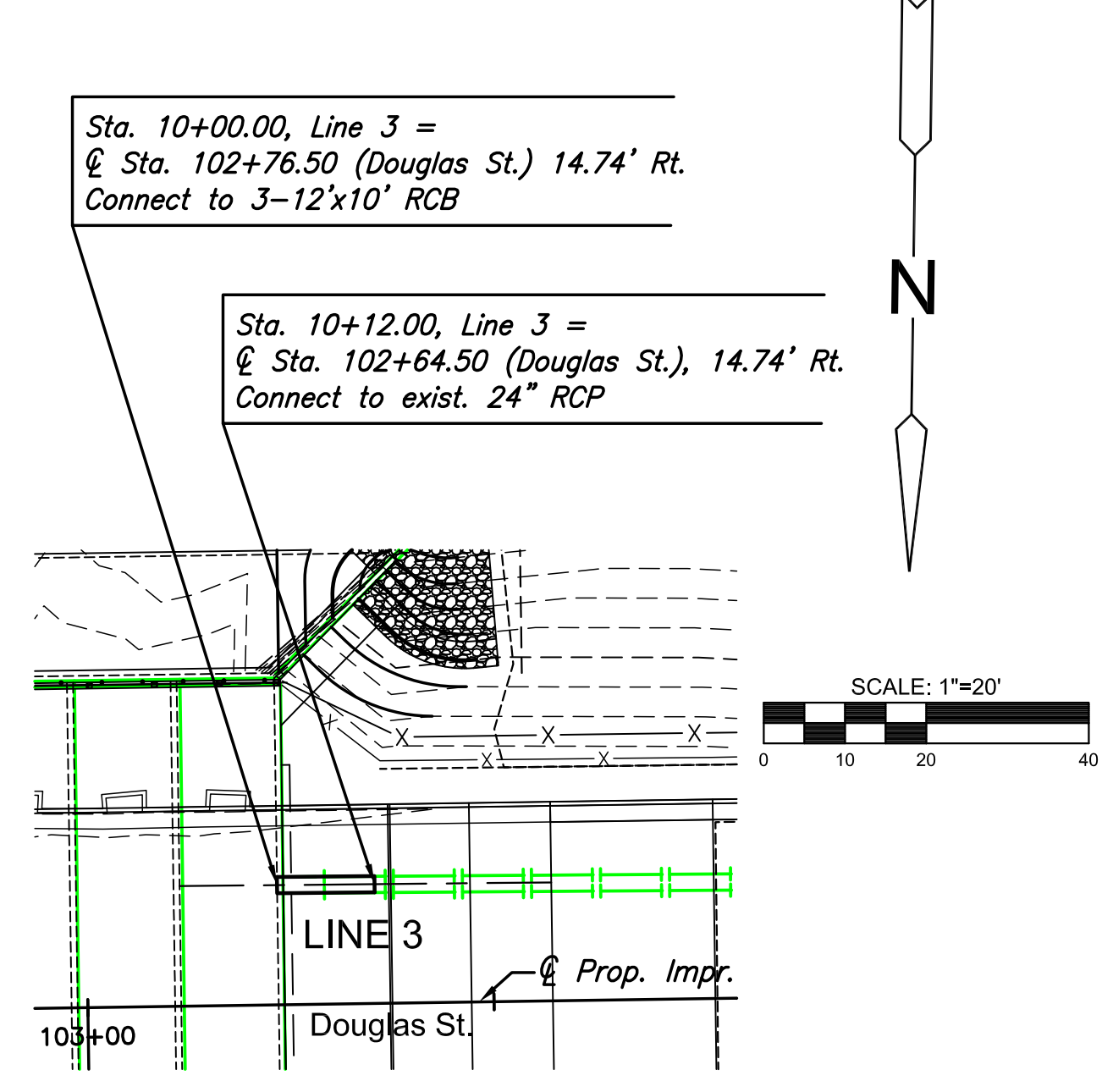
STATE	PROJECT NO.	YEAR	SHEET NO.	TOTAL SHEETS
KANSAS	87 N-0611-01	2015	12	51



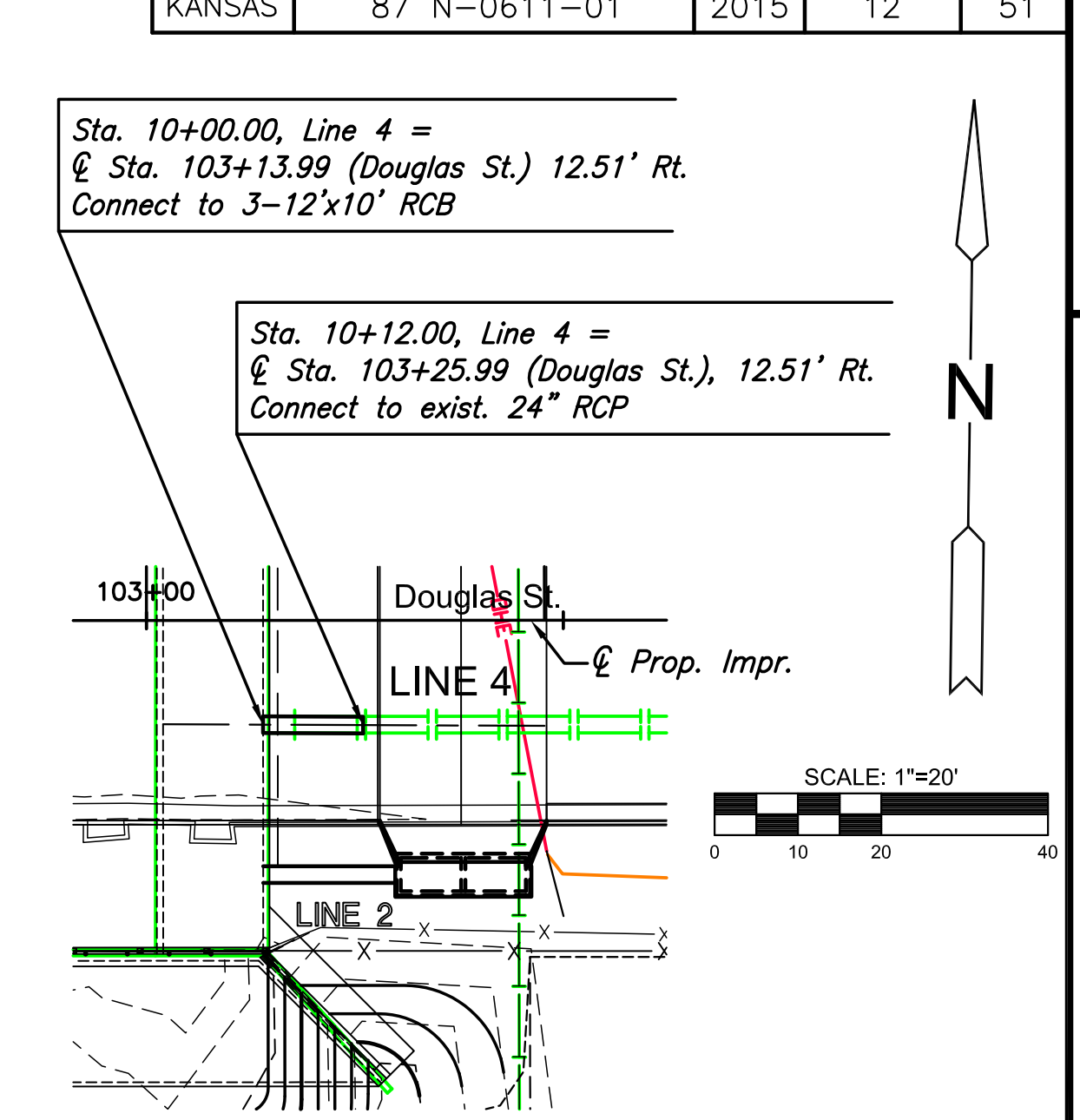
PLAN SWS LINE 1



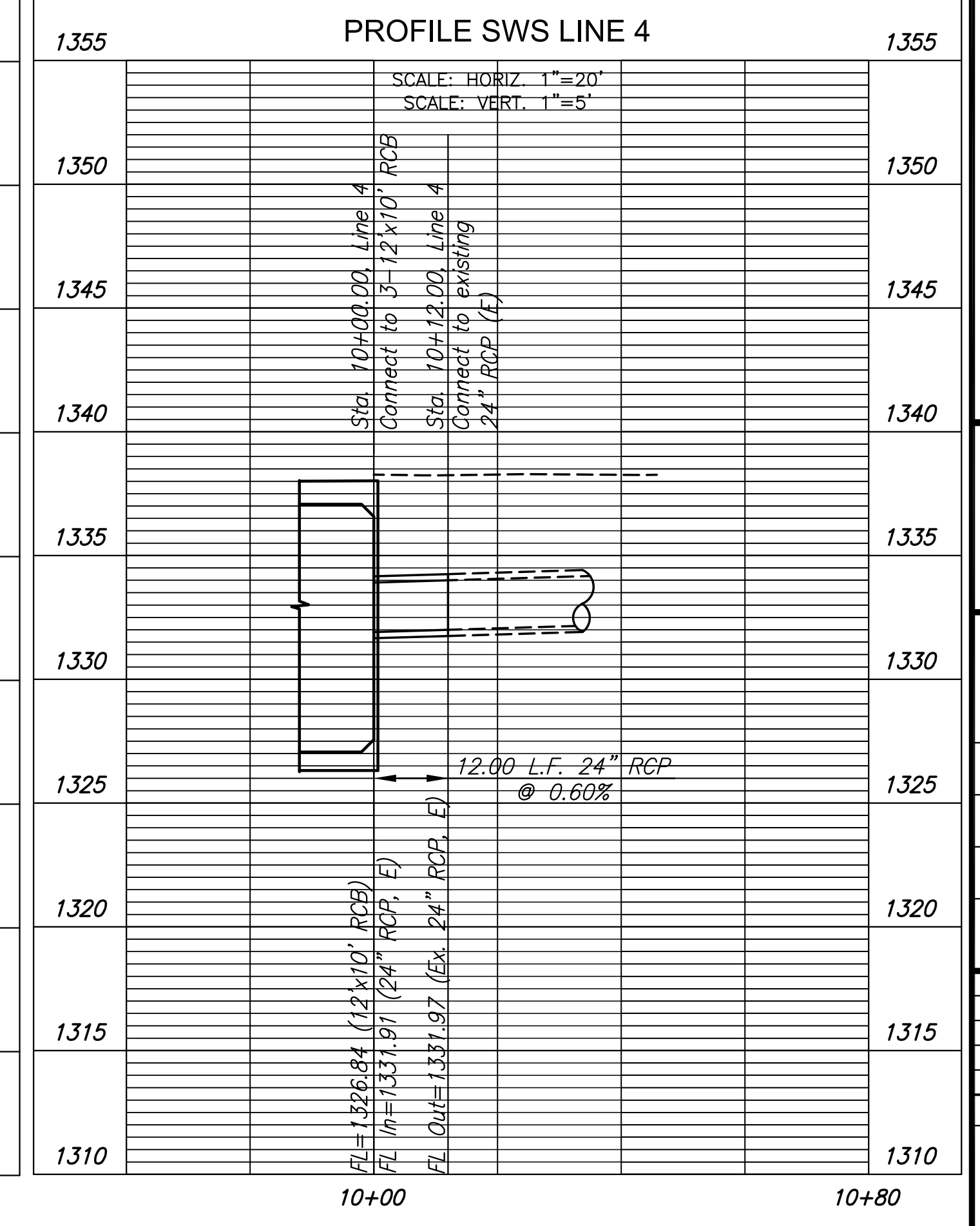
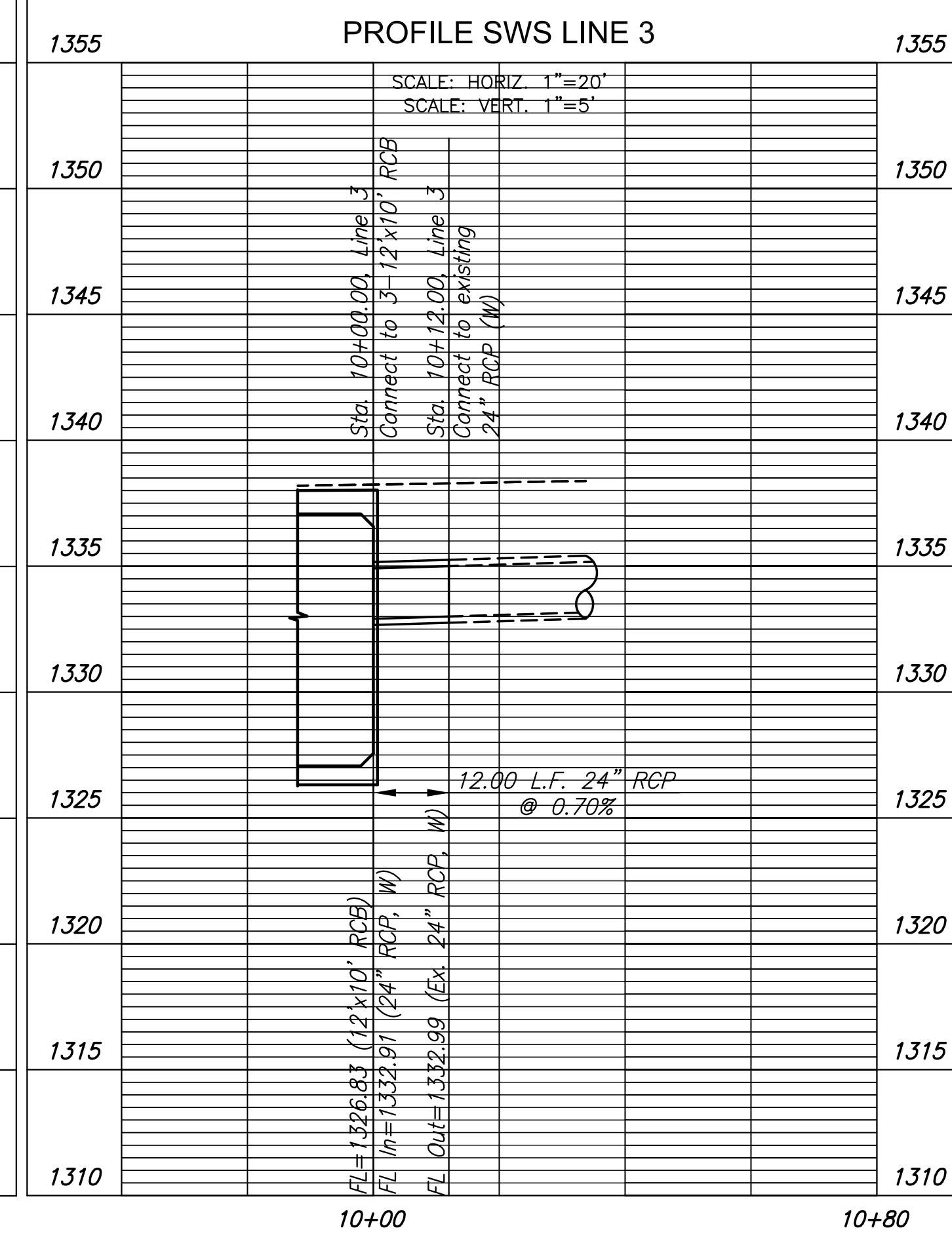
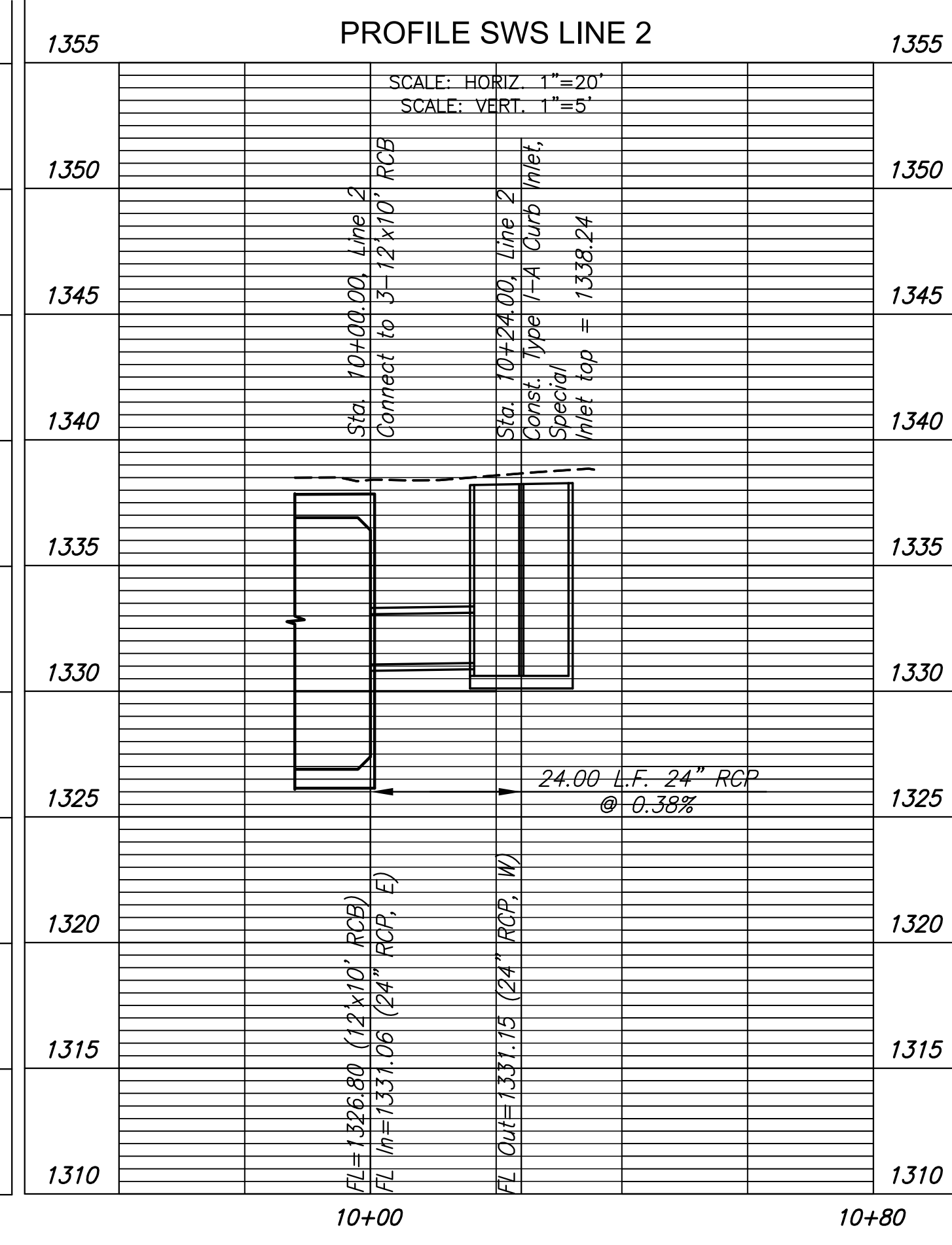
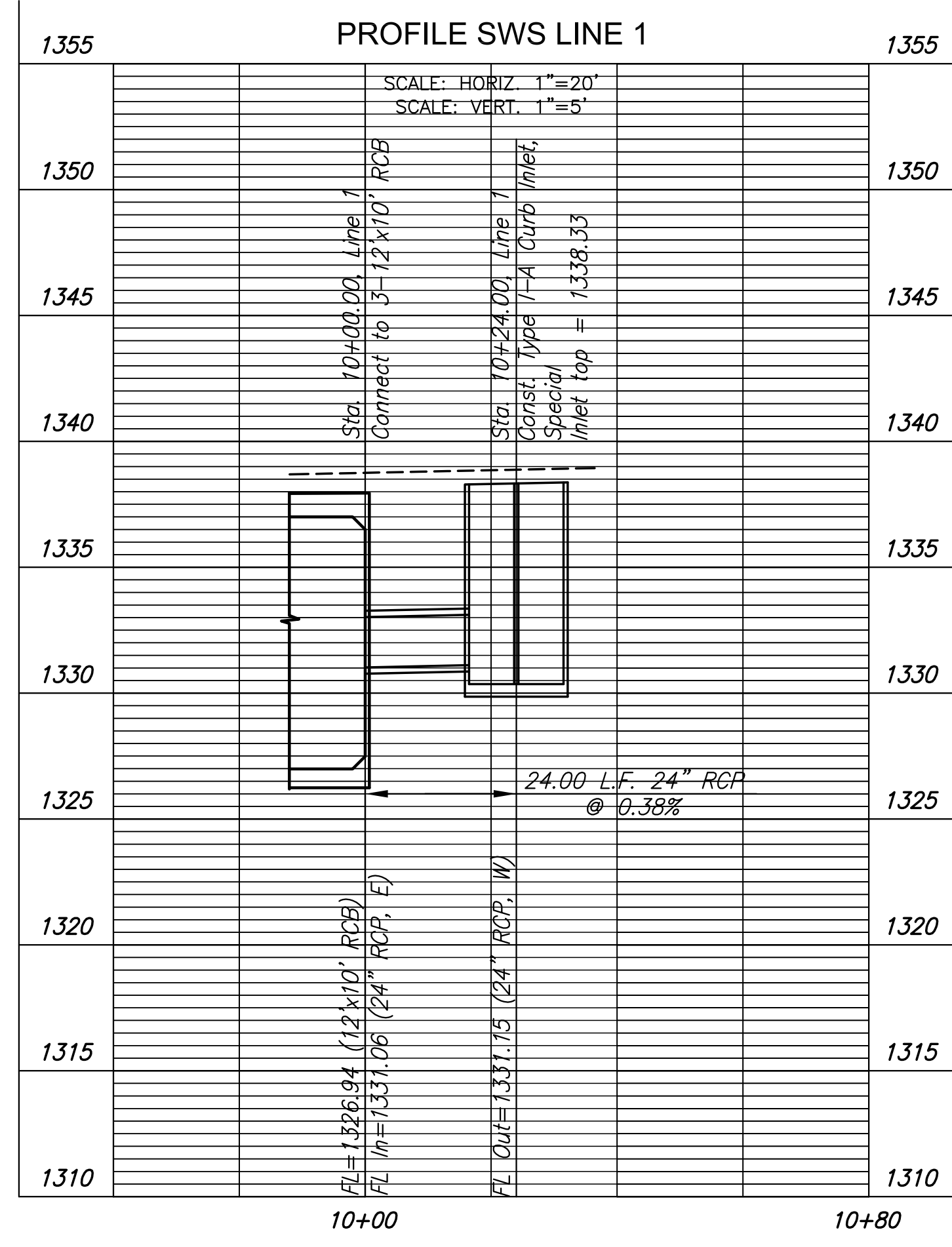
PLAN SWS LINE 2



PLAN SWS LINE 3



PLAN SWS LINE 4



CONSTRUCTION PLANS FOR  
**DOUGLAS AVENUE BRIDGE AT LINDEN**  
 WICHITA, KANSAS

©2015  
 MKEC Engineering  
 All Rights Reserved  
 www.mkec.com  
 These drawings and their contents,  
 including, but not limited to, all concepts,  
 designs, & ideas are the exclusive  
 property of MKEC Engineering (MKEC),  
 and may not be used or reproduced in any  
 way without the express consent of MKEC.

**STORM WATER  
 SEWER PLAN  
 AND PROFILE**

PROJECT NO.	472-85119	
DATE	FEB, 2014	
SCALE	#"=#	
DESIGNED	JRA	
DRAWN	JSB	
CHECKED	JRA	
NO.	REVISION	DATE

PLOTTED: Wednesday, September 10, 2014 @ 11:55AM  
 J:\PROJECTS\2013\1301046545\_DOUGLAS BRIDGE AT LINDEN\DWG\CAD\UTIL\13645B.P01.DWG



STATE	PROJECT NO.	YEAR	SHEET NO.	TOTAL SHEETS
KANSAS	87 N-0611-01	2015	38	51



PAVING & INCIDENTAL DRAINAGE FOR  
**DOUGLAS AVENUE BRIDGE**  
 AT LINDEN

©2013  
 MKEC Engineering  
 All Rights Reserved  
 www.mkec.com  
 These drawings and their contents, including, but not limited to, all concepts, designs, & ideas are the exclusive property of MKEC Engineering (MKEC), and may not be used or reproduced in any way without the express consent of MKEC.

**CONSTRUCTION SEQUENCE SUMMARY**

PROJECT NO.	472-85119	
DATE	FEB. 2014	
SCALE	NO SCALE	
DESIGNED	DRAWN	CHECKED
JRA	WNJ	JRA
NO.	REVISION	DATE

PHASING	HANDLING OF TRAFFIC	MAJOR CONSTRUCTION ITEMS	REMARKS
1	Erect traffic control closing the outside east-bound lane and to allow a single lane of east-bound traffic in the inside east-bound lane. Maintain two lane traffic west-bound throughout this construction phase.	Construct the temporary pavement widening and associated improvements necessary to accommodate traffic during Phase 2 of the project.	Remove fence west of bridge as necessary to accommodate temporary pavement widening and grading. Place removed portion of fence on Owner's property as directed. Cost is Subsidiary to "Removal of Existing Structures". Traffic control plans and details are provided in these plans.
2	Erect traffic control to allow a single lane of traffic in each direction in the south half of the project in accordance with the plans. Traffic shall utilize temporary pavement widening during this construction phase. Erect traffic control to close the Linden and Douglas intersection.	Construct north half of the bridge to the limits shown in the plans. Construct north half of the street to the limits shown including storm sewer improvements. Construct the valley gutter approach to Linden.	Traffic control plans and details are provided in these plans. Close the sidewalk as shown in these plans at the onset of the construction phase.
3	Erect traffic control to allow a single lane of traffic in each direction to utilize the newly completed construction on the north half of the project. Remove traffic control preventing the use of the Linden and Douglas intersection.	Construct the remaining portions of the bridge. Construct remaining portions of the street improvements including remaining storm sewers.	Traffic control plans and details are provided in these plans.
4	Provide localized traffic control appropriate to the specific construction activity being performed. Single lane closures will be allowed during this phase. Contractor shall utilize traffic control in accordance with the typical traffic control plans included in these plans.	Construct surface courses and install permanent pavement marking which has not yet been installed. Remove temporary markings prior to placing permanent markings. Perform all remaining work yet to be completed which will not require significant traffic control.	Contractor shall install and maintain traffic control as directed by the Engineer based on the specific construction activities implemented during this phase.

**TRAFFIC CONTROL GENERAL NOTES**

All signs and pavement markings conflicting with construction traffic control shall be covered or removed as directed by the Engineer. Quantities for replacement pavement markings have been estimated and included in pavement marking summary of quantities and will be paid for as part of "Pavement Markings". Sign removal and replacement has not been quantified and will be subsidiary to "Signing, Except Street Name Signs".

As the various construction activities progress, certain situations may arise that will preclude adhering to the original construction sequence or which, in the opinion of the Contractor, would readily adapt themselves to a more efficient phasing operation. Should this occur, the Contractor may submit to the Engineer an alternative plan for approval.

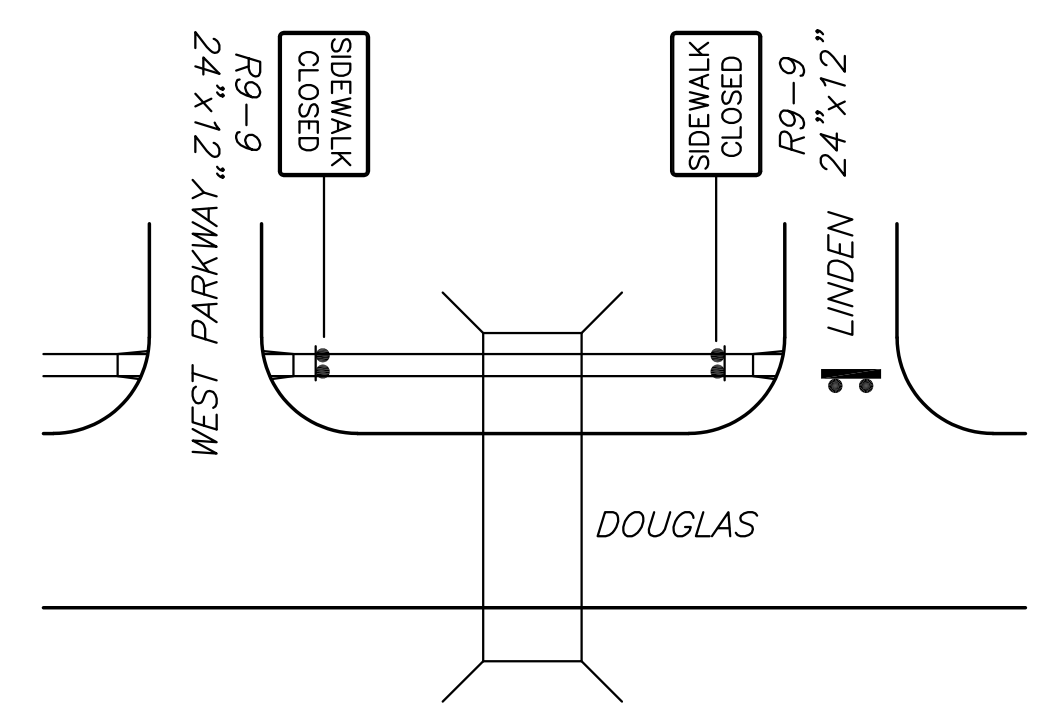
Contractor shall maintain existing drainage system during construction and address local drainage issues as necessary during construction. Temporary drainage measures will be subsidiary to other items in the contract. Contractor shall provide for drainage in sump areas opened to traffic. Ponded stormwater in sump areas will not be allowed.

Maintain access to all properties within the project limits at all times.

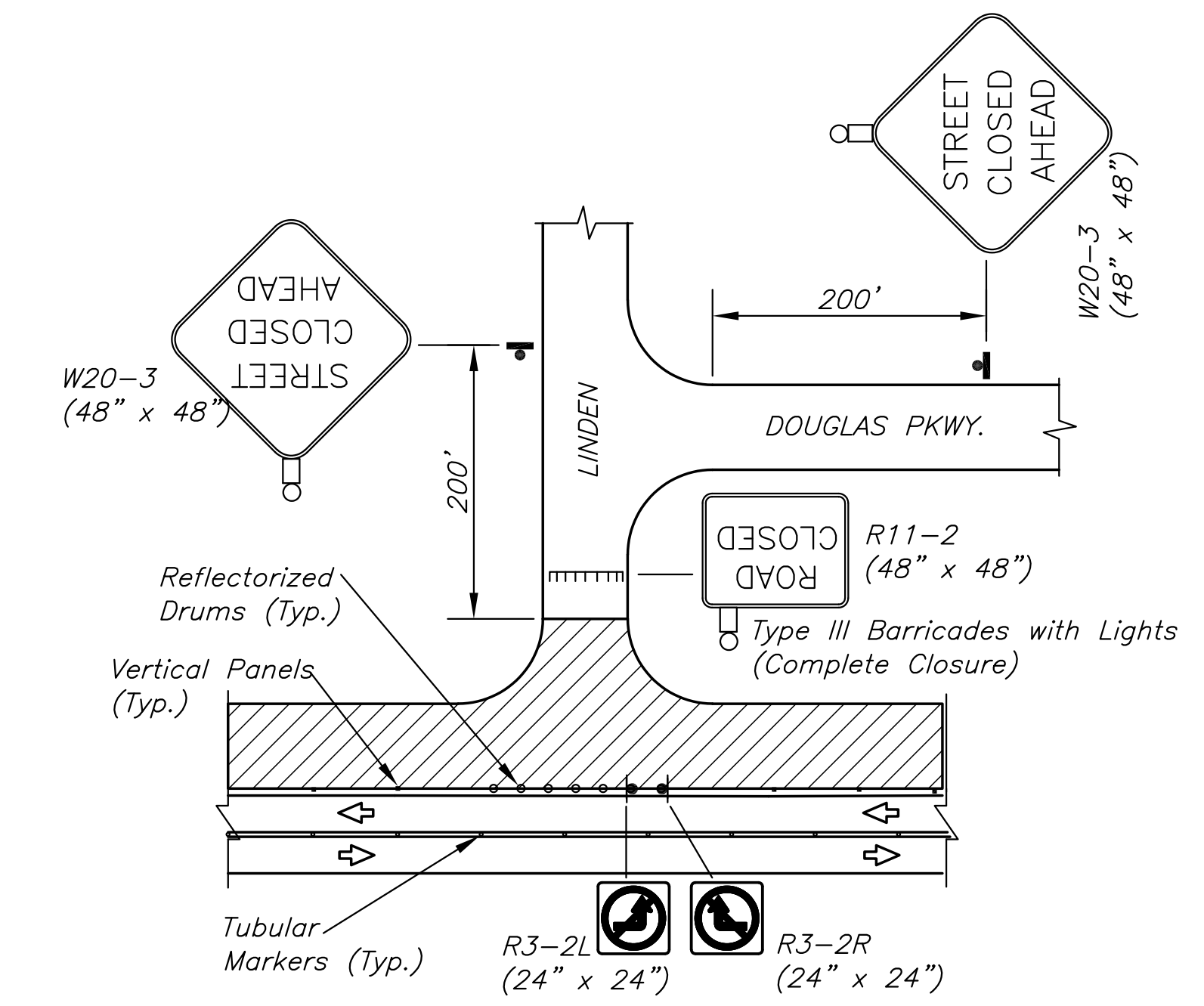
All traffic control signs and devices shall be in conformance with the latest edition of the Manual on Uniform Traffic Control Devices.

**LEGEND**

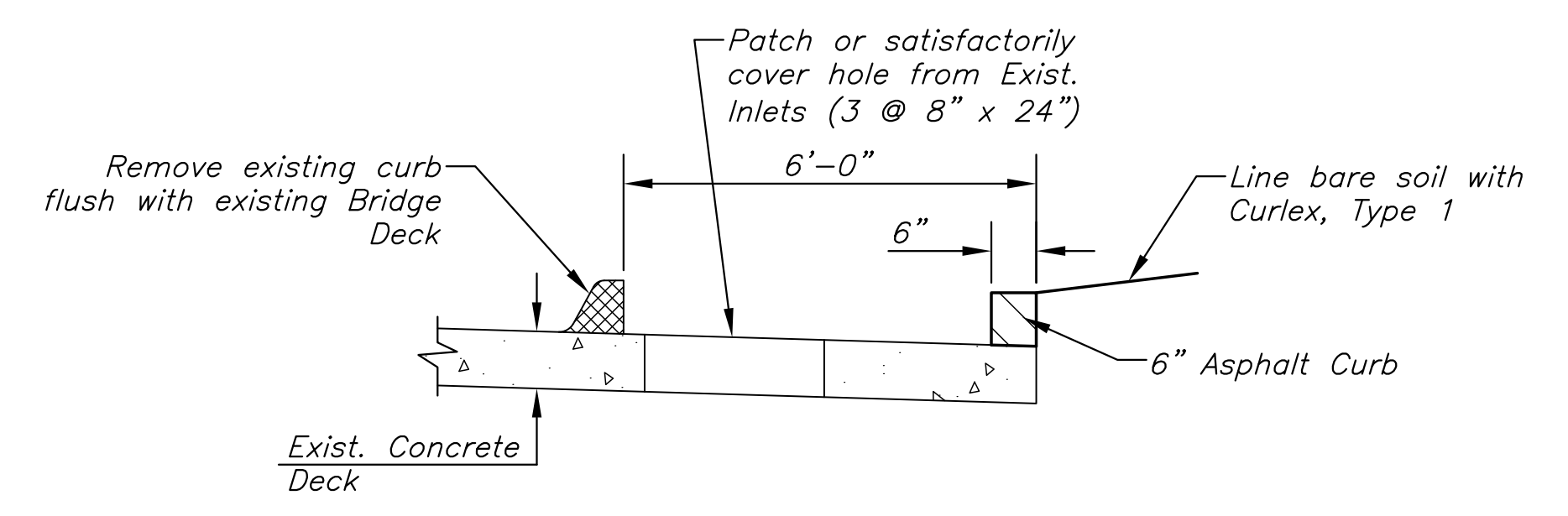
- |  |                                 |  |                                    |
|--|---------------------------------|--|------------------------------------|
|  | Type III Barricades with lights |  | Work Area                          |
|  | Mount On Type III Barricade     |  | ReflectORIZED Drum                 |
|  | Type B Warning Light            |  | Tubular Marker                     |
|  | One Post Sign                   |  | Vertical Panel                     |
|  | Two Post Sign                   |  | Mount Overhead on Signal Cross-arm |
|  | Traffic Flow                    |  |                                    |



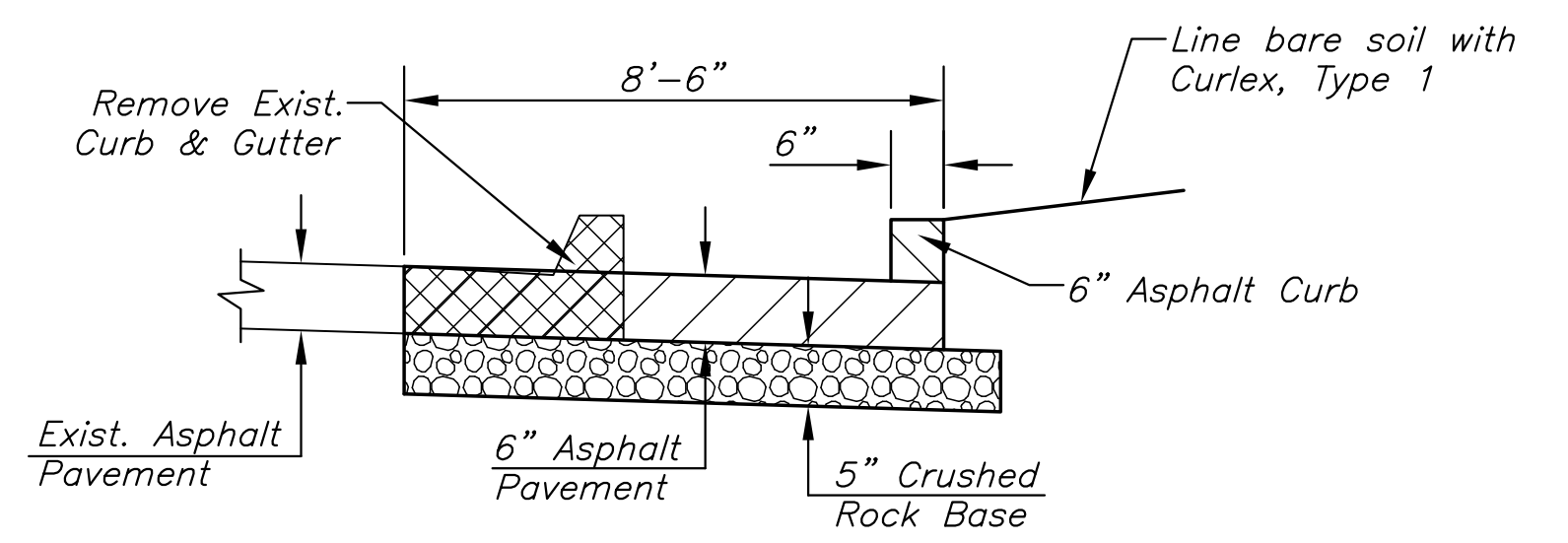
SIDEWALK CLOSURE PLAN (PH. 1-3)



LINDEN CLOSURE PLAN



Sta. 102+75.75 to Sta. 103+14.75



Sta. 101+73.26 to Sta. 102+75.75, RT.  
Sta. 103+14.75 to Sta. 104+28.39, RT.

Payment for "AC Pavement 6", Temporary will be measured per square yard of material placed. This bid item shall also include all work associated with preparation for placing the asphalt, constructing the rock base, patching the holes in the concrete deck, grading, slope lining and the eventual removal of the temporary pavement. The removal of existing curb on the bridge and cutting a drainage hole through the existing railing will be subsidiary to the bid item "Removal of existing Structures". Payment for the asphalt curb will be paid for as "AC Curb 6", Temporary" and will include costs for its eventual removal.

**TEMPORARY ASPHALT WIDENING SECTIONS**

STATE	PROJECT NO.	YEAR	SHEET NO.	TOTAL SHEETS
KANSAS	87 N-0611-01	2015	39	51



CONSTRUCTION PLANS FOR  
**DOUGLAS AVENUE BRIDGE AT LINDEN**  
 WICHITA, KANSAS

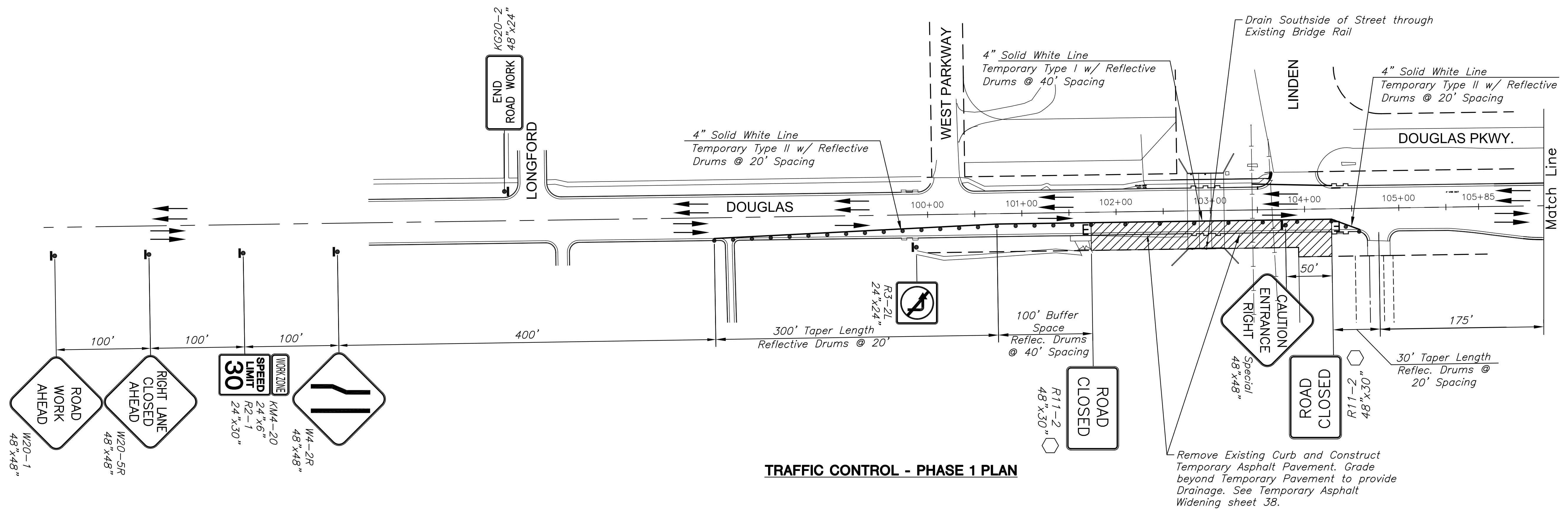
©2013 MKEC Engineering All Rights Reserved  
 www.mkec.com  
 These drawings and their contents, including, but not limited to, all concepts, designs, & ideas are the exclusive property of MKEC Engineering (MKEC), and may not be used or reproduced in any way without the express consent of MKEC.

SHEET TITLE 1  
 SHEET TITLE 2  
 SHEET TITLE 3

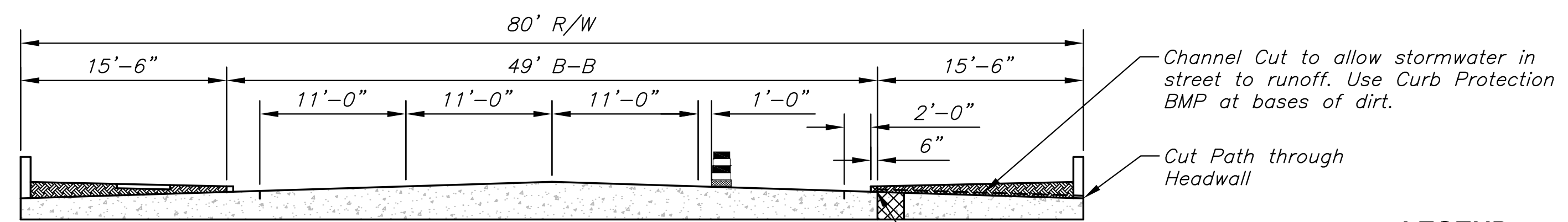
PROJECT NO.	472-85119	
DATE	FEB. 2014	
SCALE	#"=#	
DESIGNED	DRAWN	CHECKED
JRA	JSB	JRA

NO.	REVISION	DATE

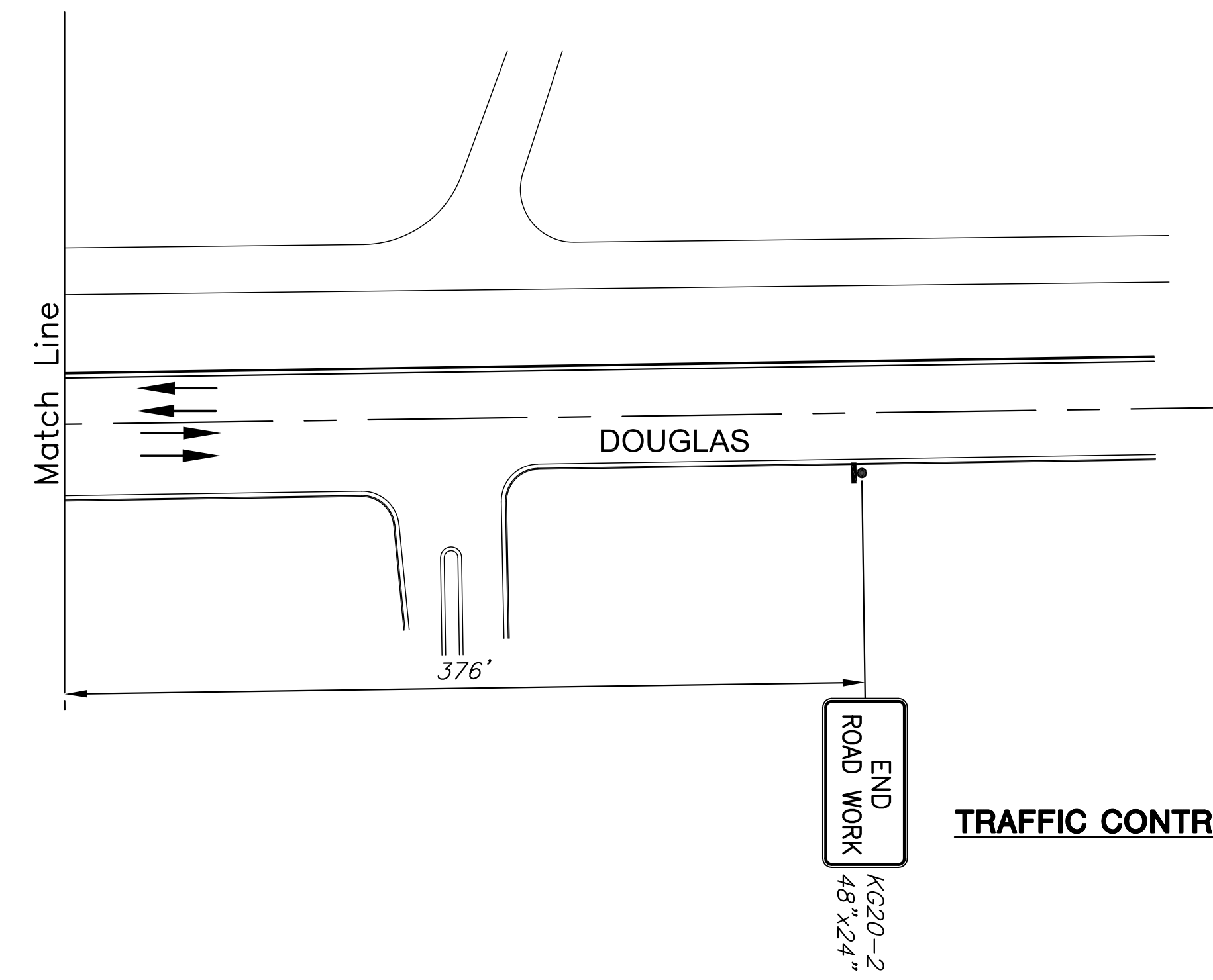
SHEET NO.  
 39 OF 51



**TRAFFIC CONTROL - PHASE 1 PLAN**



**TRAFFIC CONTROL - PHASE 1 SECTION**



**TRAFFIC CONTROL - PHASE 1 PLAN**

- LEGEND**
- >>> Arrow Display
  - ||||| Type III Barricade
  - ⬡ Mount on Type III Barricade
  - Channelizer
  - Temporary Concrete Safety Barrier
  - ▨ Work Area
  - Traffic Flow
  - ⬡ Temporary Concrete Safety Barrier pinned to Roadway
  - ▨ Temporary Asphalt Pavement

PLOTTED: Wednesday, September 10, 2014 @ 10:17 AM  
 J:\PROJECTS\2013\1301040545\_DOUGLAS BRIDGE AT LINDEN\CIVIL\CAD\UTL\13645T01A.DWG

PLOTTED: Wednesday, September 10, 2014 @ 10:15AM  
 J:\PROJECTS\2013\1301040545\_DOUGLAS BRIDGE AT LINDEN\CIVIL\CAD\UTL\1304545T01.DWG

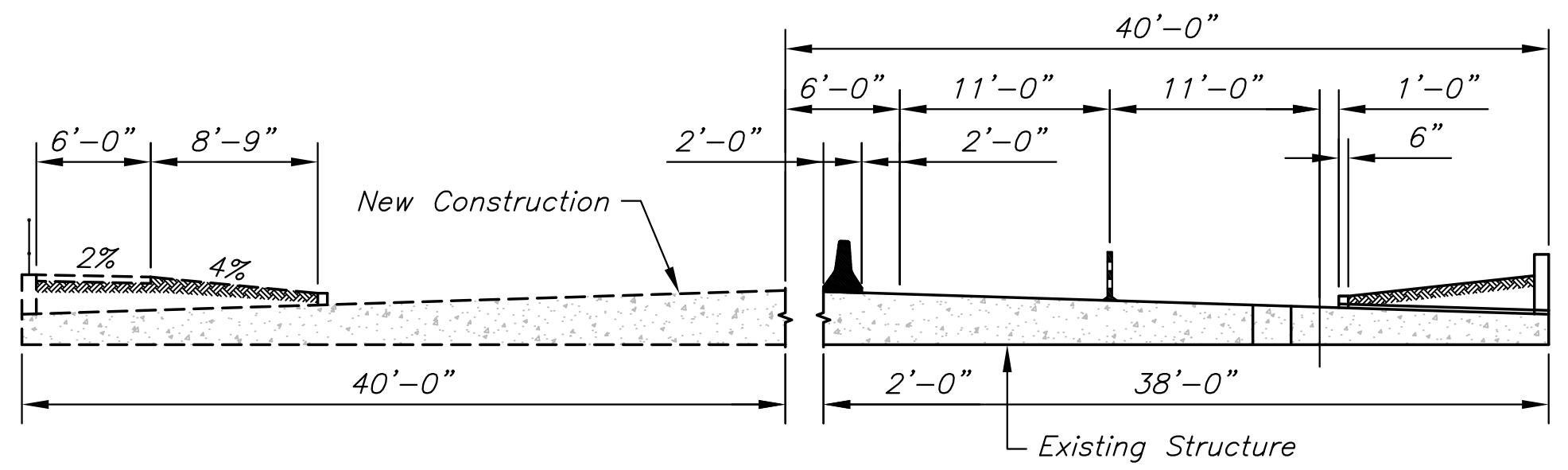
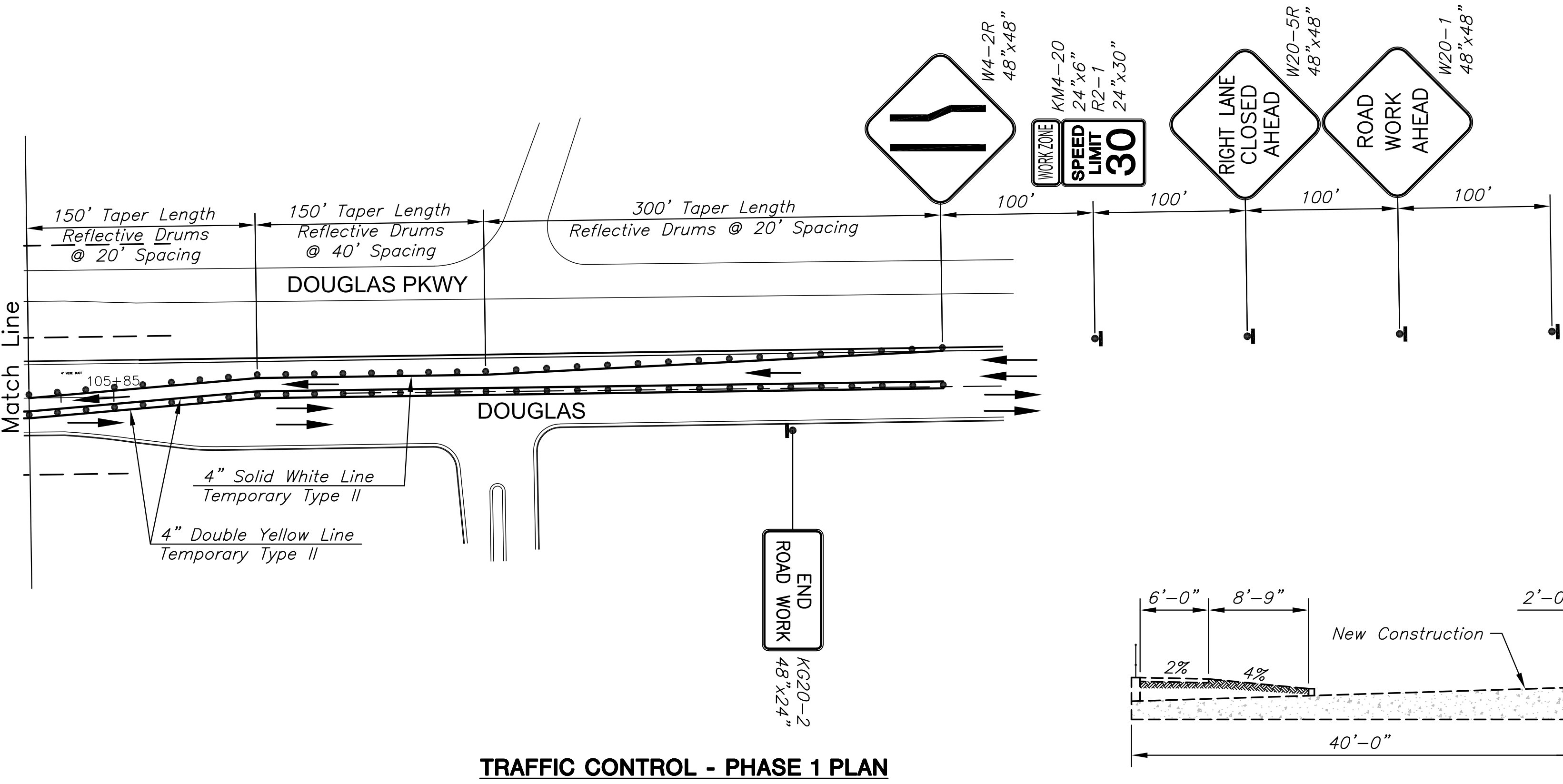
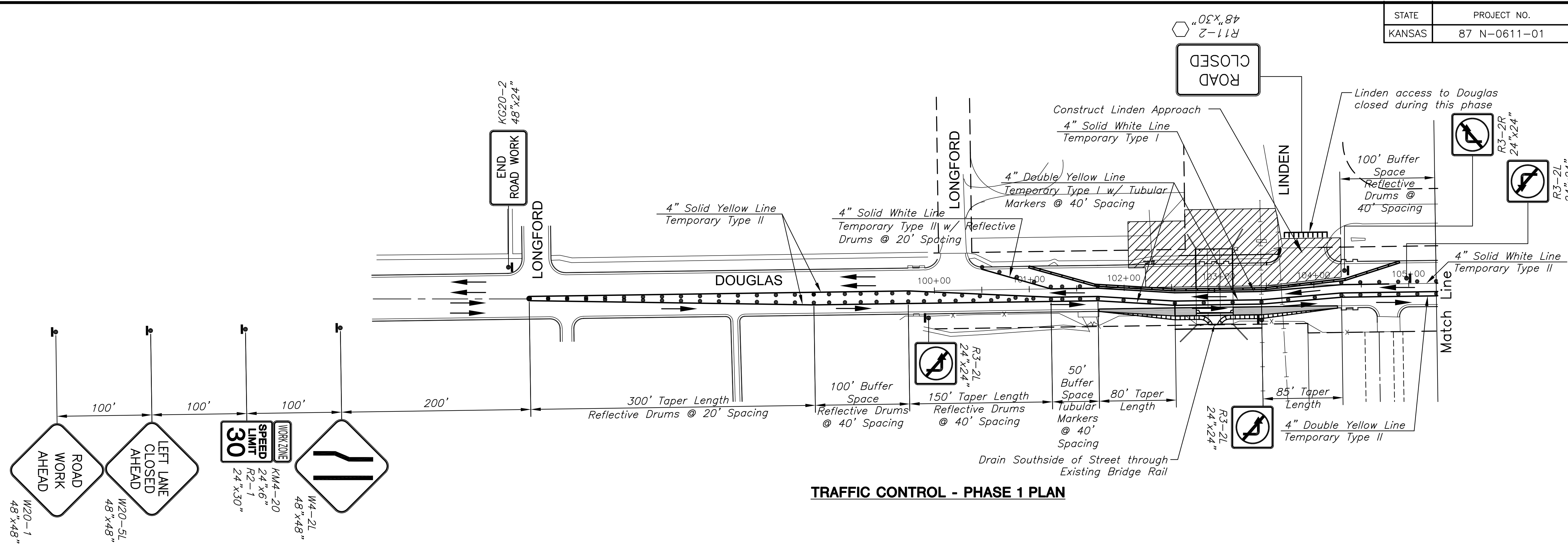
STATE	PROJECT NO.	YEAR	SHEET NO.	TOTAL SHEETS
KANSAS	87 N-0611-01	2015	40	51



CONSTRUCTION PLANS FOR  
**DOUGLAS AVENUE BRIDGE AT LINDEN**  
 WICHITA, KANSAS

©2013 MKEC Engineering All Rights Reserved  
 www.mkec.com  
 These drawings and their contents, including, but not limited to, all concepts, designs, & ideas are the exclusive property of MKEC Engineering (MKEC), and may not be used or reproduced in any way without the express consent of MKEC.

TRAFFIC CONTROL PLAN-PHASE 2		
PROJECT NO.	472-85119	
DATE	FEB. 2014	
SCALE	1"=60'	
DESIGNED	DRAWN	CHECKED
JRA	JSB	JRA
NO.	REVISION	DATE
SHEET NO.		
40 OF 51		



**LEGEND**

>>>	Arrow Display
	Type III Barricade
○	Mount on Type III Barricade
●	Channelizer
—	Temporary Concrete Safety Barrier
▨	Work Area
→	Traffic Flow
⬇	Temporary Concrete Safety Barrier pinned to Roadway
■	Temporary Asphalt Pavement

STATE	PROJECT NO.	YEAR	SHEET NO.	TOTAL SHEETS
KANSAS	87 N-0611-01	2015	41	51



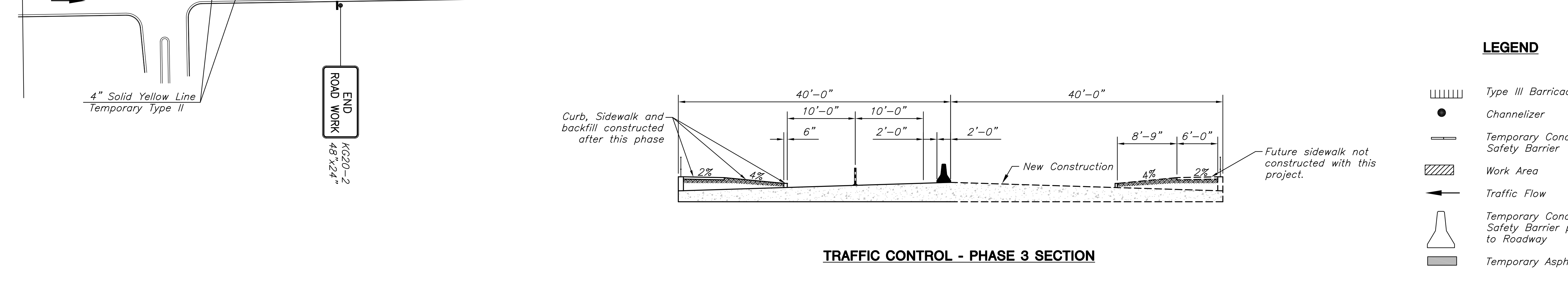
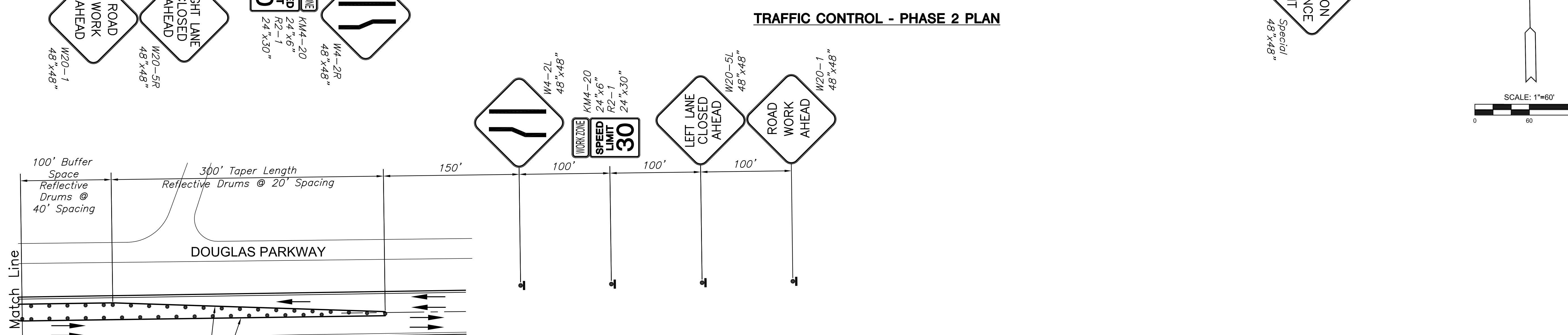
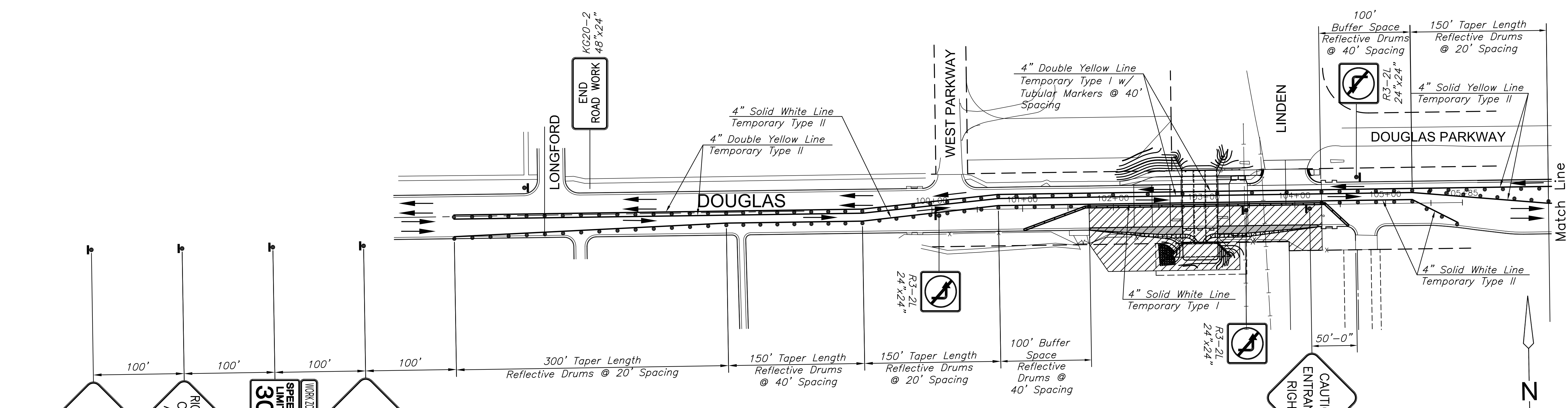
CONSTRUCTION PLANS FOR  
**DOUGLAS AVENUE BRIDGE AT LINDEN**  
 WICHITA, KANSAS

©2013 MKEC Engineering All Rights Reserved  
 www.mkec.com  
 These drawings and their contents, including, but not limited to, all concepts, designs, & ideas are the exclusive property of MKEC Engineering (MKEC), and may not be used or reproduced in any way without the express consent of MKEC.

**TRAFFIC CONTROL PLAN-PHASE 3**

PROJECT NO.	472-85119	
DATE	FEB. 2014	
SCALE	1"=60'	
DESIGNED	DRAWN	CHECKED
JRA	JSB	JRA
NO.	REVISION	DATE

SHEET NO.  
41 OF 51

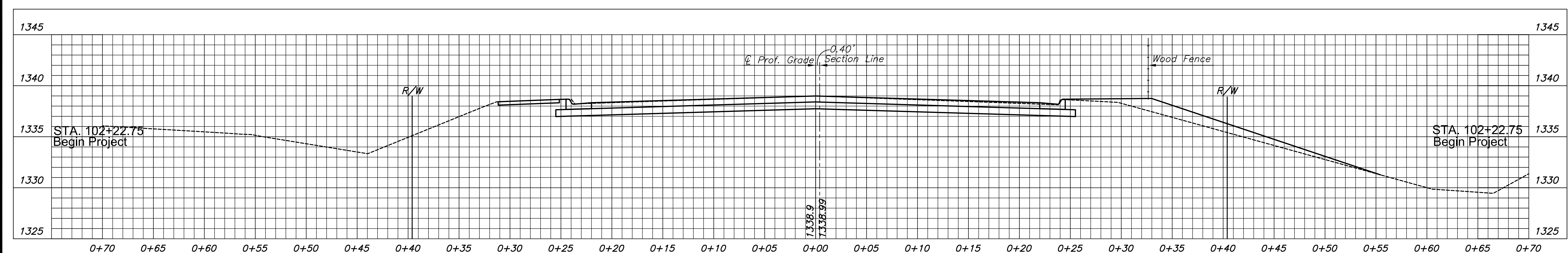
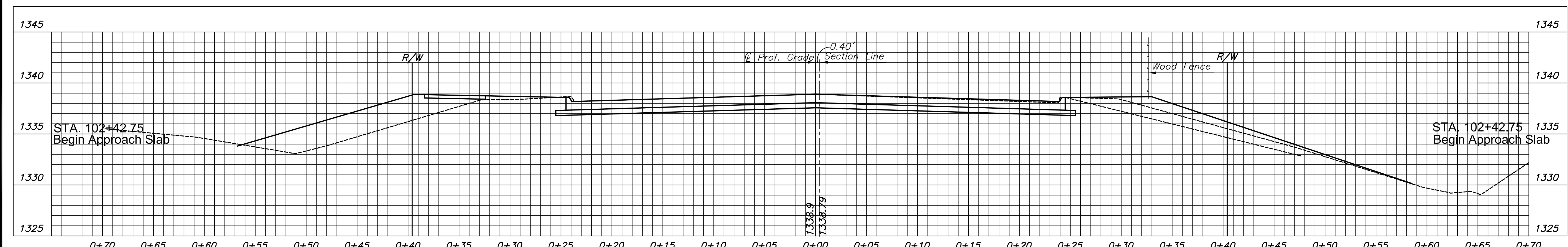
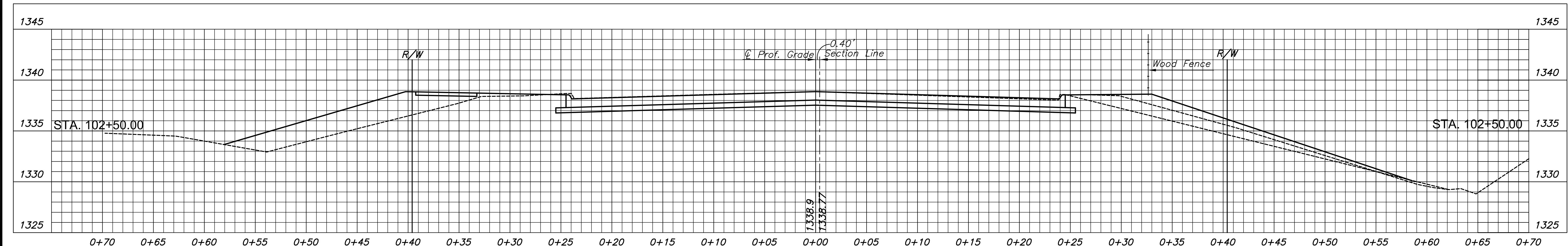
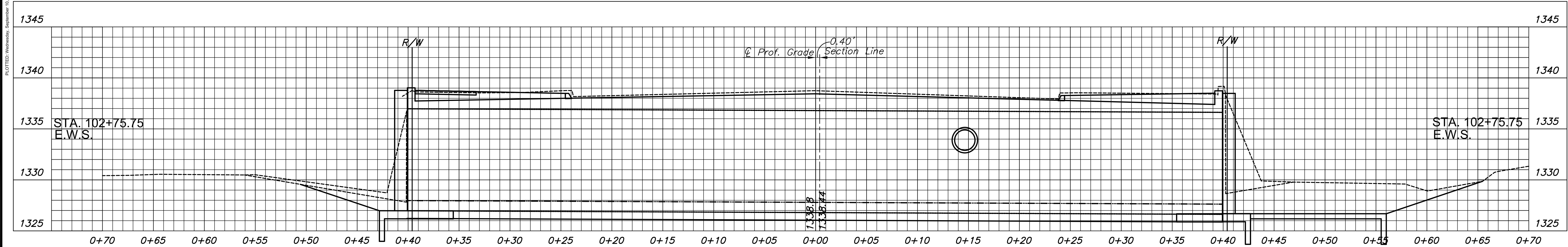


PLOTTED: Wednesday, September 10, 2014 @ 8:21 PM  
 J:\PROJECTS\2013\1301040545\_DOUGLAS BRIDGE AT LINDEN\CIVIL\CAD\UTIL\13645T02.DWG

STATE	PROJECT NO.	YEAR	SHEET NO.	TOTAL SHEETS
KANSAS	87 N-0611-01	2015	52	51



CONSTRUCTION PLANS FOR  
**DOUGLAS AVENUE BRIDGE AT LINDEN**  
 WICHITA, KANSAS



©2013  
 MKEC Engineering  
 All Rights Reserved  
 www.mkec.com  
 These drawings and their contents, including, but not limited to, all concepts, designs, & ideas are the exclusive property of MKEC Engineering (MKEC), and may not be used or reproduced in any way without the express consent of MKEC.

**CROSS-SECTIONS**  
 STA. 102+22.75 TO  
 STA. 102+75.75

PROJECT NO.	472-85119	
DATE	FEB. 2014	
SCALE	1"=5'	
DESIGNED	DRAWN	CHECKED
JRA	DPG	JRA

NO.	REVISION	DATE

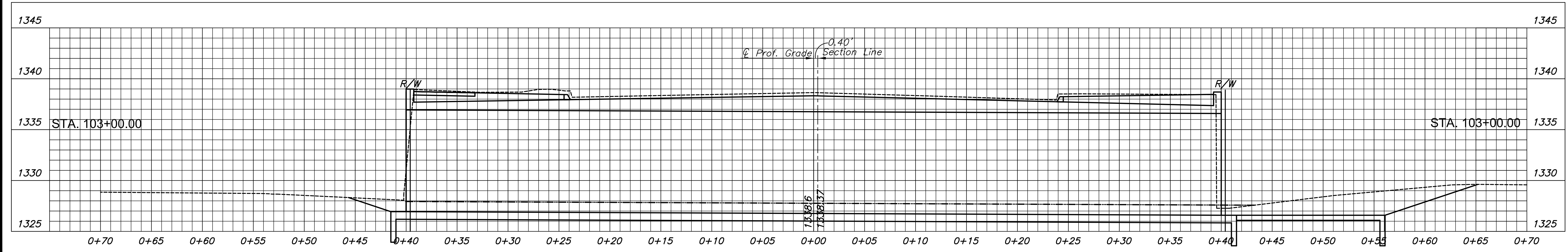
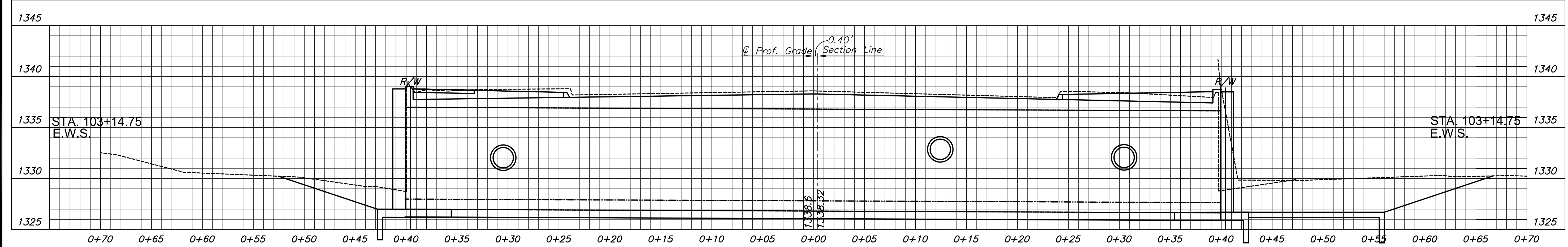
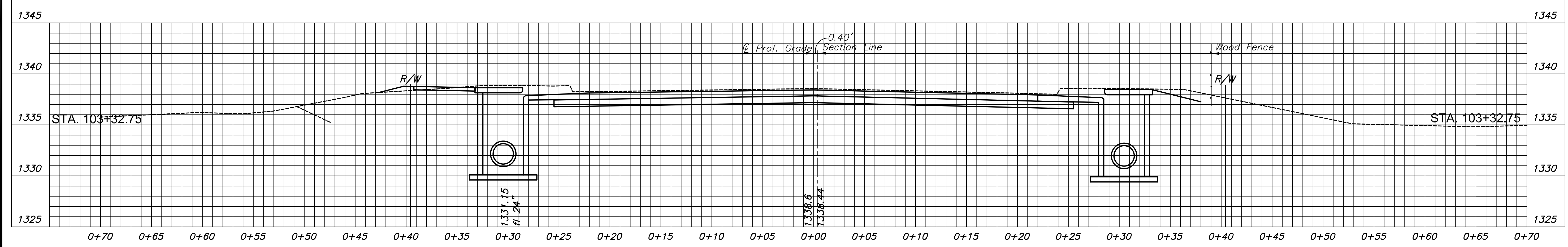
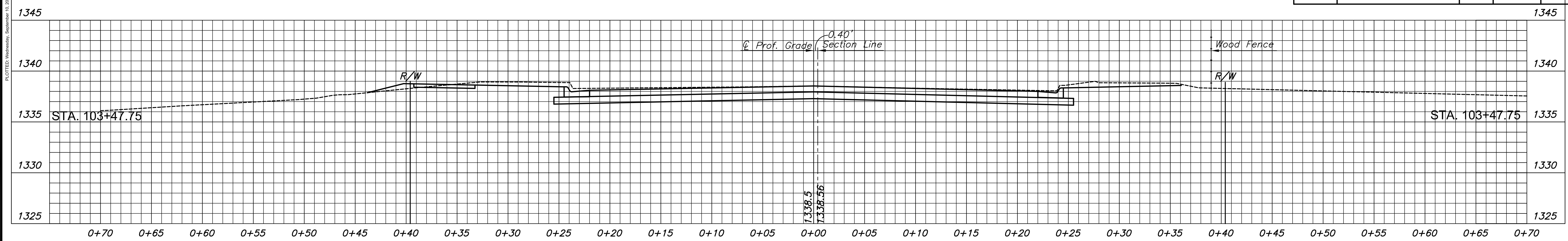
SHEET NO.  
 52 OF 51

PLOTTED: Wednesday, September 10, 2014 @ 10:28AM

STATE	PROJECT NO.	YEAR	SHEET NO.	TOTAL SHEETS
KANSAS	87 N-0611-01	2015	53	51



CONSTRUCTION PLANS FOR  
**DOUGLAS AVENUE BRIDGE AT LINDEN**  
 WICHITA, KANSAS



©2013 MKEC Engineering  
 All Rights Reserved  
 www.mkec.com  
 These drawings and their contents, including, but not limited to, all concepts, designs, & ideas are the exclusive property of MKEC Engineering (MKEC), and may not be used or reproduced in any way without the express consent of MKEC.

**CROSS-SECTIONS  
STA. 103+00.00 TO  
STA. 103+47.75**

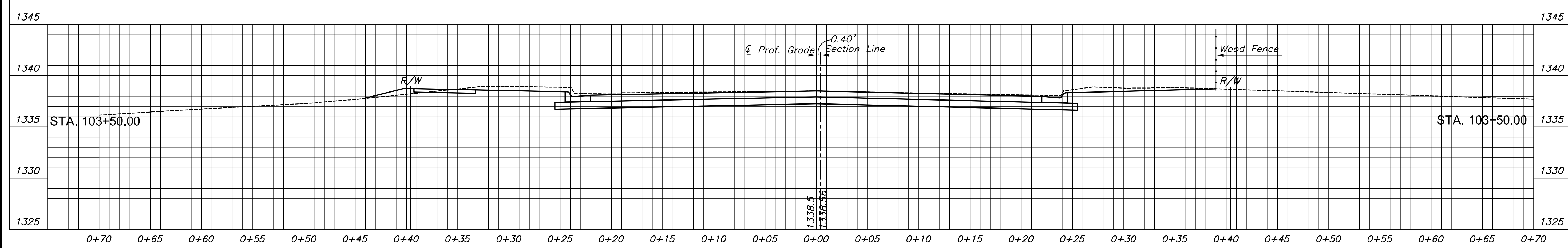
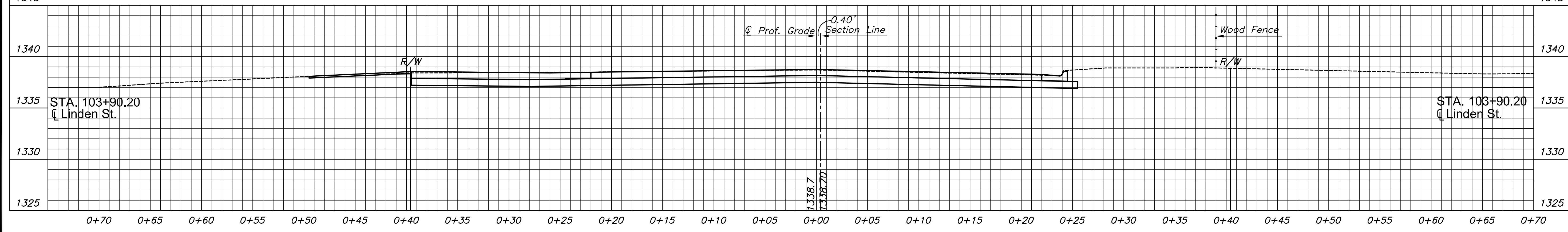
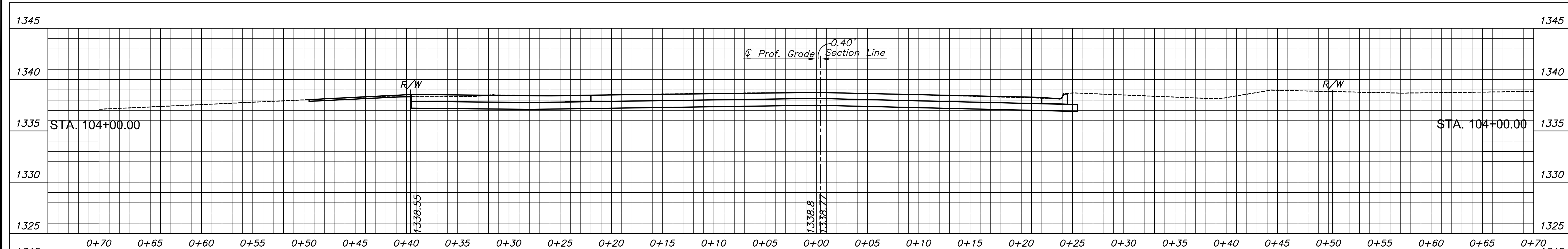
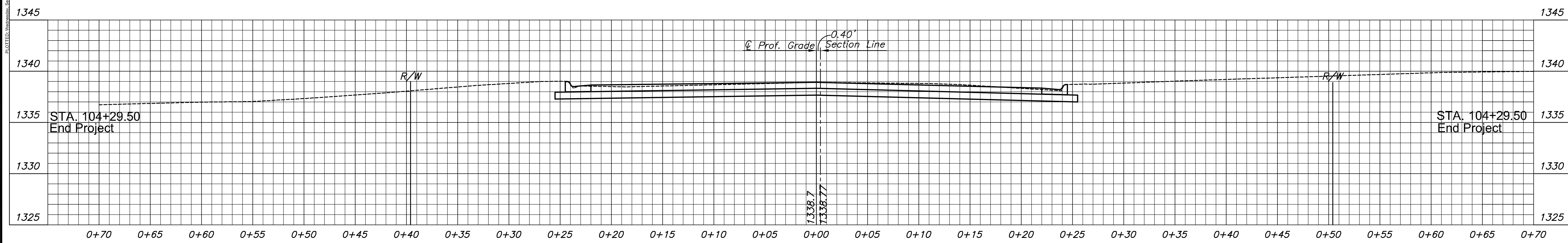
PROJECT NO.	472-85119	
DATE	FEB. 2014	
SCALE	1"=5'	
DESIGNED	DRAWN	CHECKED
JRA	DPG	JRA

NO.	REVISION	DATE

STATE	PROJECT NO.	YEAR	SHEET NO.	TOTAL SHEETS
KANSAS	87 N-0611-01	2015	54	51



CONSTRUCTION PLANS FOR  
**DOUGLAS AVENUE BRIDGE AT LINDEN**  
 WICHITA, KANSAS



©2013  
 MKEC Engineering  
 All Rights Reserved  
 www.mkec.com  
 These drawings and their contents, including, but not limited to, all concepts, designs, & ideas are the exclusive property of MKEC Engineering (MKEC), and may not be used or reproduced in any way without the express consent of MKEC.

**CROSS-SECTIONS**  
 STA. 103+50.00 TO  
 STA. 104+29.50

PROJECT NO.	472-85119	
DATE	FEB. 2014	
SCALE	1"=5'	
DESIGNED	DRAWN	CHECKED
JRA	DPG	JRA

NO.	REVISION	DATE