

PLOTTED: Wednesday, September 10, 2014 10:52:57 AM

J:\PROJECTS\2013\10104064\DOUGLAS BRIDGE AT LINDEN\CIVIL\CAD\UTL113548EPV1.DWG

Control Point #13

1. Set 5/8" rebar with red "MKEC Control Point" cap in sidewalk
2. Sta. 100+55.45, 28.02' Lt. N 1686410.929, E 1678534.085
3. SE side firehydrant 9.0' NW
4. Centerline of Douglas St. 28.0' S
5. Bend in south side of sidewalk 6.5' SE

Control Point #11

1. Set 5/8" rebar with red "MKEC Control Point" cap in asphalt
2. Sta. 103+69.13, 40.38' Lt. N 1686427.836, E 1678847.555
3. SE corner of stone sign 18.0' NW
4. Concrete/Asphalt edge line 1.3' S
5. NE end of sidewalk ramp 2.81' SW

Control Point #10

1. Set 5/8" rebar with red "MKEC Control Point" cap in asphalt
2. Sta. 103+84.67, 135.12' Lt. N 1686522.793, E 1678861.725
3. Lightpole at south end of island Linden Dr. 19.0' N
4. West edge asphalt Linden Drive 34.0' W
5. East edge asphalt Linden Drive 33.0' E

STATE	PROJECT NO.	YEAR	SHEET NO.	TOTAL SHEETS
KANSAS	87 N-0611-01	2015	4	51



NE 1/4 Sec. 20, T27S, R2E

NE 1/4 Sec. 20, T27S, R2E

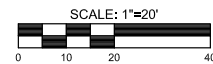
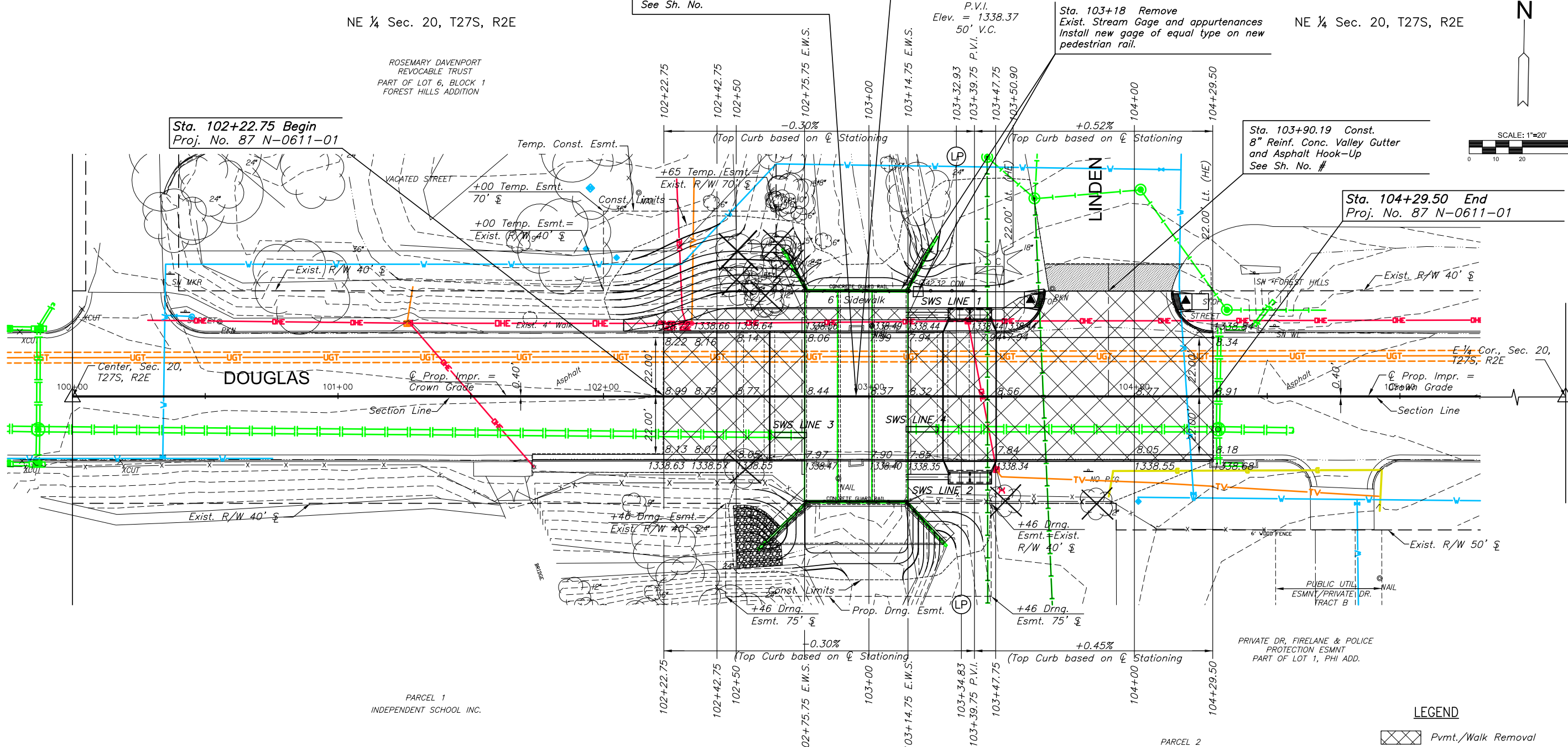
Sta. 102+95.25 Const.
Br. No. 53040087000615E
3-12'x10'x80.0' RFB w/apron, Rt.
78'-6" Roadway
See Sh. No.

Sta. 102+95.25 Remove
Br. No. 53040087000614
3-12'x10'x80.0' RCB
78'-6" Roadway

Sta. 103+18 Remove
Exist. Stream Gage and appurtenances
Install new gage of equal type on new
pedestrian rail.

Sta. 103+90.19 Const.
8" Reinf. Conc. Valley Gutter
and Asphalt Hook-Up
See Sh. No. #

Sta. 104+29.50 End
Proj. No. 87 N-0611-01



ROSEMARY DAVENPORT
REVOCABLE TRUST
PART OF LOT 6, BLOCK 1
FOREST HILLS ADDITION

Sta. 102+22.75 Begin
Proj. No. 87 N-0611-01

DOUGLAS
Center, Sec. 20,
T27S, R2E

LINDEN

SE 1/4 Sec. 20, T27S, R2E

PARCEL 1
INDEPENDENT SCHOOL INC.

PARCEL 2
DEDICATION & EASEMENT
PART OF LOT 1, PHI ADD.

P.V.I.
Elev. = 1338.28
50' V.C.

LEGEND

	Pvmt./Walk Removal
	Asphalt Hookup
	Construct Wheelchair Ramp
	Tree Removal

BM#1 City of Wichita benchmark disc in top of concrete bridge rail at northeast corner of project RCB
Sta. 103+14.62', 39.70' Lt. Elev. 1342.32

REMOVAL OF EXISTING STRUCTURE: The Contractor shall remove the existing concrete RCB and wings. All materials shall become the property of the Contractor and shall be removed from the project site by the Contractor.

CONSTRUCTION PLANS FOR
DOUGLAS AVENUE BRIDGE AT LINDEN
WICHITA, KANSAS

©2013 MKEC Engineering All Rights Reserved
www.mkec.com
These drawings and their contents, including, but not limited to, all concepts, designs, & ideas are the exclusive property of MKEC Engineering (MKEC), and may not be used or reproduced in any way without the express consent of MKEC.

PAVING PLAN SHEET		
PROJECT NO.	472-85119	
DATE	FEB. 2014	
SCALE	1"=40'	
DESIGNED	DRAWN	CHECKED
JRA	JSB	JRA
NO.	REVISION	DATE
SHEET NO.		
4 OF 51		