

PLOTTER: Redundant September 16, 2014 @ 01:17:14

INDEX TO DRAWINGS

SHEET NO.	DESCRIPTION
1	TITLE SHEET
3	TYPICAL SECTIONS
4	PAVING PLAN
#	CURB & GUTTER DETAILS (NOT INCLUDED IN SET)
#	WHEELCHAIR RAMP DETAILS (NOT INCLUDED IN SET)
12	STORM SEWER PLAN AND PROFILE
#	INLET DETAILS (NOT INCLUDED IN SET)
#	MANHOLE/INLET FRAME AND COVER DETAILS (NOT INCLUDED IN SET)
#	CURB INLET PAVEMENT UNDERDRAIN DETAILS (NOT INCLUDED IN SET)
18	BRIDGE CONTOUR MAP
#	RCB AUXILIARY DETAILS (LRFD) (NOT INCLUDED IN SET)
#	PRECAST CONCRETE BOX CULVERT DETAILS (NOT INCLUDED IN SET)
#	BRIDGE EXCAVATION (LRFD) (NOT INCLUDED IN SET)
#	SUPPORTS AND SPACERS FOR REINFORCING STEEL (NOT INCLUDED IN SET)
#	EROSION CONTROL BMP DETAILS (NOT INCLUDED IN SET)
#	PAVEMENT MARKING AND SIGNING PLAN (NOT INCLUDED IN SET)
#	SIGNING DETAILS (NOT INCLUDED IN SET)
38-41	TRAFFIC CONTROL PLANS
#	TRAFFIC CONTROL DETAILS (NOT INCLUDED IN SET)
#	TEMPORARY CONCRETE SAFETY BARRIER DETAILS (NOT INCLUDED IN SET)
#	PROJECT DRAINAGE MAP (NOT INCLUDED IN SET)
52-54	CROSS SECTIONS

DESIGN DESIGNATION

AADT (2010)	= 12,050
AADT (2030)	= 14,703
DHV	= 10%
D	= 60%
T	= 3%
V	= 40 MPH
C of A	= None
Clear Zone	= 6 FT.

CONVENTIONAL SIGNS

COUNTY LINE	-----	CENTER LINE OF PROJECT	-----
CITY LIMITS	=====	TERRACE	-----
STATE OR NATIONAL LINE	-----	CULVERTS	-----
TOWNSHIP, SECTION or GRANT LINE	-----	DROP INLET & STORM SEWER	-----
PROPERTY LINE	-----	ACCESS CONTROL	-----
HIGHWAY FENCE	-----	POWER POLE	-----
EXISTING FENCE	-----	TELEPHONE POLE	-----
GUARDRAIL	-----	MARSH	-----
CONSTRUCTION LIMITS	-----	HEDGE	-----
RIGHT OF WAY LINE	-----	TREES	-----
TRAVELED WAY	-----	PROFILE ELEVATION	-----
RAILROADS	-----	STREAM or CREEK	-----

GROSS LENGTH OF PROJECT	206.75	FT.
EXCEPTIONS	0.00	FT.
ADDITIONS	0.00	FT.
NET LENGTH OF PROJECT	206.75	FT. 0.039 MILES
NET LENGTH OF BRIDGES	39.00	FT. 0.007 MILES
NET LENGTH OF ROAD	167.75	FT. 0.032 MILES

LEGEND

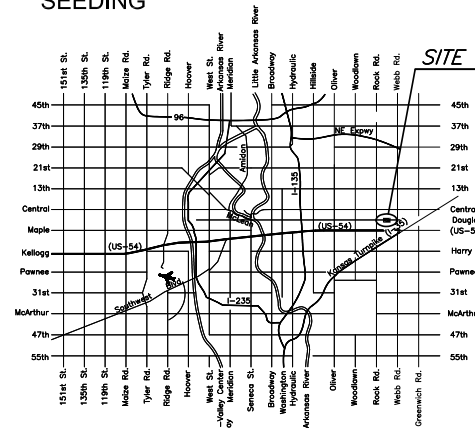
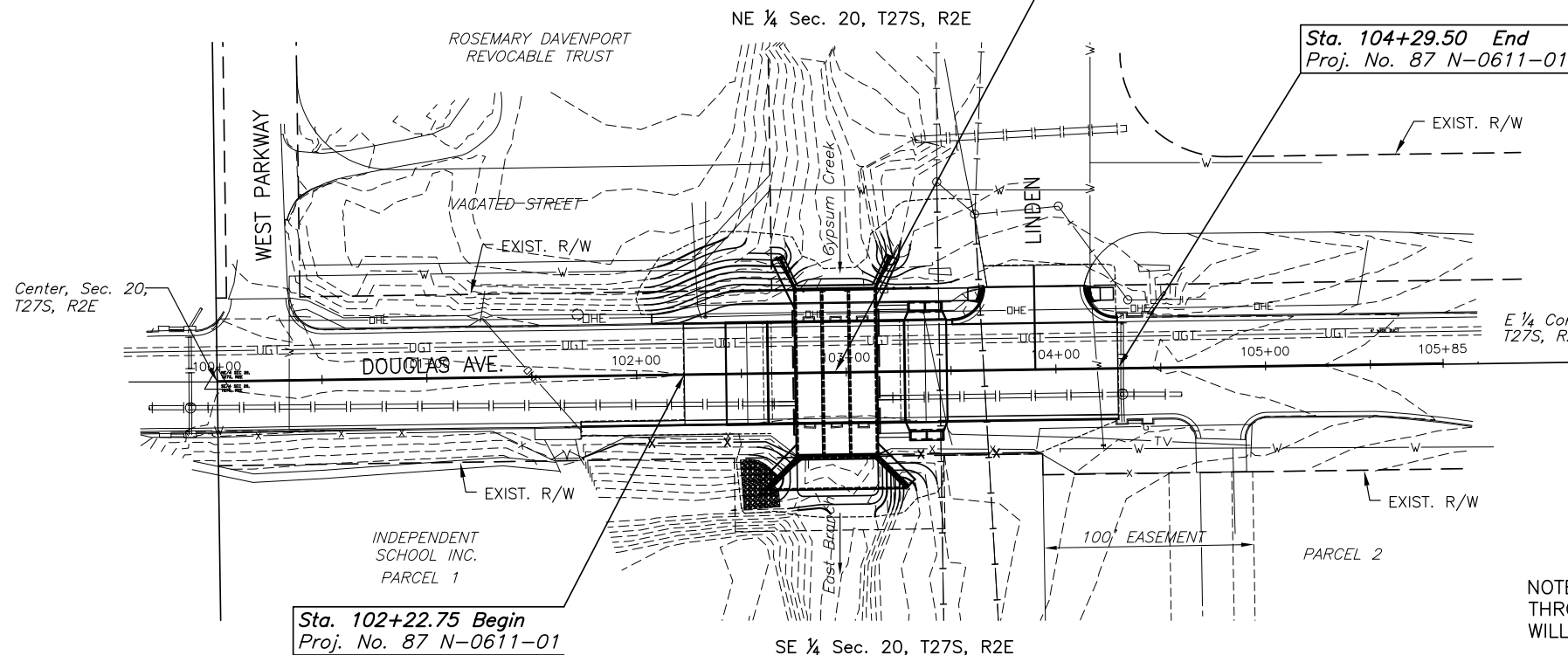
	Communication Lines
	Electric Lines
	Gas Lines
	Storm and Sanitary Sewers (Existing)
	Water Lines (Existing)

APPROVED - DATE

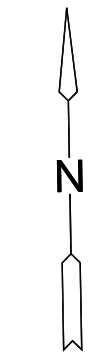
GARY JANZEN, P.E.
CITY ENGINEER

STATE OF KANSAS
DEPARTMENT OF TRANSPORTATION
PLAN AND PROFILE OF PROPOSED
DOUGLAS AVENUE BRIDGE AT LINDEN

FEDERAL AID PROJECT
CITY OF WICHITA PROJECT NO. 472-85119
SEDGWICK COUNTY
CITY OF WICHITA



LOCATION MAP



NOTE: TWO WAY TRAFFIC TO BE CARRIED THROUGH CONSTRUCTION. LOCAL TRAFFIC WILL BE PERMITTED TO ADJACENT PROPERTIES.

NOTE: THE PIPES ON THIS PROJECT ARE IN ACCORDANCE WITH THE CURRENT KDOT PIPE POLICY.

STATE	PROJECT NO.	YEAR	SHEET NO.	TOTAL SHEETS
KANSAS	87 N-0611-01	2015	1	51

F.A. NO. STP-N061(101)
KDOT PROJ. NO. 87 N-0611-01

- GRADING
- SURFACING
- CONCRETE PAVEMENT
- STORM SEWER
- BRIDGE
- PAVEMENT MARKING
- FENCING
- SEEDING



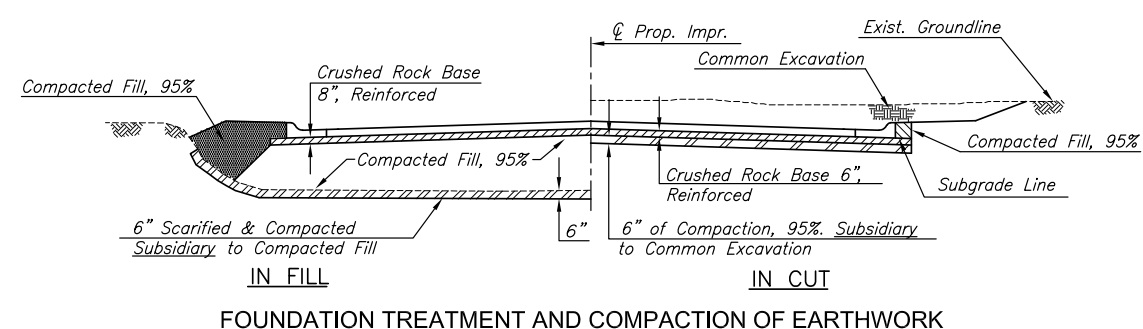
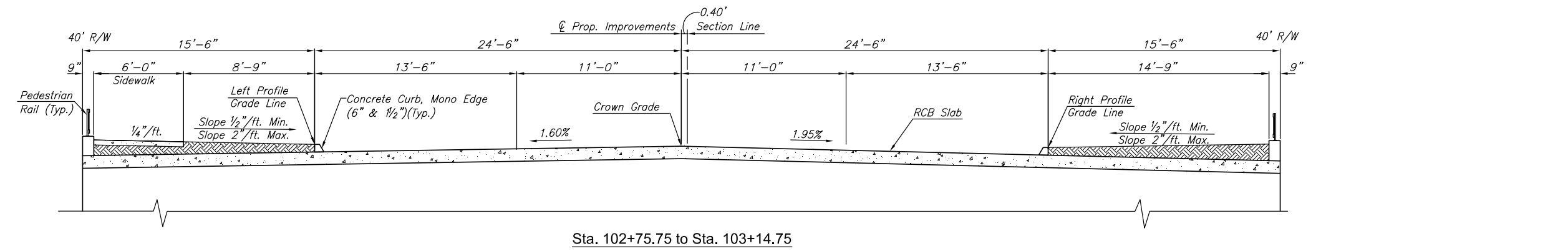
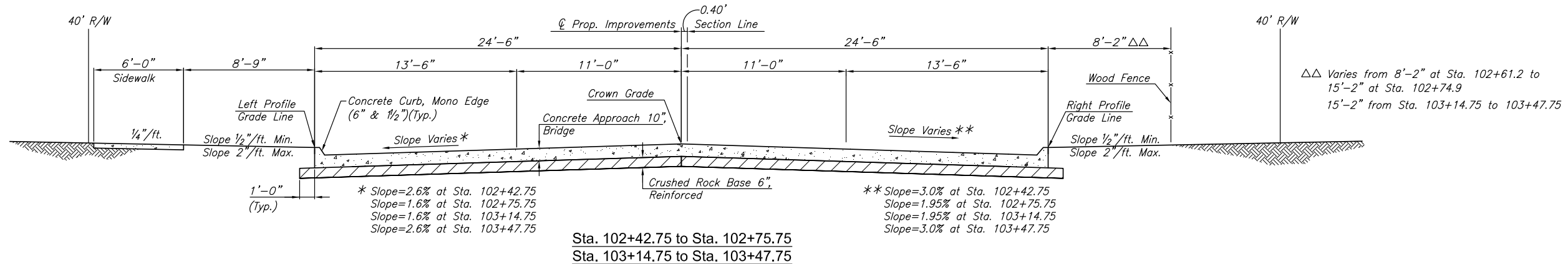
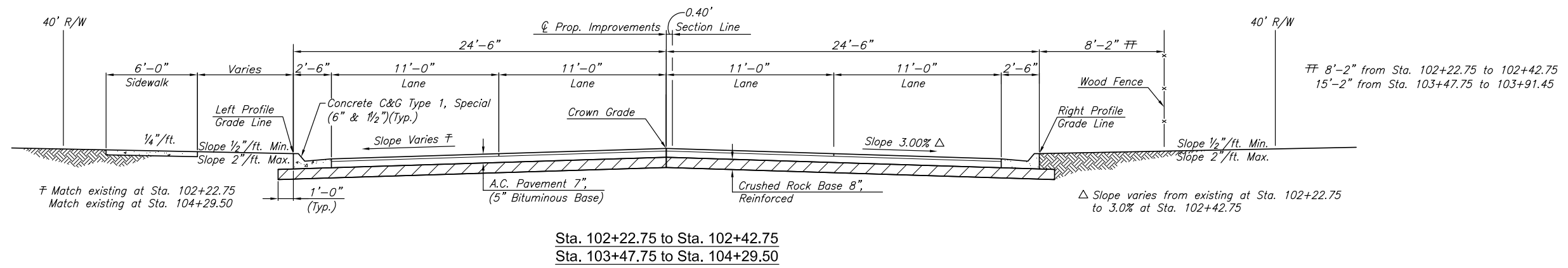
CONSTRUCTION PLANS FOR
DOUGLAS AVENUE BRIDGE AT LINDEN
WICHITA, KANSAS

©2013 MKEC Engineering
All Rights Reserved
www.mkec.com
These drawings and their contents, including, but not limited to, all concepts, designs, & ideas are the exclusive property of MKEC Engineering (MKEC), and may not be used or reproduced in any way without the express consent of MKEC.

TITLE SHEET	
PROJECT NO.	472-85119
DATE	FEB. 2014
SCALE	1"=40'
DESIGNED	DRAWN
JRA	JSB
CHECKED	JRA
NO.	REVISION
	DATE
SHEET NO.	
1 OF 51	

J:\PROJECTS\2013\130104064\DOUGLAS BRIDGE AT LINDEN\CIVIL\CAD\UTL\1304064.DWG

STATE	PROJECT NO.	YEAR	SHEET NO.	TOTAL SHEETS
KANSAS	87 N-0611-01	2015	3	51



CONSTRUCTION PLANS FOR
DOUGLAS AVENUE BRIDGE AT LINDEN
 WICHITA, KANSAS

©2013 MKEC Engineering
 All Rights Reserved
 www.mkec.com
 These drawings and their contents, including, but not limited to, all concepts, designs, & ideas are the exclusive property of MKEC Engineering (MKEC), and may not be used or reproduced in any way without the express consent of MKEC.

PROJECT TYPICAL SECTIONS

PROJECT NO.	472-85119	
DATE	FEB. 2014	
SCALE	N/A	
DESIGNED	DRAWN	CHECKED
JRA	JSB	JRA
NO.	REVISION	DATE

PLOTTED: Wednesday, September 10, 2014 @ 10:54AM
 Z:\Projects\2013\85119\85119_0611\85119_0611.dwg
 User: jrb
 Plot Device: HPGL2

PLOTTED: Wednesday, September 10, 2014 @ 10:52PM

J:\PROJECTS\2013\10104064\DOUGLAS BRIDGE AT LINDEN\CIVIL\CAD\UTIL\13548EPR1.DWG

- Control Point #13**
1. Set $\frac{5}{8}$ " rebar with red "MKEC Control Point" cap in sidewalk
 2. Sta. 100+55.45, 28.02' Lt.
N 1686410.929, E 1678534.085
 3. SE side firehydrant 9.0' NW
 4. Centerline of Douglas St. 28.0' S
 5. Bend in south side of sidewalk 6.5' SE

- Control Point #11**
1. Set $\frac{5}{8}$ " rebar with red "MKEC Control Point" cap in asphalt
 2. Sta. 103+69.13, 40.38' Lt.
N 1686427.836, E 1678847.555
 3. SE corner of stone sign 18.0' NW
 4. Concrete/Asphalt edge line 1.3' S
 5. NE end of sidewalk ramp 2.81' SW

- Control Point #10**
1. Set $\frac{5}{8}$ " rebar with red "MKEC Control Point" cap in asphalt
 2. Sta. 103+84.67, 135.12' Lt.
N 1686522.793, E 1678861.725
 3. Lightpole at south end of island Linden Dr. 19.0' N
 4. West edge asphalt Linden Drive 34.0' W
 5. East edge asphalt Linden Drive 33.0' E

STATE	PROJECT NO.	YEAR	SHEET NO.	TOTAL SHEETS
KANSAS	87 N-0611-01	2015	4	51



CONSTRUCTION PLANS FOR
DOUGLAS AVENUE BRIDGE AT LINDEN
WICHITA, KANSAS

NE $\frac{1}{4}$ Sec. 20, T27S, R2E

NE $\frac{1}{4}$ Sec. 20, T27S, R2E

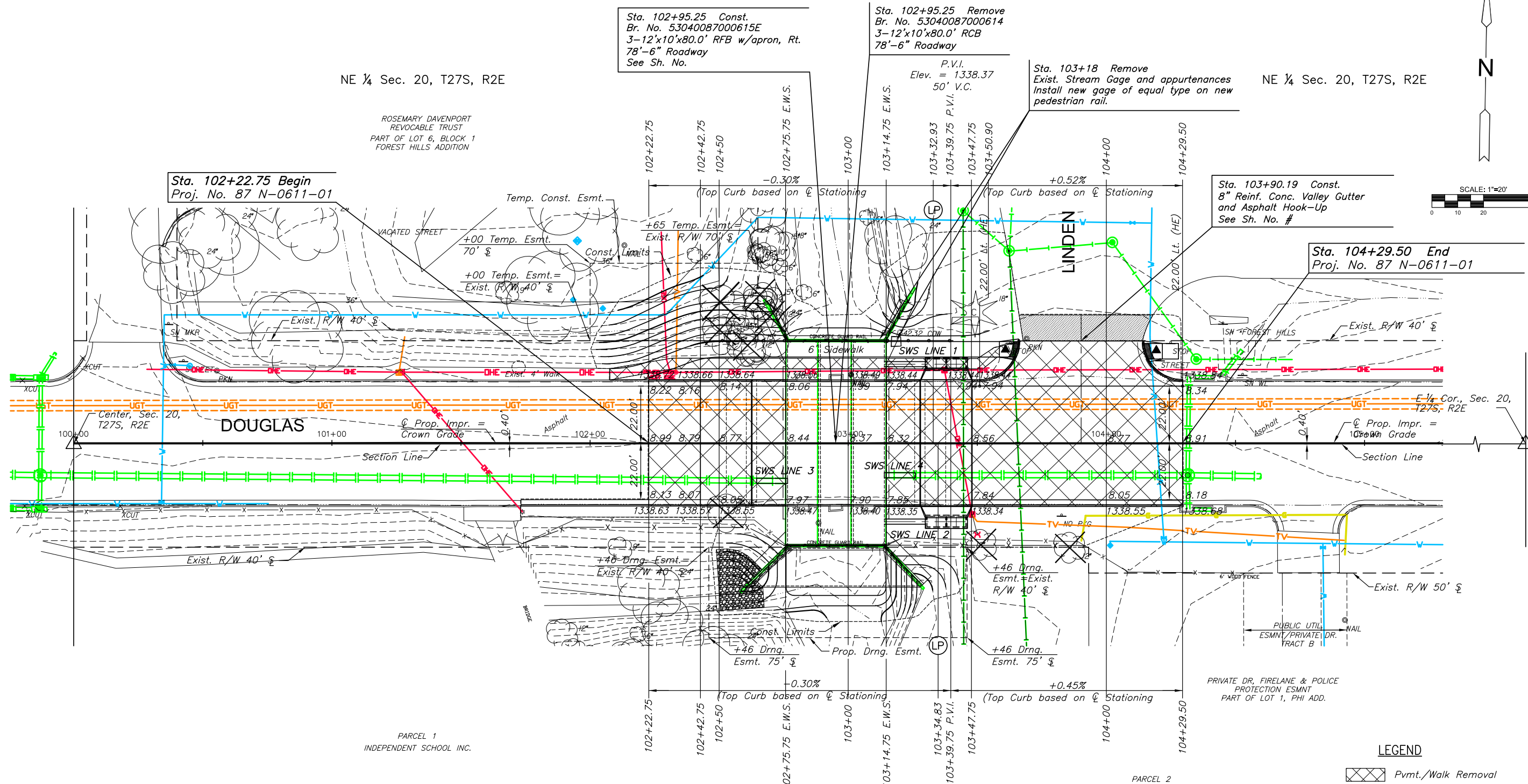
Sta. 102+95.25 Const.
Br. No. 53040087000615E
3-12'x10'x80.0' RFB w/apron, Rt.
78'-6" Roadway
See Sh. No.

Sta. 102+95.25 Remove
Br. No. 53040087000614
3-12'x10'x80.0' RCB
78'-6" Roadway

Sta. 103+18 Remove
Exist. Stream Gage and appurtenances
Install new gage of equal type on new
pedestrian rail.

Sta. 103+90.19 Const.
8" Reinf. Conc. Valley Gutter
and Asphalt Hook-Up
See Sh. No. #

Sta. 104+29.50 End
Proj. No. 87 N-0611-01



SE $\frac{1}{4}$ Sec. 20, T27S, R2E

P.V.I.
Elev. = 1338.28
50' V.C.

PARCEL 2
DEDICATION & EASEMENT
PART OF LOT 1, PHI ADD.

PARCEL 1
INDEPENDENT SCHOOL INC.

LEGEND

	Pvmt./Walk Removal
	Asphalt Hookup
	Construct Wheelchair Ramp
	Tree Removal

BM#1 City of Wichita benchmark disc in top of concrete bridge rail at northeast corner of project RCB
Sta. 103+14.62', 39.70' Lt. Elev. 1342.32

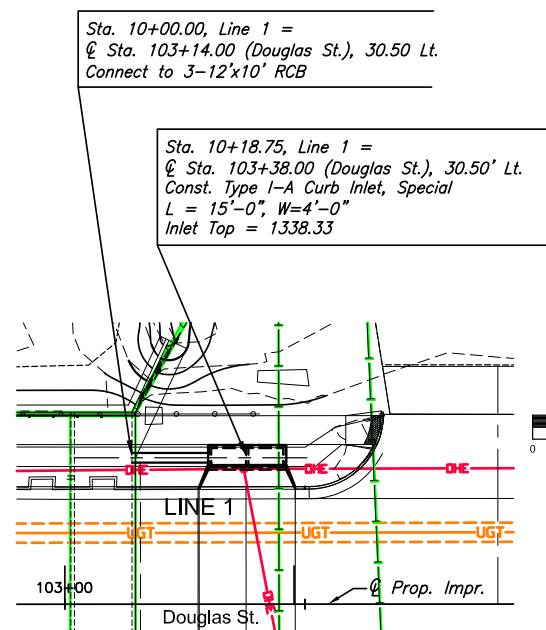
REMOVAL OF EXISTING STRUCTURE: The Contractor shall remove the existing concrete RCB and wings. All materials shall become the property of the Contractor and shall be removed from the project site by the Contractor.

©2013 MKEC Engineering All Rights Reserved
These drawings and their contents, including, but not limited to, all concepts, designs, & ideas are the exclusive property of MKEC Engineering (MKEC), and may not be used or reproduced in any way without the express consent of MKEC.

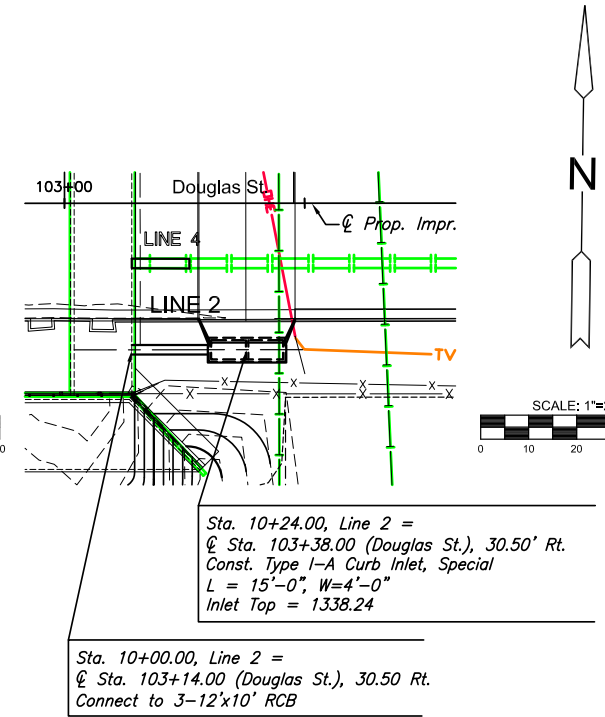
PAVING PLAN SHEET

PROJECT NO.	472-85119	
DATE	FEB. 2014	
SCALE	1"=40'	
DESIGNED	DRAWN	CHECKED
JRA	JSB	JRA
NO.	REVISION	DATE
SHEET NO.	4 OF 51	

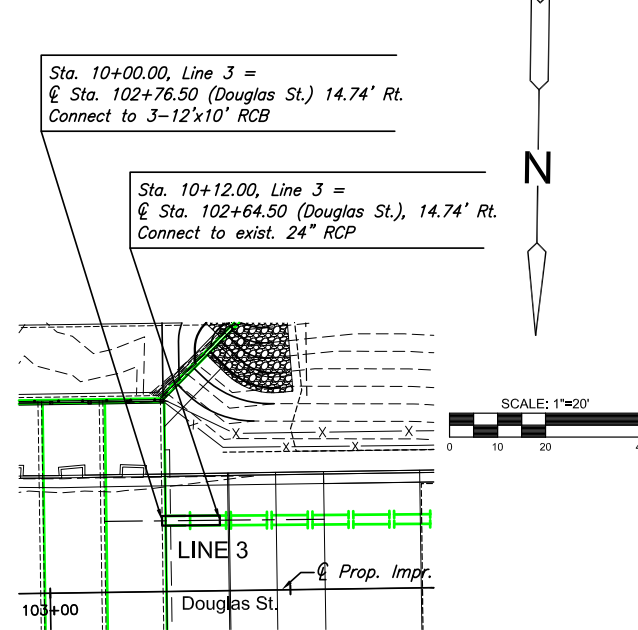
STATE	PROJECT NO.	YEAR	SHEET NO.	TOTAL SHEETS
KANSAS	87 N-0611-01	2015	12	51



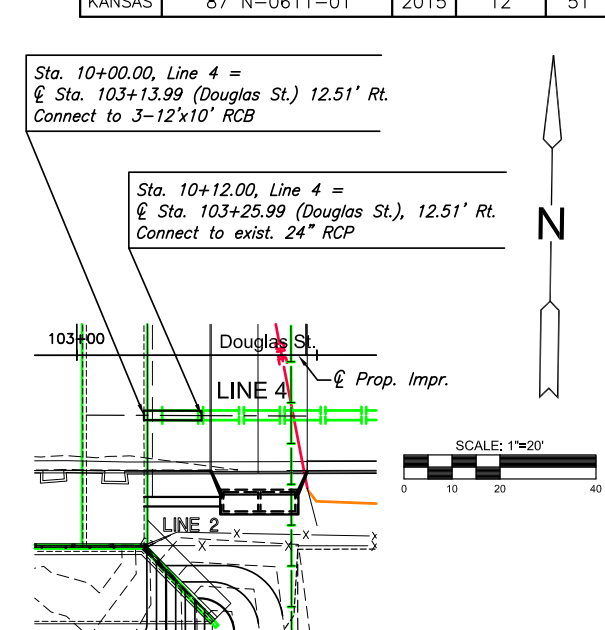
PLAN SWS LINE 1



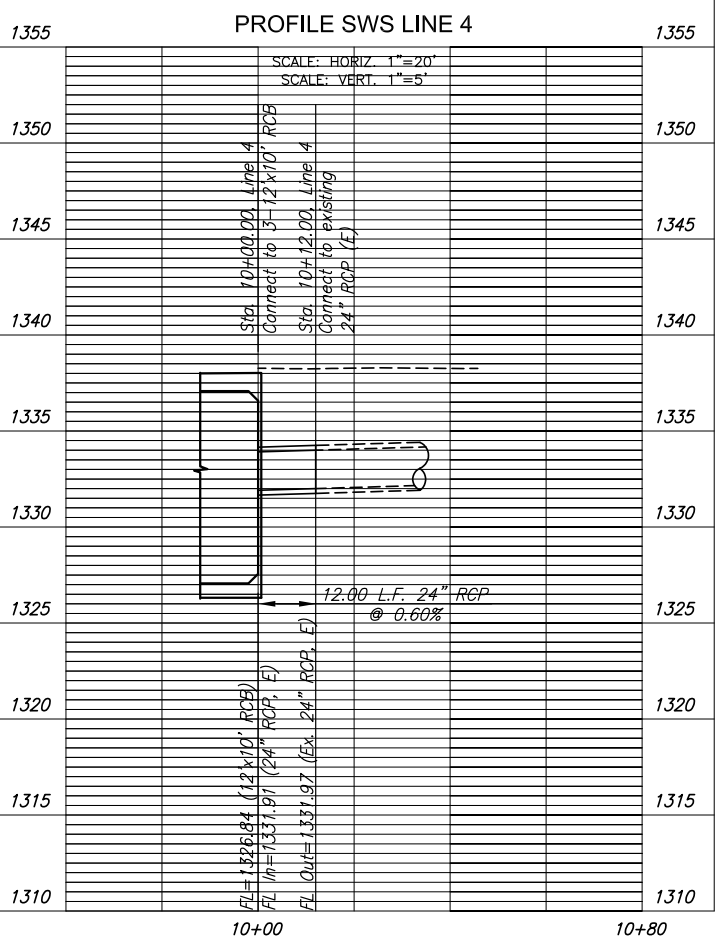
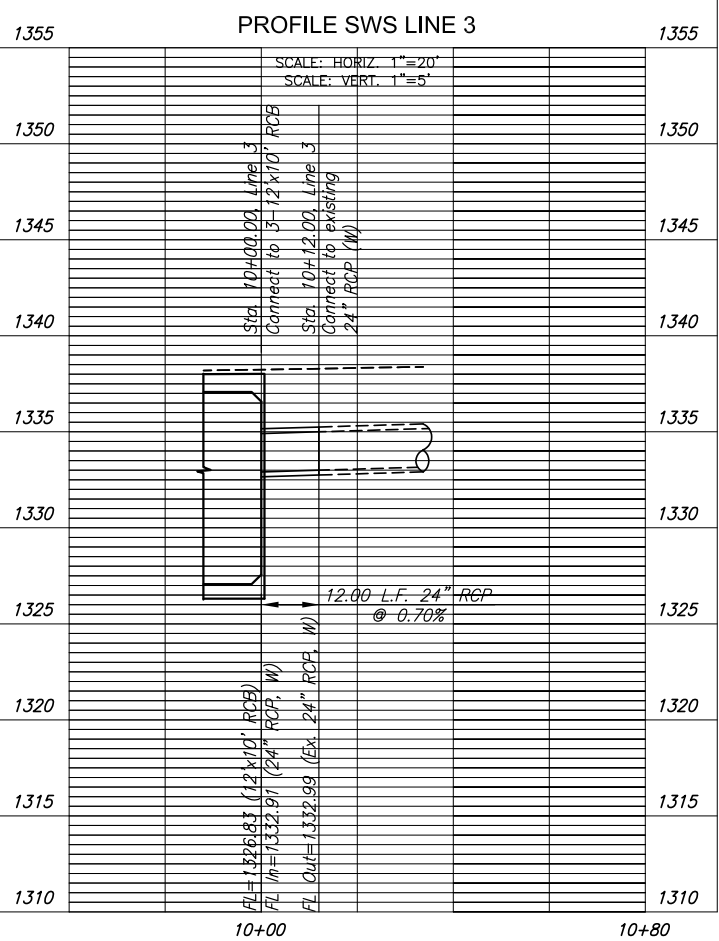
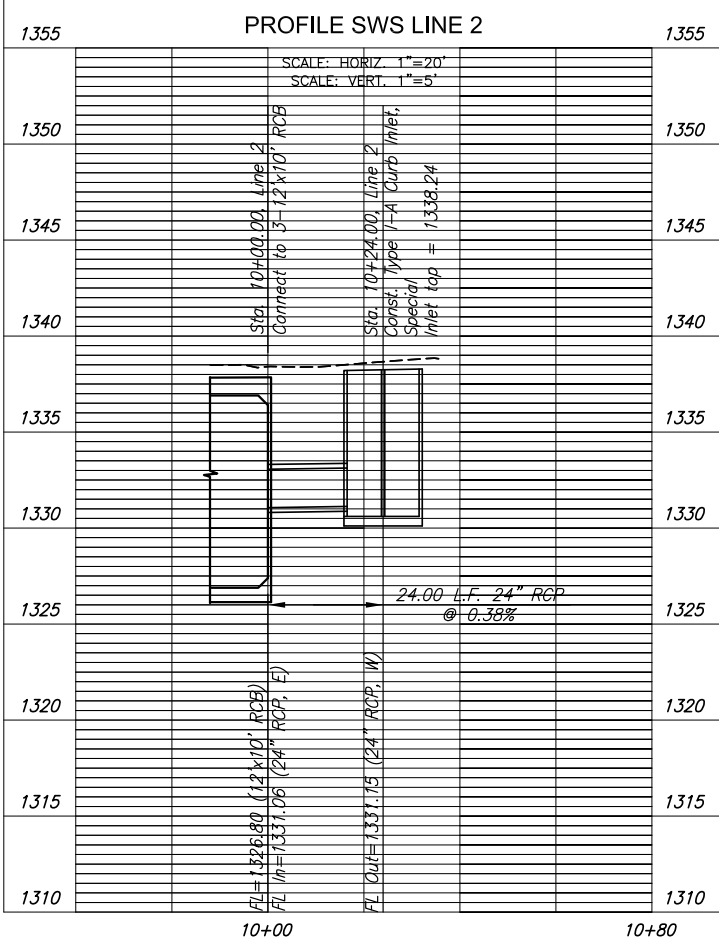
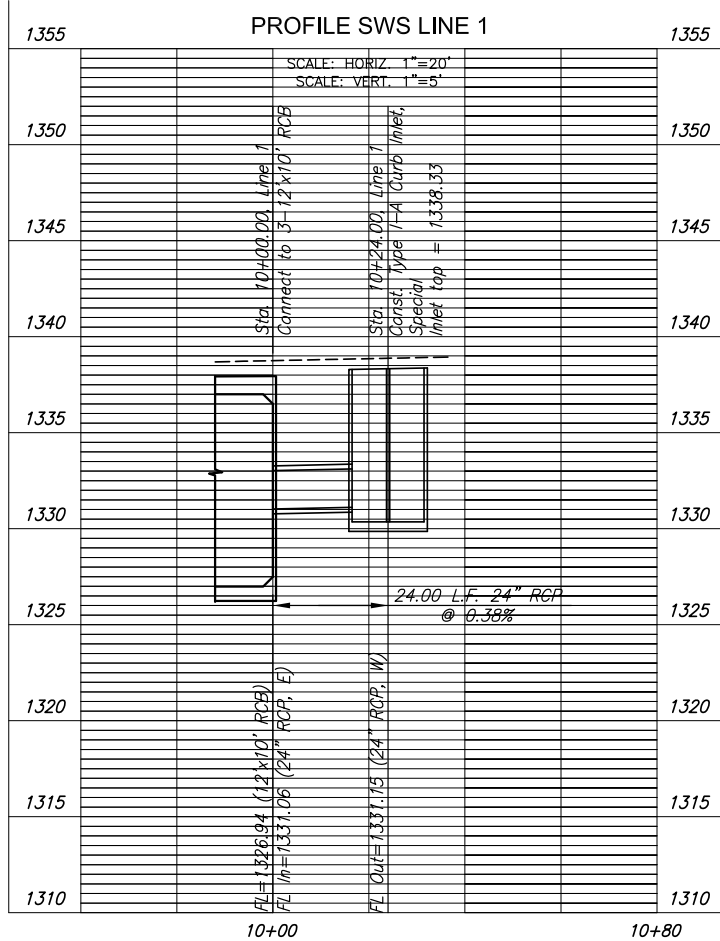
PLAN SWS LINE 2



PLAN SWS LINE 3



PLAN SWS LINE 4



CONSTRUCTION PLANS FOR
DOUGLAS AVENUE BRIDGE AT LINDEN
 WICHITA, KANSAS

©2013 MKEC Engineering
 All Rights Reserved
 www.mkec.com
 These drawings and their contents, including, but not limited to, all concepts, designs, & ideas are the exclusive property of MKEC Engineering (MKEC), and may not be used or reproduced in any way without the express consent of MKEC.

STORM WATER SEWER PLAN AND PROFILE

PROJECT NO.	472-85119	
DATE	FEB. 2014	
SCALE	#=#	
DESIGNED	JRA	
DRAWN	JSB	
CHECKED	JRA	
NO.	REVISION	DATE

J:\PROJECTS\2013\130104064\DOUGLAS BRIDGE AT LINDEN\CIVIL\CAD\UTIL\130485119.DWG

- Control Point #13**
1. Set 5/8" rebar with red "MKEC Control Point" cap in sidewalk
 2. Sta. 100+55.45, 28.02' Lt.
N 1686410.929, E 1678534.085
 3. SE side firehydrant 9.0' NW
 4. Centerline of Douglas St. 28.0' S
 5. Bend in south side of sidewalk 6.5' SE

- Control Point #11**
1. Set 5/8" rebar with red "MKEC Control Point" cap in asphalt
 2. Sta. 103+69.13, 40.38' Lt.
N 1686427.836, E 1678847.555
 3. SE corner of stone sign 18.0' NW
 4. Concrete/Asphalt edge line 1.3' S
 5. NE end of sidewalk ramp 2.81' SW

Sta. 102+95.25 Const.
Br. No. 53040087000615E
3-12"x10"x80.0' RCB w/apron, Rt.
78'-6" Roadway

- Control Point #10**
1. Set 5/8" rebar with red "MKEC Control Point" cap in asphalt
 2. Sta. 103+84.67, 135.12' Lt.
N 1686522.793, E 1678861.725
 3. Lightpole at south end of island Linden Dr. 19.0' N
 4. West edge asphalt Linden Drive 34.0' W
 5. East edge asphalt Linden Drive 33.0' E

STATE	PROJECT NO.	YEAR	SHEET NO.	TOTAL SHEETS
KANSAS	87 N-0611-01	2015	18	51



DRAINAGE DATA

Drainage Area	2.7 Sq. Mi.
Design Frequency	100 Years
Design Discharge	2590 cfs
Design High Water Elevation	1337.26
Overtopping Elevation	N/A
Overtopping Discharge	N/A
Overtopping Frequency	N/A
Historic High Water Elevation	Unknown
Estimated Ordinary High Water Discharge	350.0 cfs

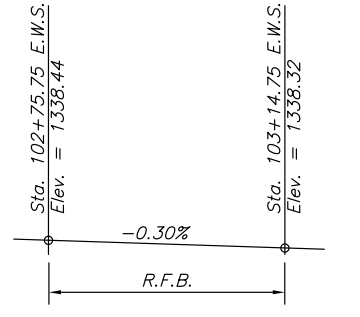
REMOVAL OF EXISTING STRUCTURE: The Contractor shall remove the existing concrete RCB and wings. All materials shall become the property of the Contractor and shall be removed from the project site by the Contractor.

DESIGN SPECIFICATIONS:
AASHTO Specifications, 2007 Edition and 2009 Interim Specifications, Load and Resistance Factor Design

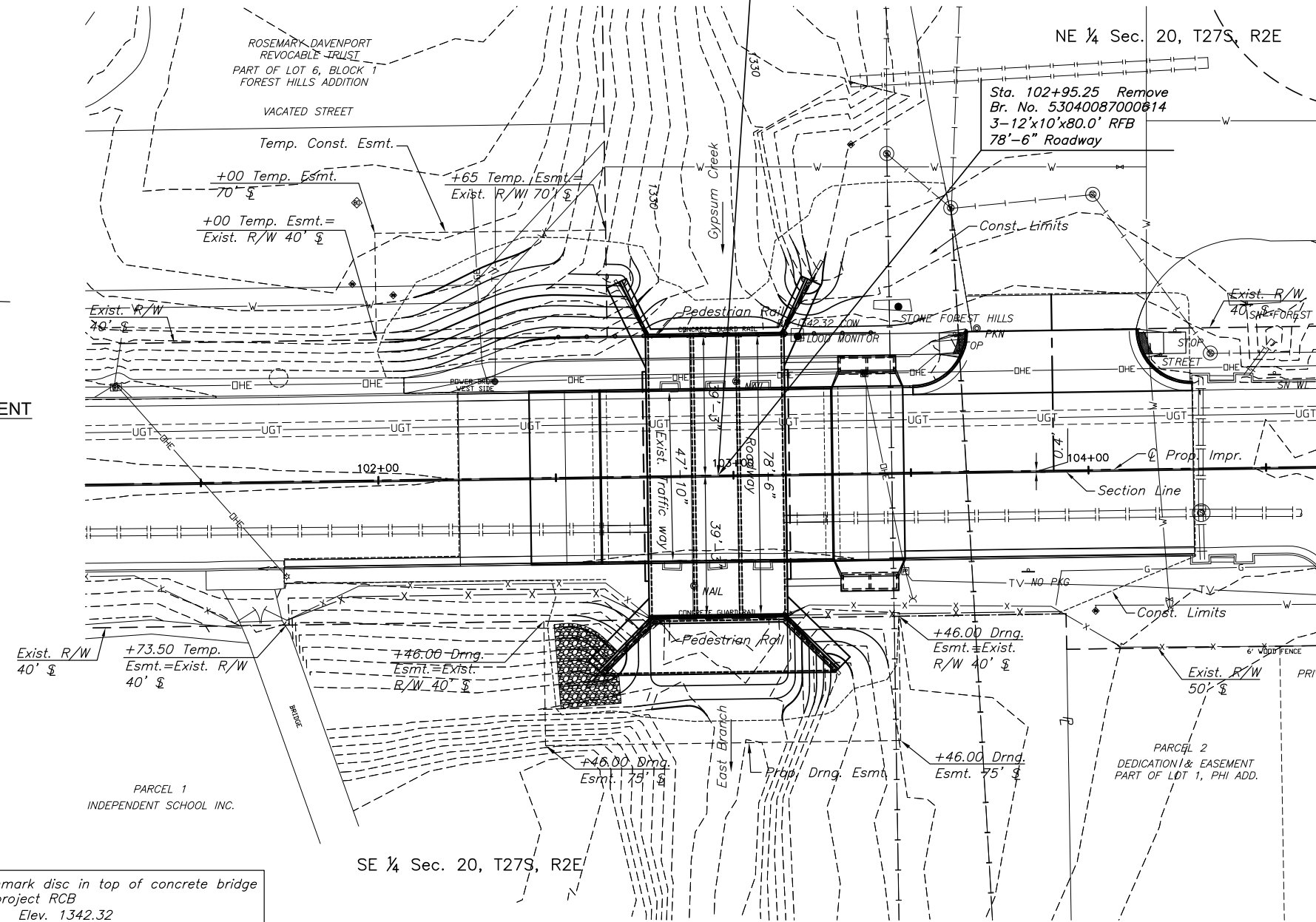
LOADING: HL93

UNIT STRESSES: Grade 4.0 Concrete: $f'c = 4,000$ p.s.i.
Reinforcing Steel: $f_y = 60,000$ p.s.i.

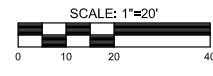
- NOTES:**
1. Cast-In-Place RFB only. Precast not allowed.
 2. Use epoxy coated reinforcing and steel and AE concrete in top slab.
 3. Refer to KDOT Std. BR025A for Embedded Structure.
 4. Structure will require special hubguard with standard wingwalls.
 5. City of Wichita Std. Pedestrian Rail required on hubguards.
 6. Temporary Shoring Plans
 7. Demolition Plans



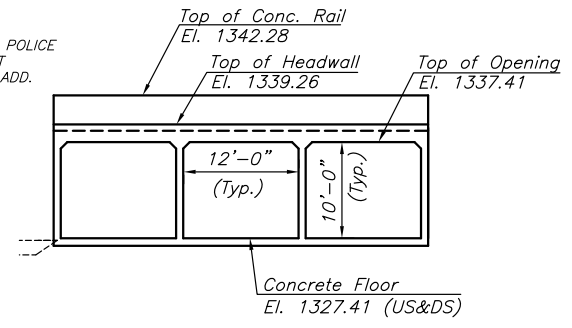
PROFILE GRADE & PROPOSED IMPROVEMENT



PLAN

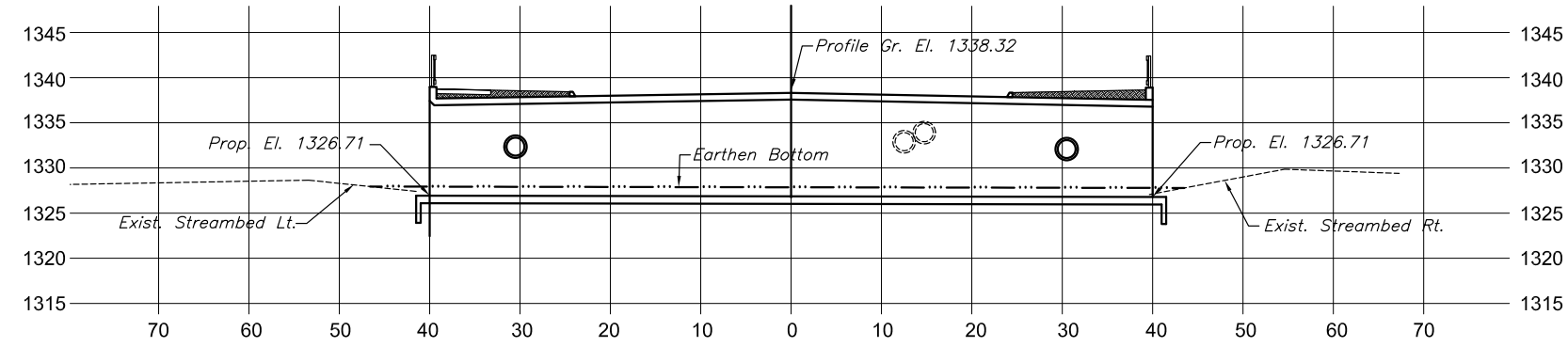


BM#1 City of Wichita benchmark disc in top of concrete bridge rail at northeast corner of project RCB
Sta. 103+14.62; 39.70' Lt. Elev. 1342.32

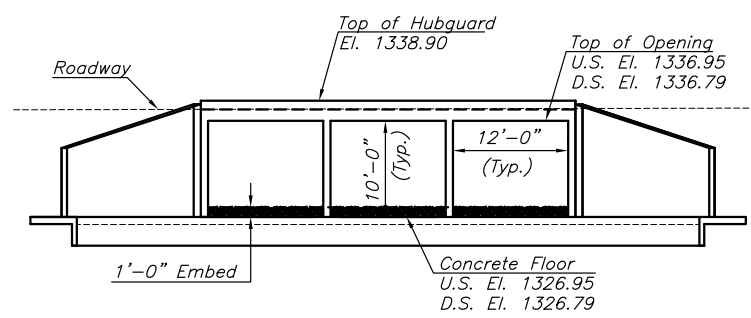


EXISTING RFB WATERWAY OPENING

Waterway opening at Bridge
At ∇ Sta. 102+95.25
Area = 358.7 Sq. Ft.



PROPOSED CHANNEL PROFILE



PROPOSED RCB WATERWAY OPENING

Waterway opening at Bridge
At ∇ Sta. 102+95.25
Area = 360.0 Sq. Ft.

CONSTRUCTION PLANS FOR

DOUGLAS AVENUE BRIDGE AT LINDEN

WICHITA, KANSAS

©2013 MKEC Engineering
All Rights Reserved
www.mkec.com
These drawings and their contents, including, but not limited to, all concepts, designs, & ideas are the exclusive property of MKEC Engineering (MKEC), and may not be used or reproduced in any way without the express consent of MKEC.

BRIDGE CONTOUR MAP

PROJECT NO.	472-85119
DATE	FEB. 2014
SCALE	1"=40'
DESIGNED	JRA
DRAWN	JSB
CHECKED	JRA

NO.	REVISION	DATE

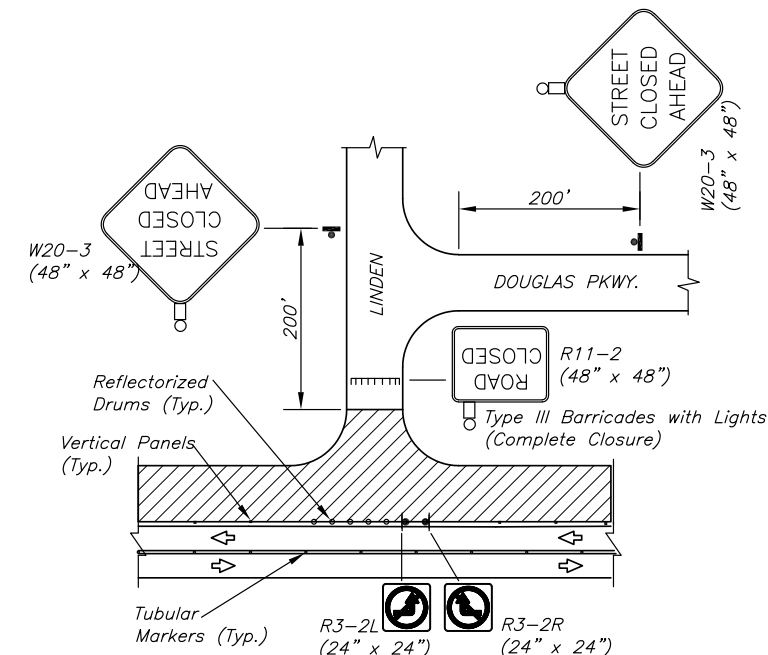
SHEET NO.

J:\PROJECTS\2013\1040464\DOUGLAS BRIDGE AT LINDEN\CIVIL\DWG\11345450.DWG

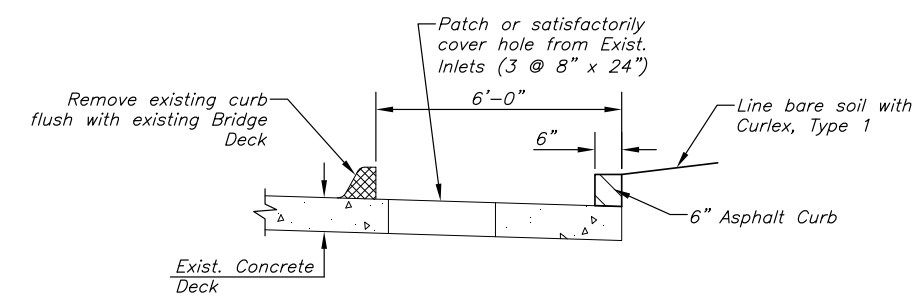
STATE	PROJECT NO.	YEAR	SHEET NO.	TOTAL SHEETS
KANSAS	87 N-0611-01	2015	38	51



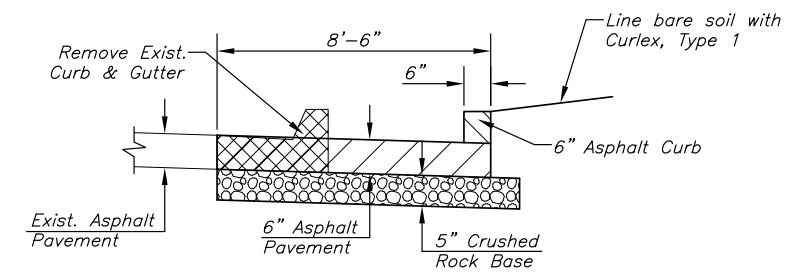
PHASING	HANDLING OF TRAFFIC	MAJOR CONSTRUCTION ITEMS	REMARKS
1	Erect traffic control closing the outside east-bound lane and to allow a single lane of east-bound traffic in the inside east-bound lane. Maintain two lane traffic west-bound throughout this construction phase.	Construct the temporary pavement widening and associated improvements necessary to accommodate traffic during Phase 2 of the project.	Remove fence west of bridge as necessary to accommodate temporary pavement widening and grading. Place removed portion of fence on Owner's property as directed. Cost is Subsidiary to "Removal of Existing Structures". Traffic control plans and details are provided in these plans.
2	Erect traffic control to allow a single lane of traffic in each direction in the south half of the project in accordance with the plans. Traffic shall utilize temporary pavement widening during this construction phase. Erect traffic control to close the Linden and Douglas intersection.	Construct north half of the bridge to the limits shown in the plans. Construct north half of the street to the limits shown including storm sewer improvements. Construct the valley gutter approach to Linden.	Traffic control plans and details are provided in these plans. Close the sidewalk as shown in these plans at the onset of the construction phase.
3	Erect traffic control to allow a single lane of traffic in each direction to utilize the newly completed construction on the north half of the project. Remove traffic control preventing the use of the Linden and Douglas intersection.	Construct the remaining portions of the bridge. Construct remaining portions of the street improvements including remaining storm sewers.	Traffic control plans and details are provided in these plans.
4	Provide localized traffic control appropriate to the specific construction activity being performed. Single lane closures will be allowed during this phase. Contractor shall utilize traffic control in accordance with the typical traffic control plans included in these plans.	Construct surface courses and install permanent pavement marking which has not yet been installed. Remove temporary markings prior to placing permanent markings. Perform all remaining work yet to be completed which will not require significant traffic control.	Contractor shall install and maintain traffic control as directed by the Engineer based on the specific construction activities implemented during this phase.



LINDEN CLOSURE PLAN



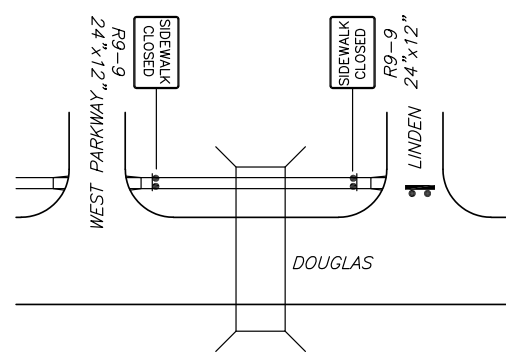
Sta. 102+75.75 to Sta. 103+14.75



Sta. 101+73.26 to Sta. 102+75.75, RT.
Sta. 103+14.75 to Sta. 104+28.39, RT.

Payment for "AC Pavement 6", Temporary will be measured per square yard of material placed. This bid item shall also include all work associated with preparation for placing the asphalt, constructing the rock base, patching the holes in the concrete deck, grading, slope lining and the eventual removal of the temporary pavement. The removal of existing curb on the bridge and cutting a drainage hole through the existing railing will be subsidiary to the bid item "Removal of existing Structures". Payment for the asphalt curb will be paid for as "AC Curb 6", Temporary" and will include costs for its eventual removal.

TEMPORARY ASPHALT WIDENING SECTIONS



SIDEWALK CLOSURE PLAN (PH. 1-3)

TRAFFIC CONTROL GENERAL NOTES

All signs and pavement markings conflicting with construction traffic control shall be covered or removed as directed by the Engineer. Quantities for replacement pavement markings have been estimated and included in pavement marking summary of quantities and will be paid for as part of "Pavement Markings". Sign removal and replacement has not been quantified and will be subsidiary to "Signing, Except Street Name Signs".

As the various construction activities progress, certain situations may arise that will preclude adhering to the original construction sequence or which, in the opinion of the Contractor, would readily adapt themselves to a more efficient phasing operation. Should this occur, the Contractor may submit to the Engineer an alternative plan for approval.

Contractor shall maintain existing drainage system during construction and address local drainage issues as necessary during construction. Temporary drainage measures will be subsidiary to other items in the contract. Contractor shall provide for drainage in sump areas opened to traffic. Ponded stormwater in sump areas will not be allowed.

Maintain access to all properties within the project limits at all times.

All traffic control signs and devices shall be in conformance with the latest edition of the Manual on Uniform Traffic Control Devices.

LEGEND

- Type III Barricades with lights
- Mount On Type III Barricade
- Type B Warning Light
- One Post Sign
- Two Post Sign
- Traffic Flow
- Work Area
- Reflectorized Drum
- Tubular Marker
- Vertical Panel
- Mount Overhead on Signal Cross-arm

PAVING & INCIDENTAL DRAINAGE FOR
DOUGLAS AVENUE BRIDGE
AT LINDEN

©2013 MKEC Engineering All Rights Reserved www.mkec.com
These drawings and their contents, including, but not limited to, all concepts, designs, & ideas are the exclusive property of MKEC Engineering (MKEC), and may not be used or reproduced in any way without the express consent of MKEC.

CONSTRUCTION SEQUENCE SUMMARY

PROJECT NO.	472-85119	
DATE	FEB. 2014	
SCALE	NO SCALE	
DESIGNED	DRAWN	CHECKED
JRA	WJN	JRA
NO.	REVISION	DATE

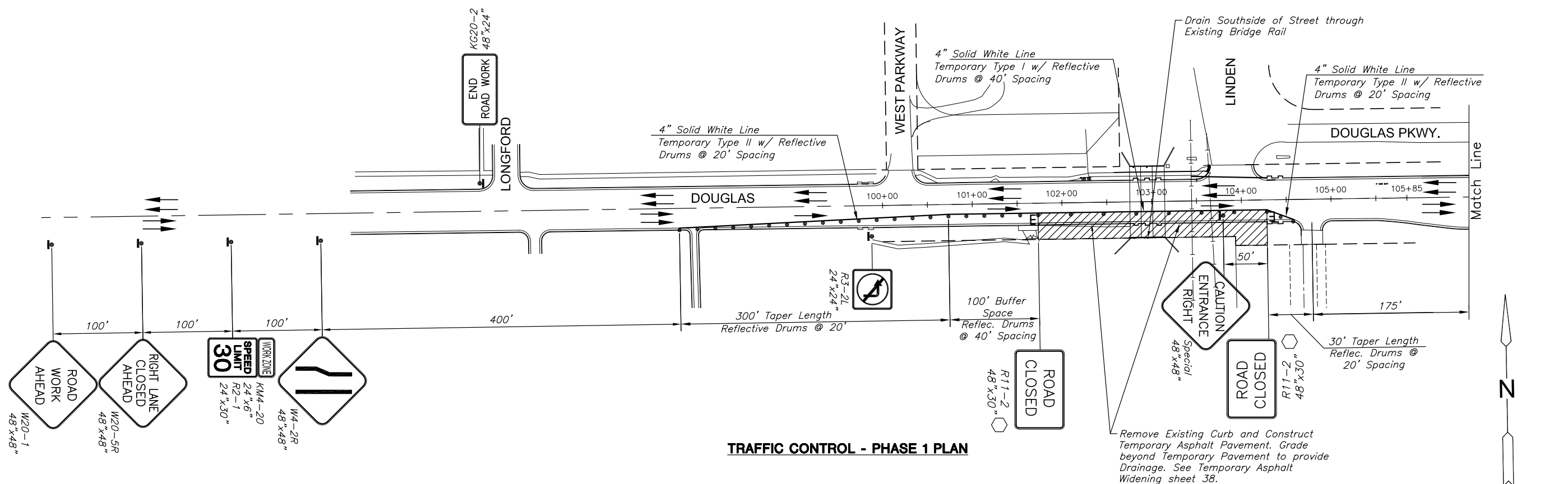
SHEET NO.

I:\PROJECTS\2013\101404545_DOUGLAS BRIDGE AT LINDEN\MS-CIVIL\CAUT\135451001.DWG

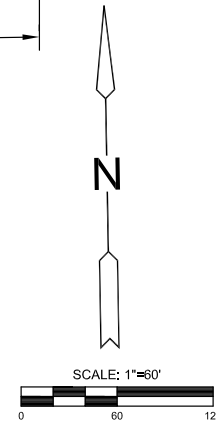
STATE	PROJECT NO.	YEAR	SHEET NO.	TOTAL SHEETS
KANSAS	87 N-0611-01	2015	39	51



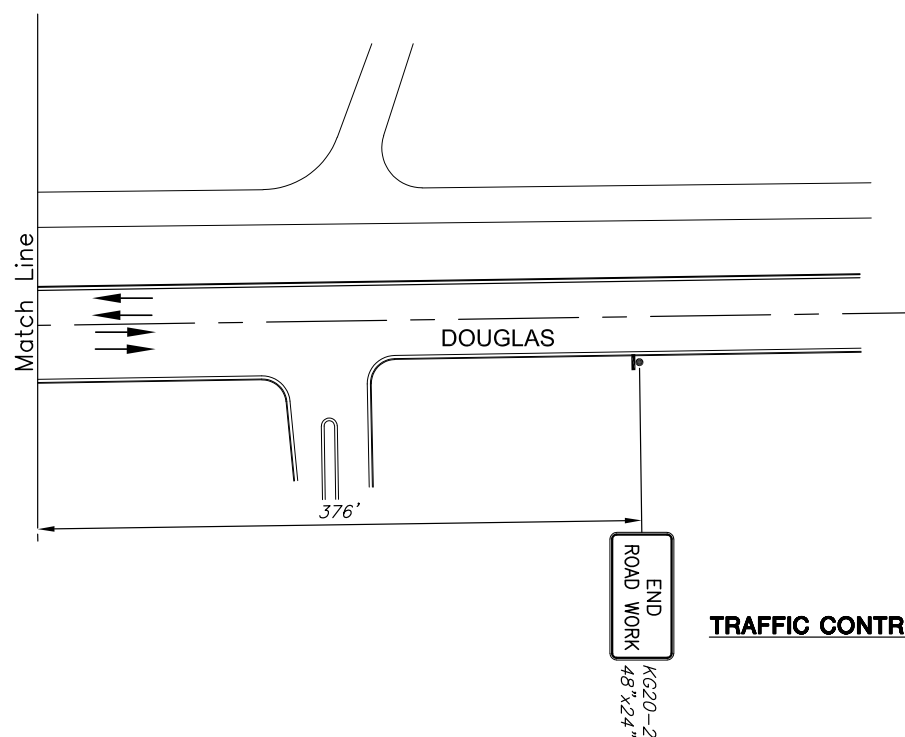
CONSTRUCTION PLANS FOR
DOUGLAS AVENUE BRIDGE AT LINDEN
 WICHITA, KANSAS



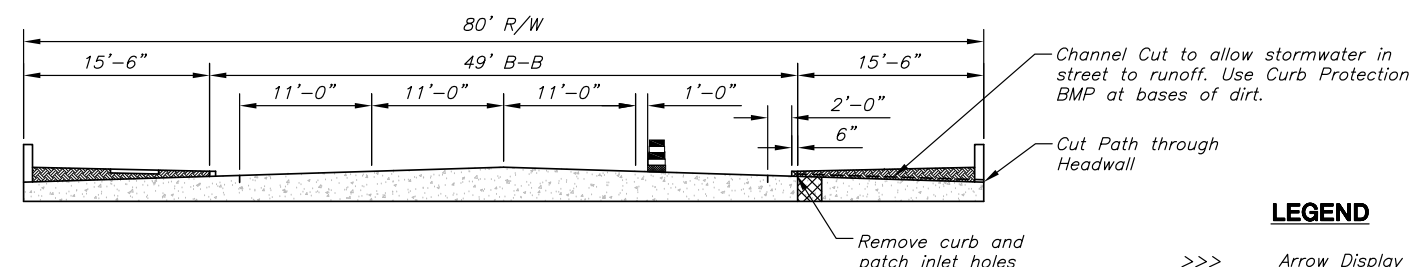
TRAFFIC CONTROL - PHASE 1 PLAN



Remove Existing Curb and Construct Temporary Asphalt Pavement. Grade beyond Temporary Pavement to provide Drainage. See Temporary Asphalt Widening sheet 38.



TRAFFIC CONTROL - PHASE 1 PLAN



TRAFFIC CONTROL - PHASE 1 SECTION

LEGEND

>>>	Arrow Display
	Type III Barricade
○	Mount on Type III Barricade
●	Channelizer
—	Temporary Concrete Safety Barrier
▨	Work Area
←	Traffic Flow
△	Temporary Concrete Safety Barrier pinned to Roadway
■	Temporary Asphalt Pavement

©2013 MKEC Engineering All Rights Reserved www.mkec.com
 These drawings and their contents, including, but not limited to, all concepts, designs, & ideas are the exclusive property of MKEC Engineering (MKEC), and may not be used or reproduced in any way without the express consent of MKEC.

SHEET TITLE 1
SHEET TITLE 2
SHEET TITLE 3

PROJECT NO.	472-85119	
DATE	FEB. 2014	
SCALE	#=#	
DESIGNED	DRAWN	CHECKED
JRA	JSB	JRA

NO.	REVISION	DATE

SHEET NO. 39 OF 51

J:\PROJECTS\2013\104064L_DOUGLAS BRIDGE AT LINDEN\CIVIL\CAD\UTIL\1354501A.DWG

STATE	PROJECT NO.	YEAR	SHEET NO.	TOTAL SHEETS
KANSAS	87 N-0611-01	2015	40	51



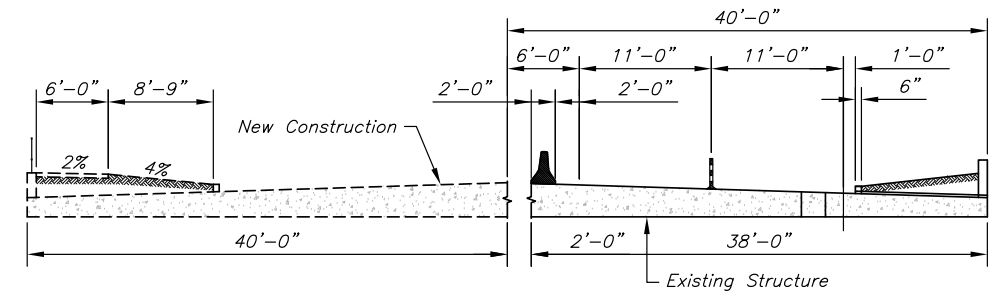
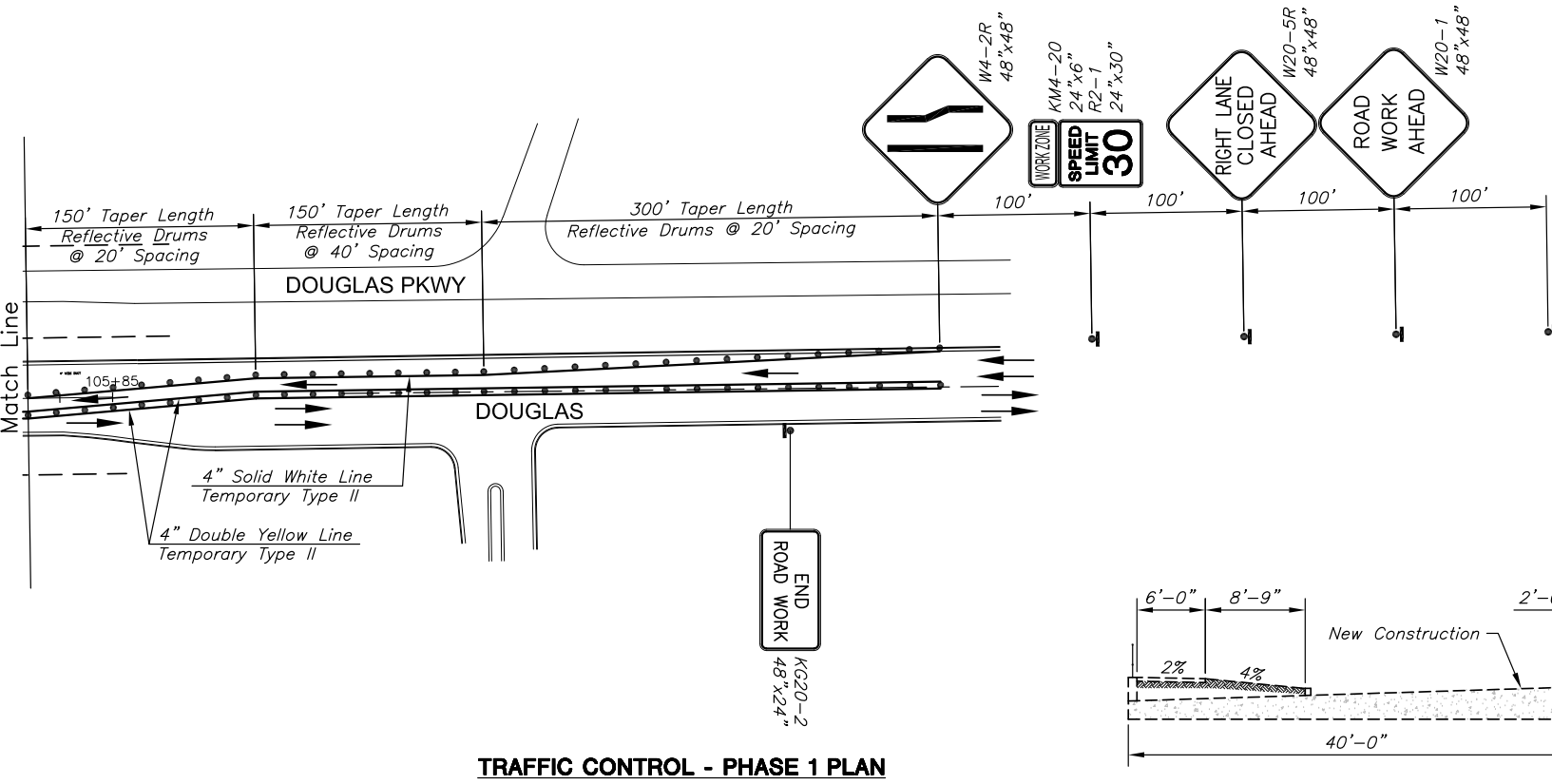
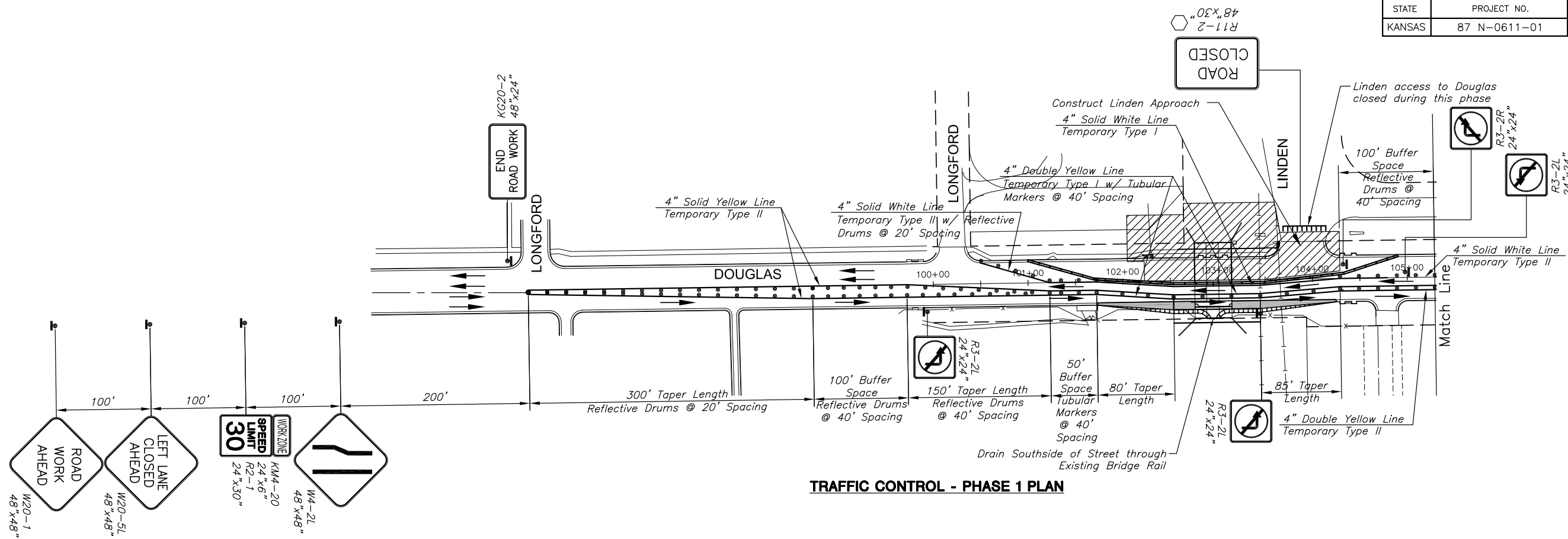
CONSTRUCTION PLANS FOR
DOUGLAS AVENUE BRIDGE AT LINDEN
 WICHITA, KANSAS

©2013 MKEC Engineering All Rights Reserved www.mkec.com
 These drawings and their contents, including, but not limited to, all concepts, designs, & ideas are the exclusive property of MKEC Engineering (MKEC), and may not be used or reproduced in any way without the express consent of MKEC.

TRAFFIC CONTROL PLAN-PHASE 2

PROJECT NO.	472-85119	
DATE	FEB. 2014	
SCALE	1"=60'	
DESIGNED	DRAWN	CHECKED
JRA	JSB	JRA

NO.	REVISION	DATE
SHEET NO.		
40 OF 51		



J:\PROJECTS\2013\104064L DOUGLAS BRIDGE AT LINDEN\CIVIL\CAD\UTL113545101.DWG

STATE	PROJECT NO.	YEAR	SHEET NO.	TOTAL SHEETS
KANSAS	87 N-0611-01	2015	41	51



CONSTRUCTION PLANS FOR
DOUGLAS AVENUE BRIDGE AT LINDEN
 WICHITA, KANSAS

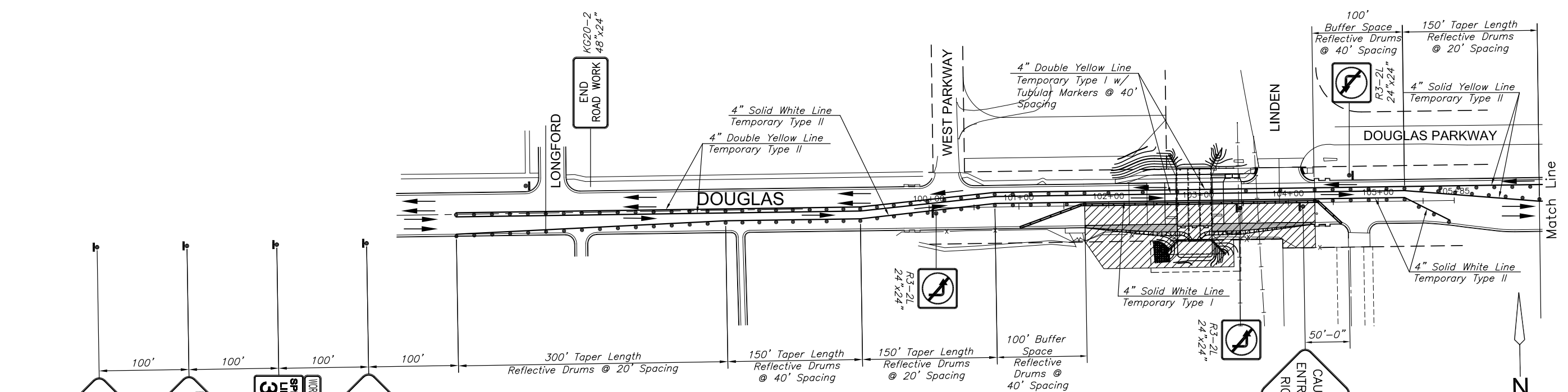
©2013 MKEC Engineering
 All Rights Reserved
 www.mkec.com
 These drawings and their contents, including, but not limited to, all concepts, designs, & ideas are the exclusive property of MKEC Engineering (MKEC), and may not be used or reproduced in any way without the express consent of MKEC.

TRAFFIC CONTROL PLAN-PHASE 3

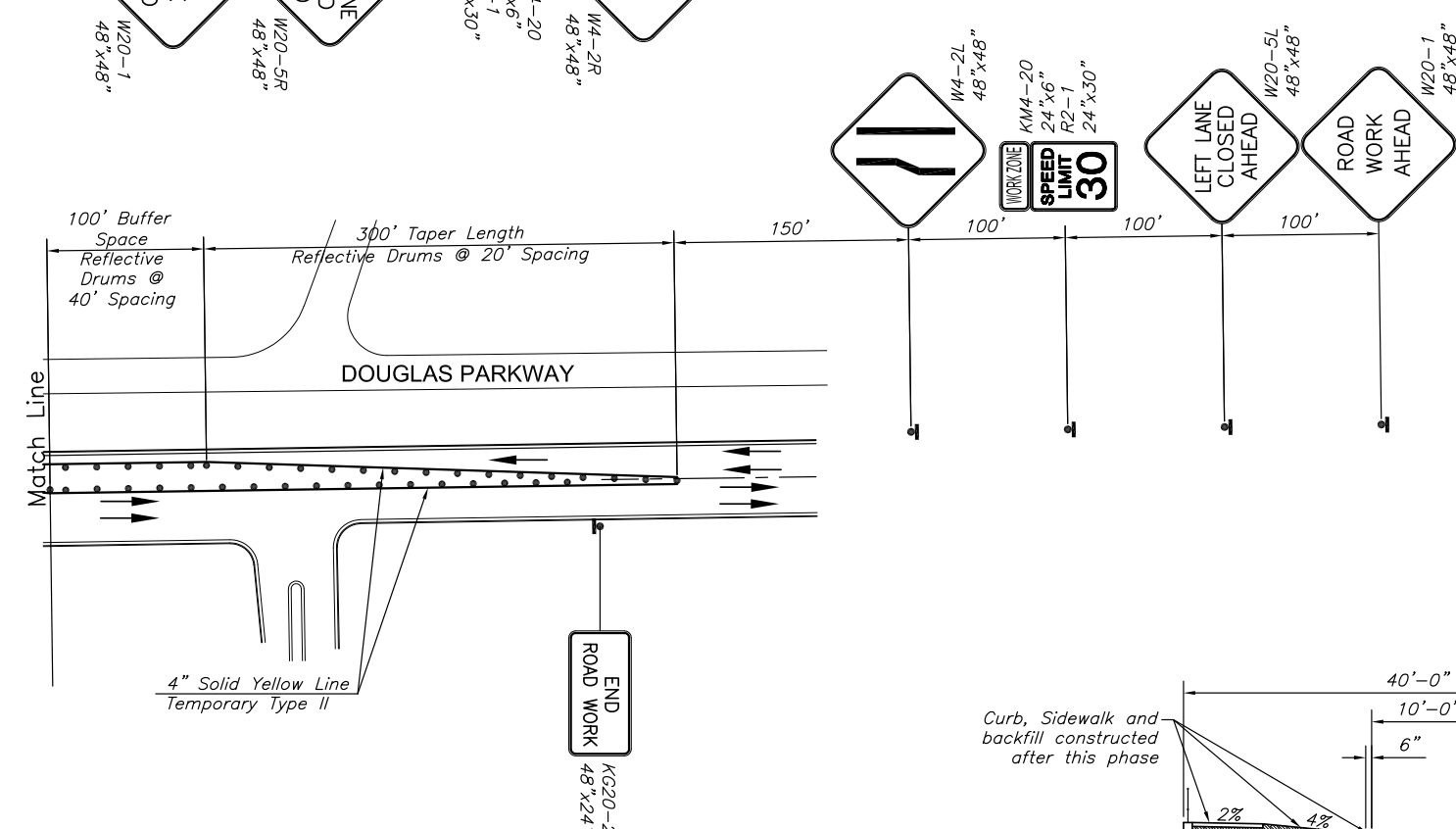
PROJECT NO.	472-85119	
DATE	FEB. 2014	
SCALE	1"=60'	
DESIGNED	DRAWN	CHECKED
JRA	JSB	JRA

NO.	REVISION	DATE

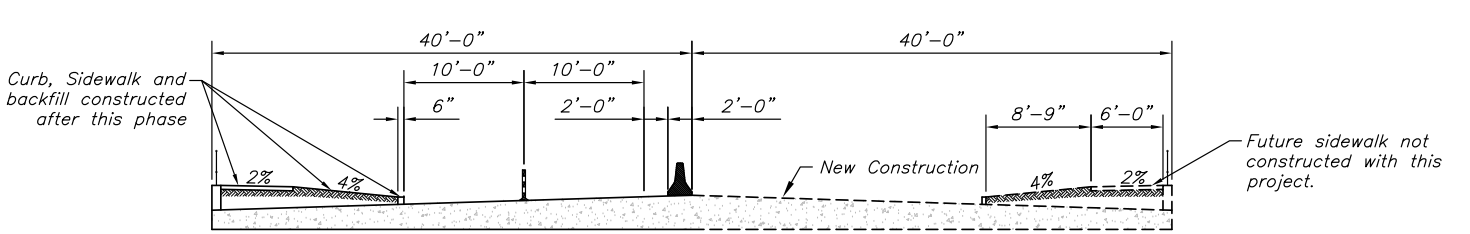
SHEET NO.



TRAFFIC CONTROL - PHASE 2 PLAN



TRAFFIC CONTROL - PHASE 3 SECTION

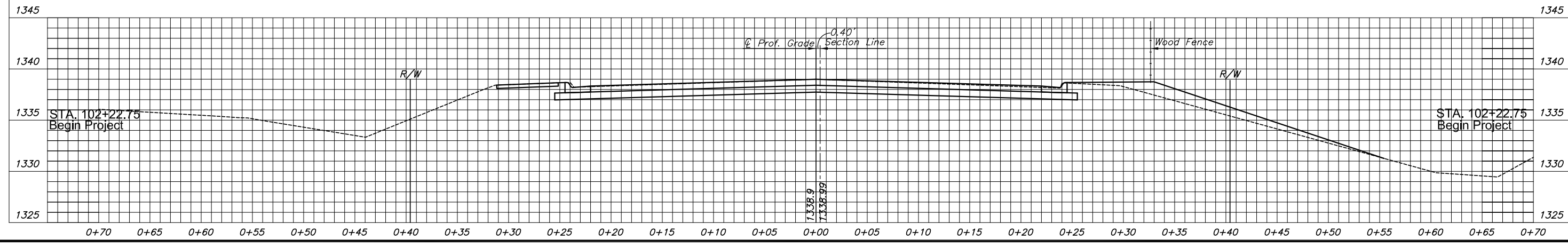
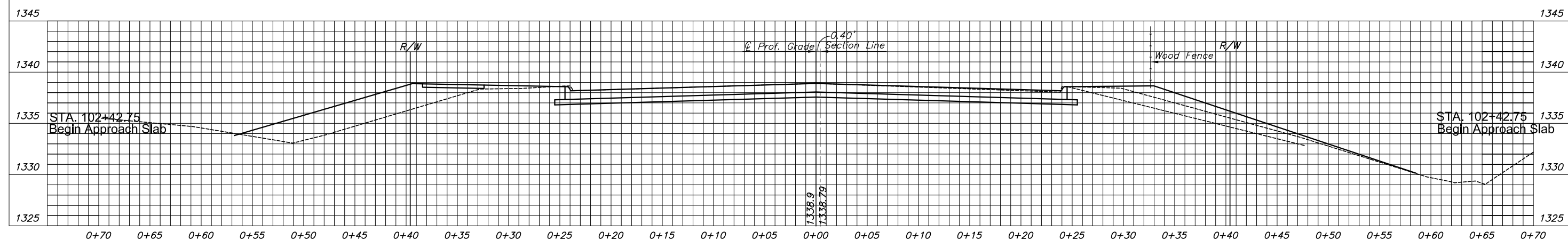
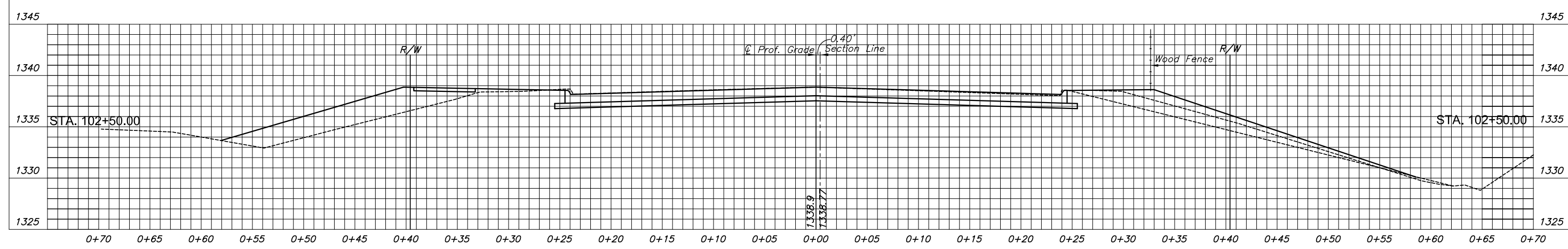
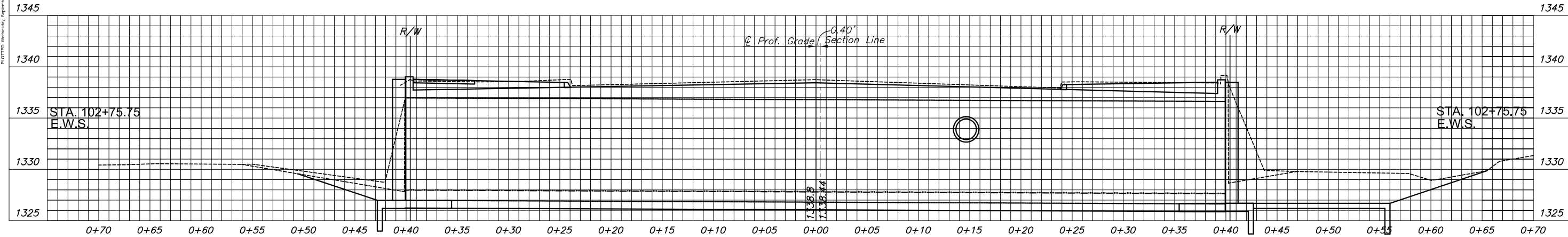


LEGEND

- Type III Barricade
- Channelizer
- Temporary Concrete Safety Barrier
- Work Area
- Traffic Flow
- Temporary Concrete Safety Barrier pinned to Roadway
- Temporary Asphalt Pavement

J:\PROJECTS\2013\104064L_DOUGLAS BRIDGE AT LINDEN\CIVIL\CAD\T113545702.DWG

STATE	PROJECT NO.	YEAR	SHEET NO.	TOTAL SHEETS
KANSAS	87 N-0611-01	2015	52	51



CONSTRUCTION PLANS FOR
DOUGLAS AVENUE BRIDGE AT LINDEN
 WICHITA, KANSAS

©2013 MKEC Engineering
 All Rights Reserved
 www.mkec.com
 These drawings and their contents, including, but not limited to, all concepts, designs, & ideas are the exclusive property of MKEC Engineering (MKEC), and may not be used or reproduced in any way without the express consent of MKEC.

CROSS-SECTIONS
 STA. 102+22.75 TO
 STA. 102+75.75

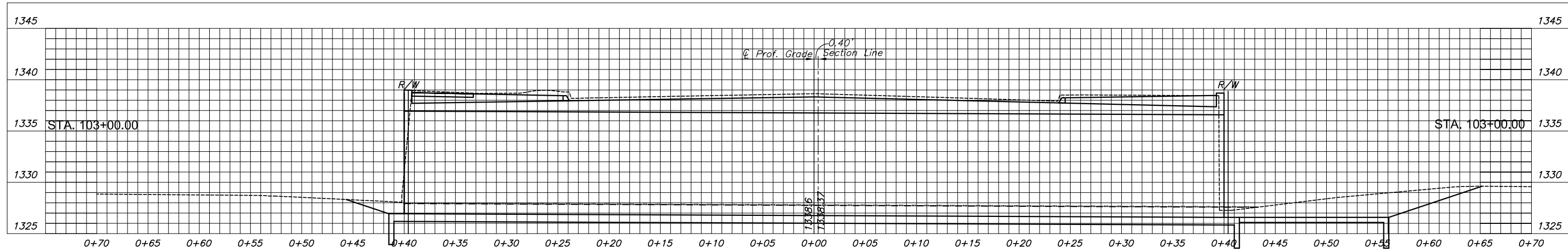
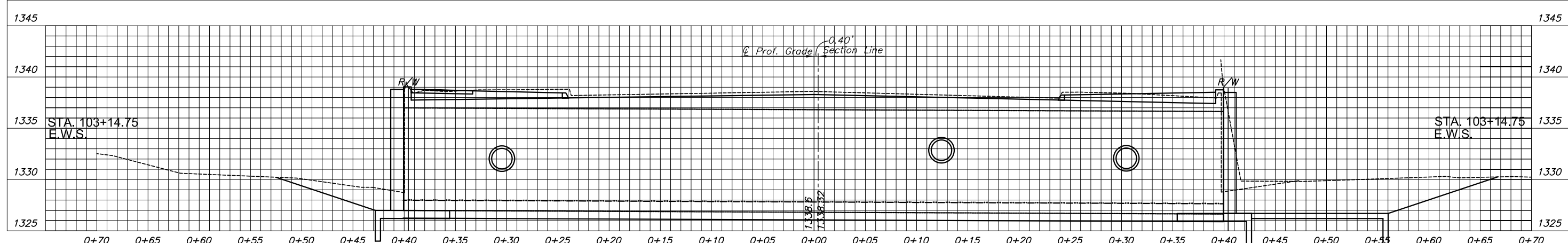
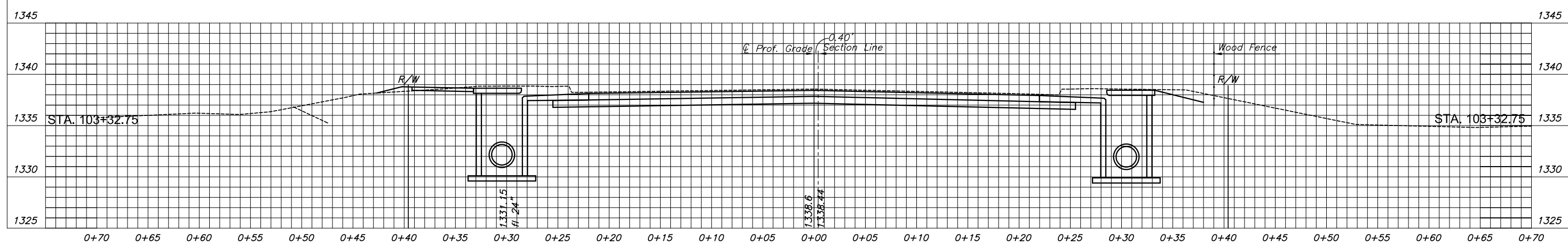
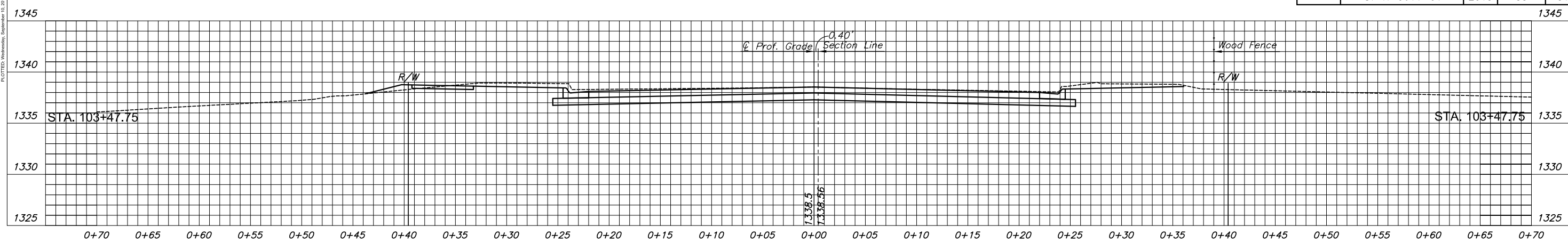
PROJECT NO.	472-85119	
DATE	FEB. 2014	
SCALE	1"=5'	
DESIGNED	DRAWN	CHECKED
JRA	DPG	JRA

NO.	REVISION	DATE

SHEET NO. 52 OF 51

PLOTTER: Wednesday, September 10, 2014 @ 02:28PM

STATE	PROJECT NO.	YEAR	SHEET NO.	TOTAL SHEETS
KANSAS	87 N-0611-01	2015	53	51



CONSTRUCTION PLANS FOR
DOUGLAS AVENUE BRIDGE AT LINDEN
 WICHITA, KANSAS

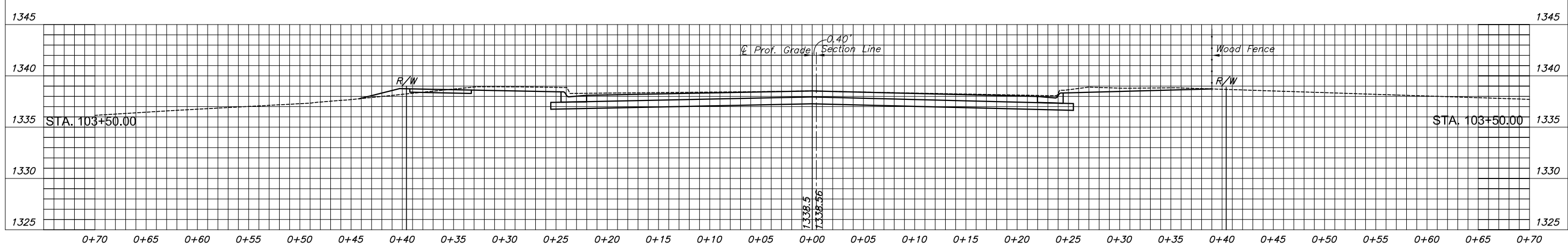
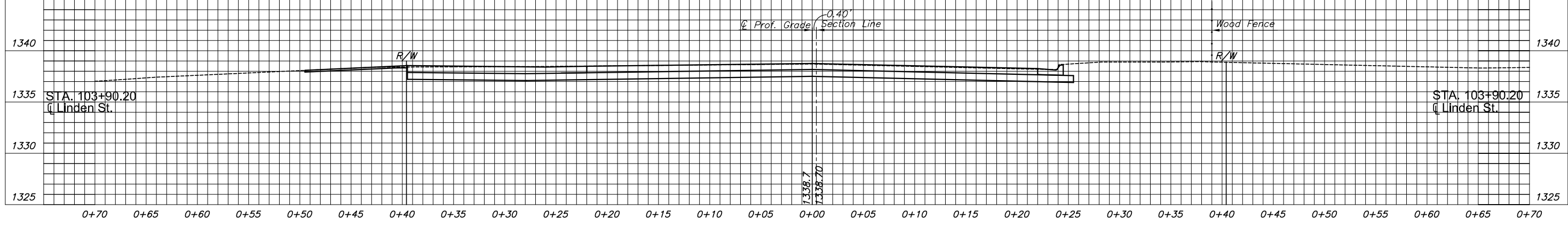
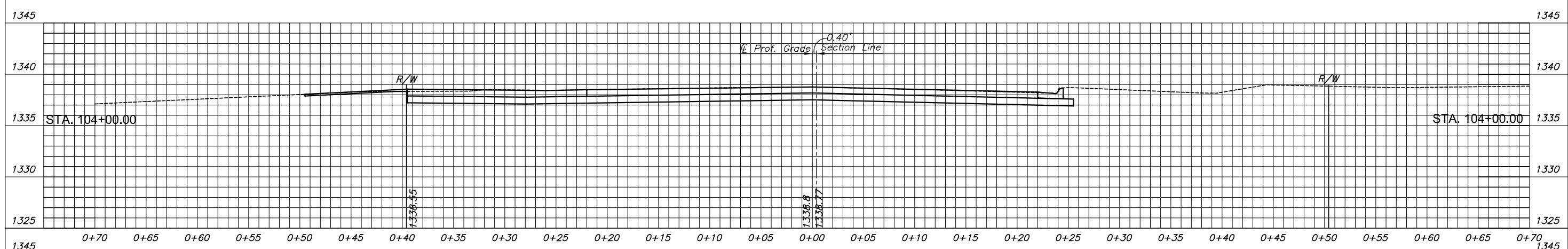
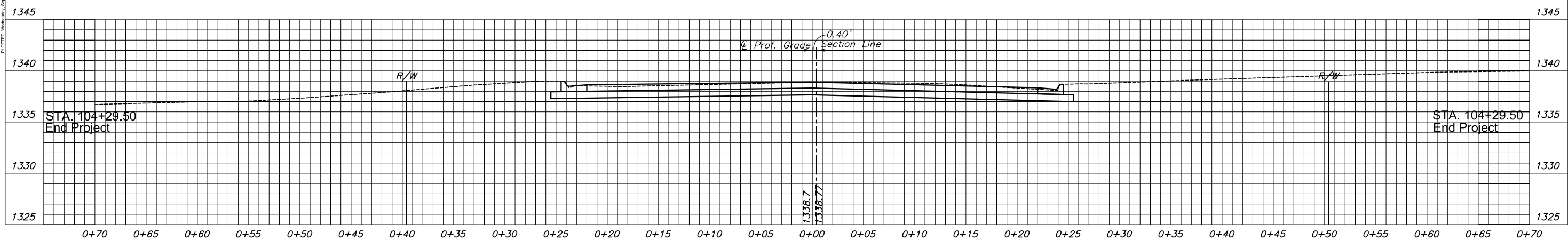
©2013 MKEC Engineering
 All Rights Reserved
 www.mkec.com
 These drawings and their contents, including, but not limited to, all concepts, designs, & ideas are the exclusive property of MKEC Engineering (MKEC), and may not be used or reproduced in any way without the express consent of MKEC.

CROSS-SECTIONS
 STA. 103+00.00 TO
 STA. 103+47.75

PROJECT NO.	472-85119	
DATE	FEB. 2014	
SCALE	1"=5'	
DESIGNED	DRAWN	CHECKED
JRA	DPG	JRA

NO.	REVISION	DATE

STATE	PROJECT NO.	YEAR	SHEET NO.	TOTAL SHEETS
KANSAS	87 N-0611-01	2015	54	51



CONSTRUCTION PLANS FOR
DOUGLAS AVENUE BRIDGE AT LINDEN
 WICHITA, KANSAS

©2013 MKEC Engineering
 All Rights Reserved
 www.mkec.com
 These drawings and their contents, including, but not limited to, all concepts, designs, & ideas are the exclusive property of MKEC Engineering (MKEC), and may not be used or reproduced in any way without the express consent of MKEC.

**CROSS-SECTIONS
 STA. 103+50.00 TO
 STA. 104+29.50**

PROJECT NO.	472-85119	
DATE	FEB. 2014	
SCALE	1"=5'	
DESIGNED	DRAWN	CHECKED
JRA	DPG	JRA

NO.	REVISION	DATE