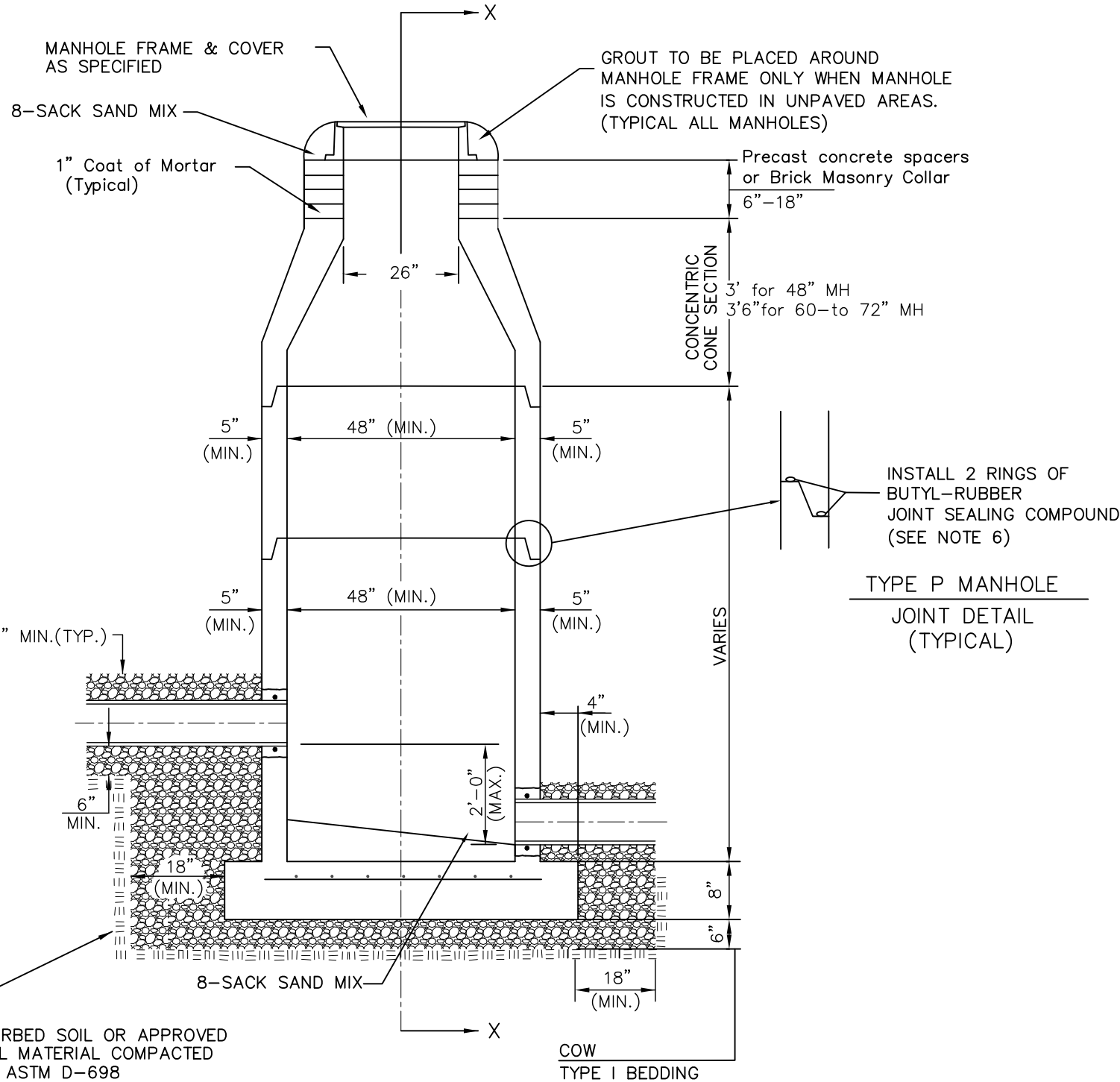
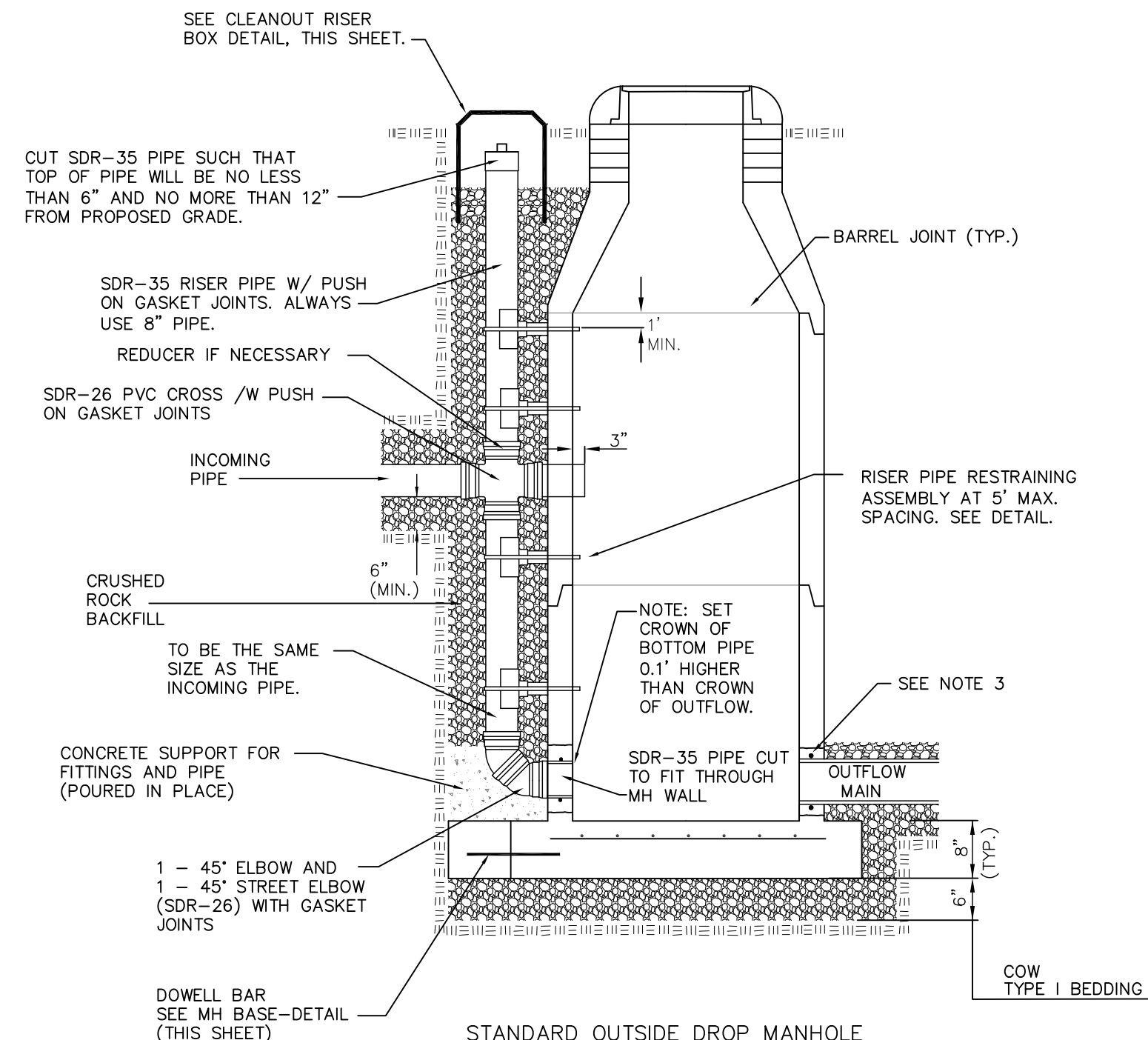


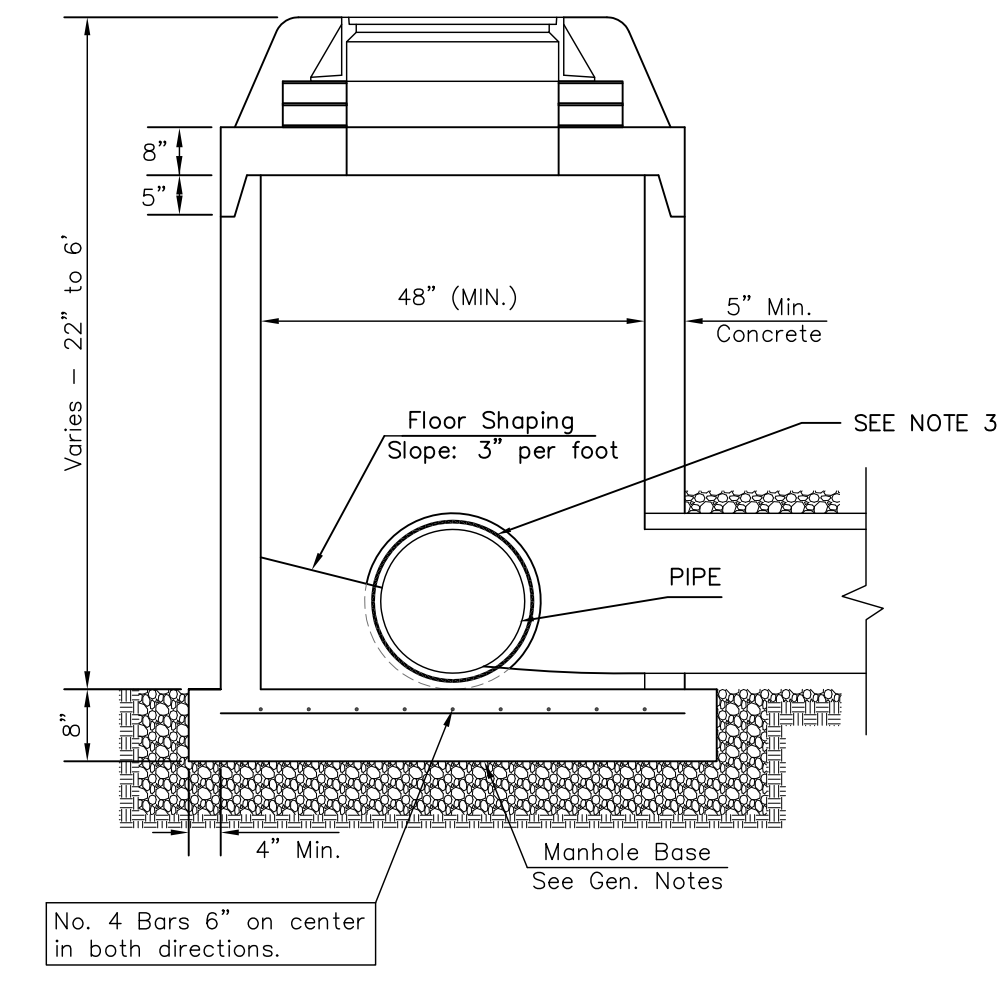
DOG HOUSE MANHOLE
(OVER EXISTING PIPE)
Not to Scale



STANDARD MANHOLE
Not to Scale



STANDARD OUTSIDE DROP MANHOLE
Not to Scale

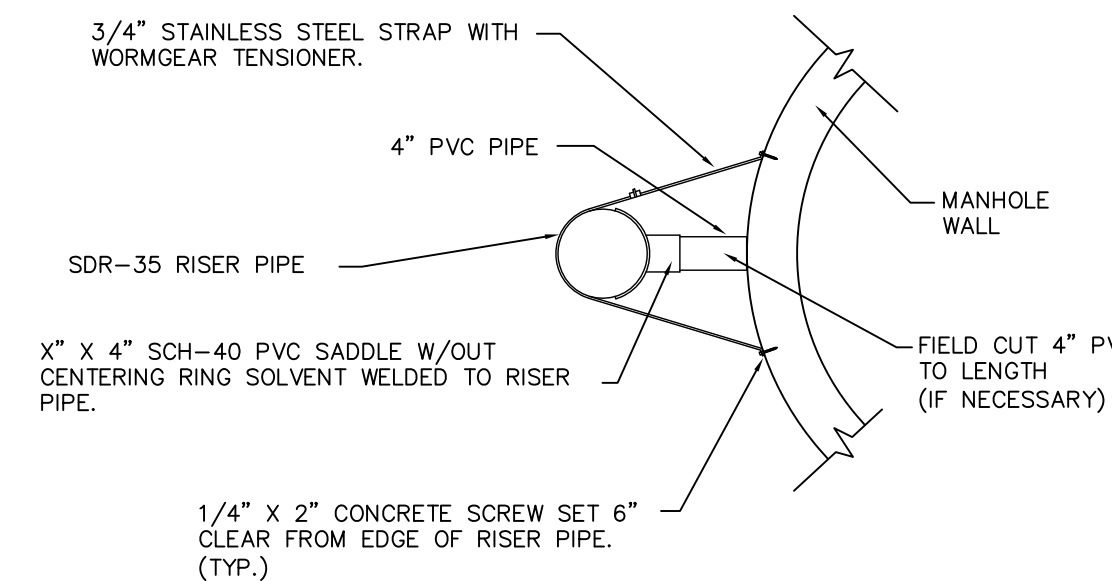


SHALLOW MANHOLE
Not to Scale

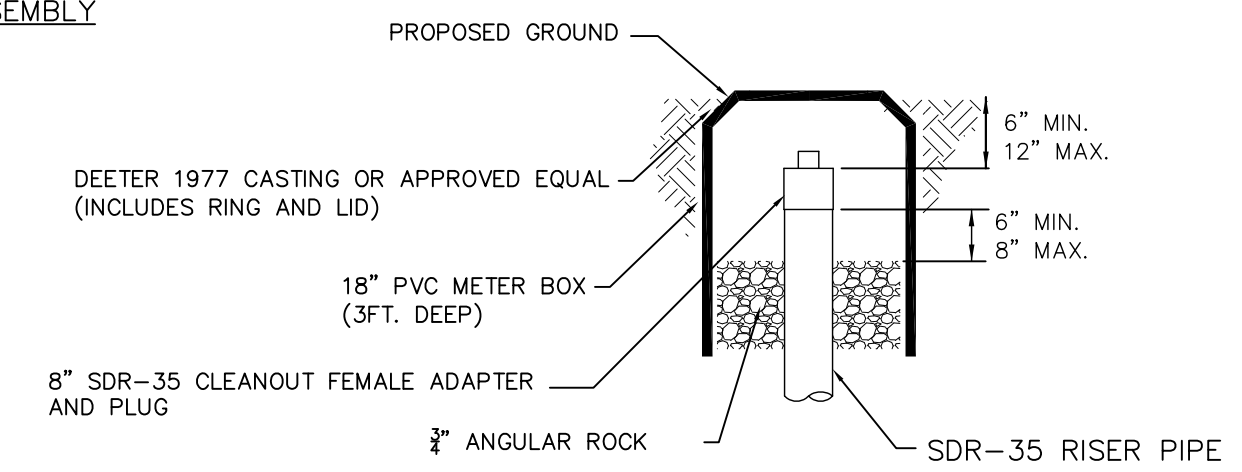
= COW TYPE I BEDDING
 = UNDISTURBED SOIL

PRECAST MANHOLE GENERAL NOTES

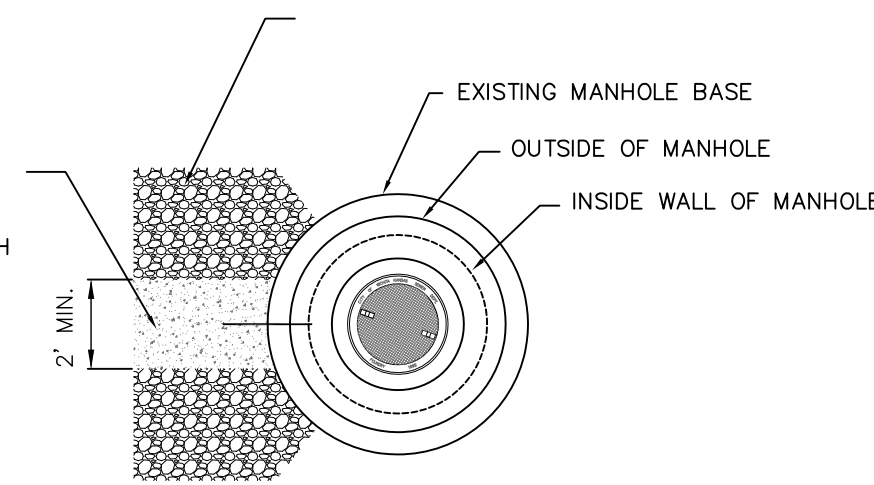
- ALL PRECAST CONCRETE MANHOLE SECTIONS SHALL CONFORM TO THE LATEST REVISIONS OF A.S.T.M. C478 AS MODIFIED BY THE SPECIFICATIONS.
- NON-SHRINK GROUT SHALL BE NON-METALLIC TYPE.
- APPROVED FLEXIBLE WATERSTOP SHALL BE INSTALLED TO JOIN THE SEWER PIPE TO THE MANHOLE WALL. THE SEWER PIPE SHALL BE SUPPORTED WITH CRUSHED ROCK A MINIMUM OF 3 FEET FROM THE MANHOLE WALL AND TO THE FIRST JOINT FOR V.C.P. SUCH THAT THE JOINT REMAINS FLEXIBLE.
- ALL INSIDE SURFACES OF THE CONCRETE MANHOLE WHICH WOULD BE EXPOSED TO SEWER GAS SHALL BE COATED PER SECTION 804.4 OF STANDARD SPECIFICATIONS.
- EXTERIOR MANHOLE WALLS SHALL BE COATED PER SECTION 804.4 OF STANDARD SPECIFICATIONS.
- JOINT SEALING COMPOUND SHALL BE PER 804.4 OF STANDARD SPECIFICATIONS.
- ALL MANHOLE SECTION JOINTS THAT WILL BE IN GROUNDWATER OR GREATER THAN 12' DEEP SHALL BE WRAPPED WITH AN EXTERNAL JOINT SEAL PER SECTION 804.4 OF STANDARD SPECIFICATIONS, AS INDICATED BY THE PLANS.
- PRECAST MANHOLES SHALL BE SET AT LEAST 4 INCHES INTO THE MANHOLE BASE FOR DOG HOUSE MANHOLES.
- TOP OF MANHOLE FLOOR SLAB SHALL BE AT LEAST 3 INCHES BELOW THE FLOW LINE OF THE OUTLET PIPE TO INSURE SUFFICIENT MINIMUM THICKNESS OF SHAPED INVERT.
- LIFTING HOLES SHALL BE FILLED WITH NON-SHRINK GROUT AND THE INTERIOR SURFACE COATED AS SPECIFIED.
- MORTAR USED IN MASONRY CONSTRUCTION SHALL CONTAIN 8 SACKS OF CEMENT PER CUBIC YARD. CONCRETE USED IN MANHOLE BASES SHALL CONFORM TO THE REQUIREMENTS OF CONCRETE FOR CONCRETE PAVEMENT CONSTRUCTION AS SPECIFIED IN THE CITY STANDARD PAVING SPECIFICATIONS USING CITY CONCRETE PAVEMENT MIX WITHOUT AIR ENTRAINING ADMIXTURE. MORTAR SHALL BE PLACED AROUND THE MANHOLE RING AS SHOWN ON THE DRAWINGS WHEN MANHOLES ARE CONSTRUCTED IN UNPAVED AREAS. COMPLETED MANHOLE SHALL BE WITHOUT LEAKS AND WATER TIGHT.
- REINFORCING STEEL SHALL BE INSTALLED IN THE MANHOLE BASES AND SHALL CONSIST OF NO.4 BARS PLACED ON 6" CENTERS IN BOTH DIRECTIONS. THE MANHOLE BASE REINFORCEMENT SHALL BE PLACED AT LEAST 3" ABOVE THE BOTTOM OF THE MANHOLE BASE. ALL COSTS FOR FURNISHING AND INSTALLING REINFORCING STEEL SHALL BE INCLUDED IN THE UNIT PRICE BID FOR THE MANHOLE.
- WALL THICKNESS SHALL BE 1" GREATER THAN MANHOLE DIAMETER IN FEET.
- OPENINGS SHALL BE CORE DRILLED INTO THE MANHOLE WALL WHEN OUTSIDE DROPS ARE CONSTRUCTED ON EXISTING MANHOLES. SUCH OPENINGS DRILLED INTO EXISTING MANHOLES SHALL BE AS SMALL AS PRACTICAL TO FACILITATE INSTALLING AND GROUTING THE NEW PIPE IN PLACE. WATERSTOP GASKETS SHALL BE USED WITH P.V.C. PIPE. THE NEW PIPE SHALL BE GROUTED INTO THE OPENING USING AN APPROVED NONSHRINK GROUT FOR THE FULL MANHOLE WALL THICKNESS. THE EXTERIOR OF THE COMPLETED CONNECTION SHALL BE SEALED WITH AN APPROVED BITUMINOUS COATING SUCH THAT THE CONNECTION WILL BE WATER TIGHT. FLOOR OF MANHOLE SHALL BE MODIFIED TO FORM NEW FLOW CHANNEL FOR THE NEW CONNECTION AS INDICATED BY THE DRAWING. THIS WORK, INCLUDING MODIFICATION OF MANHOLE FLOOR, SHALL BE PAID FOR AT THE UNIT PRICE BID FOR OUTSIDE DROP STACK CONSTRUCTED ON EXISTING MANHOLE.
- THE FLOORS OF ALL MANHOLES SHALL BE SHAPED WITH FLOW CHANNELS SUCH THAT THE MANHOLES WILL BE SELF CLEANING AND FREE OF AREAS WHERE SOLIDS COULD BE DEPOSITED AS SEWAGE FLOWS THROUGH THE MANHOLE FROM ALL INLET PIPES TO THE OUTLET PIPE. FLOW CHANNELS SHALL BE FORMED TO MATCH THE BOTTOM HALVES OF THE INFLOWING PIPES AND THE OUTFLOWING PIPE AS SHOWN BY THE DRAWINGS. MANHOLE FLOORS SHALL HAVE SLOPES OF 3 INCHES PER FOOT IN THE AREAS OUTSIDE OF THE FLOW CHANNELS SLOPED TOWARD THE FLOW CHANNELS. PIPES LAID THROUGH MANHOLES SHALL HAVE THE TOP HALF REMOVED TO NEAT LINES FOR THE FULL INSIDE DIAMETER OF THE MANHOLE. MANHOLE FLOORS SHALL THEN BE SHAPED AROUND THE BOTTOM HALF OF THE PIPE WHICH FORMS THE FLOW CHANNEL.
- MANHOLE COVER CASTINGS AND MANHOLE FRAME CASTINGS SHALL CONFORM TO THE REQUIREMENTS AS INDICATED IN THE STANDARD SPECIFICATIONS AND AS SHOWN IN THE STANDARD DETAIL DRAWING.
- THE VERTICAL DROP IN STANDARD MANHOLES SHALL NOT EXCEED 2' REGARDLESS OF PIPE SIZE. THE CROWNS OF INFLOWING PIPES SHALL NEVER BE SET LOWER THAN THE CROWN OF THE OUTFLOWING PIPE.
- STANDARD MANHOLES SHALL BE BID AS STANDARD MANHOLES FOR THE TYPE AND DIAMETER INDICATED. OUTSIDE DROP MANHOLES SHALL BE BID AS STANDARD OUTSIDE DROP MANHOLES FOR THE TYPE AND DIAMETER INDICATED. ALL MANHOLE DIAMETERS WILL BE 4' UNLESS INDICATED OTHERWISE.
- PRECAST CONCRETE SPACERS OR BRICK MASONRY COLLAR SHALL BE INSTALLED BETWEEN THE CAST IRON FRAME AND THE CONCENTRIC CONE. THE COLLAR WILL HAVE 8" WALLS AND A VERTICAL HEIGHT OF 6" MINIMUM AND 18" MAXIMUM. A 1" COAT OF MORTAR WILL BE PLASTERED ON THE OUTSIDE OF THE COLLAR. THE USE OF PRE-CAST CONCRETE SPACERS FOR MANHOLE TOP ADJUSTMENT IS ALSO ALLOWED.
- THE FULL DIAMETER OF THE MANHOLE SHALL EXTEND THE ENTIRE DEPTH OF THE MANHOLE TO THE CONE SECTION. NO REDUCTION IN MANHOLE DIAMETER WILL BE ALLOWED.
- REFER TO PLANS FOR SIZE OF OUTSIDE DROP RISER, SADDLES AND CROSS.



RISER PIPE RESTRAINING ASSEMBLY
Not to Scale



CLEANOUT RISIER BOX DETAIL
Not to Scale



MH BASE DETAIL
Not to Scale

SANITARY SEWER MANHOLE DIAMETERS		
DIAMETER	DEPTH	PIPE SIZE
4'	0'-15'	8"-18"
5'	>15'-30'	21"-30"
6'	>30'	36"-60"



REVISED JANUARY 2015

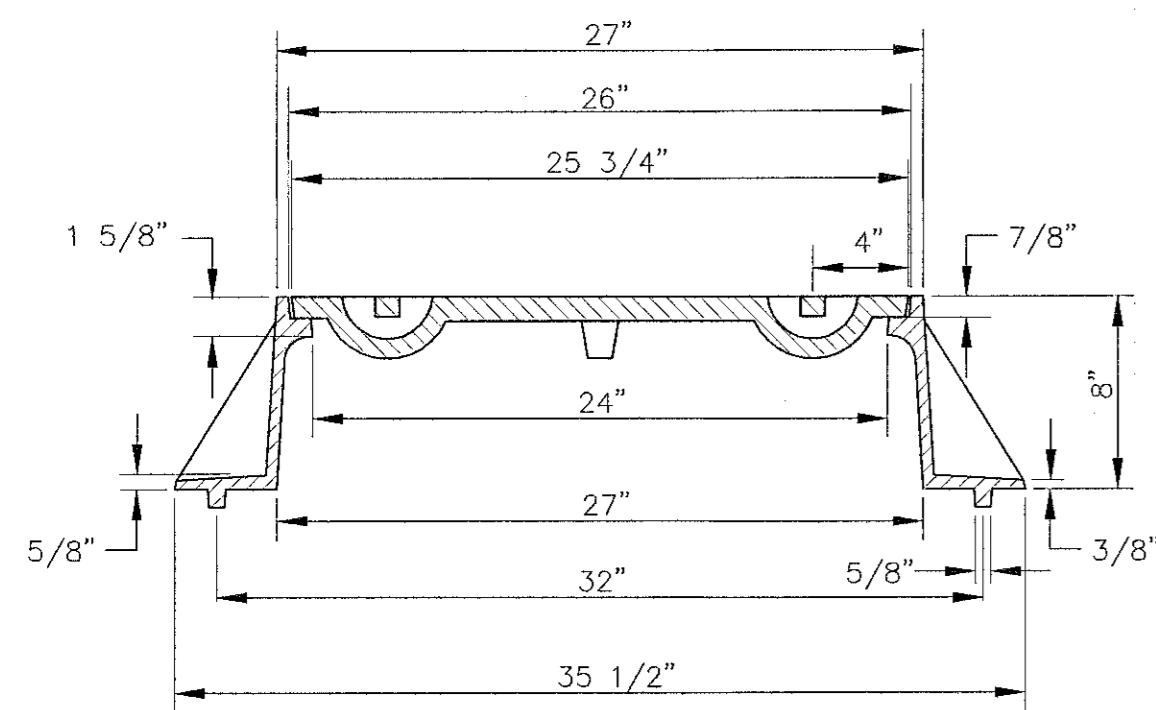
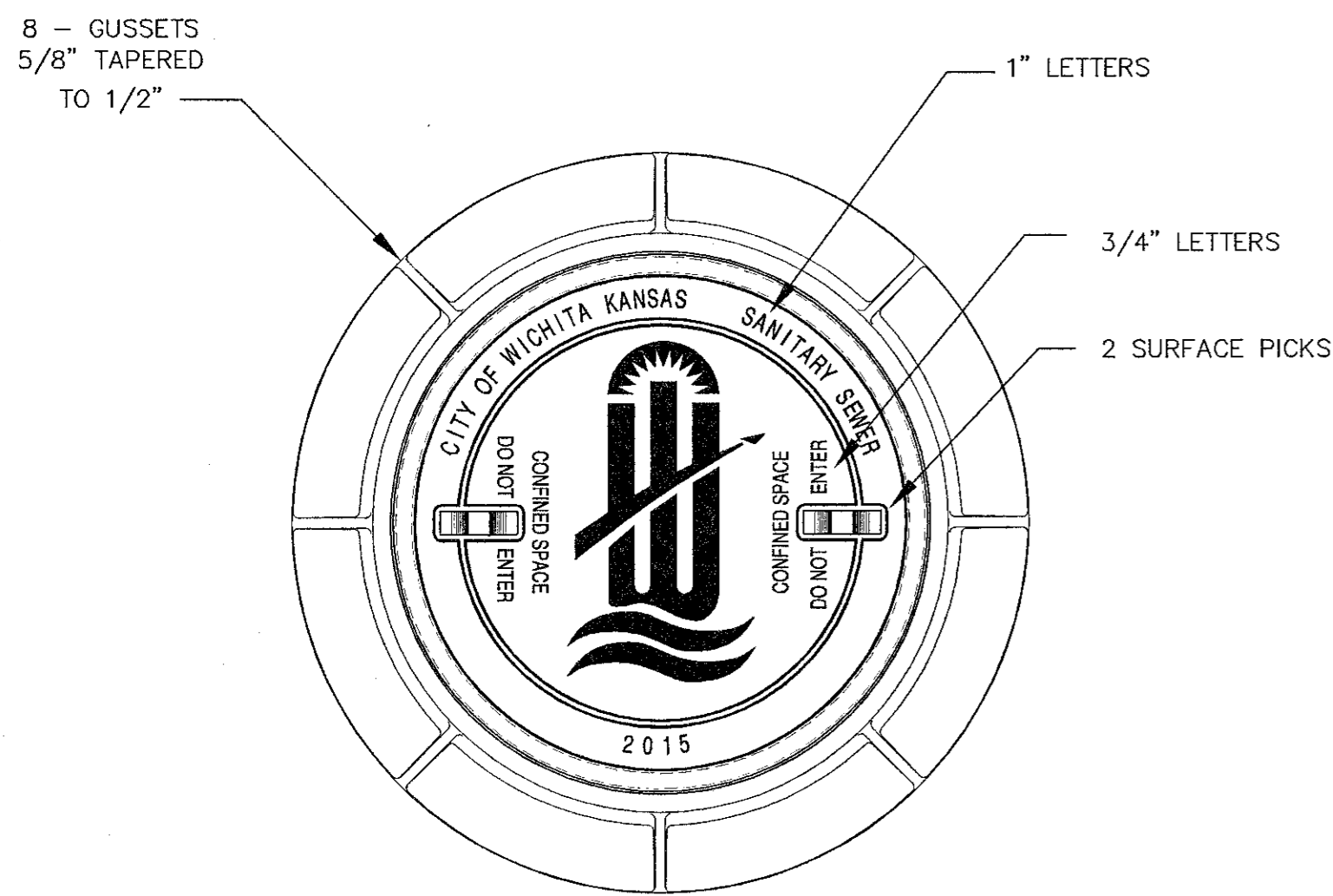
PRECAST SANITARY SEWER MANHOLE

CITY ENGINEER
GARY JANZEN, P.E.

PROJECT NUMBER	OCA NUMBER	DATE
----------------	------------	------

CITY ENGINEER'S OFFICE
CITY HALL - SEVENTH FLOOR
455 NORTH MAIN STREET
WICHITA, KANSAS 67202-1620
(316) 268-4501

SHEET
2 of 7

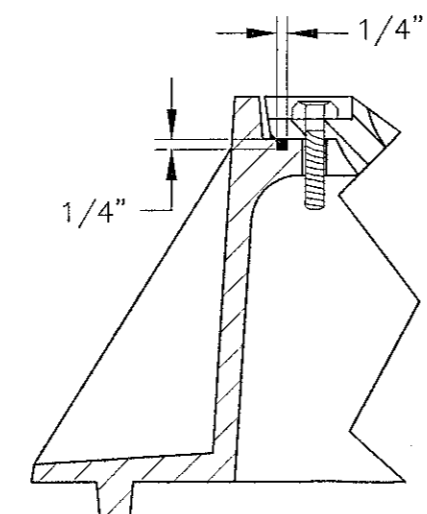
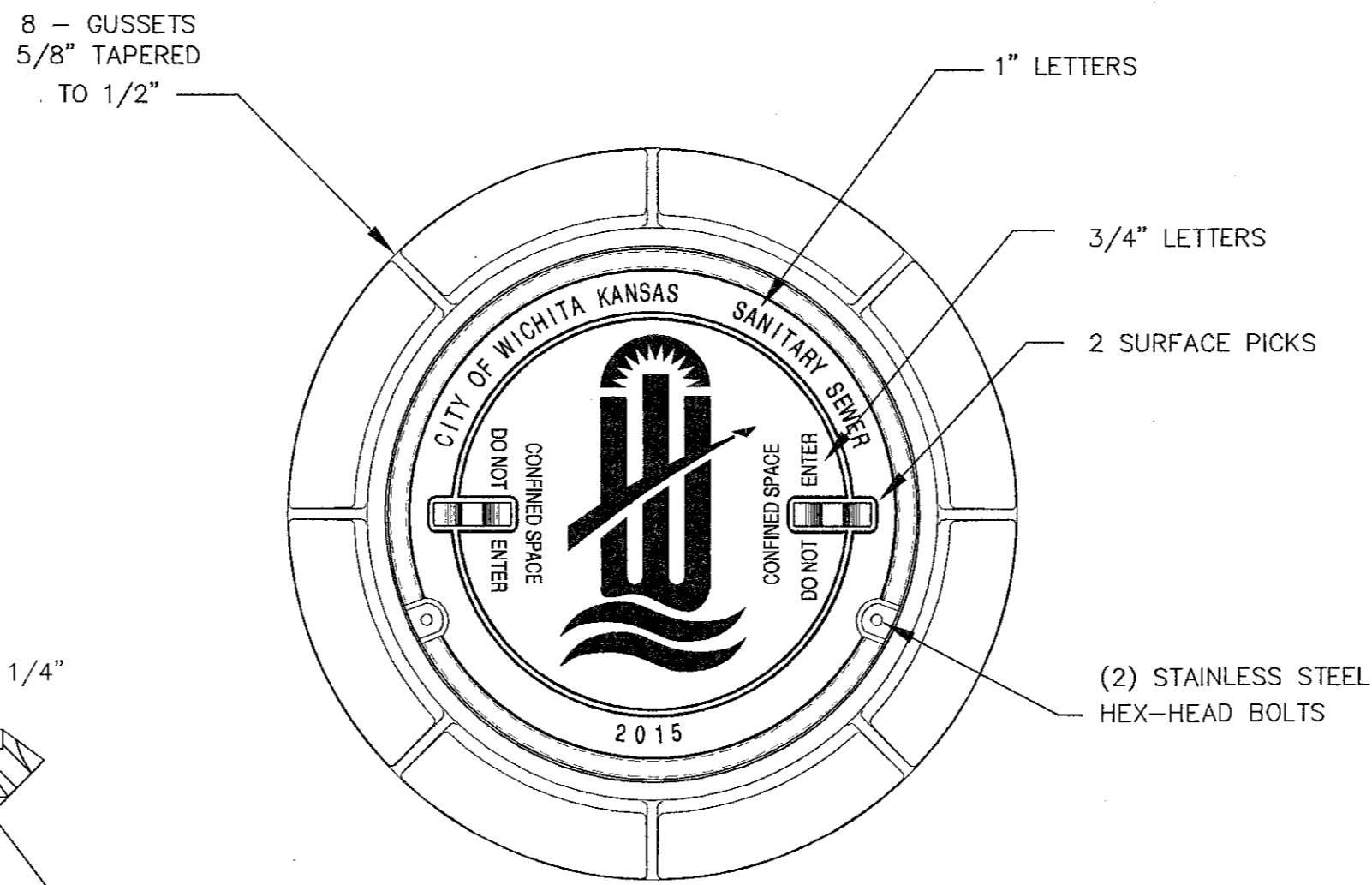


STANDARD MANHOLE FRAME & COVER

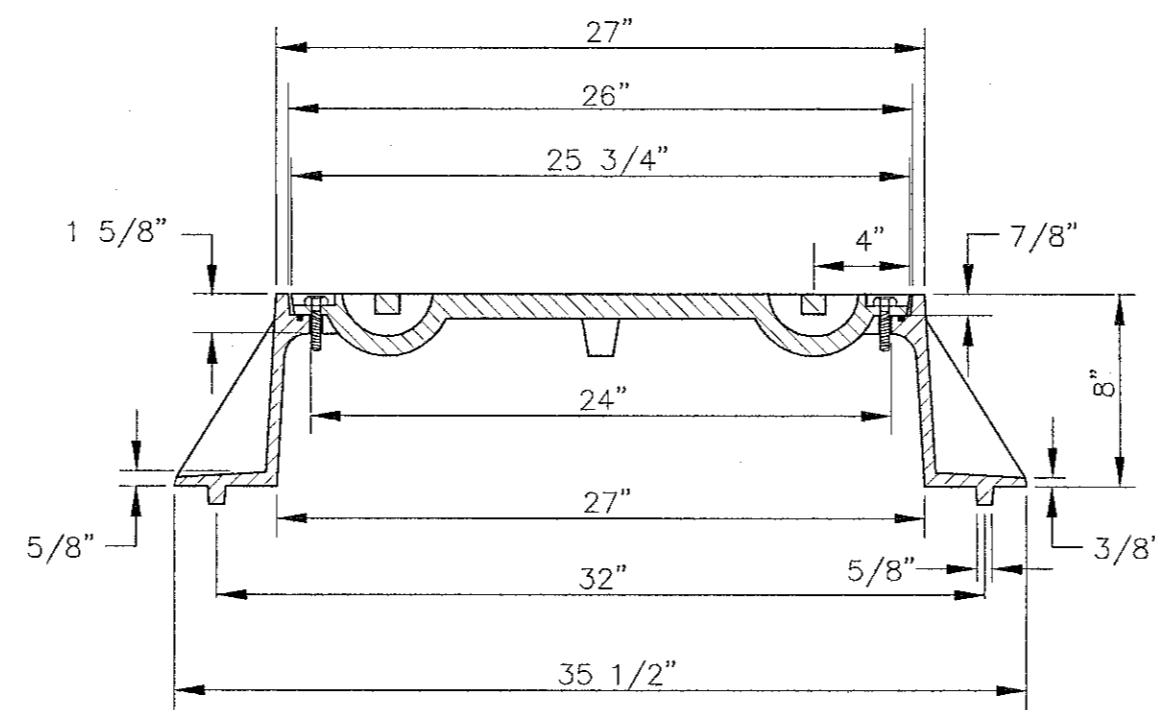
DEETER #1261 OR EJIW #1936-Z1

NOTE:

1. FURNISHED WITH MACHINED HORIZONTAL BEARING SURFACE.



DETAIL OF T-GASKET



BOLT DOWN MANHOLE FRAME & COVER

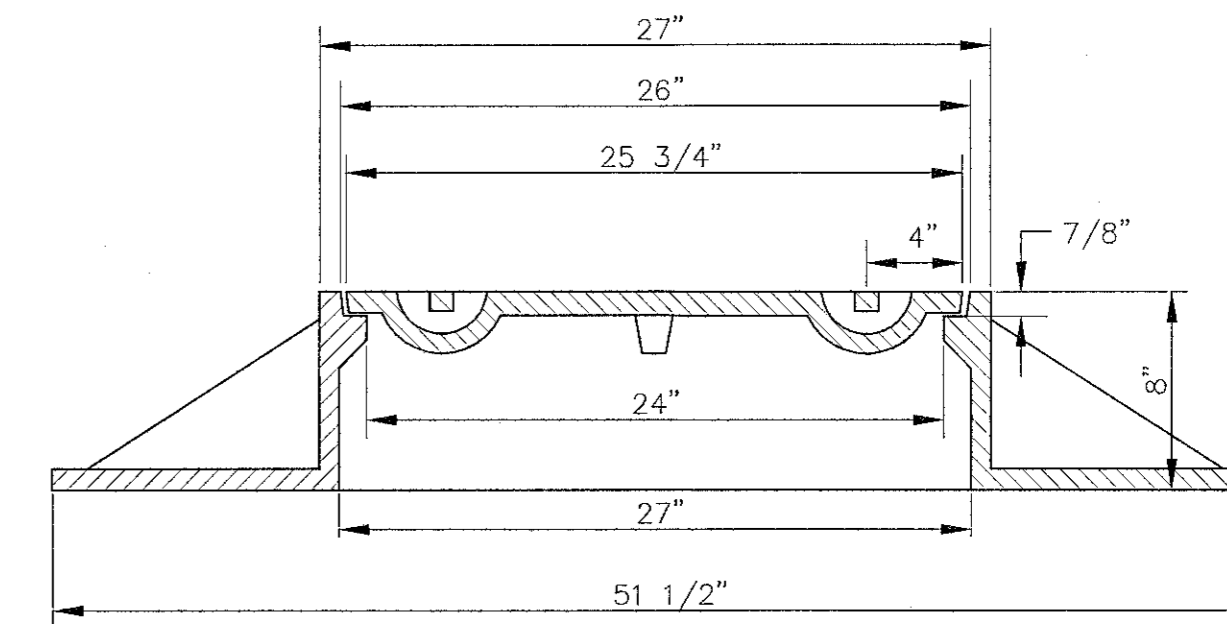
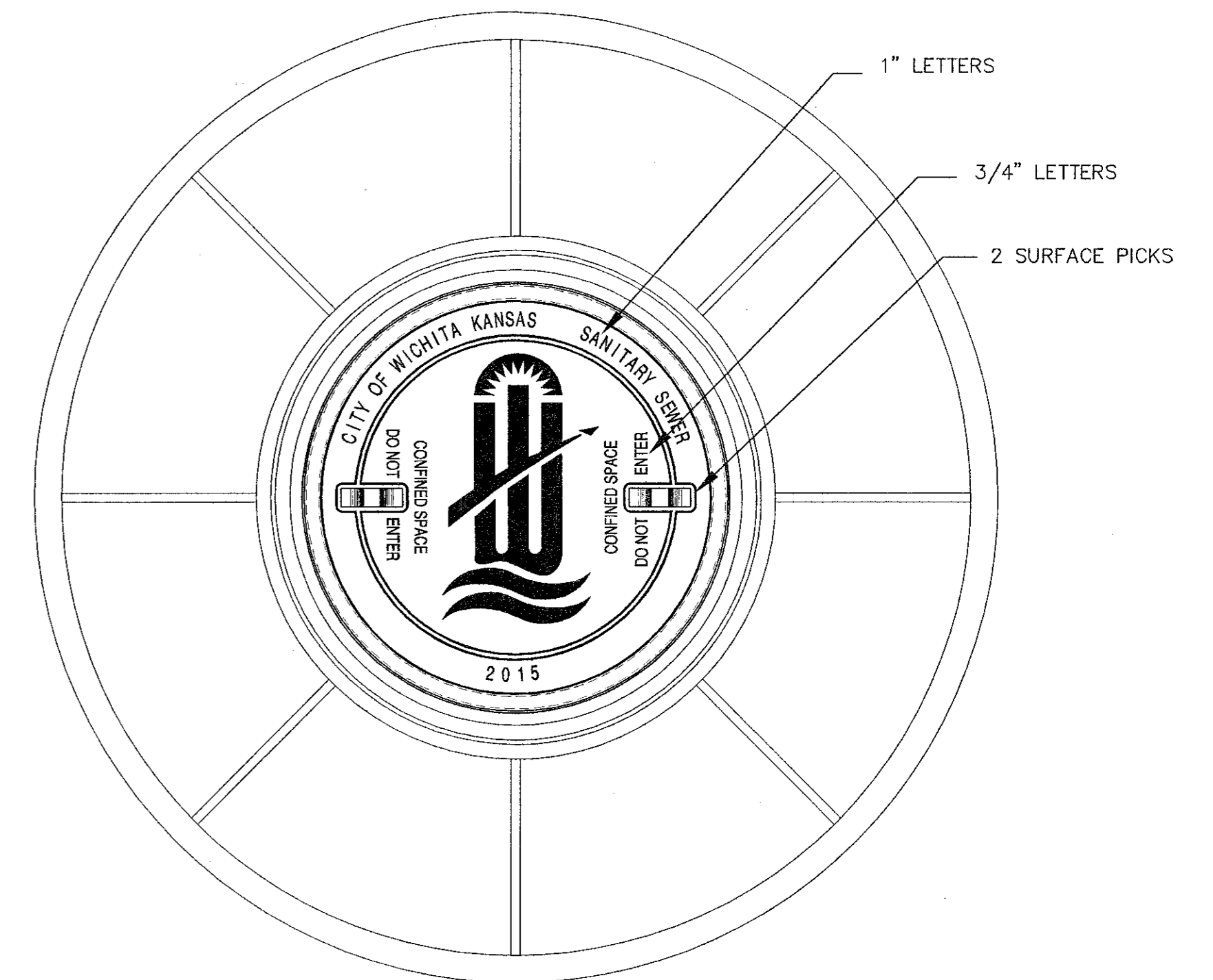
DEETER #1261 OR EJIW #1936-Z1

NOTE:

1. FURNISHED WITH MACHINED HORIZONTAL BEARING SURFACE.
2. FURNISHED WITH A T-GASKET IN THE FRAME.

GENERAL NOTES

1. MANHOLE CASTINGS SHALL BE MANUFACTURED USING GOOD QUALITY GRAY IRON CONFORMING TO CLASS 30 OF A.S.T.M. DESIGNATION A-48. DIMENSIONS SHOWN ON THE DETAILED DRAWINGS SHALL BE CONSIDERED AS MINIMUM REQUIREMENTS AND ANY DEVIATIONS FROM THE DIMENSIONS SHOWN MUST BE SPECIFICALLY APPROVED. THE FINISHED CASTINGS SHALL BE OF UNIFORM QUALITY, FREE FROM BLOWHOLES, POROSITY, HARD SPOTS, SHRINKAGE DISTORTIONS OR OTHER DEFECTS.
2. MANHOLE CASTINGS SHALL BE MANUFACTURED SUCH THAT A COVER MANUFACTURED BY ANY ONE FOUNDRY WILL FIT INTERCHANGEABLY INTO A FRAME MANUFACTURED BY ANOTHER FOUNDRY AND STILL MEET ALLOWABLE CLEARANCES AND NON-ROCKING REQUIREMENTS. THIS WILL REQUIRE MANUFACTURING OF THE MATCHING FACES ON THE COVER AND THE FRAME TO CLOSE TOLERANCES.
3. THE OUTSIDE CIRCUMFERENCE OF THE VERTICAL FACE OF THE COVER AND THE INSIDE CIRCUMFERENCE OF THE VERTICAL FACE IN THE FRAME RECESS SHALL BE MANUFACTURED TO TOLERANCES SUCH THAT THE CLEARANCE BETWEEN THE COVER AND FRAME WILL NOT EXCEED 1/8" AT ANY POINT AROUND THE CIRCUMFERENCE OF THE COVER. THE SEATING SURFACES BETWEEN THE COVER AND FRAME SHALL BE MACHINED SUCH THAT THESE SEATING SURFACES SHALL MAKE FULL CONTACT FOR THEIR FULL CIRCUMFERENCE TO PRECLUDE THE COVER FROM ROCKING IN THE FRAME.
4. THE MANHOLE FRAME AND COVER SHALL BE MARKED WITH LETTERING INDICATING THE NAME OF THE MANUFACTURER AND THE YEAR WHEN THE COVER OR FRAME WAS CAST. THE COVER SHALL BE FURTHER IDENTIFIED WITH REGARDS TO OWNERSHIP USING LETTERS AT LEAST 1 INCH IN HEIGHT. THIS IDENTIFICATION SHALL BE "CITY OF WICHITA SANITARY SEWER". THE TOP SURFACE OF THE COVER SHALL BE MANUFACTURED IN WITH CITY OF WICHITA DESIGN AS INDICATED ON THE DRAWINGS. SMOOTH BLOCKOUTS SHALL BE UTILIZED TO HIGHLIGHT THE LETTERING ON THE COVER SURFACE. THE TOTAL AREA OF SMOOTH SURFACE BLOCKOUT SHALL NOT EXCEED THE AREA AS INDICATED ON THE DRAWING. POSITIONING OF SMOOTH BLOCKOUTS AND LETTERING MAY VARY FROM THAT SHOWN ON THE DETAILED DRAWING.

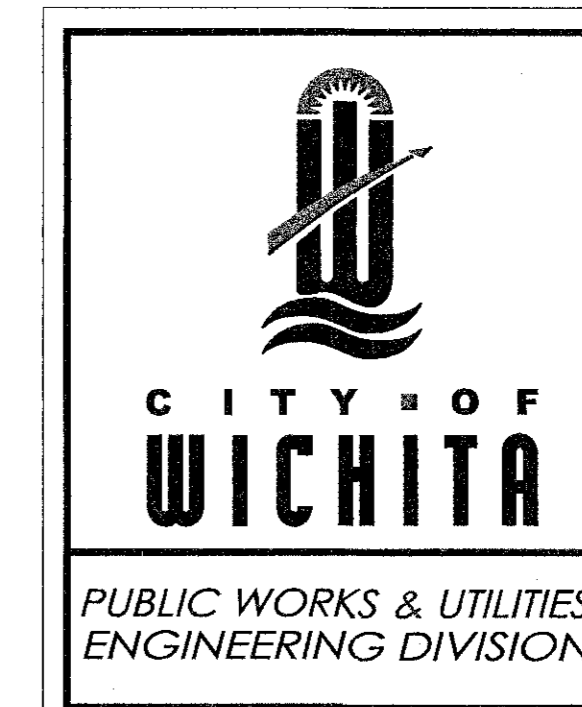


WIDE FLANGED FRAME & COVER

DEETER #1261A

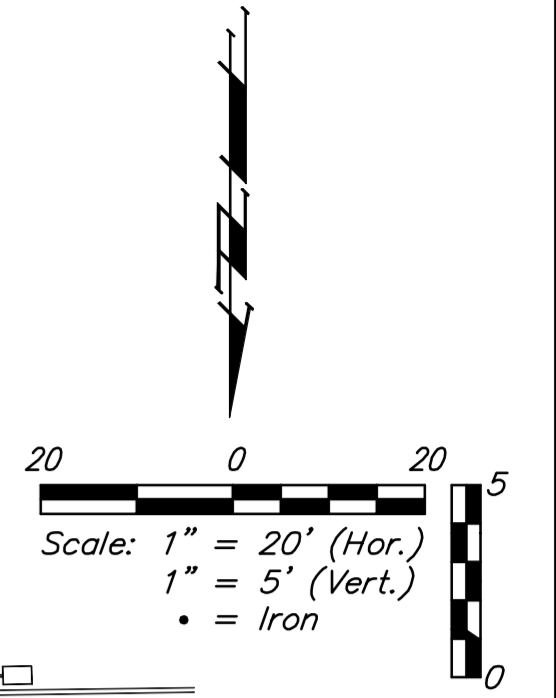
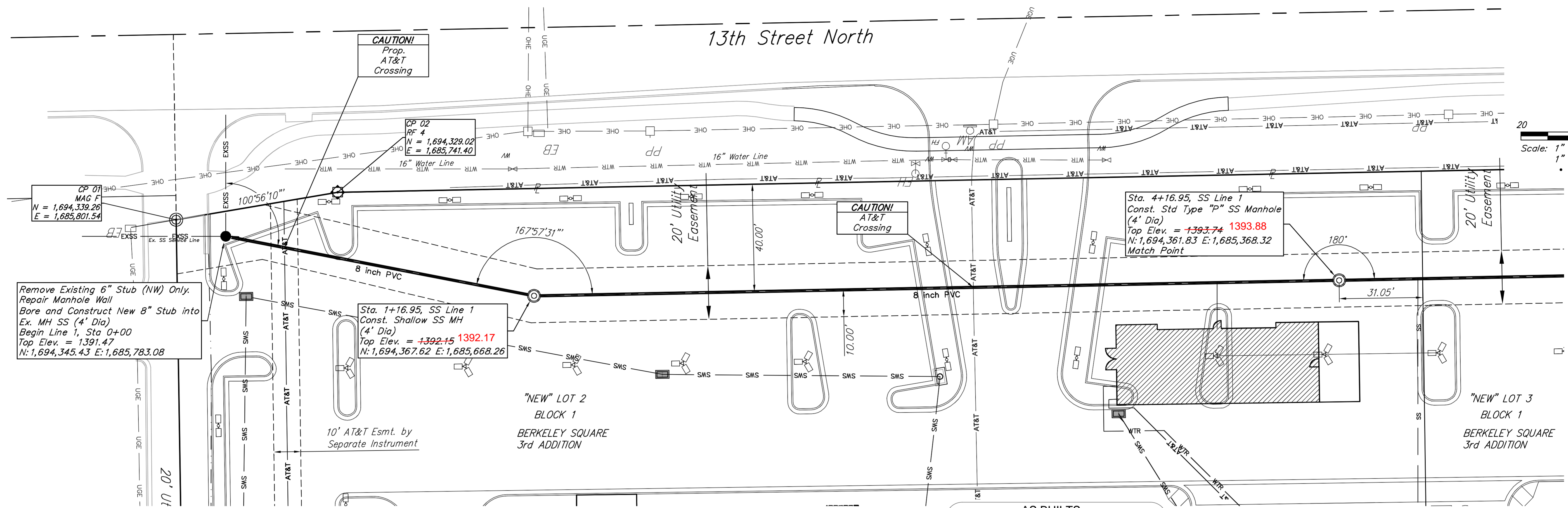
NOTE:

1. FURNISHED WITH MACHINED HORIZONTAL BEARING SURFACE.



MANHOLE FRAME AND COVER (SANITARY SEWER)		
CITY ENGINEER GARY JANZEN, P.E.		
PROJECT NUMBER	OCA NUMBER	DATE
CITY ENGINEER'S OFFICE CITY HALL - SEVENTH FLOOR 455 NORTH MAIN STREET WICHITA, KANSAS 67202-1620 (316) 268-4501		SHEET 3 of 7

REVISED: JUNE 2015



Remove Existing 6" Stub (NW) Only. Repair Manhole Wall Bore and Construct New 8" Stub into Ex. MH SS (4' Dia) Begin Line 1, Sta 0+00 Top Elev. = 1391.47 N: 1,694,345.43 E: 1,685,783.08

Sta. 1+16.95, SS Line 1 Const. Shallow SS MH (4' Dia) Top Elev. = 1392.15 1392.17 N: 1,694,367.62 E: 1,685,668.26

Sta. 4+16.95, SS Line 1 Const. Std Type "P" SS Manhole (4' Dia) Top Elev. = 1393.74 1393.88 N: 1,694,361.83 E: 1,685,368.32 Match Point

AS BUILTS

Contractor: **Ewartz Excavation**
10/28/2015

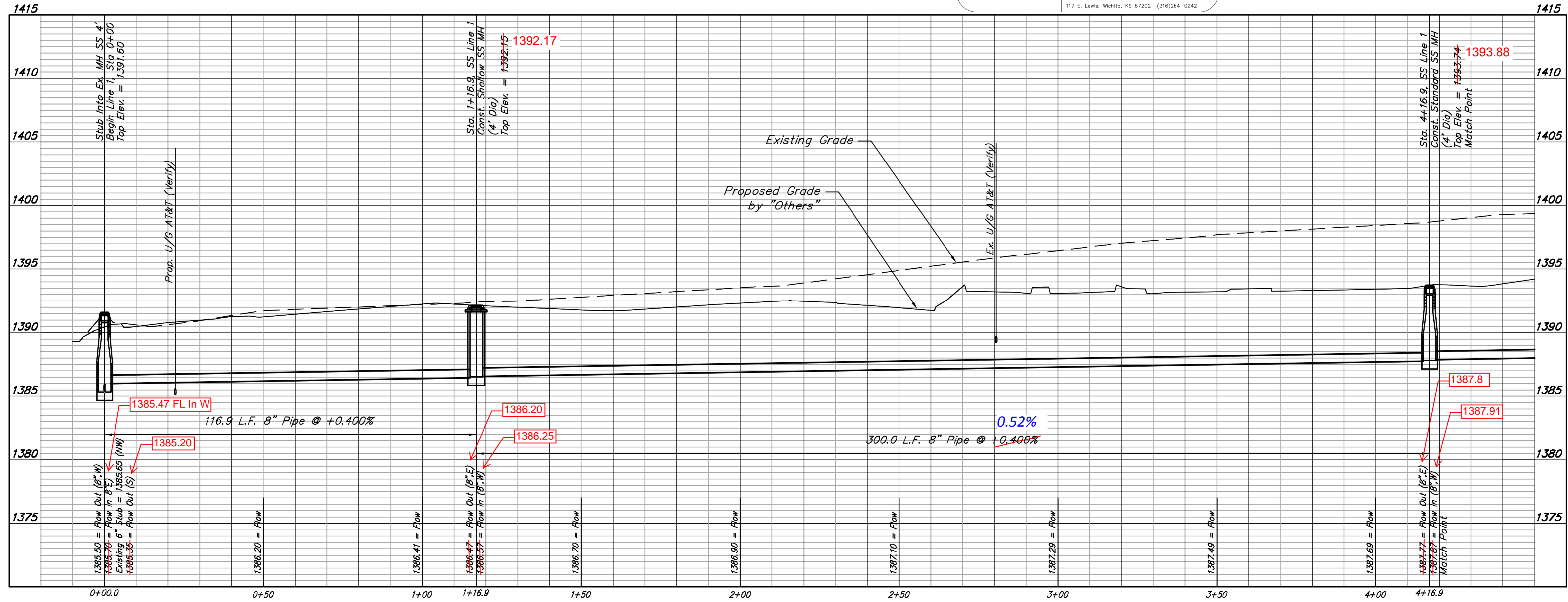
Project Inspector: **Matt Perez**

KEMILLER ENGINEERING PA
117 E. Lewis, Wichita, KS 67202 (316)264-0242

BENCHMARKS

SITE BENCHMARK-1
Square cut in west edge of catch basin. Basin on west curb line of Greenwich Road, East of Jaguar/Land Rover Dealership. Elevation=1381.56 (NAVD 88)

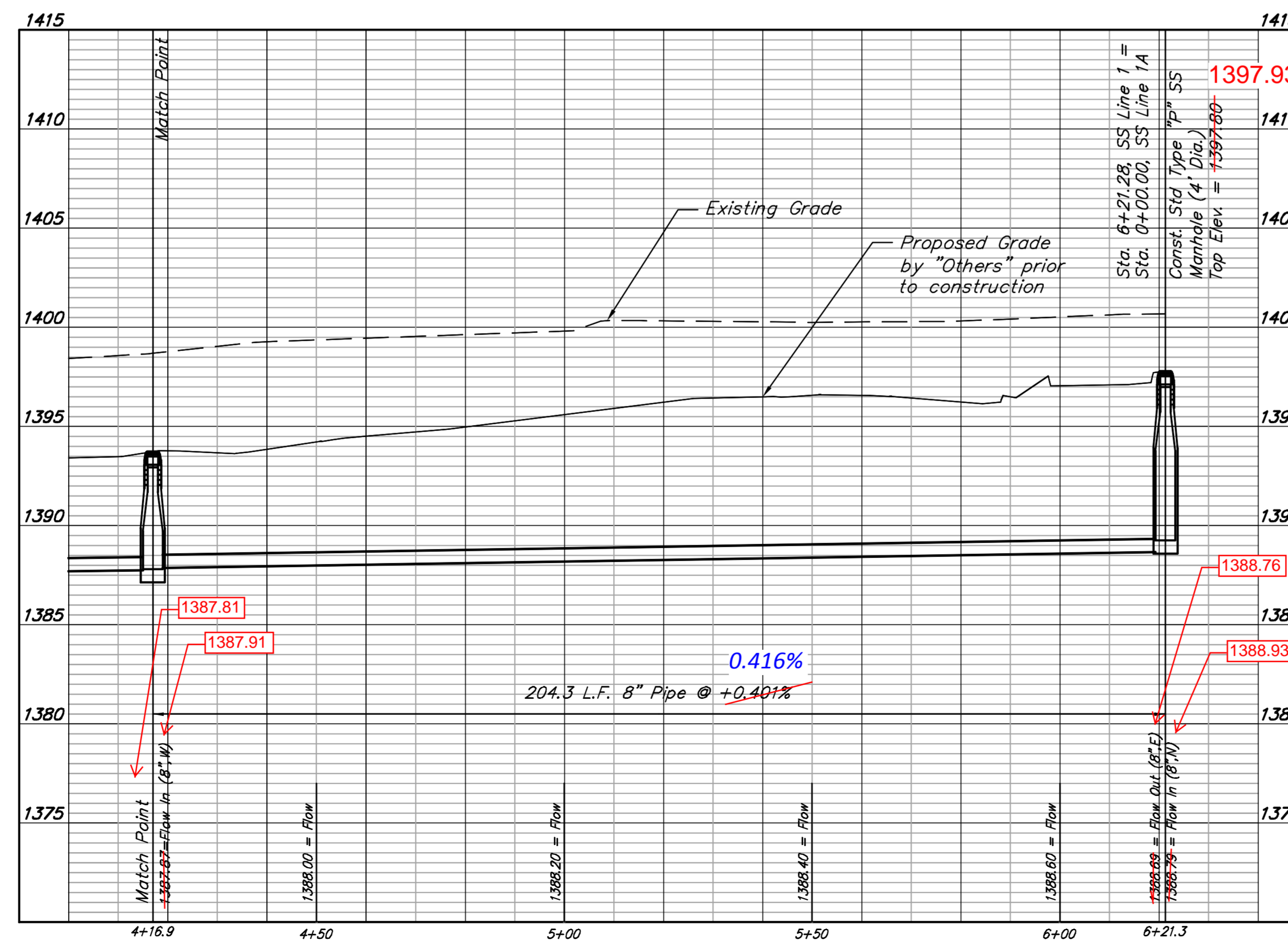
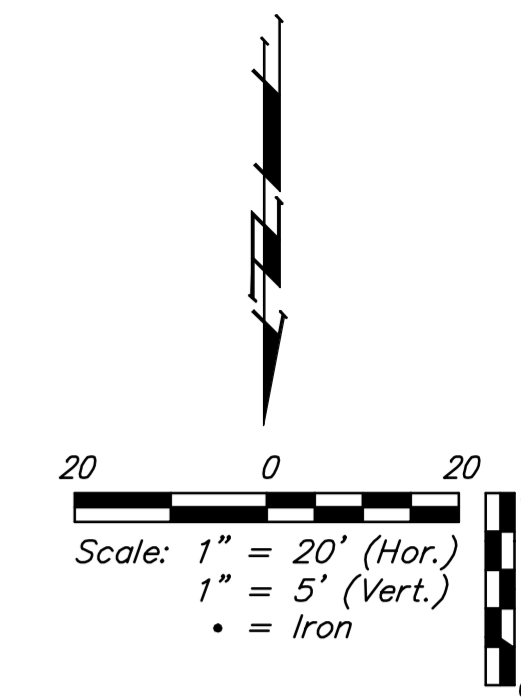
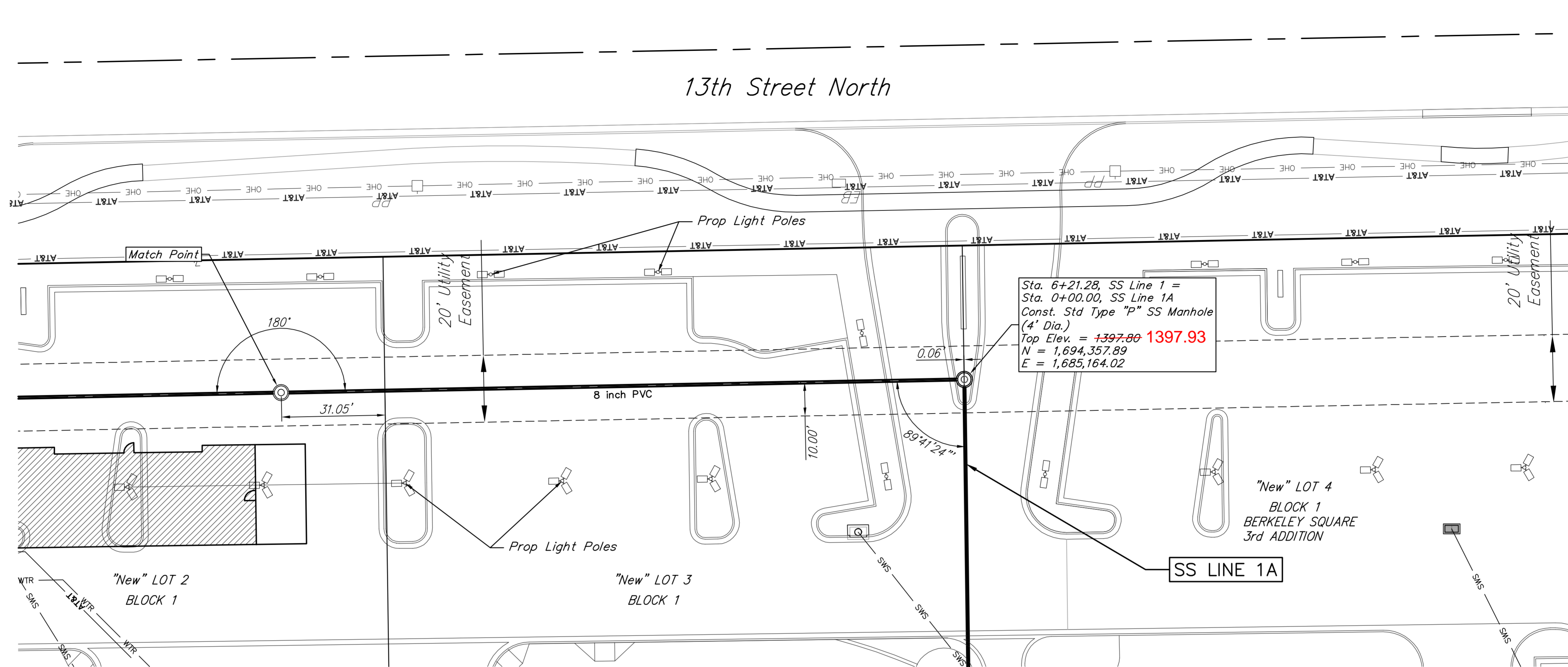
SITE BENCHMARK-2
"V" notch in west edge of sidewalk, NE corner of Lot 4, Block 1, Berkeley Square Addition. Elevation=1375.60 (NAVD 88)



Berkeley Square 3rd Addition
LINE 1
Sanitary Sewer Improvements

Baughman Company, P.A.
315 E. 15th St., Wichita, KS 67211, P: 316.262.2771, F: 316.262.0149
ENGINEERING | SURVEYING | PLANNING | LANDSCAPE ARCHITECTURE
DRAFTING | DESIGN-BUILD | ENVIRONMENTAL | APPROVED FOR
12/28/15
1/18/15

REVISED: _____
SHEET **4** OF **7**



AS BUILTS

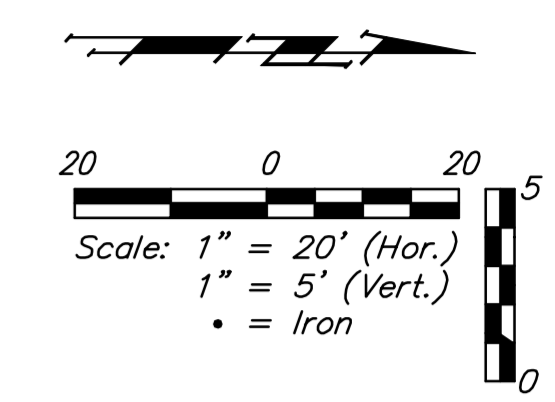
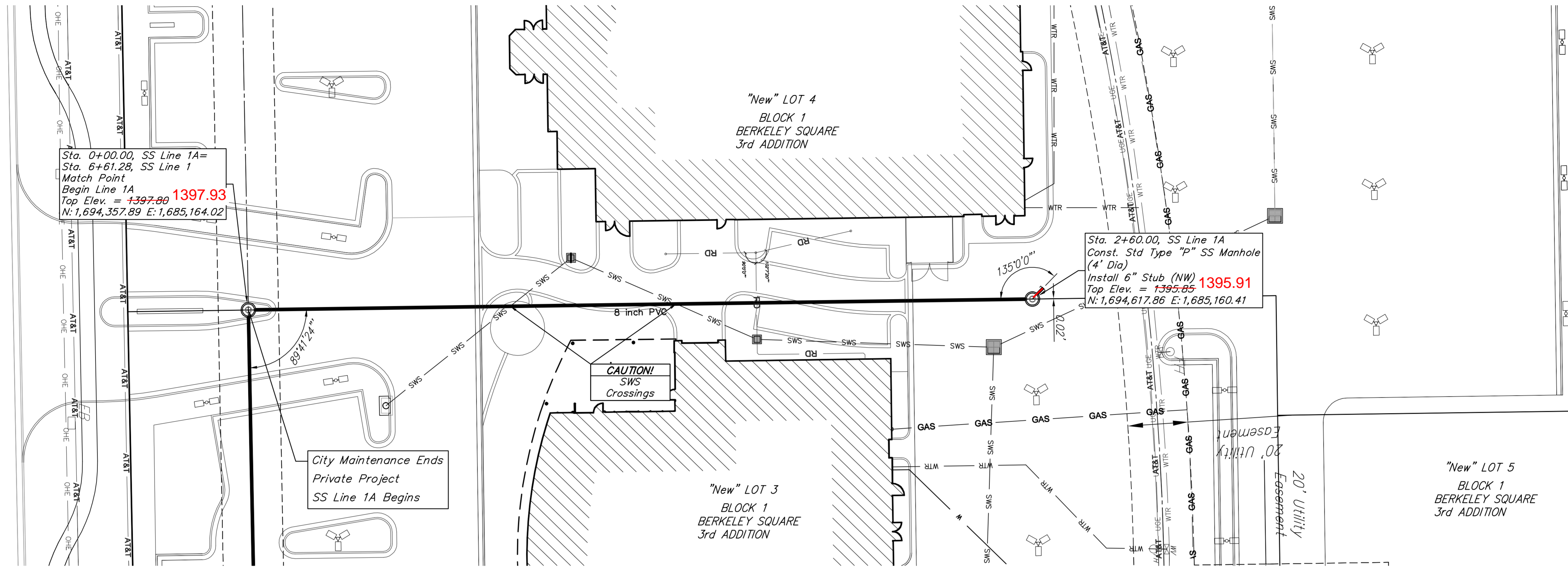
Contractor: Ewartz Excavation	Project Inspector: Matt Perez
10/28/2015	KEMILLER ENGINEERING PA <small>117 E. Lewis, Wichita, KS 67202 (316)264-0242</small>

BENCHMARKS

SITE BENCHMARK-1
Square cut in west edge of catch basin.
Basin on west curb line of Greenwich Road,
East of Jaguar/Land Rover Dealership.
Elevation=1381.56 (NAVD 88)

SITE BENCHMARK-2
"V" notch in west edge of sidewalk, NE corner
of Lot 4, Block 1, Berkeley Square Addition.
Elevation=1375.60 (NAVD 88)





Sta. 0+00.00, SS Line 1A=
Sta. 6+61.28, SS Line 1
Match Point
Begin Line 1A
Top Elev. = ~~1397.80~~ **1397.93**
N: 1,694,357.89 E: 1,685,164.02

Sta. 2+60.00, SS Line 1A
Const. Std Type "p" SS Manhole
(4' Dia)
Install 6" Stub (NW) **1395.91**
Top Elev. = ~~1395.85~~
N: 1,694,617.86 E: 1,685,160.41

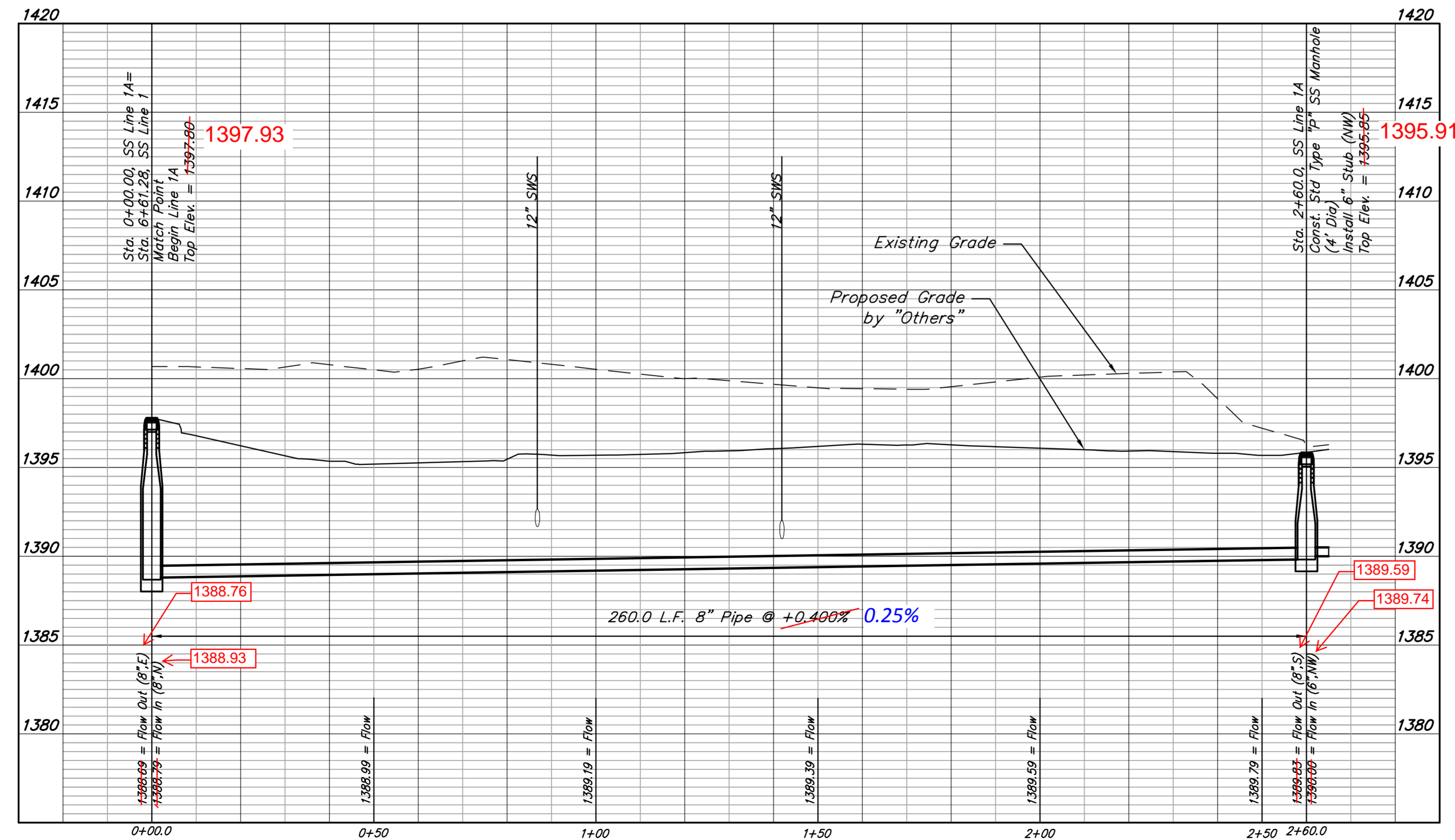
City Maintenance Ends
Private Project
SS Line 1A Begins

CAUTION!
SWS
Crossings

BENCHMARKS

SITE BENCHMARK-1
Square cut in west edge of catch basin.
Basin on west curb line of Greenwich Road,
East of Jaguar/Land Rover Dealership.
Elevation=1381.56 (NAVD 88)

SITE BENCHMARK-2
"V" notch in west edge of sidewalk, NE corner
of Lot 4, Block 1, Berkeley Square Addition.
Elevation=1375.60 (NAVD 88)



AS BUILTS

Contractor: Ewartz Excavation 10/28/2015	Project Inspector: Matt Perez KEMILLER ENGINEERING PA 117 E. Lewis, Wichita, KS 67202 (316)264-0242
---	---



PC 248-1

CERTIFICATE OF SURVEY

I, James C. McClure, a registered land surveyor in Kansas, do hereby certify that I have been in responsible charge of surveying and platting of "BERKELEY SQUARE THIRD ADDITION"...

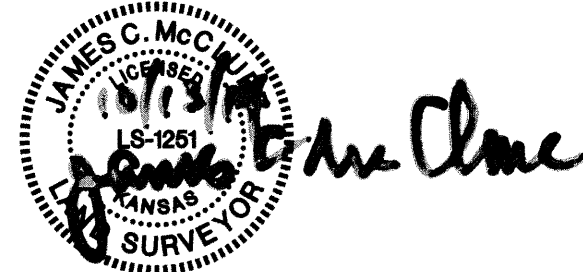
A replat of Lots 1 and 2, Block 1, and Lot 1, Block 2, Berkeley Square Second Addition, an addition to Wichita, Sedgwick County, Kansas, TOGETHER WITH, Lot 1, Block 1, Reserve A and B, and all of Berkeley Square Parkway, Berkeley Square First Addition, an addition to Wichita, Sedgwick County, Kansas.

CONTAINING: 675,612 square feet or 15.51 acres of land, more or less.

All streets, easements, rights-of-way, building setbacks, access controls, together with a utility easement recorded in/on Doc./Flm-Pg: 29225434, together with that part of a water line easement recorded in/on Doc./Flm-Pg: 29225433, together with all other public dedications within the above described property are hereby vacated and replatted by virtue of K.S.A. 12-512b, as amended.

I hereby certify that the details of this plat are correct to the best of my knowledge and belief this 13th day of October, 2014.

James C. McClure, LS #1251 MKEC Engineering, Inc. 411 North Webb Road Wichita, Kansas 67206



OWNER'S CERTIFICATE

Know all men by these presents that we the undersigned property owners of the land above set forth in the Registered Land Surveyor's Certificate, have caused the same to be surveyed and platted into Lots, a Block, and a Reserve, the same to be known as "BERKELEY SQUARE THIRD ADDITION," an addition to Wichita, Sedgwick County, Kansas.

Easements for construction and maintenance of public utilities and drainage, as indicated hereon, are hereby granted to and for the use of the public. The street, lighting, landscape, drainage and utility easement, as indicated hereon, is for the use of street, lighting, landscape, drainage and utility purposes and is granted to and for the use of the public for the purposes of accessing, constructing, maintaining, and repairing facilities over, along, and under the lots thereto.

All abutters rights of access to or from 13th Street over and across the south line of "BERKELEY SQUARE THIRD ADDITION," are hereby granted to the appropriate governing body, provided however three full movement openings as indicated hereon.

Reserve "A" is platted for landscaping, irrigation, berming, monuments, signs, and utilities confined by easement(s) or rights-of-way. The Reserve shall be owned and maintained by the owner(s) of Lots 1, 2, and 3, Block 1, and/or their successors, assigns, and/or a Lot Owner's Association.

A drainage plan has been developed for this plat. All drainage easements, rights-of-ways, or reserves shall remain at established grades or as modified with the approval of the applicable City or County Engineer, and unobstructed to allow for the conveyance of stormwater.

as to Lots 2 and 3, Block 1, and Reserve A APEX REALTY, LLC, a Kansas limited liability company

as to Lot 1, Block 1 NEXUS PROPERTIES, LLC, a Kansas limited liability company

Steven A. Hatchett, manager

Steven A. Hatchett, manager

STATE OF KANSAS, SEDGWICK COUNTY) ss:

This instrument was acknowledged before me on 13th day of October, 2014, by Steven A. Hatchett, manager of both, Apex Realty, LLC, a Kansas limited liability company and Nexus Properties, LLC, a Kansas limited liability company.

IN WITNESS WHEREOF, I have hereunto set my hand and affixed my official seal, the day and year last above written.

RHONDA K. HERTEL, Notary Public, My Term Expires 09/08/16

Rhonda K. Hertel, Notary Public, My Term Expires Sept 8, 2016

as to Lots 4, 5, and 6, Block 1

Thomas R. Devlin, Jr.

STATE OF KANSAS, SEDGWICK COUNTY) ss:

This instrument was acknowledged before me on 13th day of October, 2014, by Thomas R. Devlin, Jr.

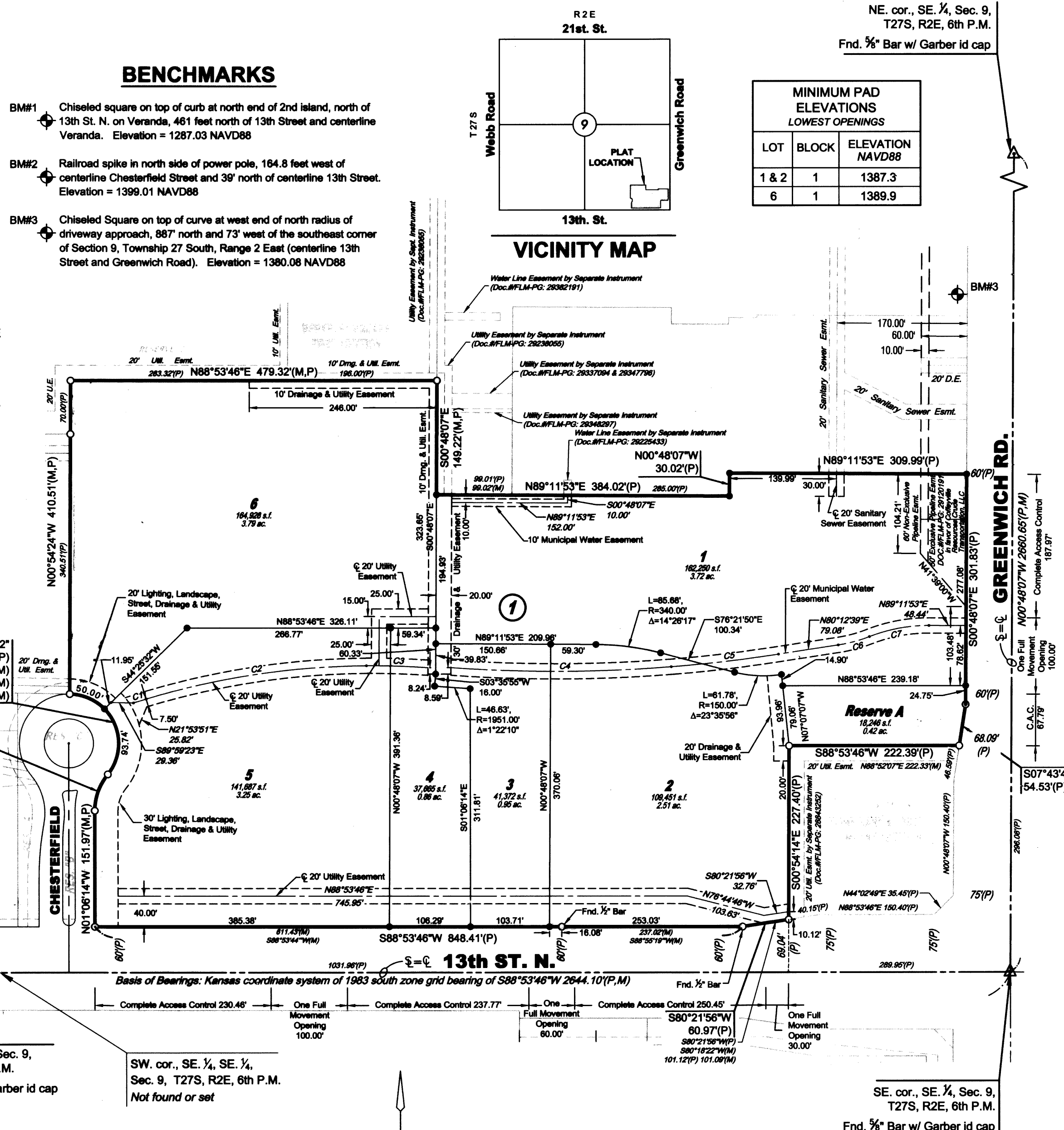
IN WITNESS WHEREOF, I have hereunto set my hand and affixed my official seal, the day and year last above written.

RHONDA K. HERTEL, Notary Public, My Term Expires 09/08/16

Rhonda K. Hertel, Notary Public, My Term Expires Sept 8, 2016

FINAL PLAT

BERKELEY SQUARE THIRD ADDITION AN ADDITION TO WICHITA, SEDGWICK COUNTY, KANSAS



BENCHMARKS

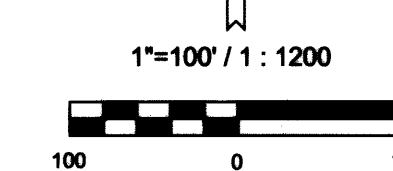
- BMF1 Chiseled square on top of curb at north end of 2nd island, north of 13th St. N. on Veranda, 461 feet north of 13th Street and centerline Veranda. Elevation = 1267.03 NAVD88

VICINITY MAP

Table with 3 columns: LOT, BLOCK, ELEVATION NAVD88. Rows: 1 & 2, 1, 1387.3; 6, 1, 1389.9

LEGEND

- Section corner monument found
Found 3/4" rebar w/ MKEC CLS 39 id. cap unless otherwise annotated
Set 3/4" rebar w/ MKEC CLS 39 id. cap
Benchmark
Measured
Calculated from measured
Platted
Complete Access Control



Basis of Bearings: Kansas coordinate system of 1983 south zone grid bearing of S88°53'46"W along the S. line of the SE 1/4, Sec. 9, T27S, R2E, 6th P.M.

This plat is surveyed and platted on NAD83 using Kansas state plane south zone coordinates, modified to the surface, having a combined adjustment scale factor of 1.000120014401728

EASEMENT CURVE TABLE with columns: Curve #, Length, Radius, Delta, Chord Direction, Chord Length. Rows C1 through C7.

PLANNING COMMISSION CERTIFICATE

STATE OF KANSAS, SEDGWICK COUNTY) ss:

This plat of "BERKELEY SQUARE THIRD ADDITION" has been submitted to and approved by the Wichita-Sedgwick County Metropolitan Area Planning Commission, Wichita, Kansas.

Dated this 21st day of August, 2014.

WICHITA-SEDGWICK COUNTY METROPOLITAN AREA PLANNING COMMISSION

Matthew L. Golsby, Chair

John L. Schlegel, Secretary



GOVERNING BODY CERTIFICATE

STATE OF KANSAS, SEDGWICK COUNTY) ss:

The dedications shown on this plat are hereby accepted and this plat is hereby approved by the governing body of the City of Wichita, Kansas.

Dated this 28 day of October, 2014.

At the direction of the City Council.

Carl Brewer, Mayor

Karen Sublett, City Clerk

TRANSFER RECORD

STATE OF KANSAS, SEDGWICK COUNTY) ss:

Entered on transfer record this 19th day of November, 2014.

Kelly B. Arnold, County Clerk



REGISTER OF DEEDS' CERTIFICATE

STATE OF KANSAS, SEDGWICK COUNTY) ss:

This is to certify that this instrument was filed for record in the Register of Deeds office this day of November 19, 2014, at 10:48:49 o'clock A.M. and is duly recorded.

Bill Meek, Register of Deeds

Tonya E. Buckingham, Deputy

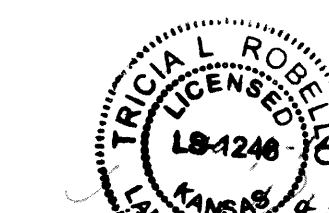


COUNTY SURVEYOR

STATE OF KANSAS, SEDGWICK COUNTY) ss:

Reviewed in accordance with K.S.A. 58-2005 on this 14 day of October, 2014.

Tricia L. Robb, Deputy County Surveyor



PC 248-1

Baughman Company, P.A. Surveyors and Engineers

Berkeley Square 3rd Addition Copy of Plat Sanitary Sewer Improvements

7 of 7