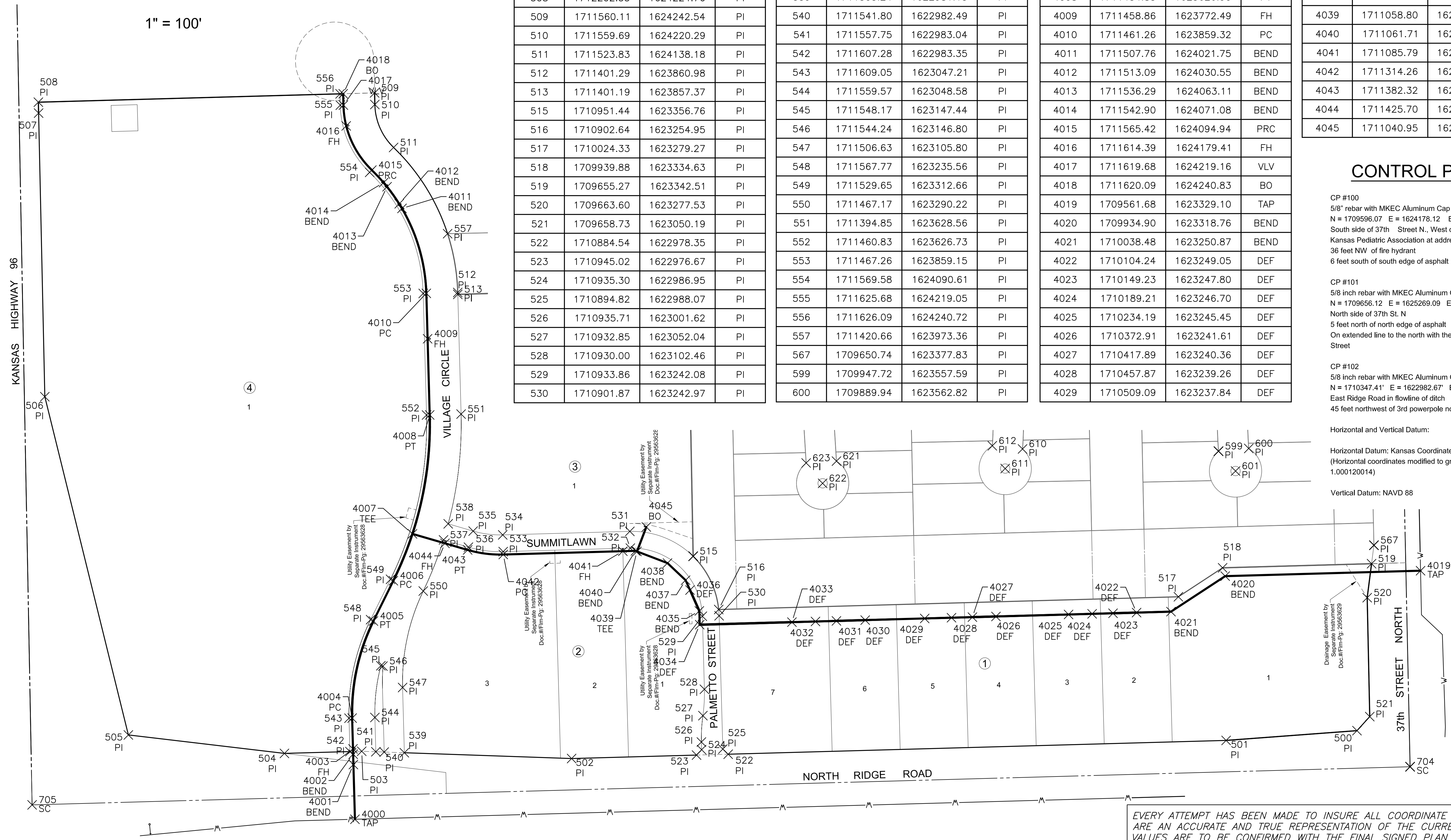
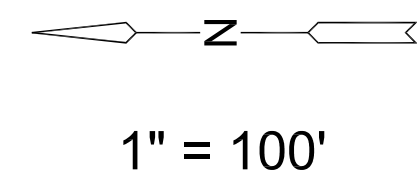
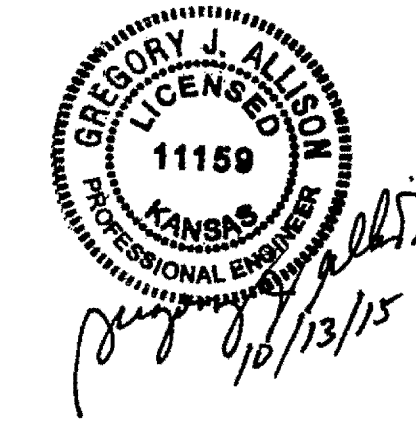


PL0120: Wednesday, October 14, 2015 @ 09:57AM

J:\PROJECTS\2014\1401010482_PREMER_ESTANCIA\GIS\CIVIL\DWG\COMMERCIAL\1402_COM_BUBBLE.DWG



PLAT POINTS			
Point #	Northing	Easting	Desc.
500	1709683.12	1623023.34	PI
501	1709933.18	1623004.69	PI
502	1711183.70	1622970.07	PI
503	1711584.69	1622983.97	PI
504	1711732.38	1622979.88	PI
505	1712030.60	1623015.17	PI
506	1712190.24	1623661.75	PI
507	1712202.08	1624203.86	PI
508	1712202.55	1624224.76	PI
509	1711560.11	1624242.54	PI
510	1711559.69	1624220.29	PI
511	1711523.83	1624138.18	PI
512	1711401.29	1623860.98	PI
513	1711401.19	1623857.37	PI
515	1710951.44	1623356.76	PI
516	1710902.64	1623254.95	PI
517	1710024.33	1623279.27	PI
518	1709939.88	1623334.63	PI
519	1709655.27	1623342.51	PI
520	1709663.60	1623277.53	PI
521	1709658.73	1623050.19	PI
522	1710884.54	1622978.35	PI
523	1710945.02	1622976.67	PI
524	1710935.30	1622986.95	PI
525	1710894.82	1622988.07	PI
526	1710935.71	1623001.62	PI
527	1710932.85	1623052.04	PI
528	1710930.00	1623102.46	PI
529	1710933.86	1623242.08	PI
530	1710901.87	1623242.97	PI

PLAT POINTS			
Point #	Northing	Easting	Desc.
531	1711072.41	1623404.31	PI
532	1711071.52	1623372.32	PI
533	1711314.41	1623365.60	PI
534	1711315.30	1623397.59	PI
535	1711371.84	1623404.85	PI
536	1711380.78	1623374.13	PI
537	1711428.45	1623388.01	PI
538	1711419.50	1623418.74	PI
539	1711503.24	1622981.15	PI
540	1711541.80	1622982.49	PI
541	1711557.75	1622983.04	PI
542	1711607.28	1622983.35	PI
543	1711609.05	1623047.21	PI
544	1711559.57	1623048.58	PI
545	1711548.17	1623147.44	PI
546	1711544.24	1623146.80	PI
547	1711506.63	1623105.80	PI
548	1711567.77	1623235.56	PI
549	1711529.65	1623312.66	PI
550	1711467.17	1623290.22	PI
551	1711394.85	1623628.56	PI
552	1711460.83	1623626.73	PI
553	1711467.26	1623859.15	PI
554	1711569.58	1624090.61	PI
555	1711625.68	1624219.05	PI
556	1711626.09	1624240.72	PI
557	1711420.66	1623973.36	PI
567	1709650.74	1623377.83	PI
599	1709947.72	1623557.59	PI
600	1709889.94	1623562.82	PI

WATER POINTS			
Point #	Northing	Easting	Desc.
4000	1711597.70	1622854.00	TAP
4001	1711600.59	1622958.52	BEND
4002	1711601.07	1622978.29	BEND
4003	1711601.42	1622988.51	FH
4004	1711603.05	1623047.38	PC
4005	1711562.40	1623232.90	PT
4006	1711524.28	1623310.00	PC
4007	1711487.75	1623399.55	TEE
4008	1711454.83	1623626.90	PT
4009	1711458.86	1623772.49	FH
4010	1711461.26	1623859.32	PC
4011	1711507.76	1624021.75	BEND
4012	1711513.09	1624030.55	BEND
4013	1711536.29	1624063.11	BEND
4014	1711542.90	1624071.08	BEND
4015	1711565.42	1624094.94	PRC
4016	1711614.39	1624179.41	FH
4017	1711619.68	1624219.16	VLV
4018	1711620.09	1624240.83	BO
4019	1709561.68	1623329.10	TAP
4020	1709934.90	1623318.76	BEND
4021	1710038.48	1623250.87	BEND
4022	1710104.24	1623249.05	DEF
4023	1710149.23	1623247.80	DEF
4024	1710189.21	1623246.70	DEF
4025	1710234.19	1623245.45	DEF
4026	1710372.91	1623241.61	DEF
4027	1710417.89	1623240.36	DEF
4028	1710457.87	1623239.26	DEF
4029	1710509.09	1623237.84	DEF

WATER POINTS			
Point #	Northing	Easting	Desc.
4030	1710622.77	1623234.69	DEF
4031	1710677.75	1623233.17	DEF
4032	1710717.73	1623232.06	DEF
4033	1710762.72	1623230.82	DEF
4034	1710938.92	1623225.94	DEF
4035	1710939.65	1623252.23	BEND
4036	1710957.48	1623292.13	DEF
4037	1710965.91	1623310.98	BEND
4038	1711000.50	1623343.70	BEND
4039	1711058.80	1623365.98	TEE
4040	1711061.71	1623367.09	BEND
4041	1711085.79	1623366.42	FH
4042	1711314.26	1623360.10	PC
4043	1711382.32	1623368.85	PT
4044	1711425.70	1623381.48	FH
4045	1711040.95	1623412.69	BO

CONTROL POINTS

CP #100
 5/8" rebar with MKEC Aluminum Cap
 N = 1709596.07 E = 1624178.12 Elev. = 1334.38
 South side of 37th Street N., West of entrance drive to Mid Kansas Pediatric Association at address 6837 W 37th St N.
 36 feet NW of fire hydrant
 6 feet south of south edge of asphalt

CP #101
 5/8 inch rebar with MKEC Aluminum Cap
 N = 1709656.12 E = 1625269.09 Elev. = 1331.35"
 North side of 37th St. N
 5 feet north of north edge of asphalt
 On extended line to the north with the centerline of Ridgeport Street

CP #102
 5/8 inch rebar with MKEC Aluminum Cap
 N = 1710347.41 E = 1622982.67 Elev. = 1330.50
 East Ridge Road in flowline of ditch
 45 feet northwest of 3rd powerpole north of 37th Street N

Horizontal and Vertical Datum:
 Horizontal Datum: Kansas Coordinate System 1983 South Zone.
 (Horizontal coordinates modified to ground using a scale factor of 1.000120014)
 Vertical Datum: NAVD 88



PRIVATE WATER DISTRIBUTION PLANS FOR ESTANCIA COMMERCIAL ADDITION PHASE 1

©2015 MKEC Engineering All Rights Reserved www.mkec.com
 These drawings and their contents, including, but not limited to, all concepts, designs, & ideas are the exclusive property of MKEC Engineering (MKEC), and may not be used or reproduced in any way without the express consent of MKEC.

BUBBLE MAP

PROJECT NO.	448-90692	
DATE	OCT. 2015	
SCALE	1" = 100'	
DESIGNED	DRAWN	CHECKED
DFL	JWC	GJA
NO.	REVISION	DATE

SHEET NO.
 7 OF 13

EVERY ATTEMPT HAS BEEN MADE TO INSURE ALL COORDINATE VALUES SHOWN ARE AN ACCURATE AND TRUE REPRESENTATION OF THE CURRENT PLANS. ALL VALUES ARE TO BE CONFIRMED WITH THE FINAL SIGNED PLAN SET BEFORE USE.