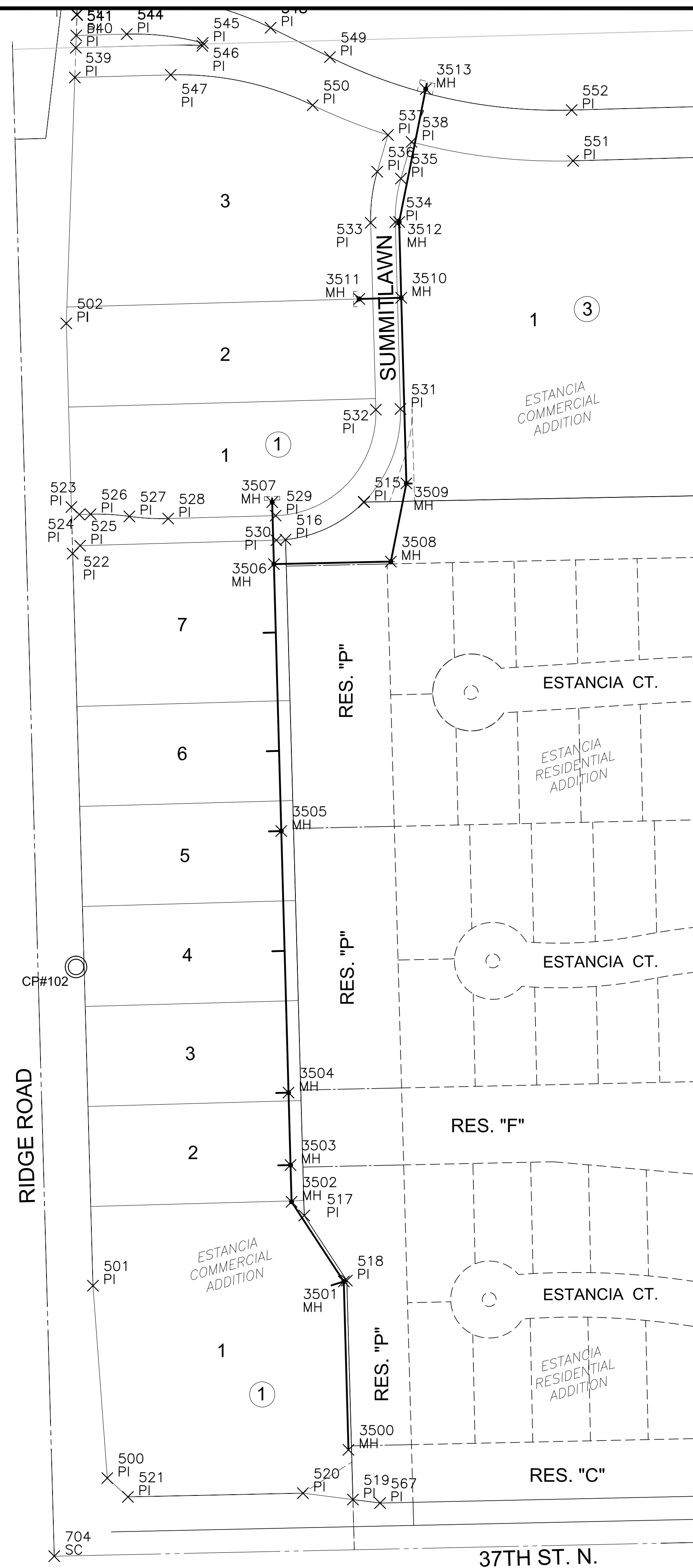


PUNTED: Wednesday, October 14, 2015 @ 10:35AM

J:\PROJECTS\2011\101010482\_PREMIER\_ESTANCIA\05-CIVIL\CADD\SANCOMMERCIAL\1482-BB\01-C.DWG



| PLAT POINTS |            |            |       |
|-------------|------------|------------|-------|
| Point #     | Northing   | Easting    | Desc. |
| 500         | 1709683.12 | 1623023.34 | PI    |
| 501         | 1709933.18 | 1623004.69 | PI    |
| 502         | 1711183.70 | 1622970.07 | PI    |
| 503         | 1711584.69 | 1622983.97 | PI    |
| 504         | 1711732.38 | 1622979.88 | PI    |
| 505         | 1712030.60 | 1623015.17 | PI    |
| 506         | 1712190.24 | 1623661.75 | PI    |
| 507         | 1712202.08 | 1624203.86 | PI    |
| 508         | 1712202.55 | 1624224.76 | PI    |
| 509         | 1711560.11 | 1624242.54 | PI    |
| 510         | 1711559.69 | 1624220.29 | PI    |
| 511         | 1711523.83 | 1624138.18 | PI    |
| 512         | 1711401.29 | 1623860.98 | PI    |
| 513         | 1711401.19 | 1623857.37 | PI    |
| 515         | 1710951.44 | 1623356.76 | PI    |
| 516         | 1710902.64 | 1623254.95 | PI    |
| 517         | 1710024.33 | 1623279.27 | PI    |
| 518         | 1709939.88 | 1623334.63 | PI    |
| 519         | 1709655.27 | 1623342.51 | PI    |
| 520         | 1709663.60 | 1623277.53 | PI    |
| 521         | 1709658.73 | 1623050.19 | PI    |
| 522         | 1710884.54 | 1622978.35 | PI    |
| 523         | 1710945.02 | 1622976.67 | PI    |
| 524         | 1710935.30 | 1622986.95 | PI    |
| 525         | 1710894.82 | 1622988.07 | PI    |
| 526         | 1710935.71 | 1623001.62 | PI    |
| 527         | 1710932.85 | 1623052.04 | PI    |
| 528         | 1710930.00 | 1623102.46 | PI    |
| 529         | 1710933.86 | 1623242.08 | PI    |
| 530         | 1710901.87 | 1623242.97 | PI    |
| 531         | 1711072.41 | 1623404.31 | PI    |

| PLAT POINTS |            |            |       |
|-------------|------------|------------|-------|
| Point #     | Northing   | Easting    | Desc. |
| 532         | 1711071.52 | 1623372.32 | PI    |
| 533         | 1711314.41 | 1623365.60 | PI    |
| 534         | 1711315.30 | 1623397.59 | PI    |
| 535         | 1711371.84 | 1623404.85 | PI    |
| 536         | 1711380.78 | 1623374.13 | PI    |
| 537         | 1711428.45 | 1623388.01 | PI    |
| 538         | 1711419.50 | 1623418.74 | PI    |
| 539         | 1711503.24 | 1622981.15 | PI    |
| 540         | 1711541.80 | 1622982.49 | PI    |
| 541         | 1711557.75 | 1622983.04 | PI    |
| 542         | 1711607.28 | 1622983.35 | PI    |
| 543         | 1711609.05 | 1623047.21 | PI    |
| 544         | 1711559.57 | 1623048.58 | PI    |
| 545         | 1711548.17 | 1623147.44 | PI    |
| 546         | 1711544.24 | 1623146.80 | PI    |
| 547         | 1711506.63 | 1623105.80 | PI    |
| 548         | 1711567.77 | 1623235.56 | PI    |
| 549         | 1711529.65 | 1623312.66 | PI    |
| 550         | 1711467.17 | 1623290.22 | PI    |
| 551         | 1711394.85 | 1623628.56 | PI    |
| 552         | 1711460.83 | 1623626.73 | PI    |
| 553         | 1711467.26 | 1623859.15 | PI    |
| 554         | 1711569.58 | 1624090.61 | PI    |
| 555         | 1711625.68 | 1624219.05 | PI    |
| 556         | 1711626.09 | 1624240.72 | PI    |
| 557         | 1711420.66 | 1623973.36 | PI    |
| 567         | 1709650.74 | 1623377.83 | PI    |
| 704         | 1709581.66 | 1622954.40 | SC    |
| 705         | 1712214.54 | 1622881.50 | SC    |
| 706         | 1712264.39 | 1625524.30 | SC    |

| SANITARY POINTS |            |            |       |
|-----------------|------------|------------|-------|
| Point #         | Northing   | Easting    | Desc. |
| 3500            | 1709719.88 | 1623336.72 | MH    |
| 3501            | 1709938.63 | 1623330.66 | MH    |
| 3502            | 1710042.21 | 1623262.77 | MH    |
| 3503            | 1710089.97 | 1623261.45 | MH    |
| 3504            | 1710184.04 | 1623258.84 | MH    |
| 3505            | 1710523.95 | 1623249.43 | MH    |
| 3506            | 1710870.85 | 1623239.83 | MH    |
| 3507            | 1710951.24 | 1623237.60 | MH    |
| 3508            | 1710874.11 | 1623391.80 | MH    |
| 3509            | 1710975.73 | 1623411.99 | MH    |
| 3510            | 1711216.92 | 1623405.31 | MH    |
| 3511            | 1711215.41 | 1623350.83 | MH    |
| 3512            | 1711315.43 | 1623402.58 | MH    |
| 3513            | 1711488.08 | 1623437.10 | MH    |

### CONTROL POINTS

CP #100  
 5/8" rebar with MKEC Aluminum Cap  
 N = 1709596.07 E = 1624178.12 Elev. = 1334.38  
 South side of 37th Street N., West of entrance drive to Mid  
 Kansas Pediatric Association at address 6837 W 37th St. N.  
 36 feet NW of fire hydrant  
 6 feet south of south edge of asphalt

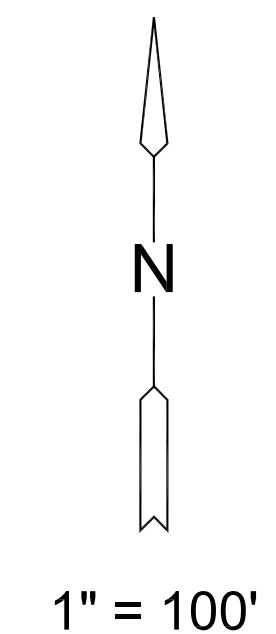
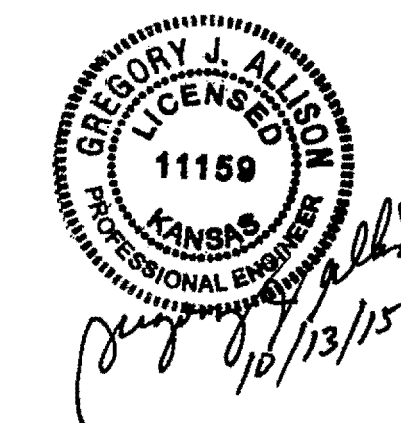
CP #101  
 5/8 inch rebar with MKEC Aluminum Cap  
 N = 1709656.12 E = 1625269.09 Elev. = 1331.35'  
 North side of 37th St. N  
 5 feet north of north edge of asphalt  
 On extended line to the north with the centerline of Ridgeport  
 Street

CP #102  
 5/8 inch rebar with MKEC Aluminum Cap  
 N = 1710347.41' E = 1622982.67' Elev. = 1330.50  
 East Ridge Road in flowline of ditch  
 45 feet northwest of 3rd powerpole north of 37th Street N

Horizontal and Vertical Datum:

Horizontal Datum: Kansas Coordinate System 1983 South Zone.  
 (Horizontal coordinates modified to ground using a scale factor of  
 1.000120014)

Vertical Datum: NAVD 88



EVERY ATTEMPT HAS BEEN MADE TO INSURE ALL COORDINATE VALUES SHOWN ARE AN ACCURATE AND TRUE REPRESENTATION OF THE CURRENT PLANS. ALL VALUES ARE TO BE CONFIRMED WITH THE FINAL SIGNED PLAN SET BEFORE USE.



SANITARY SEWER PLANS FOR  
**ESTANCIA COMMERCIAL ADDITION**  
 COMMERCIAL PHASE 1

©2015  
 MKEC Engineering  
 All Rights Reserved  
 www.mkec.com  
 These drawings and their contents, including, but not limited to, all concepts, designs, & ideas are the exclusive property of MKEC Engineering (MKEC), and may not be used or reproduced in any way without the express consent of MKEC.

### BUBBLE MAP

|             |           |         |
|-------------|-----------|---------|
| PROJECT NO. | 468-85069 |         |
| DATE        | OCT. 2015 |         |
| SCALE       | 1" = 100' |         |
| DESIGNED    | DRAWN     | CHECKED |
| DFL         | TKL       | GLA     |
| NO.         | REVISION  | DATE    |

SHEET NO.