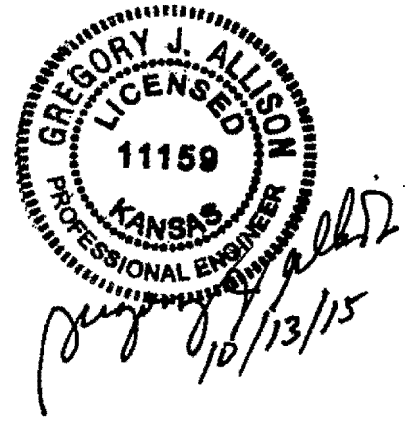


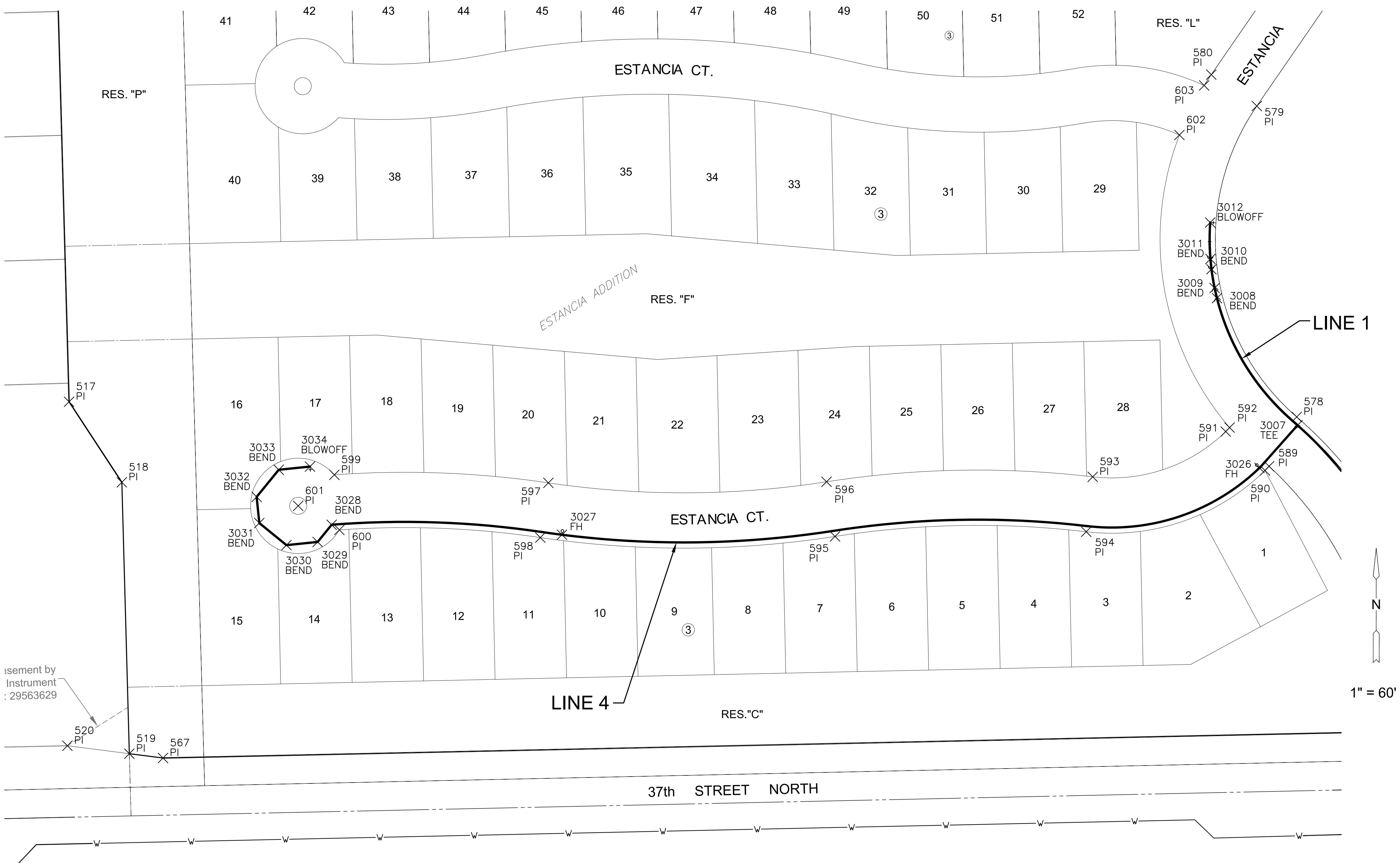
J:\PROJECTS\2014\14010482_PREMER_ESTANCIA\5-CIVIL\DWG\RESIDENTIAL\1482_RES_CB-01.DWG
 PLOTTED: Wednesday, October 14, 2015 @ 11:04AM



WATER POINTS			
Point #	Northing	Easting	Desc.
3007	1709999.72	1624568.08	TEE
3008	1710133.00	1624483.51	BEND
3009	1710143.59	1624481.08	BEND
3010	1710163.31	1624477.80	BEND
3011	1710174.12	1624476.67	BEND
3012	1710212.31	1624476.43	BLOWOFF
3026	1709954.97	1624528.13	FH
3027	1709884.85	1623796.35	FH

WATER POINTS			
Point #	Northing	Easting	Desc.
3028	1709895.36	1623554.76	BEND
3029	1709877.31	1623540.05	BEND
3030	1709873.96	1623507.31	BEND
3031	1709897.13	1623478.86	BEND
3032	1709924.56	1623476.06	BEND
3033	1709953.00	1623499.24	BEND
3034	1709956.35	1623531.98	BLOWOFF

PAVING POINTS			
Point #	Northing	Easting	Desc.
500	1709683.12	1623023.34	PI
501	1709933.18	1623004.69	PI
517	1710024.33	1623279.27	PI
518	1709939.88	1623334.63	PI
519	1709655.27	1623342.51	PI
520	1709663.60	1623277.53	PI
521	1709658.73	1623050.19	PI
564	1709698.03	1625584.55	PI
567	1709650.74	1623377.83	PI
578	1710008.43	1624567.24	PI
579	1710334.47	1624525.33	PI
580	1710367.41	1624477.58	PI
589	1709956.66	1624538.19	PI
590	1709952.22	1624533.91	PI
591	1709993.08	1624492.73	PI
592	1709997.25	1624496.76	PI
593	1709945.59	1624353.19	PI
594	1709887.99	1624346.38	PI
595	1709883.10	1624082.85	PI
596	1709940.41	1624073.92	PI
597	1709939.28	1623782.13	PI
598	1709881.91	1623773.63	PI
599	1709947.72	1623557.59	PI
600	1709889.94	1623562.82	PI
601	1709915.15	1623519.64	PI
602	1710304.09	1624444.15	PI
603	1710356.01	1624470.09	PI
704	1709581.66	1622954.40	SC
705	1712214.54	1622881.50	SC
706	1712264.39	1625524.30	SC
707	1709638.05	1625585.96	SC



CONTROL POINTS

CP #100
 5/8" rebar with MKEC Aluminum Cap
 N = 1709596.07 E = 1624178.12 Elev. = 1334.38
 South side of 37th Street N., West of entrance drive to Mid Kansas Pediatric Association at address 6837 W 37th St. N.
 36 feet NW of fire hydrant
 6 feet south of south edge of asphalt

CP #101
 5/8 inch rebar with MKEC Aluminum Cap
 N = 1709656.12 E = 1625269.09 Elev. = 1331.35'
 North side of 37th St. N
 5 feet north of north edge of asphalt
 On extended line to the north with the centerline of Ridgeport Street

CP #102
 5/8 inch rebar with MKEC Aluminum Cap
 N = 1710347.41' E = 1622982.67' Elev. = 1330.50
 East Ridge Road in flowline of ditch
 45 feet northwest of 3rd powerpole north of 37th Street N

Horizontal and Vertical Datum:
 Horizontal Datum: Kansas Coordinate System 1983 South Zone.
 (Horizontal coordinates modified to ground using a scale factor of 1.000120014)
 Vertical Datum: NAVD 88

1" = 60'

EVERY ATTEMPT HAS BEEN MADE TO INSURE ALL COORDINATE VALUES SHOWN ARE AN ACCURATE AND TRUE REPRESENTATION OF THE CURRENT PLANS. ALL VALUES ARE TO BE CONFIRMED WITH THE FINAL SIGNED PLAN SET BEFORE USE.



PRIVATE WATER DISTRIBUTION PLANS FOR
ESTANCIA ADDITION
 PHASE 1

©2015
 MKEC Engineering
 All Rights Reserved
 www.mkec.com
 These drawings and their contents, including, but not limited to, all concepts, designs, & ideas are the exclusive property of MKEC Engineering (MKEC), and may not be used or reproduced in any way without the express consent of MKEC.

BUBBLE MAP 1 OF 2

PROJECT NO.	448-90693	
DATE	OCT. 2015	
SCALE	1" = 60'	
DESIGNED	DRAWN	CHECKED
DFL	JWC	GJA
NO.	REVISION	DATE