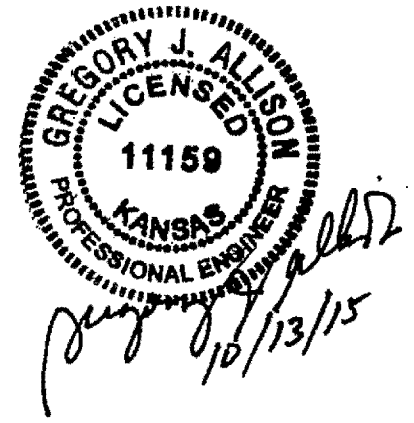
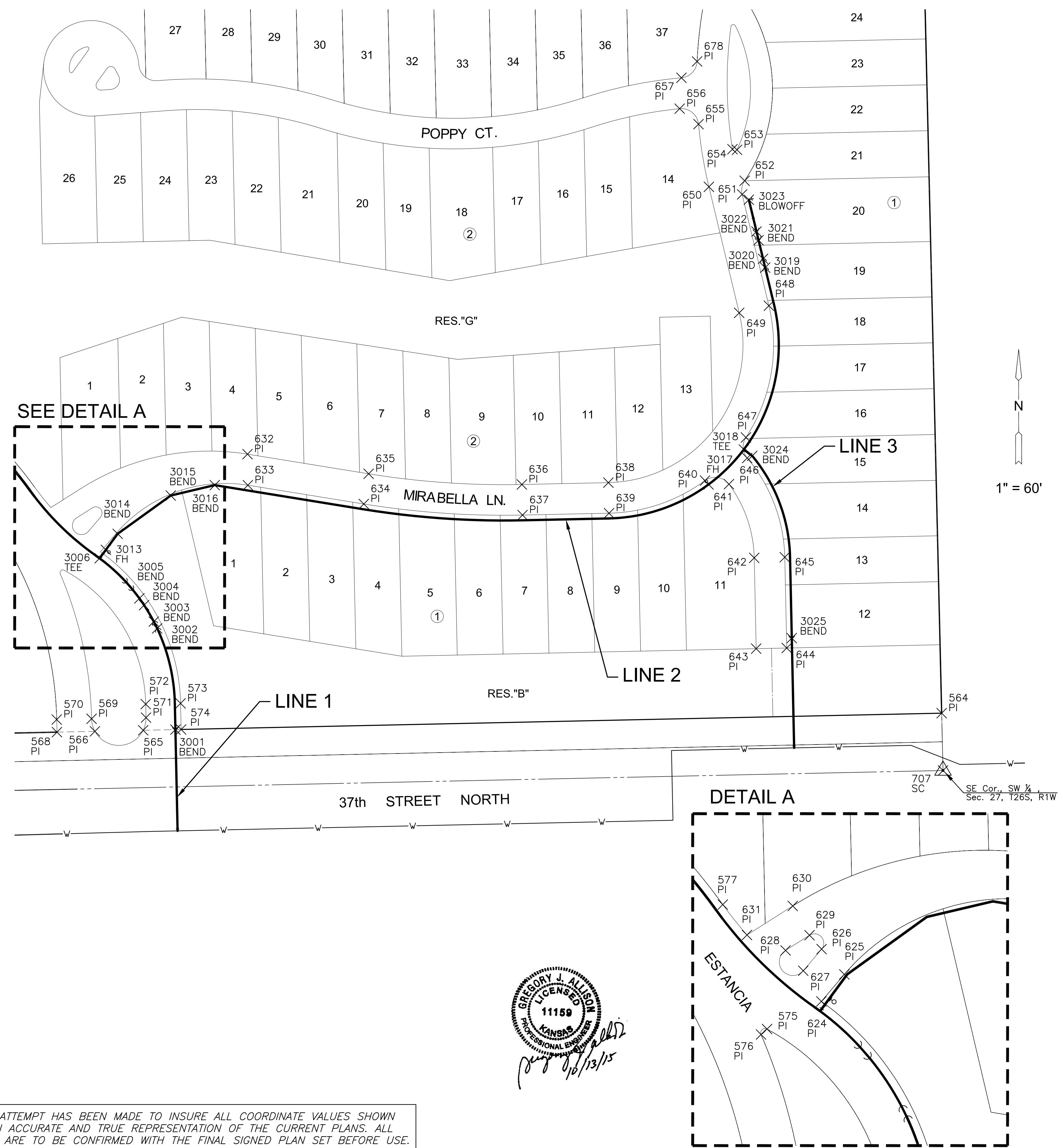


J:\PROJECTS\2014\14010482_PREMIER_ESTANCIA\AS-CIVIL\CAD\WTR\RESIDENTIAL\14482_RES_CB-02.DWG
 PLOTTED: Wednesday, October 14, 2015 @ 11:17AM



EVERY ATTEMPT HAS BEEN MADE TO INSURE ALL COORDINATE VALUES SHOWN
 ARE AN ACCURATE AND TRUE REPRESENTATION OF THE CURRENT PLANS. ALL
 VALUES ARE TO BE CONFIRMED WITH THE FINAL SIGNED PLAN SET BEFORE USE.

PAVING POINTS			
Point #	Northing	Easting	Desc.
500	1709683.12	1623023.34	PI
501	1709933.18	1623004.69	PI
519	1709655.27	1623342.51	PI
520	1709663.60	1623277.53	PI
521	1709658.73	1623050.19	PI
564	1709698.03	1625584.55	PI
565	1709680.12	1624748.65	PI
566	1709679.04	1624698.14	PI
567	1709650.74	1623377.83	PI
568	1709678.19	1624658.41	PI
569	1709692.16	1624694.62	PI
570	1709691.38	1624658.13	PI
571	1709693.38	1624751.61	PI
572	1709707.50	1624751.30	PI
573	1709708.28	1624787.80	PI
574	1709680.97	1624788.38	PI
575	1709847.58	1624666.04	PI
576	1709843.77	1624661.84	PI
577	1709934.41	1624635.14	PI
624	1709866.85	1624703.94	PI
625	1709885.68	1624719.95	PI
626	1709903.31	1624704.09	PI
627	1709888.24	1624691.28	PI
628	1709902.42	1624678.96	PI
629	1709913.01	1624695.66	PI
630	1709933.43	1624683.98	PI
631	1709913.18	1624652.04	PI
632	1709969.07	1624857.85	PI
633	1709936.59	1624858.23	PI
634	1709916.93	1624979.58	PI
635	1709948.51	1624984.70	PI
636	1709937.33	1625145.08	PI
637	1709905.33	1625145.77	PI
638	1709939.27	1625235.67	PI
639	1709907.28	1625236.35	PI
640	1709941.39	1625336.77	PI
641	1709937.62	1625361.87	PI
642	1709860.52	1625388.32	PI
643	1709765.54	1625390.36	PI
644	1709766.23	1625422.35	PI
645	1709861.21	1625420.31	PI
646	1709965.02	1625380.96	PI
647	1709986.55	1625379.64	PI
648	1710124.38	1625403.70	PI
649	1710116.90	1625372.59	PI
650	1710248.81	1625340.88	PI
651	1710240.86	1625375.70	PI
652	1710255.13	1625378.27	PI
653	1710287.51	1625370.30	PI
654	1710288.18	1625365.57	PI
655	1710314.35	1625329.99	PI
656	1710330.59	1625310.28	PI

PAVING POINTS			
Point #	Northing	Easting	Desc.
657	1710362.90	1625312.11	PI
678	1710379.97	1625328.49	PI
679	1710455.21	1625338.27	PI
680	1710449.83	1625375.81	PI
681	1710464.03	1625372.88	PI
704	1709581.66	1622954.40	SC
705	1712214.54	1622881.50	SC
706	1712264.39	1625524.30	SC
707	1709638.05	1625585.96	SC

WATER POINTS			
Point #	Northing	Easting	Desc.
3001	1709680.84	1624782.38	BEND
3002	1709786.74	1624763.31	BEND
3003	1709793.86	1624759.77	BEND
3004	1709811.07	1624749.61	BEND
3005	1709818.18	1624744.68	BEND
3006	1709860.09	1624703.04	TEE
3013	1709868.94	1624709.57	FH
3014	1709885.70	1624721.93	BEND
3015	1709925.76	1624777.49	BEND
3016	1709936.64	1624823.56	BEND
3017	1709937.34	1625340.55	FH
3018	1709973.90	1625377.46	TEE
3019	1710164.21	1625399.78	BEND
3020	1710173.48	1625397.56	BEND
3021	1710192.92	1625392.88	BEND
3022	1710202.01	1625390.70	BEND
3023	1710235.25	1625382.70	BLOWOFF
3024	1709967.28	1625386.24	BEND
3025	1709776.56	1625427.63	BEND

CONTROL POINTS

CP #100
 5/8" rebar with MKEC Aluminum Cap
 N = 1709596.07 E = 1624178.12 Elev. = 1334.38
 South side of 37th Street N., West of entrance drive to Mid
 Kansas Pediatric Association at address 6837 W 37th St N.
 36 feet NW of fire hydrant
 6 feet south of south edge of asphalt

CP #101
 5/8 inch rebar with MKEC Aluminum Cap
 N = 1709656.12 E = 1625269.09 Elev. = 1331.35'
 North side of 37th St. N
 5 feet north of north edge of asphalt
 On extended line to the north with the centerline of Ridgeport
 Street

CP #102
 5/8 inch rebar with MKEC Aluminum Cap
 N = 1710347.41' E = 1622982.67' Elev. = 1330.50
 East Ridge Road in flowline of ditch
 45 feet northwest of 3rd powerpole north of 37th Street N

Horizontal and Vertical Datum:
 Horizontal Datum: Kansas Coordinate System 1983 South Zone.
 (Horizontal coordinates modified to ground using a scale factor of
 1.000120014)
 Vertical Datum: NAVD 88



PRIVATE WATER DISTRIBUTION PLANS FOR
ESTANCIA ADDITION
 PHASE 1

©2015
 MKEC Engineering
 All Rights Reserved
 www.mkec.com
 These drawings and their contents,
 including, but not limited to, all concepts,
 designs, & ideas are the exclusive
 property of MKEC Engineering (MKEC),
 and may not be used or reproduced in any
 way without the express consent of MKEC.

BUBBLE MAP 2 OF 2

PROJECT NO.	448-90693	
DATE	OCT. 2015	
SCALE	1" = 60'	
DESIGNED	DRAWN	CHECKED
DFL	JWC	GJA
NO.	REVISION	DATE
SHEET NO.		
8 OF 15		