

J:\PROJECTS\2017\10010462_PREMIER_ESTANCIA\DWG\CAD\RESIDENTIAL\1462-85078.DWG
 PLOTTED: Wednesday, October 14, 2015 @ 10:29AM

PLAT POINTS			
Point #	Northing	Easting	Desc.
500	1709683.12	1623023.34	PI
501	1709933.18	1623004.69	PI
517	1710024.33	1623279.27	PI
518	1709939.88	1623334.63	PI
519	1709655.27	1623342.51	PI
520	1709663.60	1623277.53	PI
521	1709658.73	1623050.19	PI
564	1709698.03	1625584.55	PI
565	1709680.12	1624748.65	PI
566	1709679.04	1624698.14	PI
567	1709650.74	1623377.83	PI
568	1709678.19	1624658.41	PI
569	1709692.16	1624694.62	PI
570	1709691.38	1624658.13	PI
571	1709693.38	1624751.61	PI
572	1709707.50	1624751.30	PI
573	1709708.28	1624787.80	PI

PLAT POINTS			
Point #	Northing	Easting	Desc.
574	1709680.97	1624788.38	PI
575	1709847.58	1624666.04	PI
576	1709843.77	1624661.84	PI
577	1709934.41	1624635.14	PI
578	1710008.43	1624567.24	PI
589	1709956.66	1624538.19	PI
590	1709952.22	1624533.91	PI
591	1709993.08	1624492.73	PI
592	1709997.25	1624496.76	PI
593	1709945.59	1624353.19	PI
594	1709887.99	1624346.38	PI
595	1709883.10	1624082.85	PI
596	1709940.41	1624073.92	PI
597	1709939.28	1623782.13	PI
598	1709881.91	1623773.63	PI
599	1709947.72	1623557.59	PI
600	1709889.94	1623562.82	PI

PLAT POINTS			
Point #	Northing	Easting	Desc.
601	1709915.15	1623519.64	PI
624	1709866.85	1624703.94	PI
625	1709885.68	1624719.95	PI
626	1709903.31	1624704.09	PI
627	1709888.24	1624691.28	PI
628	1709902.42	1624678.96	PI
629	1709913.01	1624695.66	PI
630	1709933.43	1624683.98	PI
631	1709913.18	1624652.04	PI
632	1709969.07	1624857.85	PI
633	1709936.59	1624858.23	PI
634	1709916.93	1624979.58	PI
635	1709948.51	1624984.70	PI
636	1709937.33	1625145.08	PI
637	1709905.33	1625145.77	PI
638	1709939.27	1625235.67	PI
639	1709907.28	1625236.35	PI

PLAT POINTS			
Point #	Northing	Easting	Desc.
640	1709941.39	1625336.77	PI
641	1709937.62	1625361.87	PI
642	1709860.52	1625388.32	PI
643	1709765.54	1625390.36	PI
644	1709766.23	1625422.35	PI
645	1709861.21	1625420.31	PI
646	1709965.02	1625380.96	PI
647	1709986.55	1625379.64	PI
648	1710124.38	1625403.70	PI
649	1710116.90	1625372.59	PI
704	1709581.66	1622954.40	SC
707	1709638.05	1625585.96	SC

SANITARY POINTS			
Point #	Northing	Easting	Desc.
3000	1709672.63	1625565.96	MH
3001	1709773.92	1625547.76	MH
3002	1710041.84	1625541.47	MH
3003	1710193.80	1625537.90	MH
3004	1709770.01	1625365.26	MH
3005	1709754.59	1625019.23	MH
3006	1709787.26	1624817.70	MH
3007	1710188.61	1625295.81	MH
3008	1710078.20	1625279.00	MH
3009	1710063.22	1625077.96	MH
3010	1710107.24	1624789.57	MH
3011	1710063.26	1624656.66	MH
3012	1709721.77	1623424.93	MH
3013	1709729.85	1623802.02	MH
3014	1709737.99	1624182.04	MH
3015	1709743.89	1624457.37	MH
3016	1709832.54	1624621.48	MH
3017	1710097.27	1623602.35	MH
3018	1710071.63	1623896.71	MH
3019	1710085.25	1624103.70	MH
3020	1710092.21	1624428.69	MH
3021	1709551.99	1623341.37	MH
3022	1709719.88	1623336.72	MH
3023	1710191.06	1623586.50	MH
3024	1710529.31	1623499.23	MH

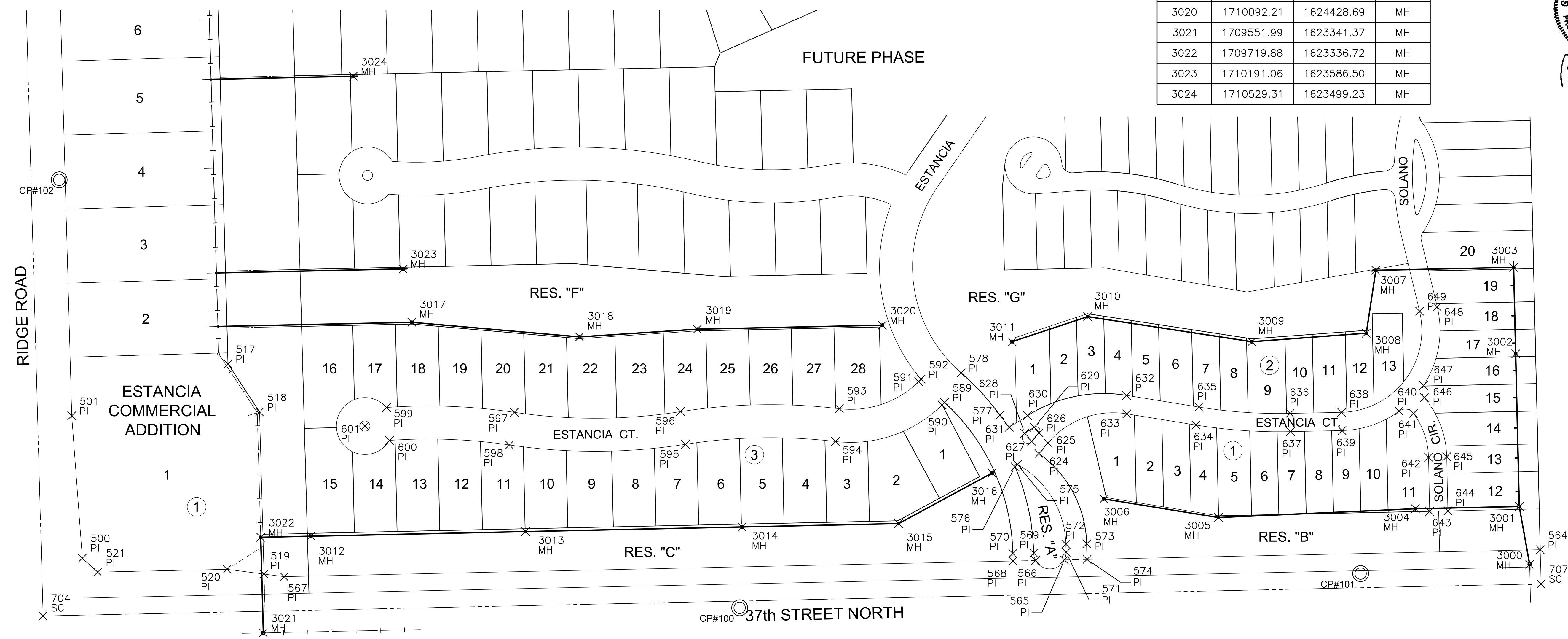
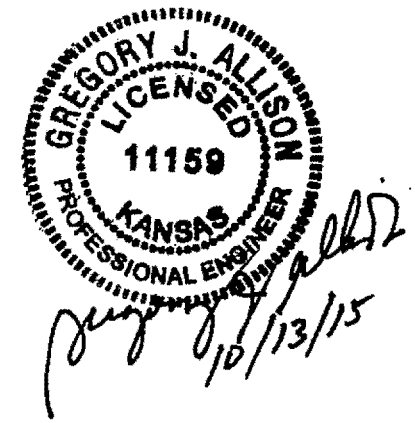
CONTROL POINTS

CP #100
 5/8" rebar with MKEC Aluminum Cap
 N = 1709596.07 E = 1624178.12 Elev. = 1334.38
 South side of 37th Street N., West of entrance drive to Mid Kansas Pediatric Association at address 6837 W 37th St N.
 36 feet NW of fire hydrant
 6 feet south of south edge of asphalt

CP #101
 5/8 inch rebar with MKEC Aluminum Cap
 N = 1709656.12 E = 1625269.09 Elev. = 1331.35'
 North side of 37th St. N
 5 feet north of north edge of asphalt
 On extended line to the north with the centerline of Ridgeport Street

CP #102
 5/8 inch rebar with MKEC Aluminum Cap
 N = 1710347.41' E = 1622982.67' Elev. = 1330.50
 East Ridge Road in flowline of ditch
 45 feet northwest of 3rd powerpole north of 37th Street N

Horizontal and Vertical Datum:
 Horizontal Datum: Kansas Coordinate System 1983 South Zone.
 (Horizontal coordinates modified to ground using a scale factor of 1.000120014)
 Vertical Datum: NAVD 88



SANITARY SEWER PLANS FOR
ESTANCIA ADDITION
 RESIDENTIAL PHASE 1

©2015
 MKEC Engineering
 All Rights Reserved
 www.mkec.com
 These drawings and their contents, including, but not limited to, all concepts, designs, & ideas are the exclusive property of MKEC Engineering (MKEC), and may not be used or reproduced in any way without the express consent of MKEC.

BUBBLE MAP

PROJECT NO.	468-85078	
DATE	OCT. 2015	
SCALE	1" = 100'	
DESIGNED	DRAWN	CHECKED
DFL	JWC	GJA
NO.	REVISION	DATE
SHEET NO.		

EVERY ATTEMPT HAS BEEN MADE TO INSURE ALL COORDINATE VALUES SHOWN ARE AN ACCURATE AND TRUE REPRESENTATION OF THE CURRENT PLANS. ALL VALUES ARE TO BE CONFIRMED WITH THE FINAL SIGNED PLAN SET BEFORE USE.