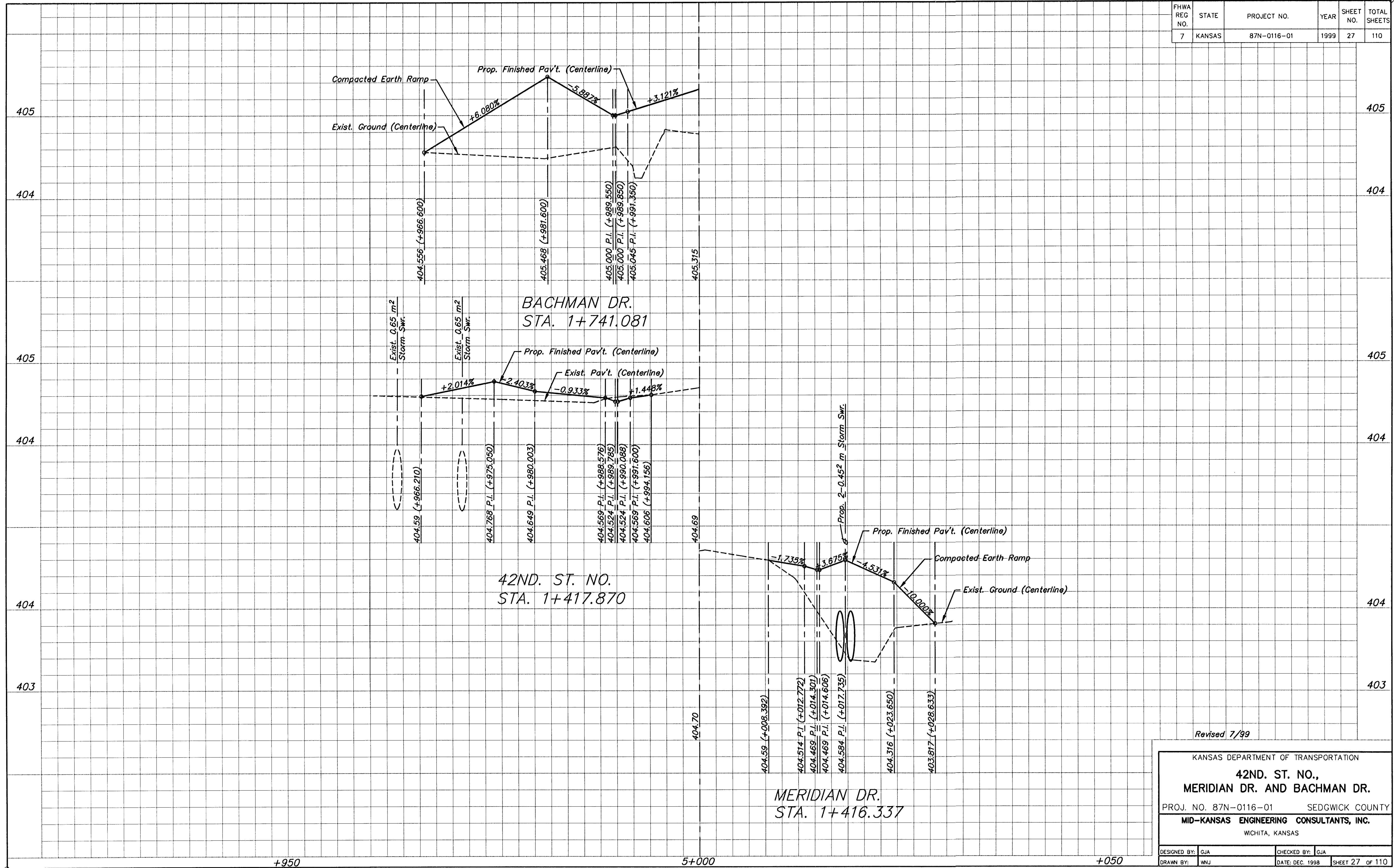


FHWA REG NO.	STATE	PROJECT NO.	YEAR	SHEET NO.	TOTAL SHEETS
7	KANSAS	87N-0116-01	1999	27	110



Revised 7/99

DESIGNED BY: GJA		CHECKED BY: GJA	
DRAWN BY: WNJ		DATE: DEC. 1998	
		SHEET 27 OF 110	

KANSAS DEPARTMENT OF TRANSPORTATION
**42ND. ST. NO.,
 MERIDIAN DR. AND BACHMAN DR.**
 PROJ. NO. 87N-0116-01 SEDGWICK COUNTY
MID-KANSAS ENGINEERING CONSULTANTS, INC.
 WICHITA, KANSAS

K:\CTV\197043\REVISION\PROF\7043PR13.DWG Fr: Aug 06 13:58:13 1999