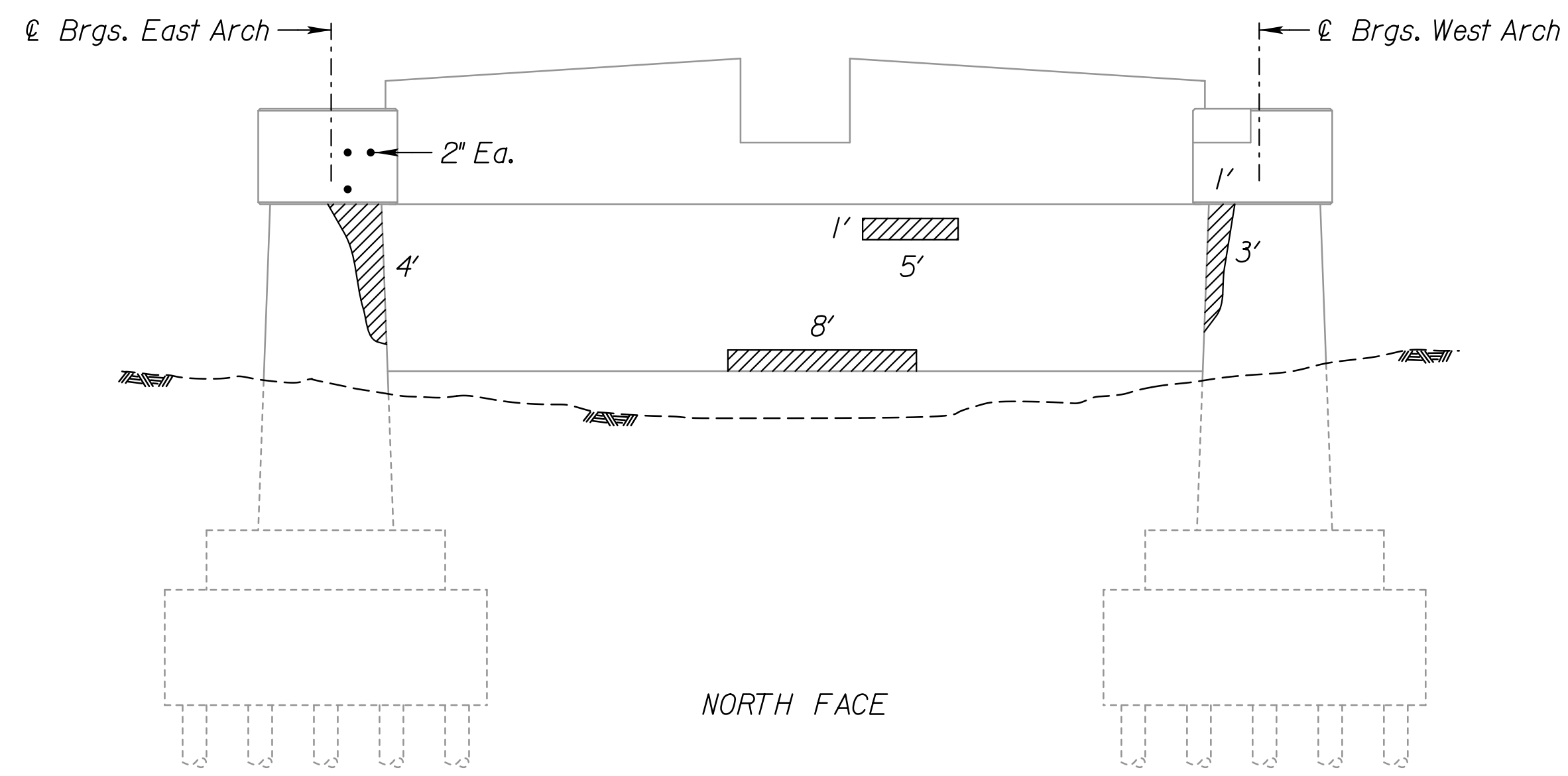
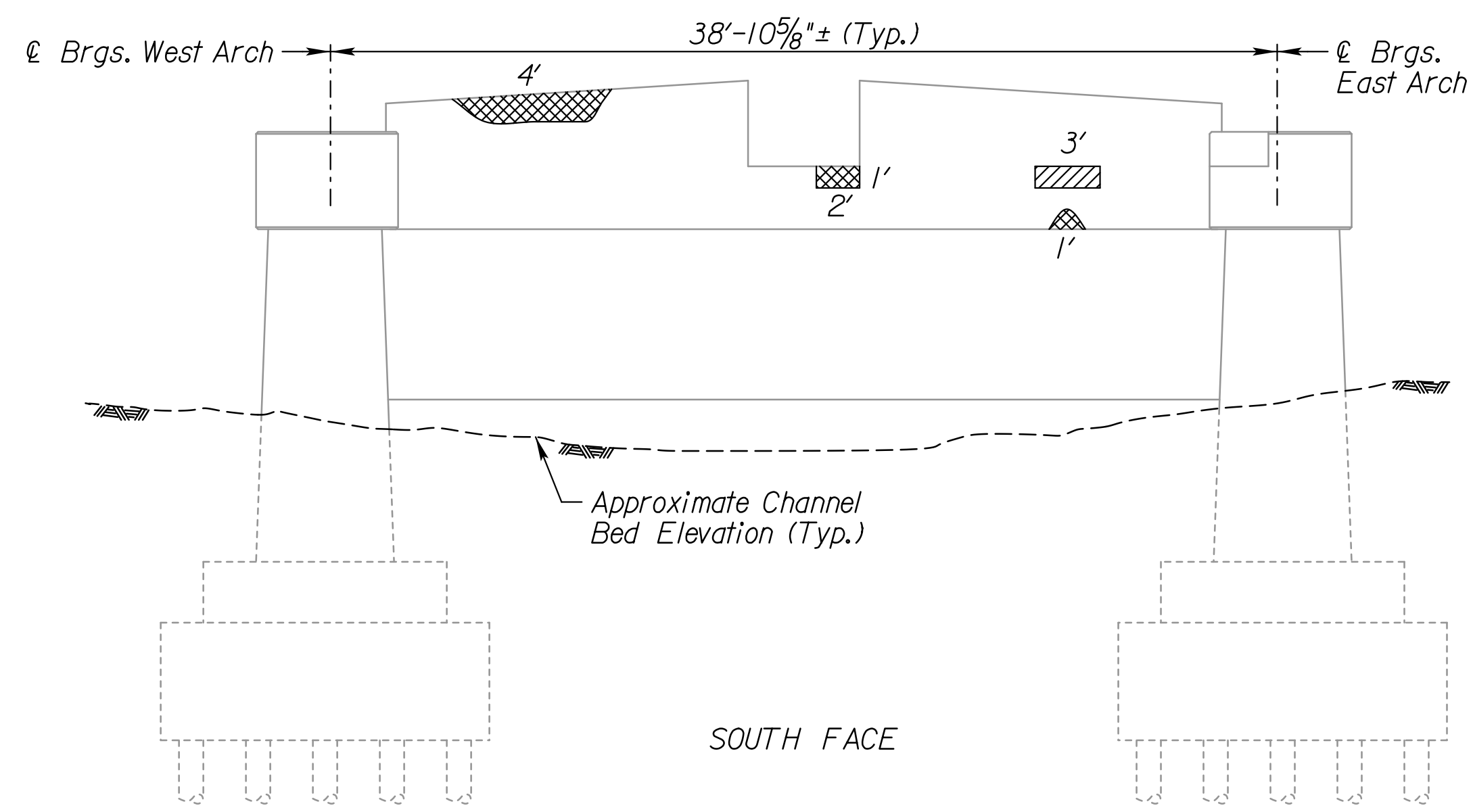
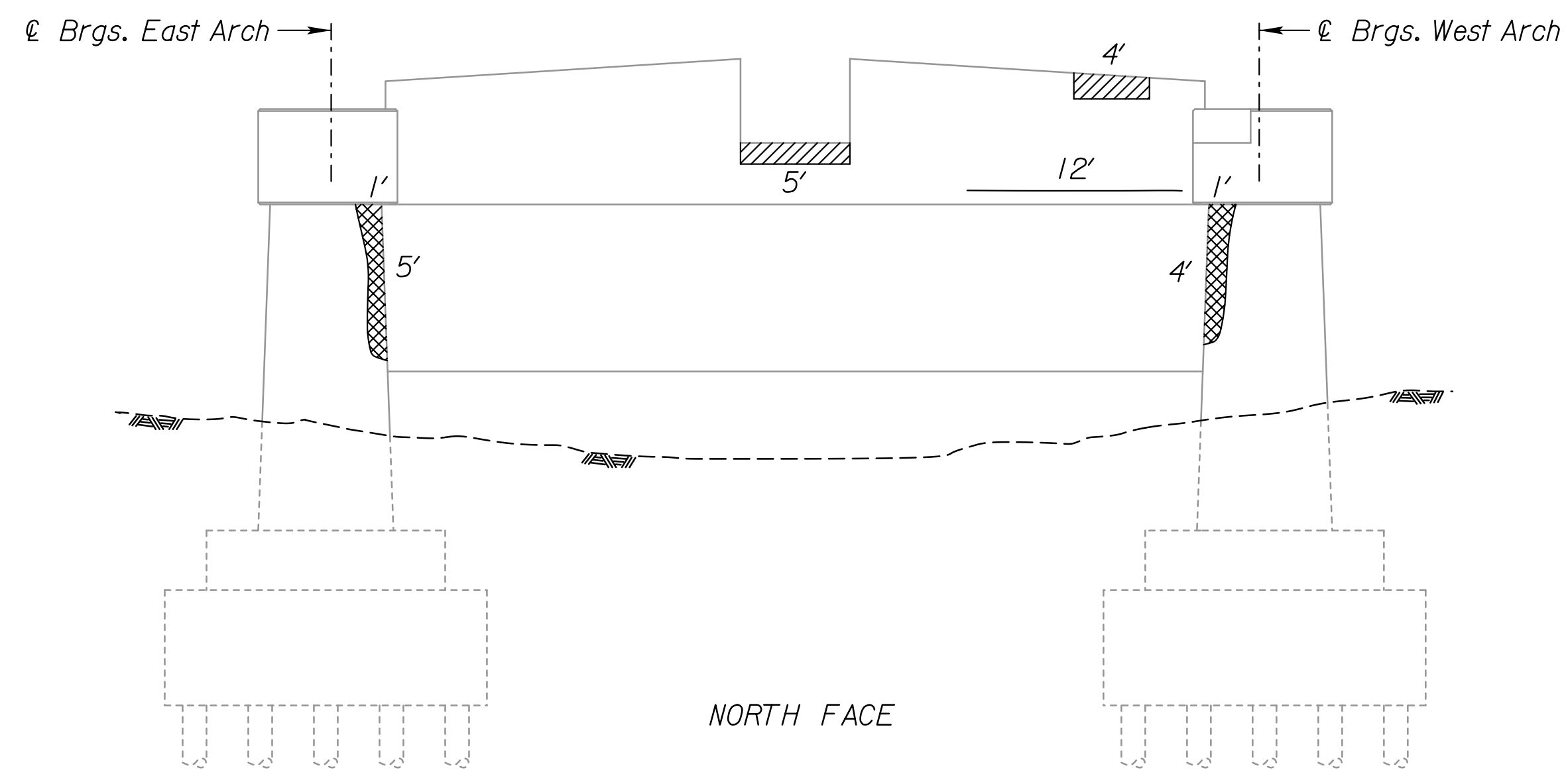
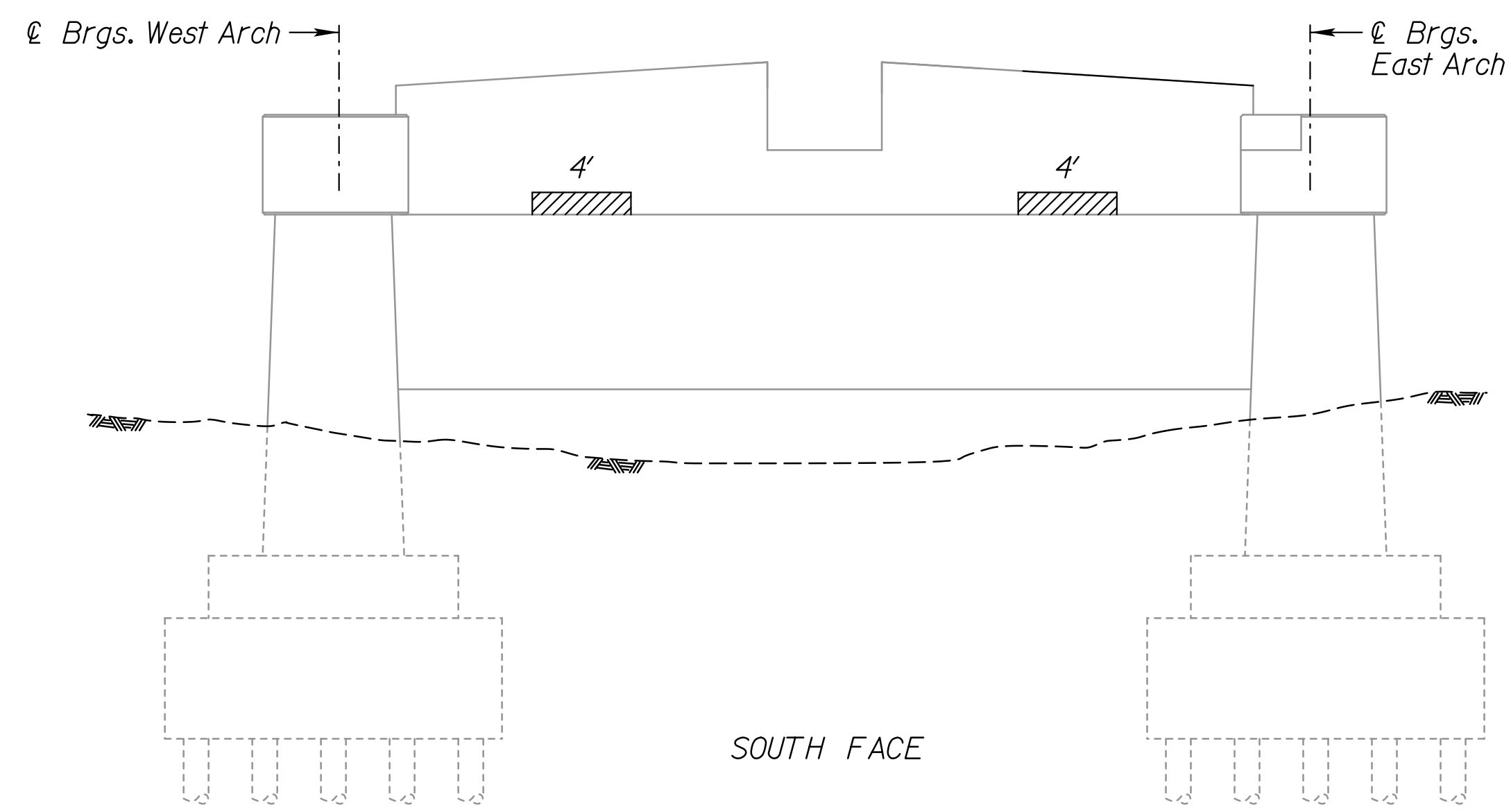


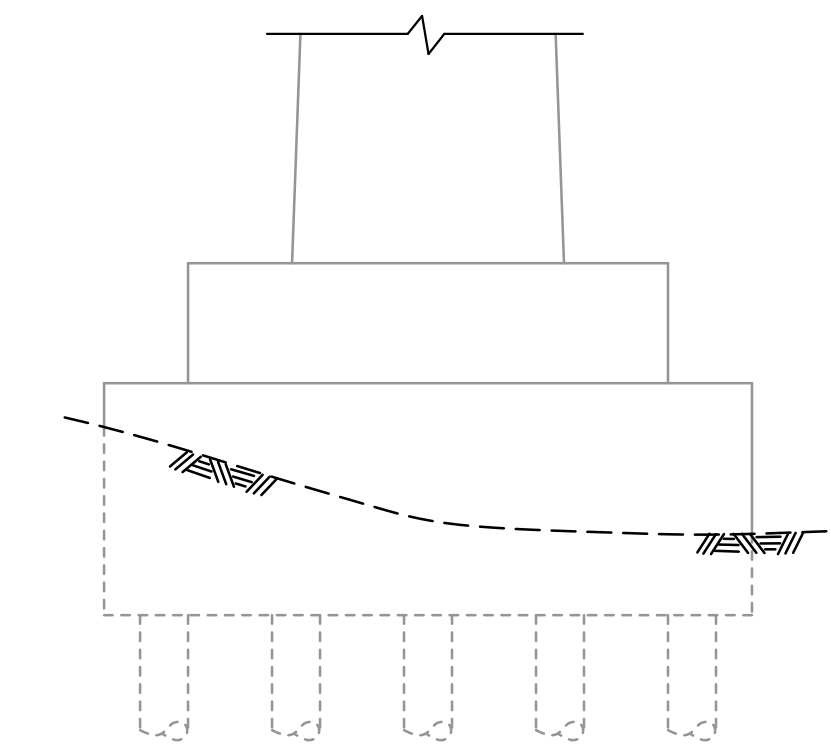
FHWA REGION NO.	STATE	PROJECT NO.	YEAR	SHEET NO.	TOTAL SHEETS
7	KANSAS	472-85210	2015	10	28



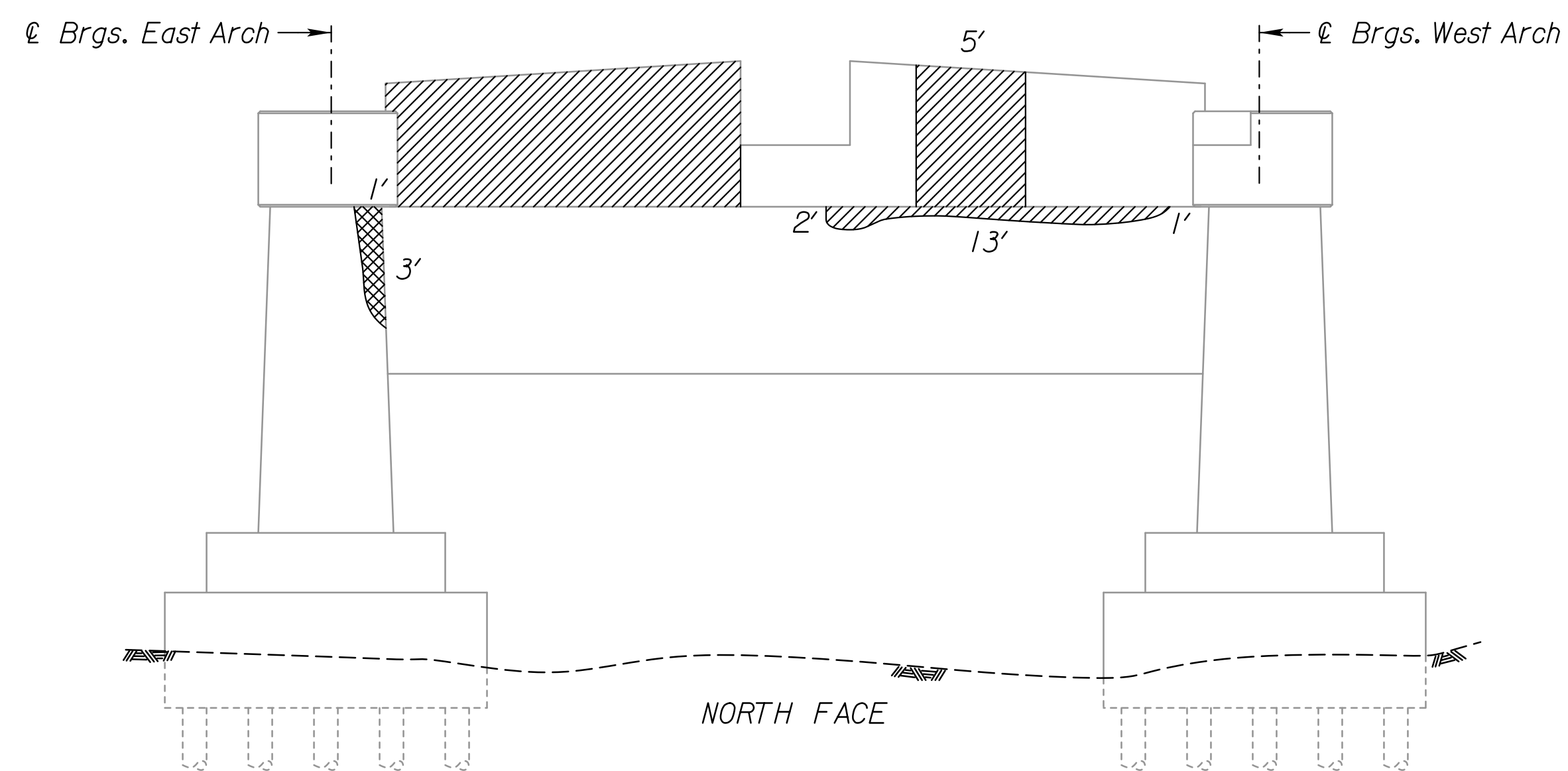
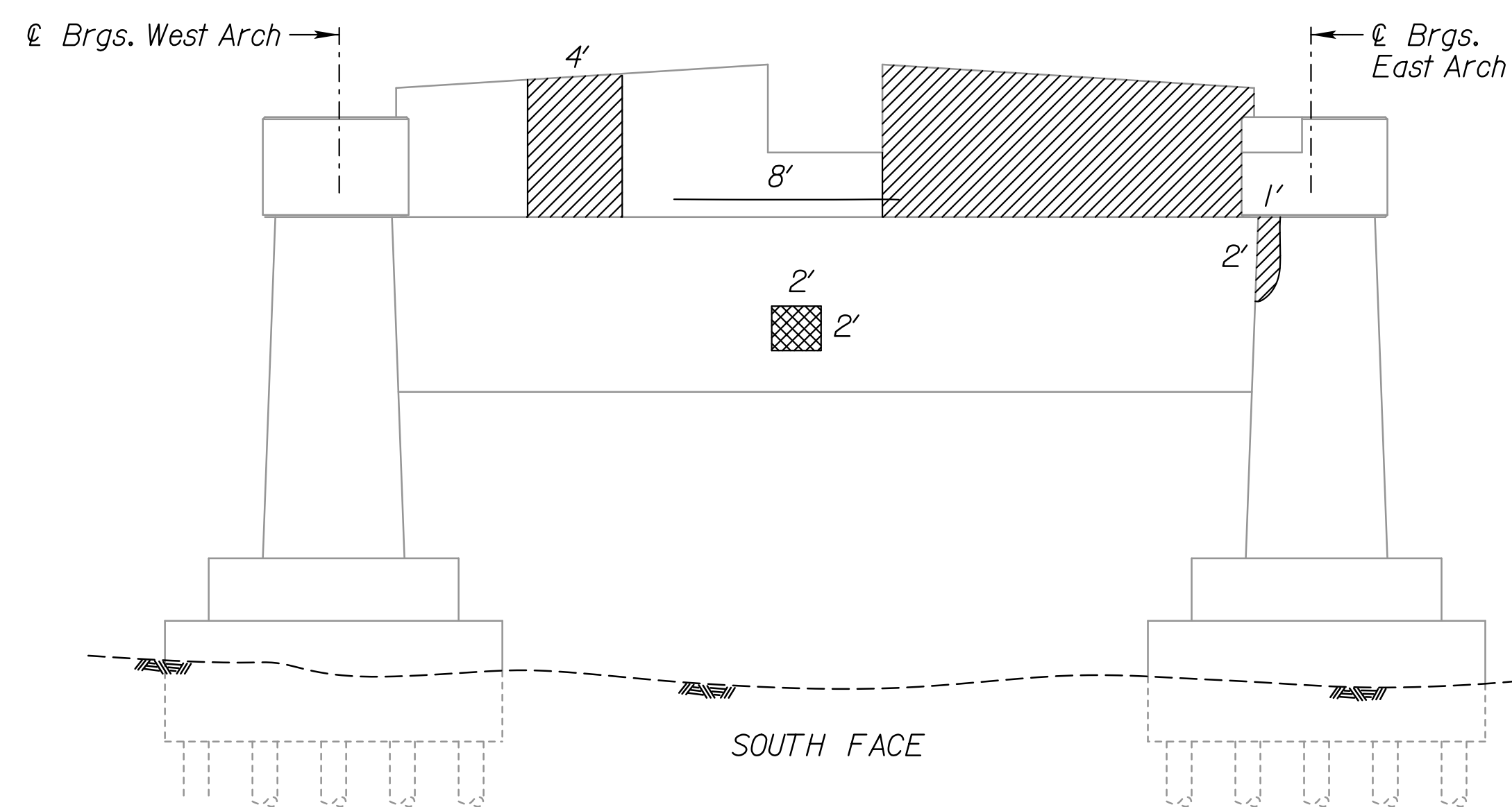
PIER 1



PIER 2



ELEVATION B-B



PIER 3

LEGEND

- Hollow Areas to be Repaired
- Cracks to be Pressure Grouted
- Spall with Exposed Rebar Areas to be Repaired

3					
2					
1					
NO.	DATE	REVISIONS		BY	APP'D
CITY OF WICHITA					
BR. NO. 53040087000AR30			STA. 236+89.80		
SUBSTRUCTURE REPAIR DETAILS					
REHABILITATION OF THE JOHN MACK BRIDGE OVER THE KANSAS RIVER					
SHEET NO.	OF	SCALE	APP'D		
DESIGNED		DETAILED	AJD	QUANTITIES	CADD
DESIGN CK.		DETAIL CK.	MJJ	QUAN. CK.	CADD CK.

Plotted By: AJDINKEL | Plot Location: | File: c:\transystems\pw\local\transyscorp\pw\ajdinkel\020779\Substructure Repair details 02.dgn | Plot Date: 10/5/2015