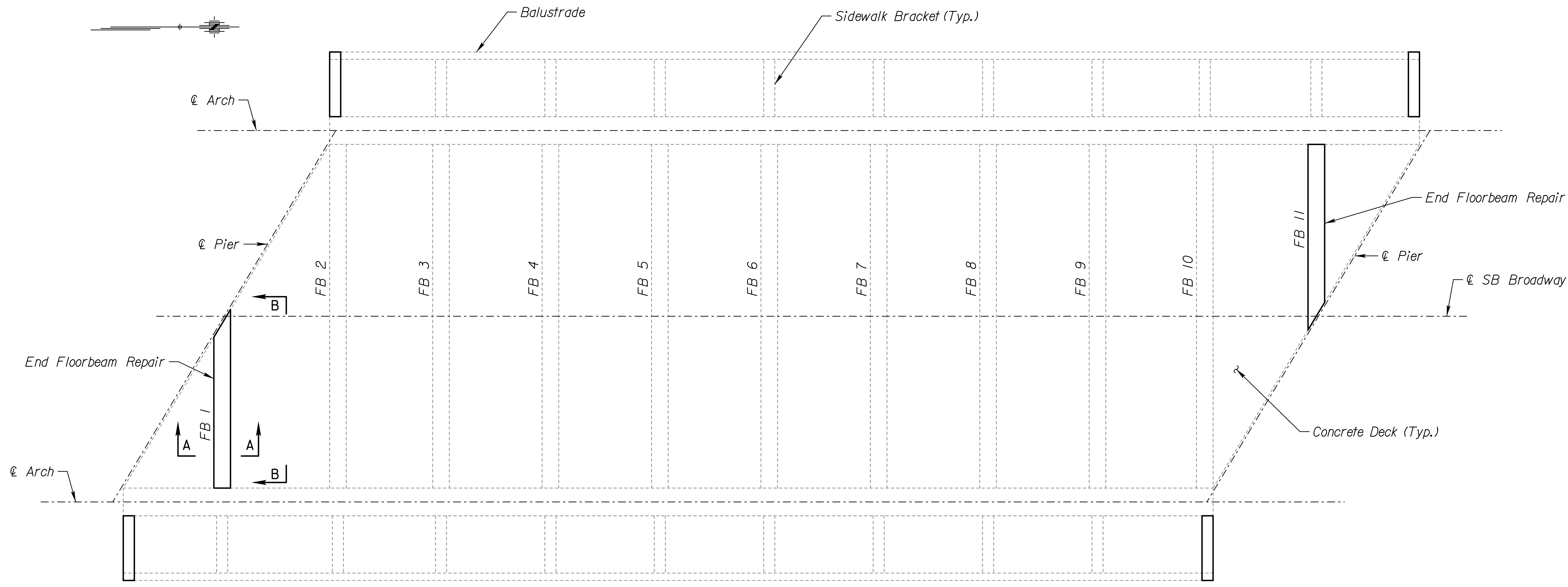
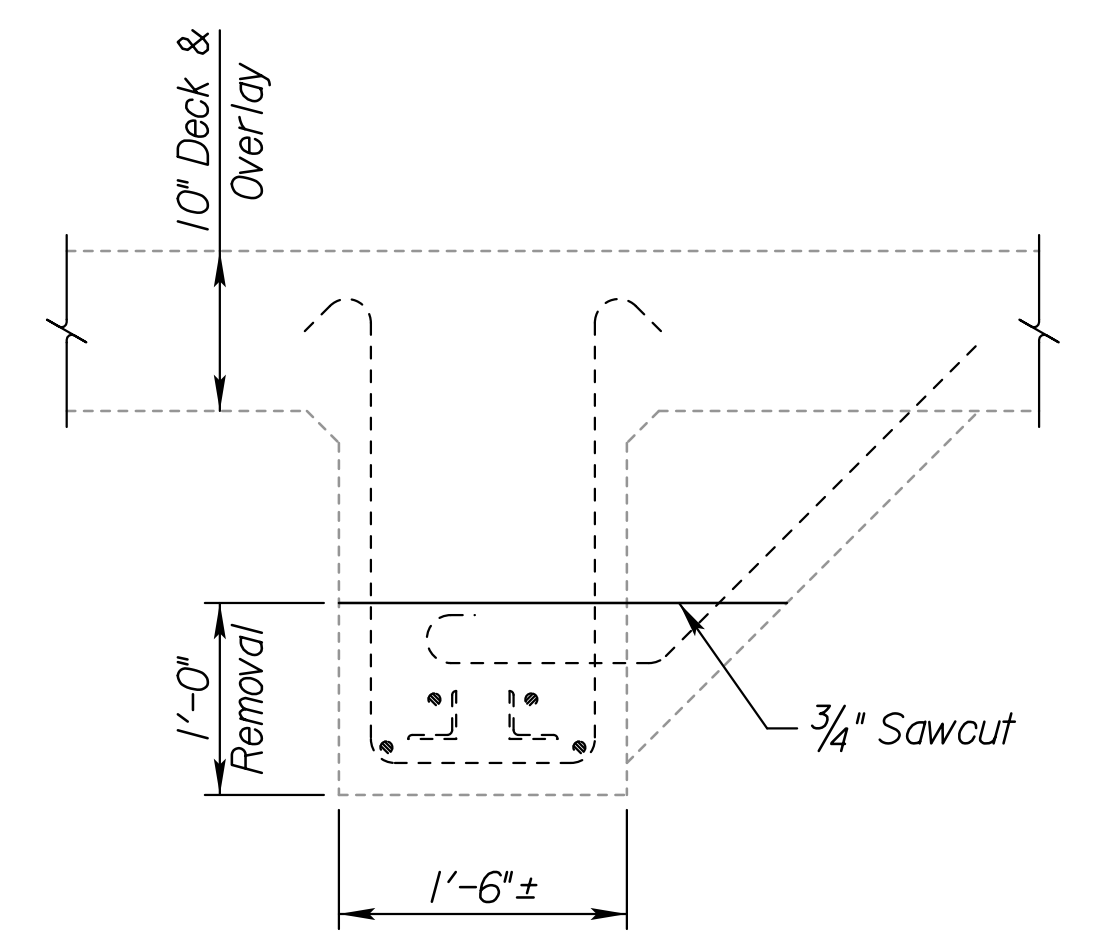


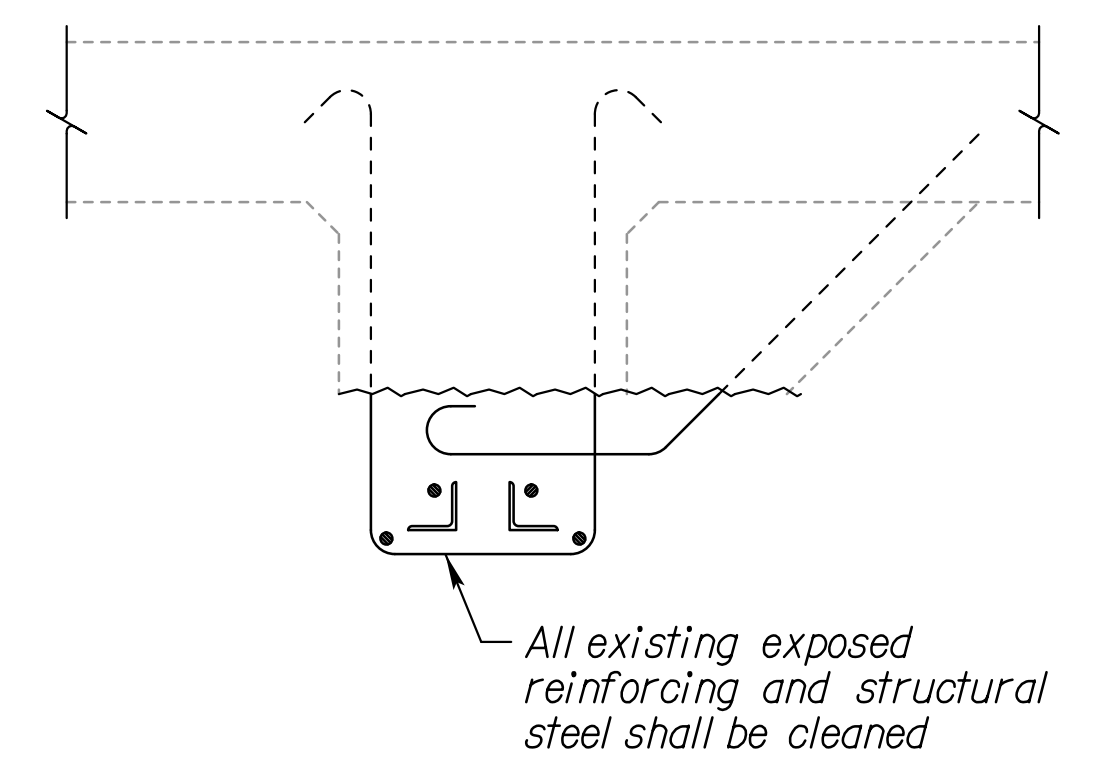
FHWA REGION NO.	STATE	PROJECT NO.	YEAR	SHEET NO.	TOTAL SHEETS
7	KANSAS	472-85210	2015	5	28



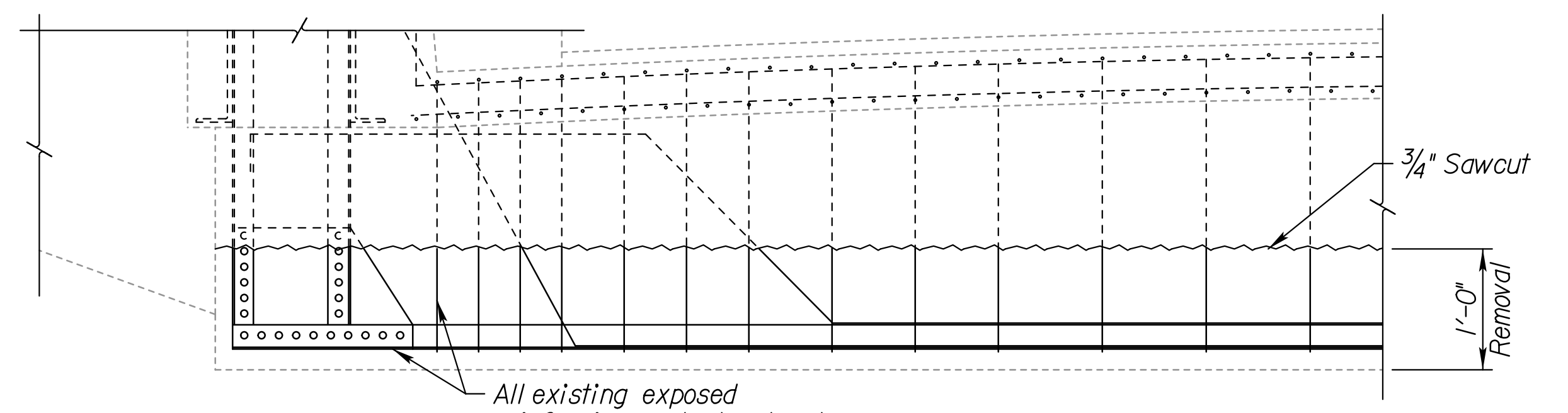
TYPICAL FRAMING PLAN
Scale: 3/16"=1'-0"



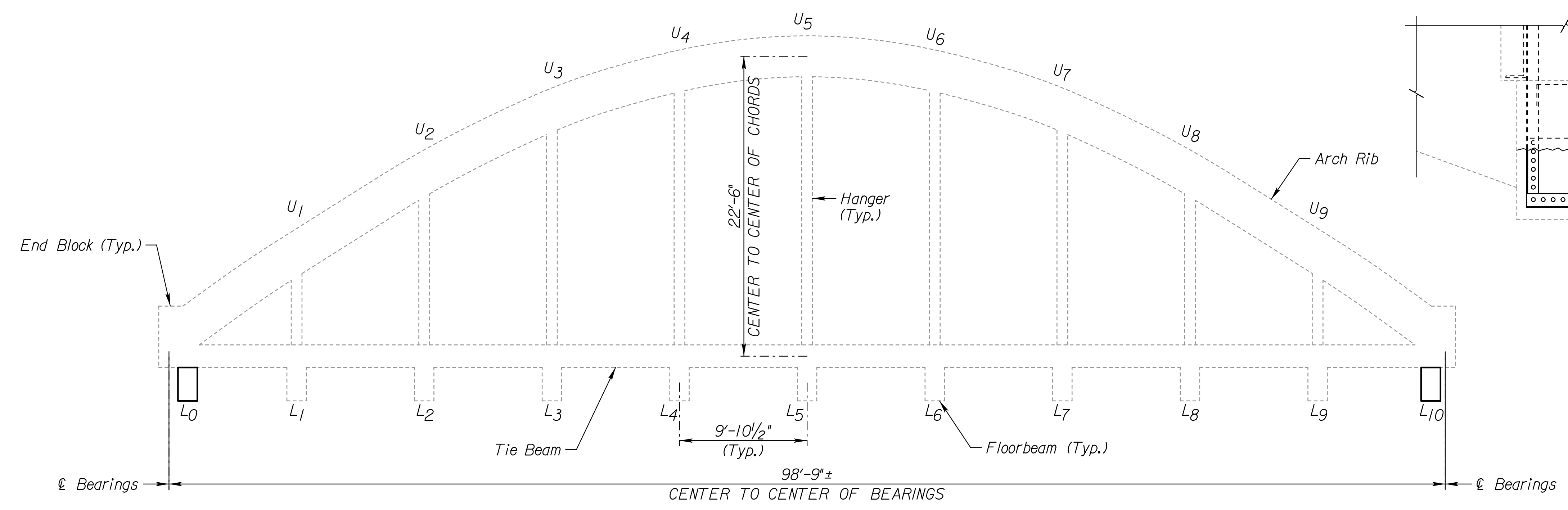
SECTION A-A
Showing Removal



SECTION A-A
Showing Cleaning



SECTION B-B



TYPICAL ARCH ELEVATION
Scale: 3/16"=1'-0"

Note:
End Floorbeam Repair shall be the same at each span. A total of 16 floorbeams shall be repaired.

3					
2					
1					
NO.	DATE	REVISIONS		BY	APP'D
CITY OF WICHITA					
BR. NO. 53040087000AR30			STA. 236+89.80		
END FLOORBEAM REPAIR DETAILS					
REHABILITATION OF THE JOHN MACK BRIDGE OVER THE KANSAS RIVER					
SHEET NO.	OF	SCALE	APP'D		
DESIGNED		DETAILED	AJD	QUANTITIES	CADD
DESIGN CK.		DETAIL CK.	MJJ	QUAN. CK.	CADD CK.

Plotted By: AJDIMKEL | Plot Location:
 File: c:\trnsystems\pw\local\trnsyscorp\pw\aj\dimkel\020779\Floorbeam Repair.dgn
 Plot Date: 10/5/2015