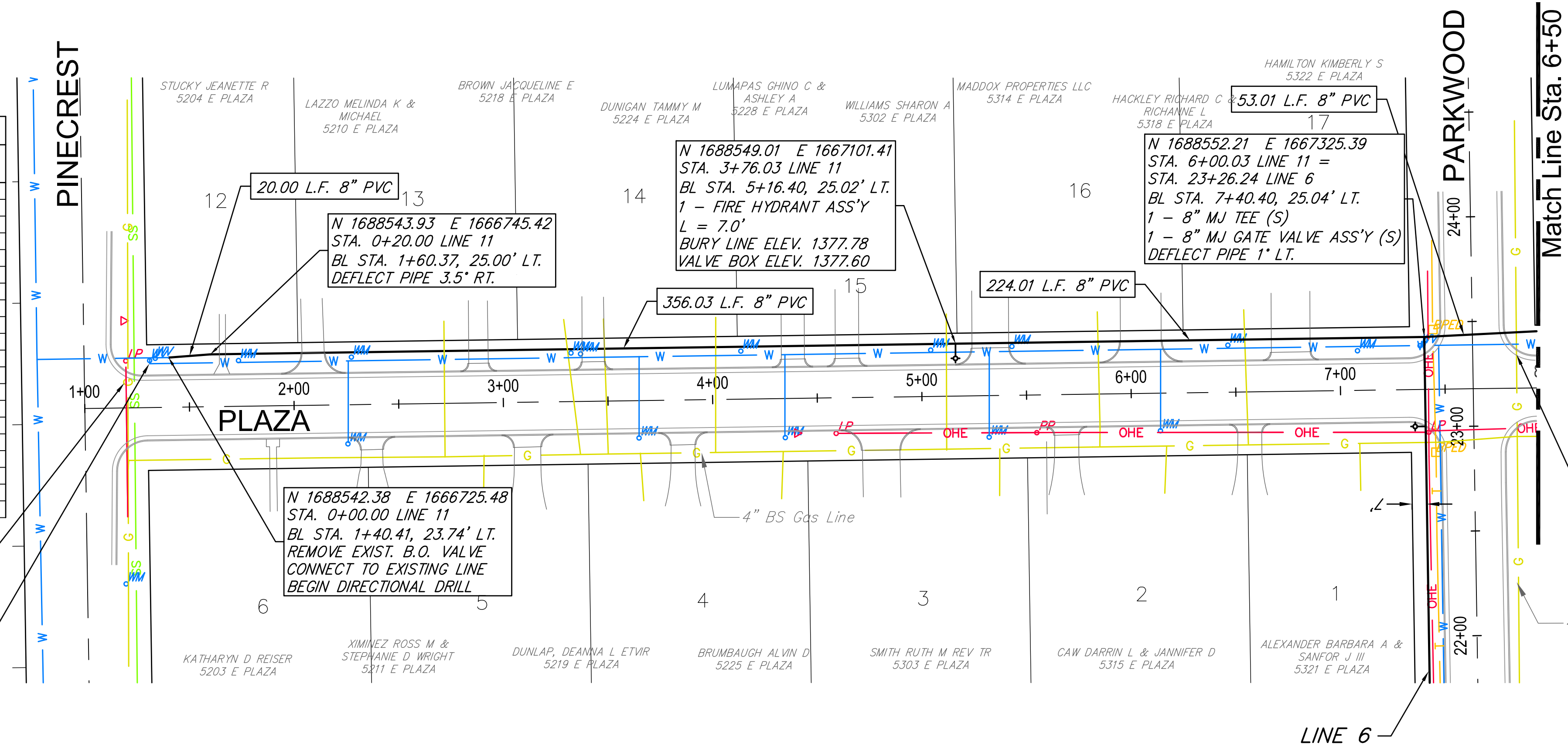


WATER METER SUMMARY				
BL Station	Lt./Rt.	Service (Long or Short)	Address	AS BUILT
1+73	Lt.	Short		
2+25	Rt.	Long		
2+27	Lt.	Short		
3+32	Lt.	Short		
3+37	Lt.	Short		
3+64	Rt.	Long		
4+14	Lt.	Short		
4+33	Rt.	Long		
5+04	Lt.	Short		
5+31	Rt.	Long		
5+43	Lt.	Short		
6+13	Rt.	Long		
6+46	Lt.	Short		
7+08	Lt.	Short		
8+27	Lt.	Short		
8+28	Rt.	Long		
8+29	Rt.	Long		
8+94	Rt.	Long		
8+97	Rt.	Long		

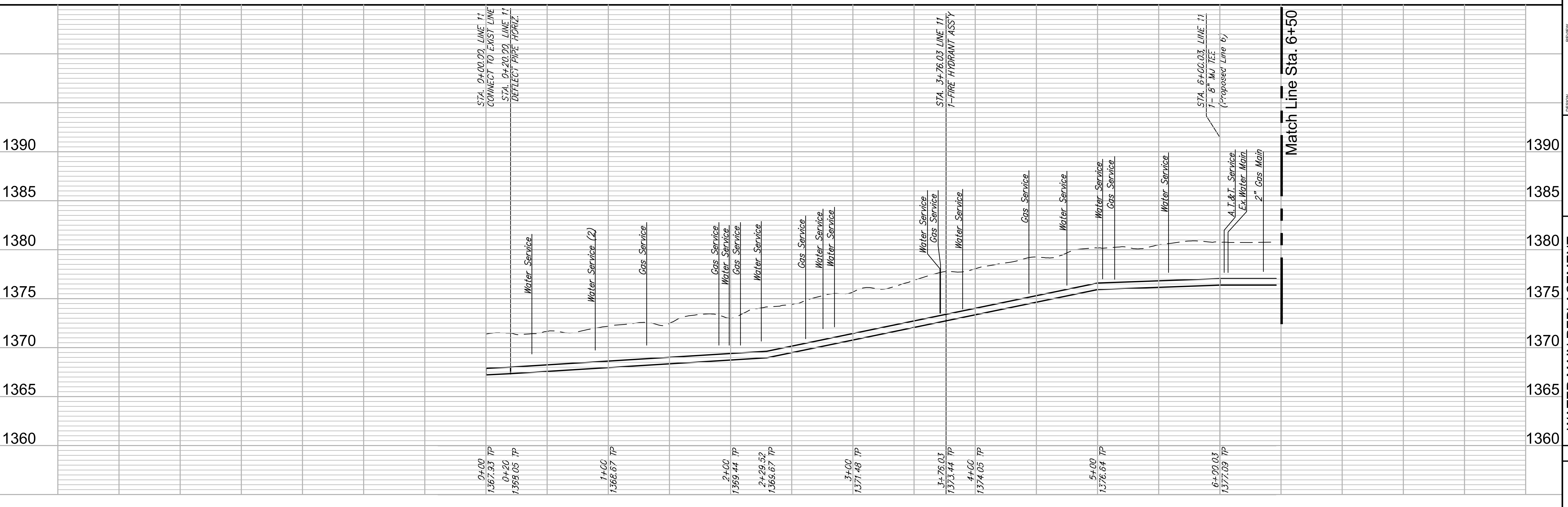
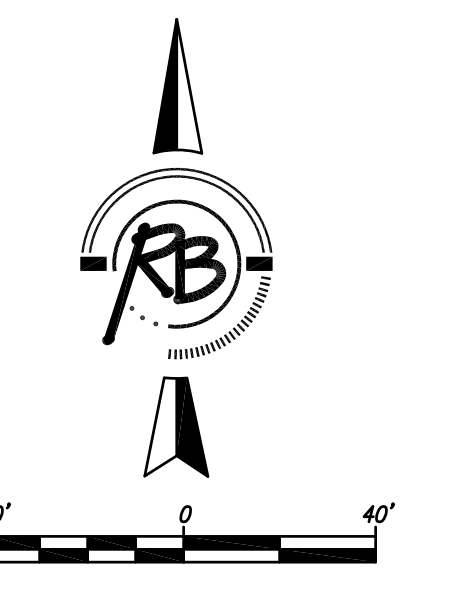
4" Gas to be replaced with 2" PL Gas

Cut & Cap Existing line at valve #02612.



4" Gas to be replaced with 2" PL Gas

Existing Pavement, Curb and Gutter to be Removed and Replaced as necessary for construction. No additional pay shall be made for this work, Subsidiary to other pay items.



RUGGLES & BOHM
ENGINEERS ARCHITECTS

PROJECT NUMBER: 448-90611
DRAWING FILE: Plaza Engineering Base

REVISION: 01/07/2015
DATE: 09/29/2015

DESIGNER: RA/EJG
DRAWN: RA/DRS

WATER MAIN REPLACEMENT
PLAZA - LINE 11
Wichita, Kansas

RB JOB: 422TVV
SHEET: 30 OF 40