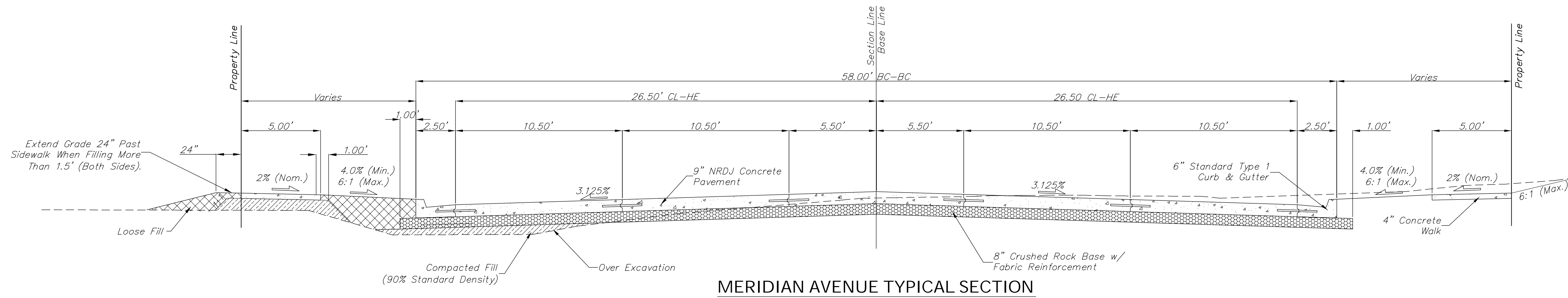
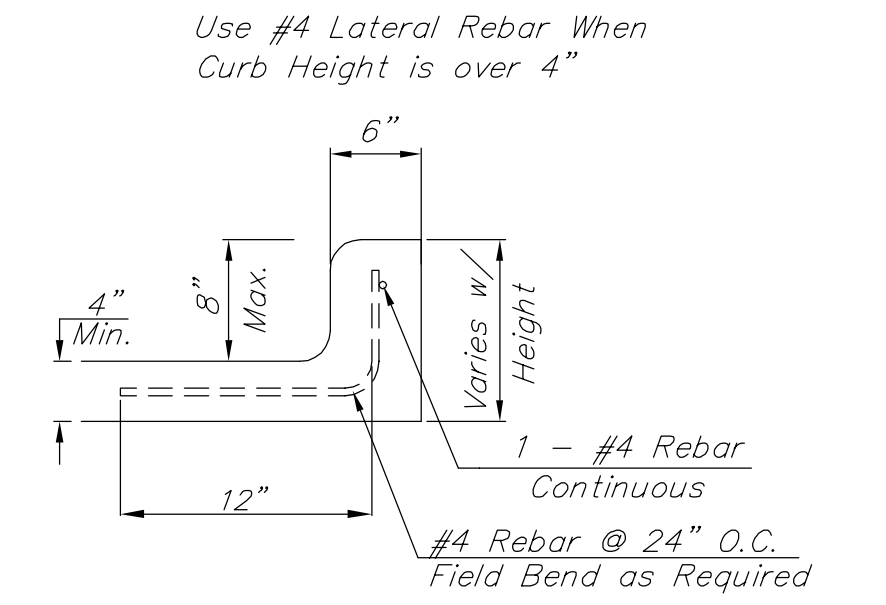


REGION NO.	STATE	PROJECT NO.	FISCAL YEAR	SHEET NO.	TOTAL SHEETS
7	KANSAS	087 N-0593-01	2015	6	153

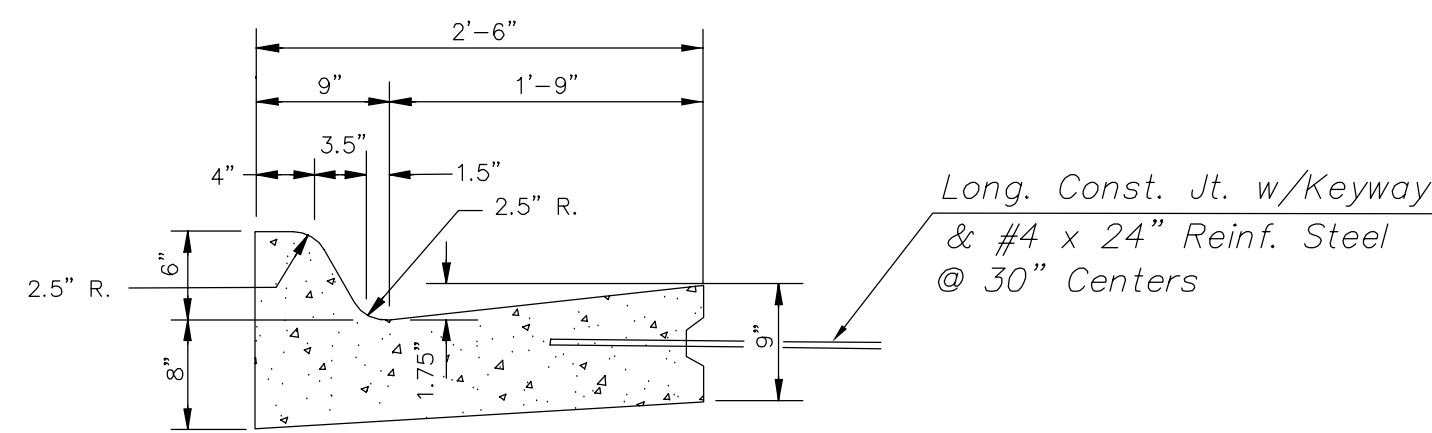


MERIDIAN AVENUE TYPICAL SECTION

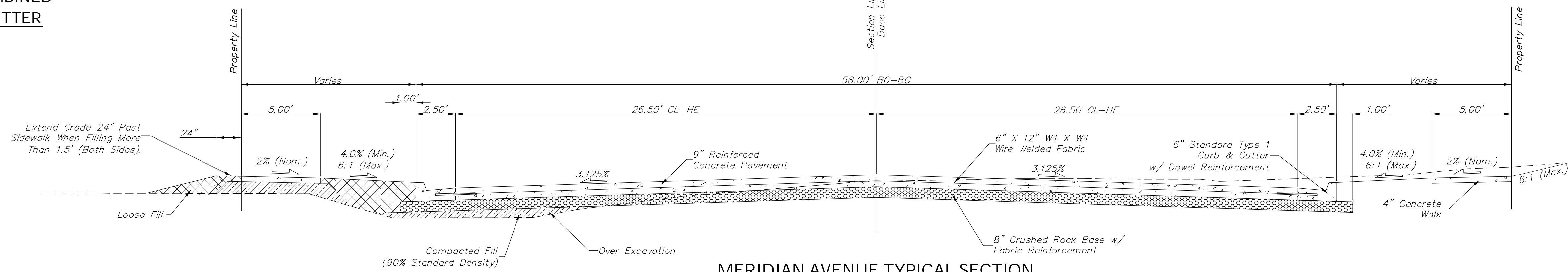
Sta. 46+48.03 to Sta. 49+20.32
 Sta. 50+25.07 to Sta. 55+89.95
 Sta. 56+80.49 to Sta. 62+16.50
 Sta. 63+74.78 to Sta. 66+58.77
 Sta. 67+48.98 to Sta. 68+83.08
 Sta. 67+48.98 to Sta. 68+83.08
 Sta. 69+73.04 to Sta. 71+16.93
 Sta. 72+07.05 to Sta. 75+42.36
 Sta. 76+62.95 to Sta. 82+14.01
 Sta. 83+22.67 to Sta. 88+07.10



PROTECTION CURB DETAIL (6"-8")

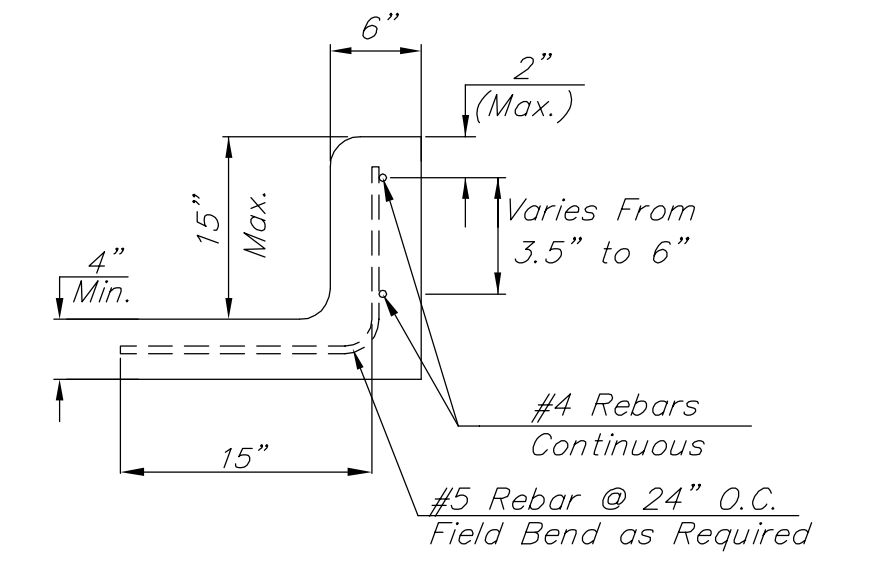


TYPE 1 COMBINED CURB & GUTTER (6")

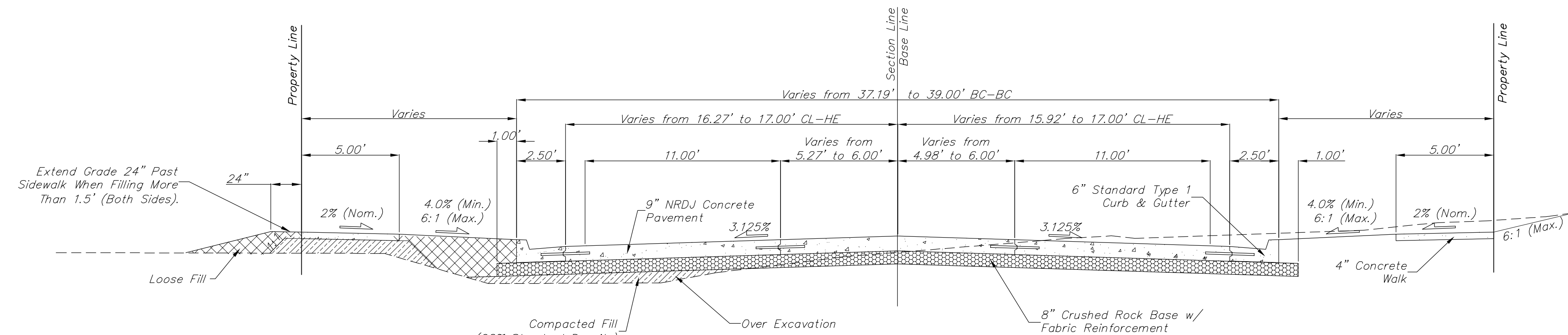


MERIDIAN AVENUE TYPICAL SECTION

Sta. 62+16.50 to Sta. 62+36.50
 Sta. 63+54.78 to Sta. 63+74.78



PROTECTION CURB DETAIL (9"-15")



HARRY STREET TYPICAL SECTION

Sta. 98+55.35 to Sta. 99+10.10
 Sta. 100+90.34 to Sta. 101+50.00

Drawing File: E:\Proj\Combined Meridian\Drawings to McCormick\Details\TypSec.dwg [TypSec.02]

Design: KEK/TPV
 Drawn: TPV
 Approved: TPV
 Scale: NONE

Project No. 1004E493 CAPITAL IMPROVEMENT PROJECT

PAVING TYPICAL SECTIONS

MERIDIAN AVENUE - PAWNEE AVENUE TO MCCORMICK AVENUE

Baughman Company, P.A.
 315 Ellis St., Wichita, KS 67211 P 316.262.7271 F 316.262.0149
 ENGINEERING | SURVEYING | PLANNING | LANDSCAPE ARCHITECTURE

May 2015

SHEET 6 OF 153