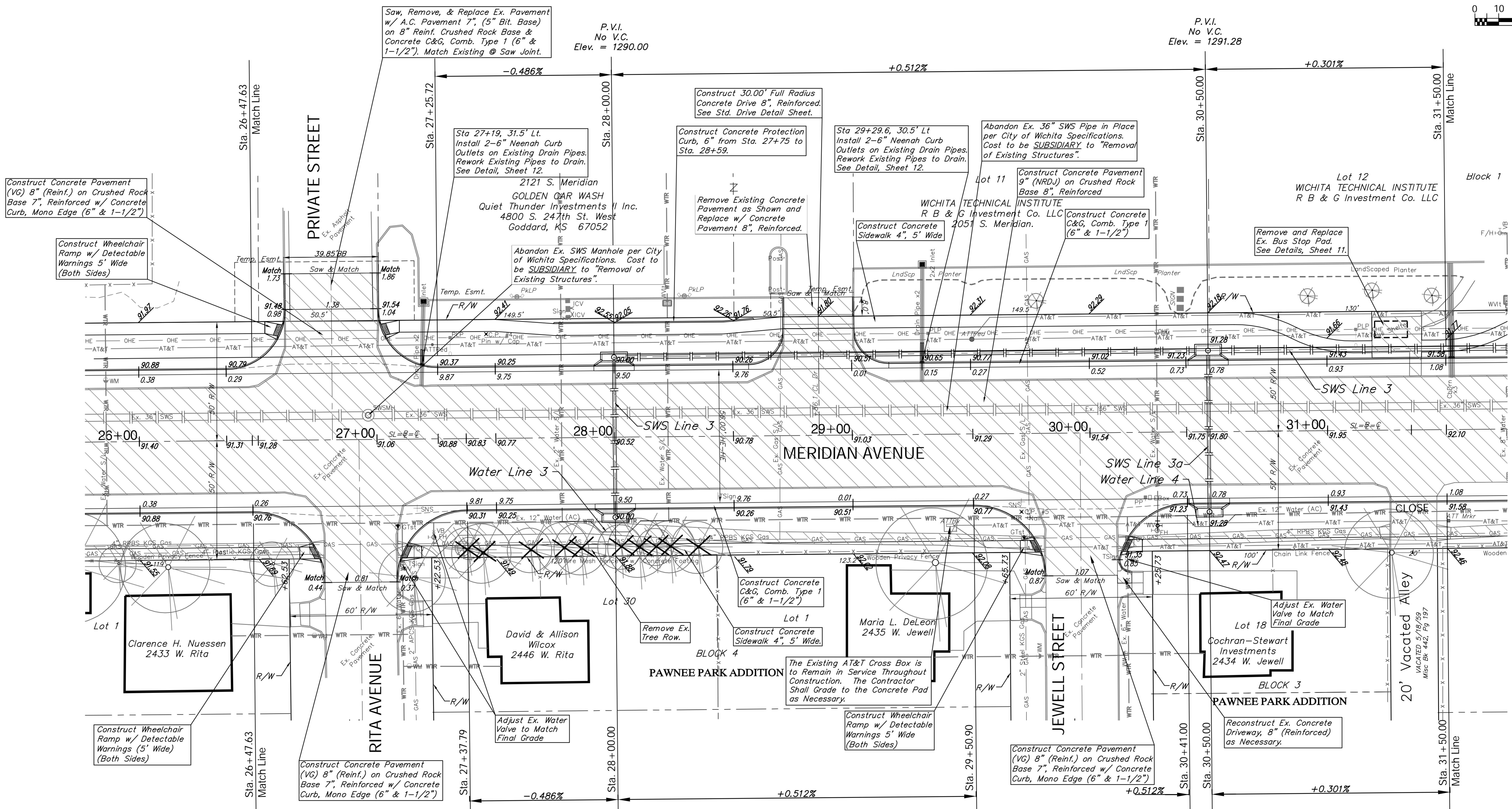
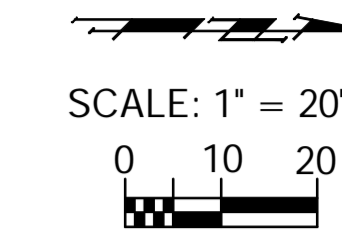


BENCHMARK:
 BM #4 - Chiseled "a" on the Top of Curb on the North Side of Jewell Street adjacent to Light Pole, 350'± East of Centerline of Meridian.
 Elev. = 1291.16 (NAVD 88)

REGION NO.	STATE	PROJECT NO.	FISCAL YEAR	SHEET NO.	TOTAL SHEETS
7	KANSAS	087 N-0593-01	2015	17	153



PROTECTION CURB					
STA. TO STA. (BASELINE)	ROADWAY	SIDE	HEIGHT	LENGTH (ft.)	
27+74.5	28+59.1	Meridian	Lt.	6"	84.6

P.V.I.
 No V.C.
 Elev. = 1290.00

P.V.I.
 No V.C.
 Elev. = 1291.28

Note:
 Trees/Shrubs to be removed are marked thus:

Areas of Full Pavement Removal & Replacement are Indicated By:

Drawing File: E:\Proj\Meridian-Pawnee to Orient\Civil 3D\Meridian Base.dwg (Pav 04)
 Design: TPV
 Drawn: Sonny
 Approved: JFB
 Scale: 1:20
MERIDIAN AVENUE PAVING
 Sta. 26 + 47.63 to Sta. 31 + 50.00
 MERIDIAN AVENUE - PAWNEE AVENUE to MCCORMICK AVENUE

Baughman Company, P.A.
 315 Ellis St., Wichita, KS 67211 P 316.262.7271 F 316.262.0149
 ENGINEERING | SURVEYING | PLANNING | LANDSCAPE ARCHITECTURE