

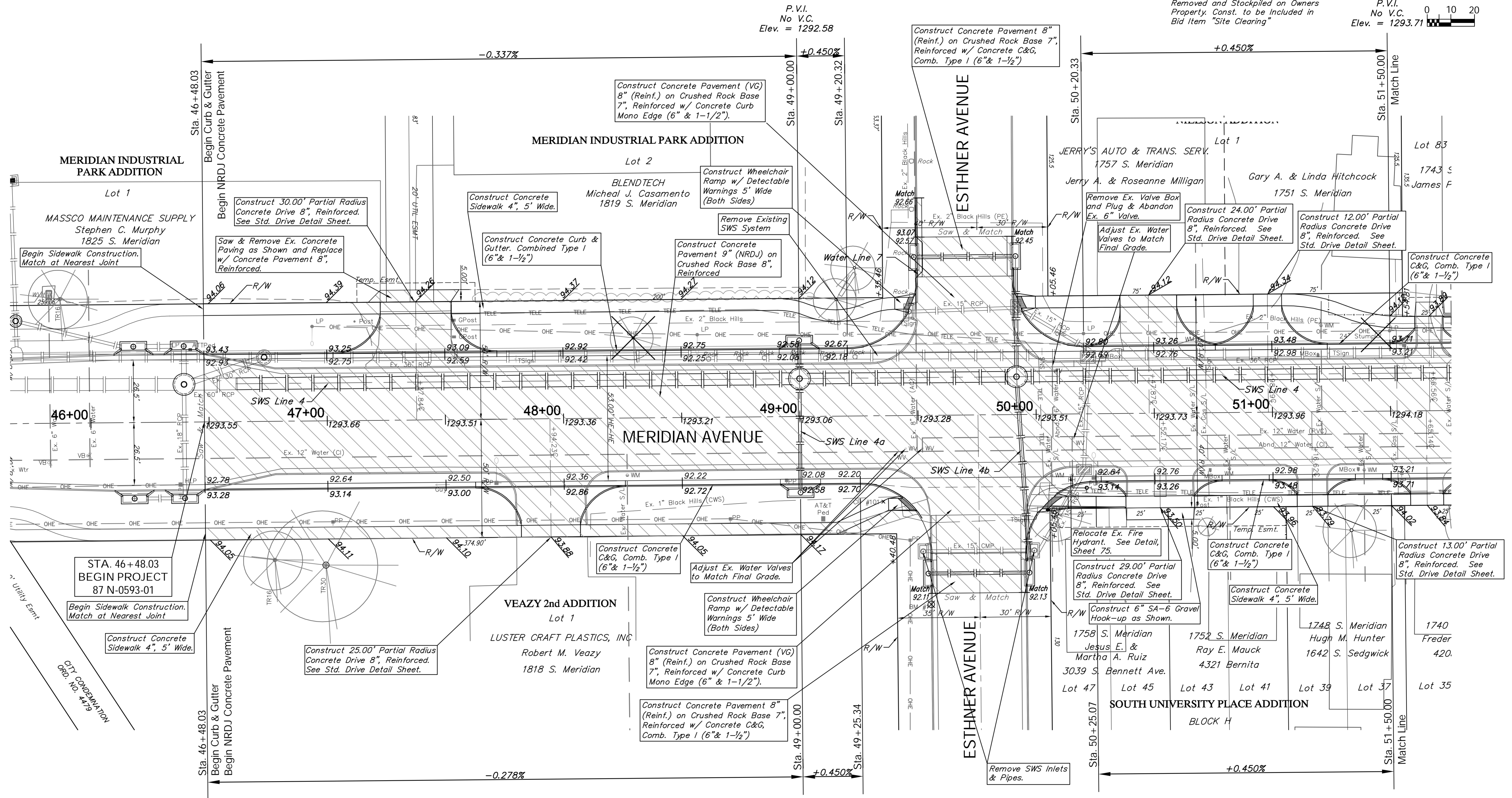
BENCHMARK:
 BM #1 - Chiseled "b" on the Top of Curb on the South Side of
 Esthner Avenue, 80± East of Centerline of Meridian.
 Elev. = 1292.64 (NAVD 88)

The Contractor Shall Remove the Landscaping
 Boulders at 1819 S. Meridian and Stockpile on
 Private Property. Cost for this work shall be
 SUBSIDIARY to the Lump Sum Bid Item "Site
 Clearing".

| | | | | | |
|------------|--------|---------------|-------------|-----------|--------------|
| REGION NO. | STATE | PROJECT NO. | FISCAL YEAR | SHEET NO. | TOTAL SHEETS |
| 7 | KANSAS | 087 N-0593-01 | 2015 | 20 | 153 |

NOTE:
 Fence in Right-of-Way to be
 Removed and Stockpiled on Owners
 Property. Const. to be Included in
 Bid Item "Site Clearing"

SCALE: 1" = 20'
 P.V.I.
 No V.C.
 Elev. = 1293.71



STA. 46+48.03
 BEGIN PROJECT
 87 N-0593-01
 Begin Sidewalk Construction.
 Match at Nearest Joint

| PROTECTION CURB | | | | | |
|----------------------------|---------|----------|--------|-----------------|------|
| STA. TO STA. (BASELINE) | ROADWAY | SIDE | HEIGHT | LENGTH (ft.) | |
| 50+13.2 | 50+37.7 | Meridian | Rt. | 6" | 24.4 |

Note:
 Areas of Full Pavement
 Removal & Replacement
 are Indicated By:

Trees/Shrubs to be
 removed are marked thus:

Drawing File: E:\Projects\Meridian - Orient to McCormick\Civil 3d\Meridian Base.dwg (Pav 07)
 Project No. 1004 E493 CAPITAL IMPROVEMENT PROJECT
 Design: TPV
 Drawn: STAFF
 Approved: TPV
 Scale: NOTED

MERIDIAN AVENUE PAVING
 Sta. 46+48.03 to Sta. 51+50.00
 MERIDIAN AVENUE - PAVINEE AVENUE to MCCORMICK AVENUE